



PHRF Southern California Championship
Presented by Ullman Sails
August 1-2, 2015

SAILING INSTURCTIONS

The organizing Authority for PHRF Southern California Championships will be the
Cabrillo Beach Yacht Club (CBYC),
211 West 22nd St, San Pedro CA 90731
310-519-1694 www.cbyc.org

1 Rules

- 1.1 The Regatta will be governed by the rules as defined in current edition of *The Racing Rules of Sailing*. US Sailing Prescription Rule 82 shall not apply to this event and competitors are directed to review the Assumption of Risk provisions of the Notice to Race.
- 1.2 PHRF classes must carry the safety equipment required by U.S. Safety Requirements for U.S. Near-Shore Races (definition 1.0.3)
<http://www.ussailing.org/safety/equipment-and-requirements/>
- 1.3 The Marine Industry Racer (MIR) rule of PHRF of Southern California will NOT apply to this regatta.
- 1.4 Double headsails shall be allowed on non-spinnaker class yachts.

2 ELIGIBILITY

- 2.1 This regatta is open to any boat that has a valid 2015 PHRF Southern California rating (including Multihulls 23' and over).

3 NOTICE TO COMPETITORS

- 3.1 Notices to Competitors will be posted on the official regatta notice board located in the CBYC patio area outside the front door of the club building.

4 CHANGES TO SAILING INSTRUCTIONS

- 4.1 Any change to the sailing instruction will be posted before 1000 on the day it will take effect, except that any change to the schedule of races will be posted by 2000 on the day before it will take effect.

5 SIGNAL MADE ASHORE

- 5.1 Signals made ashore will be displayed on the CBYC flagpole. When a signal is displayed over the appropriate Racing Area letter flag it applies to that Racing Area only.
- 5.2 When flag AP is displayed ashore, "1 minute" is replaced with "not less than sixty (60) minutes" in race signal "AP".

6 SCHEDULE

- 6.1 The Race Committee (RC) will attempt to conduct 3 races on Saturday and 2 races on Sunday for the Buoy Classes and one race per day for the Random leg class

- 6.2 Friday July 31st, 1100 hrs – Race Packets available at CBYC
1800 hrs – Class breaks posted

Saturday August 1st, **0900 hrs – Competitors Briefing at CBYC**
1225 hrs – First warning for Buoy Classes
1225 hrs – First warning for RLC class
1800 hrs – After race party / no host Dinner

Sunday August 2nd,

1225 hrs – First warning for Buoy Classes

1225 hrs – First warning for RLC Class

1700 hrs – After Race Party

1800 hrs – Trophy Presentation

7 CLASS FLAGS

7.1 Class breaks and class flag descriptions (numeral pendants) will be posted on the official notice board by 0900 on the day they will take effect.

7.2 Yachts shall fly their assigned class flag off the backstay (or as close as possible on yachts without permanent backstays).

8 RACING AREAS

8.1 There will be two racing areas:

- The Buoy Classes shall be sailing outside, with the start/finish approximately ½ mile off the upper Los Angeles Harbor breakwater.
- The Random Leg classes shall be sailing inside and outside the breakwater with the start finish line located inside the breakwater approximately 1/3 mile east of Pier 400.

9 THE COURSES

9.1 For Buoy Classes the diagrams in “Attachment A”, show the courses, including the course signals, the order in which marks are to be passed, and the side on which each mark s to be left. Mark “1” will be approx. 1.3 nm to weather of the start and “2 “will be approx. 0.75nm to weather of the start. The course lengths will be adjusted to provide the appropriate amount of racing. Approximate Compass direction and distance to weather marks 1 and 2 will be posted on a white board displayed on the committee boat

- 9.2 For the Random Leg Classes the courses are listed in “Attachment B”. Also listed are the mark descriptions, the Lat/Lon’s are approximate locations for reference only.
- 9.3 The course to be sailed will be designated by code flags displayed by the Race Committee.
- 9.4 No Later than the warning signal, the Race Committee Signal Boat will display the approximate compass bearing and distance to the first mark. This applies to the Buoy Classes only.
- 9.5 When there is a gate, boats shall sail between the gate marks from the direction of the previous mark and round either gate mark.

10 MARKS

- 10.1 Mark 1, 2, 3S and 3P will be either Orange or Yellow inflatable shapes.
- 10.2 New marks as provided in instruction 13, will be the alternate color (orange or yellow)
- 10.3 The starting and finishing marks will be staffs displaying orange flags mounted on inflatable marks or on the race committee boat(s).
- 10.4 For the Random Leg Class if a mark is missing and the Race Committee is unable to replace the mark in accordance with rule 34, boats shall round the location of the mark as published in Attachment B of these sailing instructions. This modifies rule 34.

11 THE START

- 11.1 Check-In: Prior to the warning Signal for the first race of each day, each boat shall sail by the stern of the RC boat on starboard tack and be recognized by the RC. The penalty for failure to check-in will be a twenty percent (20%) scoring penalty for the first race of the day.

11.2 Races will be started using RRS 26.

11.3 The start shall be between a buoy on the PORT side of the committee boat and a orange flag displayed on the committee boat

11.4 Boats whose warning signal has not been made shall keep clear of the starting area.

11.5 The order of starts will be determined by the race committee on the water and may not necessarily be the same as the prior race.

11.6 Boats starting more than ten (10) minutes after their starting signal will be scored DNS. This changes rule A4.1

12 RECALLS

12.1 It is the intent of the Race Committee to hail, as a courtesy, (via VHF, see section 20) the sail numbers of OCS boats after the starting signal. The failure of any boat to hear the hail, an untimely hail or failure to hail, and the order of the boats hailed shall not be relieve a yacht of her obligation to start correctly nor be grounds for redress. This changes rule 62.1(a).

13 CHANGE OF THE NEXT LEG OF THE COURSE

13.1 To change the next leg of the course, the race committee will lay a new mark (of alternate color) and remove the original mark as soon as practicable. When in a subsequent change, a new mark is replaced it will be replaced by the original color.

14 FINISH

- 14.1** The Finish Line for the Buoy Classes will be on the STARBOARD side of the Committee boat and will be between a buoy and an orange flag on the race committee boat.
- 14.2** The Finish line for the Random Leg Classes will be between a buoy and an orange flag on the committee boat.
- 14.3** The Finish line area is to be kept clear. Any yacht not racing that interferes with a yacht finishing is subject to protest.

15 TIME LIMIT

- 15.1** The time limit for each race will be thirty (30) minutes for the first boat to reach the first mark and one hundred and twenty (120) minutes for the first boat to finish. Boats failing to finish within 30 minutes after the first boat in their class completes the course shall be scored DNF. This does not apply to the Random Leg Class

16 PENALTY SYSTEM

- 16.1** Appendix T, Section A, Penalties While Racing, rule T1 will apply.

T1 PENALTIES AT THE TIME OF THE INCIDENT: The first two sentences of rule 44.1 are changed to: "A boat may take a One-Turn Penalty when she may have broken a rule of Part 2 or 31 while racing. However, when she may have broken a rule of Part 2 while in the zone around a mark other than a starting mark, her penalty shall be a Two-Turns Penalty".

- 16.2** Appendix T, Section B, Post-Race Penalties, rule T2 will apply.

- 16.3** A boat that takes a Post-Race Penalty shall complete and file with the Jury a penalty Declaration Form prior to the beginning of a hearing involving the incident.

17 PROTESTS, REQUEST FOR REDRESS, AND ARBITRATION

- 17.1** A boat intending to protest an incident that occurs in the racing area shall notify the boats involved and the finish line committee boat of her intention to file a protest. This shall include the sail number of the boat(s) being protested.
- 17.2** Protests shall be filed on forms available at the CBYC clubhouse. Written protests shall be filed with the Protest Chair within 60 minutes of the Race Committee Boat (for the course area sailed) docking at CBYC. The protest time limit and a list of protests will be posted on the official notice board. This posting constitutes the notification required in RRS 61.1(b) and 63.2
- 17.3** The helmsman shall represent the boat. This changes RRS 63.3
- 17.4** ARBITRATION – US Sailing Prescription Appendix T Section D Arbitration will apply with the following changes: The preamble is deleted and t5.3 is changed to read “ A boat that may have broken a rule may take a Post-Race Penalty of 30 percent calculated as stated in rule 44.3(c) by acknowledging her acceptance in writing during the meeting”.
- 17.5** Arbitration for protests on Saturday shall be held as soon as practical on Saturday afternoon. Any unresolved protests shall go to the Jury before racing commences Sunday morning, the time will be posted on the official notice board at the conclusion of arbitration.
- 17.6** Breaches of instructions 11.4 and/or 14.3 will not be grounds for a protest by a boat. This changes rule 60.1(a). The penalty for breaking these instructions, or for a breach of rule 55, may be less than disqualification if the Protest Committee so decides.

18 SCORING

- 18.1** PHRF SoCal Area C buoy ratings will be used for buoy classes and PHRF SoCal Area C Random Leg (RLC) ratings will be used for the Random Leg Class.
- 18.2** This regatta will be scored as provided in the RRS except that ALL a boats races scores will counted (i.e. no throw-outs).

19 SAFETY REGULATIONS

19.1 Retiring vessels, or vessels that do not intend to start a scheduled race shall promptly notify the Race Committee on station via hailing or on the designated VHF channel and receive acknowledgement. If this is not possible she shall promptly report her actions to Race Management ashore at CBYC.

20 COMMUNICATIONS

20.1 The Race Committee for the Buoy Course will communicate on channel 72 and the Race Committee for the Random Leg Courses will communicate on channel 69.

20.2 A boat shall make neither radio nor mobile phone transmissions while racing nor receive communications not available to all boats.



2015 PHRF SO-CAL CHAMPIONSHIPS

APPENDIX B

RANDOM LEG COURSES

MARK DESCRIPTIONS

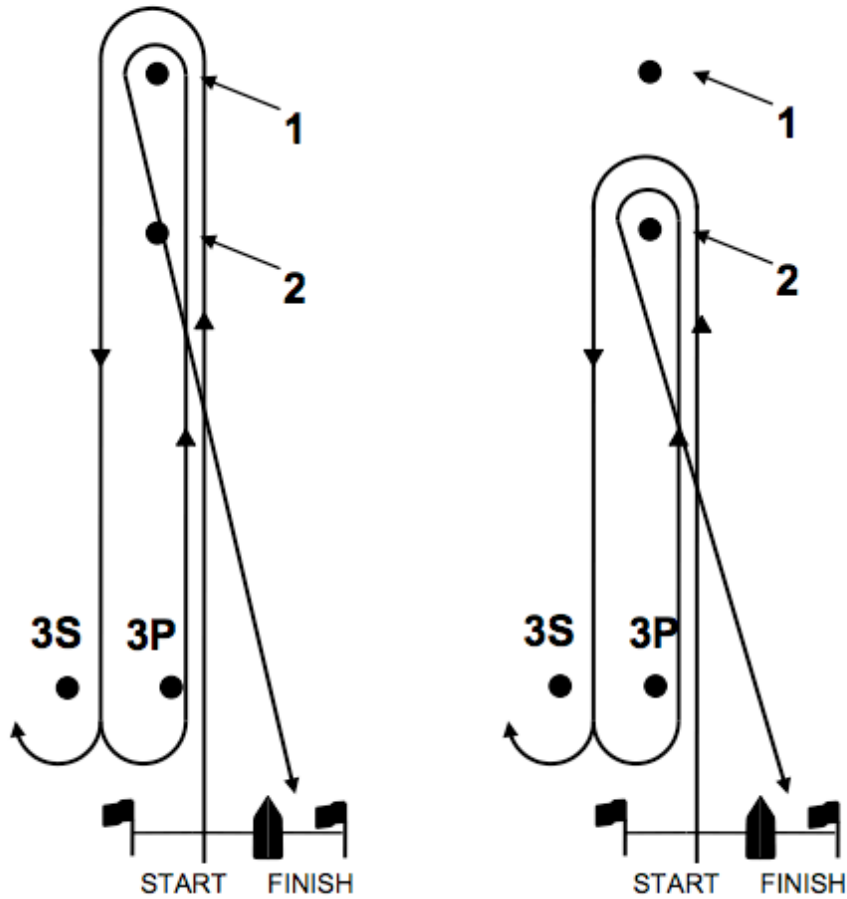
1. POINT FERMIN BUOY:	33-41'55.70"N	118-17'30.00"W
2. W. END OF MID BREAKWATER	33-43'38.34"N	118- 14'42.39"W
3. E. END OF MID BREAKWATER	33-43'22.90"N	118-11'08.90"W
4. W. END OF LONG BEACH BW	33-43'22.90"N	118-11'08.90"W
5. E. END OF LONG BEACH BW	33-43'22.56"N	118-08'08.56"W
6. PLATFORM EDTH	33-35'45.00"N	118-08'27.00"W
7. PLATFORM EVA	33-39'42.25"N	118-03'43.37"W
8. ISLAND WHITE	33-45'09.38"N	118-09'35.77"W
9. ISLAND FREEMAN	33-44'28.40"N	118-09'44.60"W
10. G "3" 0.4 mile NW of east end of Middle Breakwater	33-43.603"N	118-11.547"W
32. SPAR BOUY ½ mile NW of west end of Alamitos Jetty	33-44.340"N	118-07.450"W
82. SPAR BOUY 1 mile NE of west end of Middle Breakwater	33-43.060"N	118-13.561"W

COURSES

A	START – 1p – 5p -32p – 4s – 2s – FINISH	20.05nm
B	START – 1p – 6p – 9p – FINISH	26.55nm
C	START – 2p – 5p – 32p-4s-2s-FINIISH	15.75nm
D	START – 1p – 9p – 8p – 4s – 2 s- FINISH	18.3nm
E	START – 2p – 6p – 32p – FINISH	24.9nm
F	START – 1P – 5P – 32P – 8P – 4S – 2S – FINISH	21.45nm

APPENDIX A

Windward-Leeward Course (Short and Long leg course examples)



COURSE

MARK ORDER

- | | |
|---|----------------------|
| A | START – 1- FINISH |
| B | START - 2- FINISH |
| C | START - 1-3-1-FINISH |
| D | START – 2-3-2-FINISH |
| E | START – 1-3-2-FINISH |
| F | START - 2-3-1-FINISH |

Marks 1 & 2 to be rounded to port, Mark 3 is a gate.