

HOOD RIVER YACHT CLUB

WEDNESDAY NIGHT SPRING SERIES 2015 (4/29, 5/6, 13, 20, 27, 6/3)

SAILING INSTRUCTIONS

1. RULES

- 1.1 This regatta will be governed by the rules as defined in the Racing Rules of Sailing (RRS).
- 1.2 US Sailing prescriptions to the following rules apply: RRS 40, 60, 61.4, 63.2, 63.4, 64.3(b), 67, 70.5(a), 76.1, 82, 88.2, Appendix G and R. Inclusion of additional US Sailing prescriptions may be noted elsewhere in the Sailing Instructions. US Sailing prescriptions are available at www.ussailing.org.
- 1.3 Changes to the rules may be noted elsewhere in the Notice of Race or Sailing Instructions. If the Notice of Race and Sailing Instructions are in conflict, the Sailing Instructions have precedence.

2. NOTICES TO COMPETITORS

- 2.1 Notices to competitors will be posted on the official notice board at the gate to the Hood River Marina and optionally on the event website
- 2.2 The race organizer and the Signal Boat will communicate on VHF channel 72.
- 2.3 Courses will be announced via text messages to numbers submitted at registration or to tyler@bechmarine.com.

3. CHANGES TO SAILING INSTRUCTIONS

- 3.1 Changes to the Sailing Instructions posted on the official notice board will be posted by 1700 the day it takes effect.

4. SCHEDULE

- 4.1 Race dates : APRIL 29; MAY 6, 13, 20, 27; JUNE 3
Warning Time: 6:25

5. CLASSES

- 5.1 PHRF, Moore 24, Express 27, and other classes as assigned.

6. SIGNALS MADE ASHORE

- 6.1 Signals made ashore will be made from the entrance gate to the Hood River Marina.

6.2 When flag AP is displayed ashore, the warning signal will be made not less than 30 minutes after the removal of AP unless at that time the race is postponed again or abandoned. This changes RRS Race Signals AP.

7 RACING AREA AND RACE COMMITTEE SIGNAL BOAT

7.1 The racing area is the Columbia River in the vicinity of the Hood River Marina.

7.2 The SIGNAL BOAT for each race will be a boat announced on the notice board with the course. The signal boat may be one of the competing yachts. The signal boat will display an ORANGE FLAG from the backstay.

8 COURSES

8.1 The course for each race will be posted on the notice board at the gate to the Hood River Marina.

8.2 The Race Committee will announce the race course no later than 5:15 via text message.

8.3 Marks and starting lines, and their corresponding symbols and locations are described on Attachment A: Course Descriptions.

8.4 The course description is a series of letters indicating the marks and their required sequence. The first letter displayed is the designated starting line, the last letter is the finishing line, and the letters between are rounding marks.

8.5 Starting and Finishing Lines, and Marks are specified in Attachment A: Mark Descriptions.

8.6 All rounding marks must be left to port unless designated with a (S) following the mark in the course description.

8.7 When passing underneath the Hood River Bridge all boats are required to pass through the center channel bridge span.

8.8 Yachts may not pass to the north of the barge anchored near the Bingen lumber harbor.

8.9 After the start, Event Site Red Buoy "E" marks the continuing obstruction of the Hood River sandbar and must be passed to the north, unless being used as a rounding mark. The buoy shall be treated as part of the continuing obstruction.

8.10 White Salmon River Green Buoy "33" marks the continuing obstruction of the White Salmon River sandbar, and must be passed to the south at all times. The buoy shall be treated as part of the continuing obstruction.

9 THE START

9.1 The starting line and format will be announced with the course description.

9.2 When the EVENT SITE starting line is used, the line shall be between Marks E and F.

9.3 When using the EVENT SITE starting line, and a COUNTDOWN starting sequence, the following signals shall be made by the SIGNAL BOAT (this changes RRS 26.):

Signal boat will countdown 10 seconds over VHF prior to sound signals. All times will be synchronized with GPS time.

MINUTES BEFORE STARTING SIGNAL (GPS TIME)	VISUAL SIGNAL	SOUND SIGNAL	MEANS
ATTENTION SIGNAL (6:24:45)	NONE	5 SHORT BLASTS	ATTENTION
5 (6:25:00 PM)	NONE	ONE	WARNING
4 (6:26:00 PM)	P FLAG (BLUE)	ONE	PREPARATORY SIGNAL
1 (6:29:00 PM)	PREP FLAG REMOVED	NONE	ONE MINUTE
0 (6:30:00 PM)	NONE	NONE	NONE

9.4 In the event that commercial traffic or a false start to the COUNTDOWN starting sequence, at the discretion of the signal boat, the WARNING signal may be delayed to 6:30, or any other time announced by the signal boat via VHF.

9.5 When using the HARBOR start line, and a PURSUIT starting sequence, competitors shall be assigned a time of day that they may cross the starting line based on their PHRF time correction for the course. The first starter will be at the scheduled warning time.

11 SHORTENING COURSE

11.1 The designated start boat may shorten the course by sounding 2 blasts followed by a broadcast on VHF channel 72. This changes RRS 32.1.

12 TIME LIMIT

12.1 The time limit for the first boat to finish each race in the series is 2045. Boats finishing more than 45 minutes after the first boat that completes the course within the time limit will be scored TLE. This changes RRS 35 and A4.

13 FINISHING

13.1 The finish line will be announced with the course description.

13.2 If the race course includes the EVENT SITE starting line, the first boat to cross the finish line shall record its own time and the finish times of all subsequent boats to cross the line within the

time limit. Please record either the time of day, or the elapsed time after the first boat to finish, and email to tyler@bechmarine.com.

13.3 If the race course includes a PURSUIT START, the first boat to cross the finish line shall record the finishing order of the subsequent finishers.

14 PROTESTS AND PENALTIES

14.1 Written protests and requests for redress must be delivered within the protest time limit to a representative of the protest committee near the official notice board.

14.2 The protest time limit will be posted on the official notice board and will be 45 minutes after the end of the last race for the class each day or 10 minutes after the posting of the time limit, whichever is later.

14.3 The first two sentences of Racing Rule 44.1 are changed as follows: "A boat may take a One-Turn Penalty when she may have broken a rule of Part 2 or rule 31 when *racing*. However, when she may have broken a rule of Part 2 while in the *zone* around a *mark* other than a starting *mark*, her penalty shall be a Two-Turns Penalty."

15 SCORING

15.1 The Low Point Scoring System (RRS Appendix A) shall be used.

15.2 Corrected PHRF handicapped times will be calculated on a time on distance basis.

15.3 For the Spring series, a yacht's 4 best scores will be counted. A DSQ score may not be thrown out.

15.4 The final race of the series will be scored as 2 X the yacht's finishing position.

15.5 For the purposes of calculating throwouts, the final race will count as 2 scores.

15.6 Competitors will be scored both overall and in divisions. Divisions will include Open PHRF, and any group of one design boats with at least three entries. The Race Organizers may also create divisions of similarly rated boats.

16 EQUIPMENT AND OPERATING REQUIREMENTS

16.1 Sailing is an activity that has an inherent risk of damage and injury. Competitors in this event are participating entirely at their own risk. See RRS 4, Decision to Race. The responsibility for a boat's decision to participate in a race or to continue racing is hers alone. The race organizers (organizing authority, race committee, protest committee, host club, sponsors, or any other organization or official) will not be responsible for damage to any boat or other property or the

injury to any competitor, including death, sustained as a result of participation in this event. By participating in this event, each competitor agrees to release the race organizers from any and all liability associated with such competitor's participation in this event to the fullest extent permitted by law.

16.2 All boats must comply with the equipment requirements of US Sailing *US Safety Equipment Requirements* (USSER) Nearshore Category except as modified:

-3.8.2 : DSC / GPS capability not required in VHF radio.

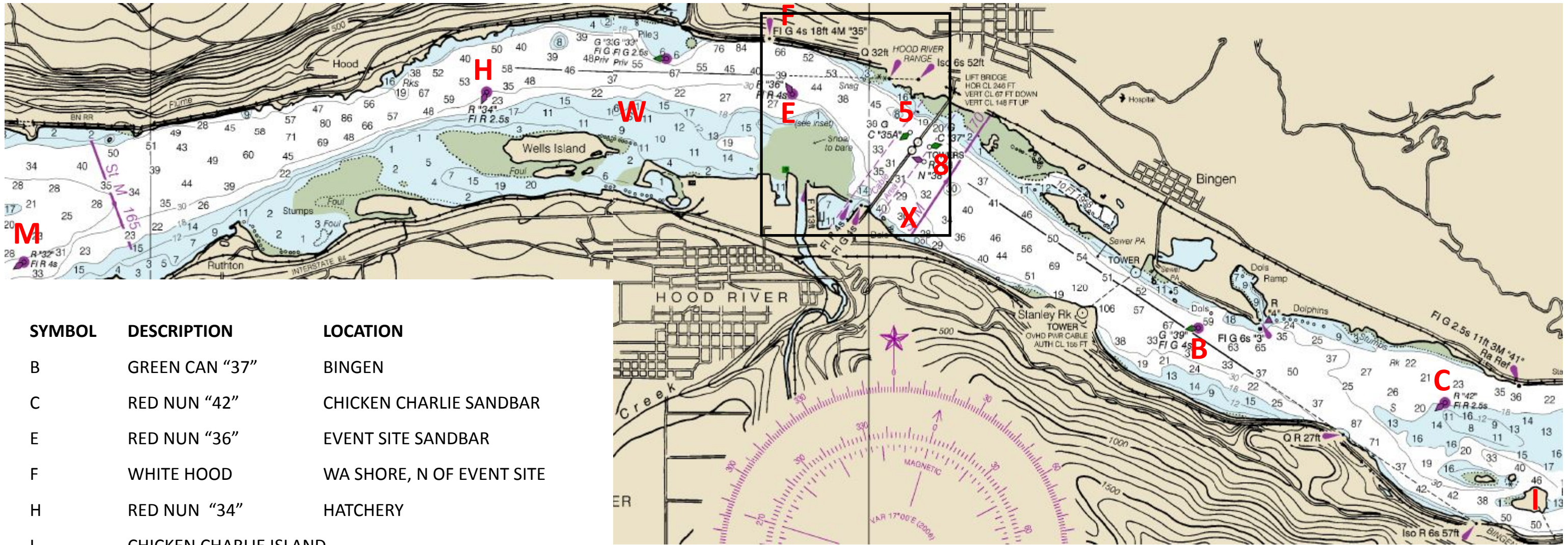
-3.24.3 : This item not required.

16.3 All boats must meet applicable Coast Guard requirements.

16.4 All boats must be equipped with either an inboard or outboard auxiliary engine. Outboard motors may be stowed below decks.

16.5 A boat that retires from a race for any reason shall notify the fleet at the earliest opportunity on VHF channel 72.

16.6 Boats must keep clear of commercial traffic at all times.



SYMBOL	DESCRIPTION	LOCATION
B	GREEN CAN "37"	BINGEN
C	RED NUN "42"	CHICKEN CHARLIE SANDBAR
E	RED NUN "36"	EVENT SITE SANDBAR
F	WHITE HOOD	WA SHORE, N OF EVENT SITE
H	RED NUN "34"	HATCHERY
I	CHICKEN CHARLIE ISLAND	
M	RED NUN "32"	MITCHELL POINT
X	TEMP WHITE BUOY	NORTH OF HR INN
W	TEMP WHITE BOUY	NE OF WELLS ISLAND
5	GREEN CAN "35A"	WEST SIDE OF HR BRIDGE
8	RED NUN "38"	EAST SIDE OF HR BRIDGE

**HRYC WEDNESDAY NIGHT 2015 SPRING SERIES
SAILING INSTRUCTIONS ATTACHMENT A:
COURSE DESCRIPTIONS**

**EVENT SITE STARTING / FINISH LINE:
LINE BETWEEN E AND F
SYMBOL "E" WHEN FIRST OR LAST
LETTER OF COURSE**

**HARBOR STARTING / FINISH LINE:
LINE BETWEEN RED AND GREEN
FLASHERS AT HARBOR ENTRANCE
SYMBOL "P" WHEN FIRST OR LAST
LETTER OF COURSE**

