

2015 Friday Night Race Series - Sailing Instructions
South Beach Yacht Club

1. Rules

- 1.1. The regatta will be governed by the rules as defined by the (RRS) Racing Rules of Sailing.
- 1.2. Racing Rule 40 will be changed as follows: All competitors are required to wear lifejackets or other adequate personal buoyancy while racing. The “Y” flag will not be displayed.

2. Entry

- 2.1. Eligible boats shall complete registration online (www.southbeachyachtclub.org) in accordance with the Notice of Race.
- 2.2. All boats are invited to participate. Each boat shall have a 2015 Northern California PHRF certificate.
- 2.3. Boats without a 2015 Northern California PHRF handicap certificate will be assigned a PHRF rating by the Race Committee.
- 2.4. One Design Fleets will be made at the discretion of the Organizing Authority.

3. Signals Made from Ashore

- 3.1. Signals made from ashore will be displayed from the Mast on the South Beach Yacht Club Clubhouse upper deck.
- 3.2. When the AP flag is displayed from the mast, “1” minute is replaced by “not less than 30 minutes”.

4. Communications with Competitors

- 4.1. Official Notices will be posted on Friday Night Series electronic bulletin board that can be found at: <http://www.regattanetwork.com/event/<event#>>
- 4.2. Changes to the Sailing Instructions will be posted by 1700 on the day they are to take effect
- 4.3. Competitors should monitor VHF 78 for the on the water communications with the Race Committee
- 4.4. Communication from the Race Committee shall not be considered outside assistance. This changes RR 41.

5. Number and Schedule of Races

5.1. Schedule of Races

- 5.1.1. First half: 4/17, 4/24, 5/1, 5/15, 5/22, 5/29, 6/5, 6/19.
 - 5.1.2. Second half: 6/26, 7/17, 7/24, 7/31, 8/7, 8/21, 8/28
- 5.2. The scheduled time for the first Warning Signal is 1830 hours

6. Racing Area

- 6.1. The racing area will be in the South Bay waters of San Francisco Bay

7. Courses & Marks

- 7.1. Courses, mark descriptions and a chartlet are described in Attachment One, “Official Description of Marks and Courses”.
- 7.2. No later than the Warning Signal, a code flag will be displayed from the Race Committee Boat designating the course to be sailed

8. Starting Order

- 8.1. The intended starting order is as follows:

**2015 Friday Night Race Series - Sailing Instructions
South Beach Yacht Club**

Starting Order	Division	Division Flag
1830 Warning	Spinnaker PHRF 100 and below	D (Delta)
	J/105	E (Echo)
	Spinnaker PHRF 101-135	F (Foxtrot)
	Spinnaker PHRF 136 and above	G (Golf)
	Non-Spinnaker 140 and below	H (Hotel)
	Catalina 30 Non- Spinnaker	J (Juliet)
	Non-Spinnaker 141 and above	K (Kilo)

9. The Start

- 9.1. The starting line will be between a staff displaying an orange flag on the RC boat and YRA mark "SC1" OR a temporary Orange Ball called T1.
- 9.2. Each boat must start no later than 10 minutes after its starting signal. A boat that starts later than 10 minutes after her starting signal will be scored DNS. This changes RR 35.
- 9.3. Each boat is requested to sail by the committee boat prior to the first warning to check in.
- 9.4. The PRO reserves the right and option to combine fleets into a single start while still scoring separately by designated fleet.

10. Recalls

- 10.1.** The Race Committee may hail the sail numbers(s) of the boat(s) identified on the course side of the starting line after the starting signal. **The failure of a hail, the failure of a boat hearing the hail or the order of the hails shall not be grounds for redress. This changes RR 62.1(a).**
- 10.2.** General Recall: A fleet with a general recall will have the start moved to the position following the last regular starting sequence. This changes RR 29.2.

11. The Finish

- 11.1. The Finish Line will be the entrance to McCovey Cove, between the north-eastern corner of Pier 48 and the green channel marker FL G 2.5s "PA"
- 11.2. Boats retiring before finishing shall notify the Race Committee as soon as practical either by the assigned VHF channel or 415-xxx-xxxx.

12. Restricted Areas

- 12.1. The Starting line is restricted after for each division after their start.

13. COMMERCIAL TRAFFIC AND SAFETY

2015 Friday Night Race Series - Sailing Instructions
South Beach Yacht Club

14. Boats shall not impede the passage of commercial vessels and shall comply with the USCG Navigation Rules

15. Time Limits

15.1. Boats finishing after 2130 hours will be scored as DNF. This changes RR 35.

15.2. The Race Committee will be on station at the Finish Line until 2100. Boats finishing later than 2100 hours shall take their own finishing time and report it to the Race Committee no later than 2145.

16. Scoring

16.1. Time on Time corrections shall be used; corrected times will be calculated to the nearest second.

16.2. Fleet and division assignments is at the sole discretion of the PRO.

16.3. Four completed races per series (First half or Second half) constitute a series; eight completed races constitute the overall series.

16.4. Discards

16.4.1. There will be one discard per series if 5 races are completed in the series.

16.4.2. There will be an additional discard when there are a total of 12 or more races in the 2015 overall series.

16.5. To be eligible for the overall series, a boat must race in both halves.

16.6. **If a boat causes damage to the Committee Boat, that boat will be scored "DNE" pending protest. This changes RR A5.**

17. PROTESTS AND REQUESTS FOR REDRESS

17.1. Protests and requests for redress shall be written on Standard US Sailing Protest Forms available from the Race Committee. Protests and Requests for Redress for all divisions shall be delivered to a Race Committee representative no later than 2200 hours on the day of the race.

17.2. The protest will be heard the Thursday following the FNS race being protested at 1900 in the Library at South Beach Yacht Club. This shall serve as proper notification per RRS 63.2.

17.3. Except for RRS 69 and at the discretion of the Protest Committee Chair, hearings will take place as scheduled, with or without the presence of all parties.

18. Awards

18.1. Prizes will be awarded after each race for the first place winner in each division.

18.2. Prizes must be picked up by the end of the next race.

18.3. Trophies for first, second and third places for each division will be awarded at the end of the each series half and for the overall series for eligible yachts who competed in both the First and Second half series.

2015 Friday Night Race Series - Sailing Instructions South Beach Yacht Club

Attachment 1 – Course List

Unless otherwise stated, round all marks to Port for courses 1-8.

Course #	Start	Mark	Mark	Mark	Mark	Mark	Mark	Mark	Mark	Mark	Mark
1	SC1/T1	AS1	34	F							
2	SC1/T1	AS1	34	SC1	F						
3	SC1/T1	AS1	NAS1(p) or NAS2(s)	F							
4	SC1/T1	AS1	34	NAS1(p) or NAS2(s)	F						
5	SC1/T1	AS1	34	SC1	AS1	SC1	F				
6	SC1/T1	AS1	SC1	AS1	SC1	AS1	F				
7	SC1/T1	AS1	33	F							
8	SC1/T1	AS1	NAS1(p) or NAS2(s)	SBYC	SC1(s)	F					
9	SC1/T1	SBYC	34	SC1	F						
10	SC1/T1	SBYC(s)	NAS1(p) or NAS2(s)	F							
11	SC1/T1	SBYC(s)	NAS1(p) or NAS2(s)	AS1(p)	SC1(p)	F					
12	SC1/T1	SBYC(s)	SBYC-o	NAS1(p) or NAS2(s)	F						
13	SC1/T1	SBYC(s)	SC1(s)	SBYC(s)	SC1(s)	F					
14	SC1/T1	SBYC(s)	SBYC-o(s)	SC1(s)	SBYC(s)	SBYC-o(s)	SC1(s)	F			
15	SC1/T1	SBYC(s)	SBYC-o(s)	NAS1(p) or NAS2(s)	SBYC(s)	SBYC-o(s)	NAS1(p) or NAS2(s)	F			
16	SC1/T1	SBYC(s)	SBYC-o(s)	SC1(s)	SBYC(s)	SBYC-o(s)	SC1(s)	F			
17	SC1/T1	SBYC(s)	SBYC-o(s)	SC1(s)	SBYC(s)	SBYC-o(s)	SC1(s)	SBYC(s)	SBYC-o(s)	SC1(s)	F
18	SC1/T1	SBYC(s)	SBYC-o(s)	L1(s)	SBYC(s)	SBYC-o(s)	L1 (s)	F			
19	SC1/T1	SBYC(s)	SBYC-o(s)	L1(s)	SBYC(s)	SBYC-o(s)	L1 (s)	SBYC(s)	SBYC-o(s)	L1 (s)	F
20	SC1/T1	SBYC(p)	NAS1(p) or NAS2(s)	F							
21	SC1/T1	SBYC(s)	NAS1(p) or NAS2(s)	AS1(p)	SC1(p)	F					
22	SC1/T1	SBYC(p)	SBYC-o(p)	NAS1(p) or NAS2(s)	F						
23	SC1/T1	SBYC(p)	SC1(p)	SBYC(p)	SC1(p)	F					
24	SC1/T1	SBYC(p)	SBYC-o(p)	SC1(p)	SBYC(p)	SBYC-o(p)	SC1(p)	F			
25	SC1/T1	SBYC(p)	SBYC-o(p)	NAS1(p) or NAS2(s)	SBYC(p)	SBYC-o(p)	NAS1(p) or NAS2(s)	F			
26	SC1/T1	SBYC(p)	SBYC-o(p)	SC1(p)	SBYC(p)	SBYC-o(p)	SC1(p)	F			
27	SC1/T1	SBYC(p)	SBYC-o(p)	SC1(p)	SBYC(p)	SBYC-o(p)	SC1(p)	SBYC(p)	SBYC-o(p)	SC1(p)	F
28	SC1/T1	SBYC(p)	SBYC-o(p)	L1(p)	SBYC(p)	SBYC-o(p)	L1(p)	F			
29	SC1/T1	SBYC(p)	SBYC-o(p)	L1(p)	SBYC(p)	SBYC-o(p)	L1(p)	SBYC(p)	SBYC-o(p)	L1(p)	F

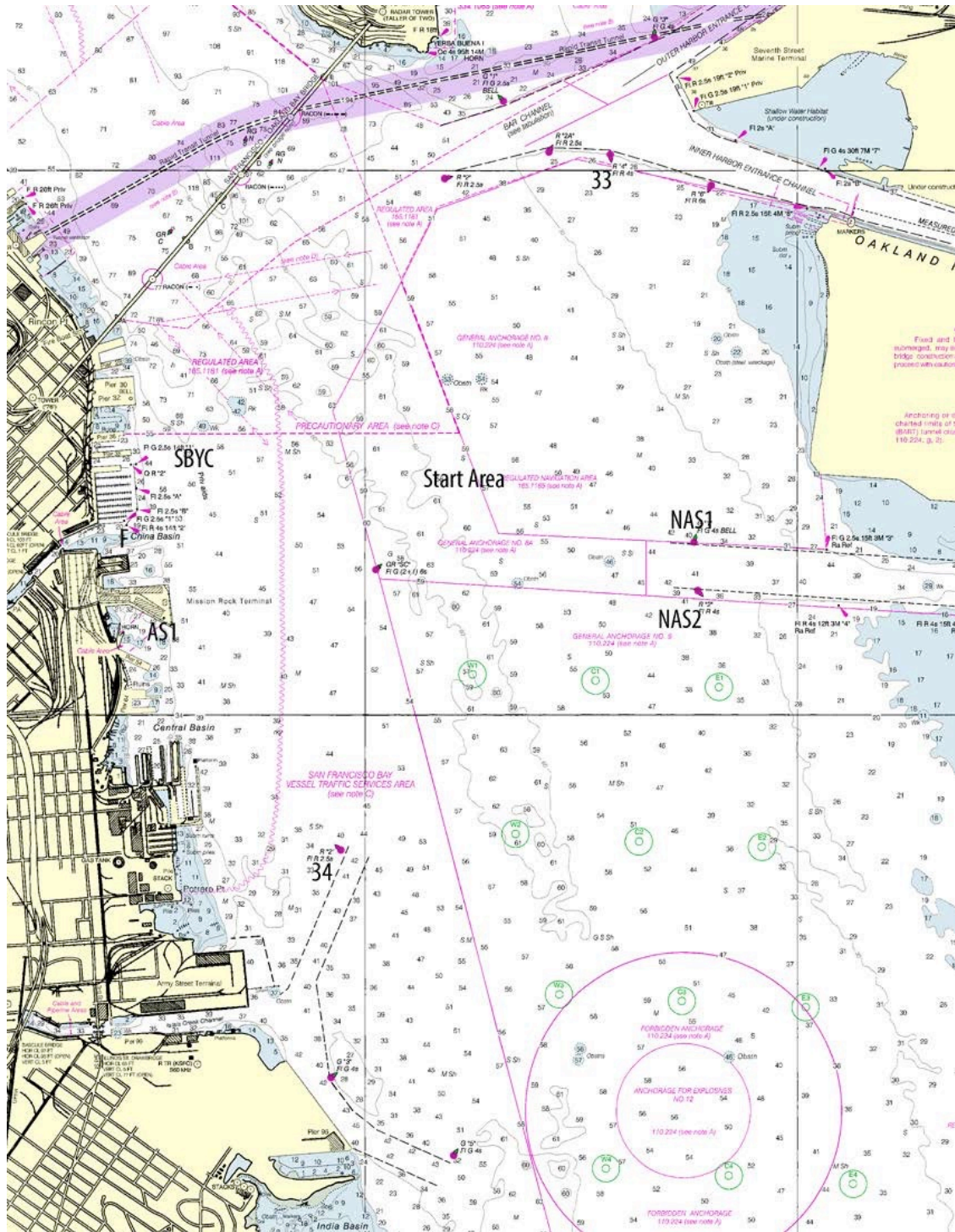
2015 Friday Night Race Series - Sailing Instructions
South Beach Yacht Club

Mark Descriptions

Mark	Mark Description	Mark	Mark Description
AS1	Yellow sphere, approx 0.25 nm East of BVBC	F	Finish line between the eastern corner of Pier 48 and Green channel marker FL G 2.5s "PA"
NAS1	NAS Alameda Channel Mark "1" FL G 4s Bell	NAS2	NAS Alameda Channel Mark "R2" Fl R 4s
SC1	Green & red buoy, "SC" FL G(2+1), approx 1.0 nm ENE of Mission Rock Terminal	NAS1(p) or NAS2(s)	Consider these two marks as a gate entered from the direction of the previous mark.
33	Oak Inner Harbor Entrance, "4" Fl R 4s	34	Red buoy "2" FL R 2.0s, approx 0.5 nm east of Potrero Point
SBYC	Yellow Buoy East of South Beach Harbor breakwater	SBYC-o	A temporary offset mark that may be set up or down current of SBYC mark.
T1	An orange temporary buoy that may be set as the pin end of the start line. If not on Station, SC1 will be the pin end of the start line	L1	A temporary leeward mark that may be set 1-1.5 NM East of SBYC.

2015 Friday Night Race Series - Sailing Instructions

South Beach Yacht Club



2015 Friday Night Race Series - Sailing Instructions
South Beach Yacht Club