



National C Scow Sailing Association

Sailing Instructions

2015 Eastern C-Scow Regatta

Saturday, June 6th – Sunday, 7th, 2015

1 RULES

- 1.1 The regatta will be governed by the rules as defined in the current Racing Rules of Sailing (RRS).
- 1.2 The regatta will also be governed by the class rules of the National C-Scow Sailing Association (NCSSA) and Inland Lake Yachting Association (ILYA).
- 1.3 This regatta is an NCSSA Annual Blue Chip Regatta qualifying event.

2 NOTICES TO COMPETITORS

- 2.1 Notices to Competitors will be posted on the Official Notice Board located at Regatta Headquarters, the Chautauqua Yacht Club, South Lake Drive, Chautauqua, NY, 14722.

3 CHANGES TO SAILING INSTRUCTIONS

- 3.1 Any change to the sailing instructions will be posted before 0930 on the day it will take effect, except that any change to the schedule of races will be posted by 1900 on the day before it will take effect.

4 SIGNALS MADE ASHORE

- 4.1 Signals made ashore will be displayed from a staff on the balcony of Regatta Headquarters
- 4.2 Competitors should monitor the official regatta VHF radio channel(s) for courtesy broadcasts.

5 SCHEDULE OF RACES

- 5.1 Saturday, June 6th: 0900 Competitors Meeting: Regatta Headquarters at Heinz Beach/YAC
0930 Hour Signal for 1st race of the day
1030 Warning Signal for 1st race of the day

Sunday, June 7th: 0930 Hour Signal for 1st race of the day. No warning signal after 1200 hours.

- 5.2 Five races are scheduled for the weekend. It is the intention of the Race Committee to conduct as many races as practical on each day of racing. A minimum of three races shall be considered a series.

- 5.3 No race shall start after 12pm on Sunday, June 7th, 2015.

6 CLASS FLAGS

- 6.1 The C-Scow class shall be a white flag with a blue C-Scow emblem on it.

7 RACING AREA

- 7.1 The racing area will be determined by the weather conditions present at the time.
- 7.2 All races shall occur in the area generally known as the “northern half” of Chautauqua Lake.

8 COURSES

- 8.1 The diagrams in Attachment #1 show the courses, including the approximate angles between legs, the order in which marks are to be passed, and the side on which each mark is to be left. Please see Attachment #1
- 8.2 A leeward gate will be used on the downwind legs of all courses (not reaching legs).

- 8.3 The RC Signal Boat will display the designation of the course to be sailed with letters and numbers and the approximate compass heading from the starting line to the first mark. This will be displayed on a white dry erase board mounted on the transom of the RC Signal Boat. Please see Attachment #1 for course designations.
- 8.4 The Race Committee will make the length of the course to allow for races that will approximate 75-90 minutes in time.
- 8.5 It is the decision of the Race Committee that a boat observed to violate rule 28.1 shall be scored as having not *finished* without a hearing as provided for in RRS Appendix A5.
- 8.6 Except at a gate, boats shall pass between a race committee boat signaling the change of the next leg and the nearby mark, leaving the mark to port and the race committee boat to starboard. This upholds Rule 28.

9 MARKS

- 9.1 Original marks will be inflatable cylinders, orange in color. Gates shall be inflatable cylinders, yellow in color. If any marks are different in shape or color, they will be displayed at the Competitors' Briefing and a notice stating the differences will be posted.
- 9.2 New marks, when used in accordance with RRS 33, will be similar to the original marks in that they will be inflatable cylinders, orange in color.

10 THE START

- 10.1 The Starting Line will be:

From a staff displaying an orange flag on a Race Committee boat at the starboard end, to the course side of a starting mark at the port end.

- 10.2 RRS 30.2, 30.3 and 36 are changed as follows:

- a) If a General Recall is signaled after the starting signal, all competitors who received a 20% scoring penalty under RRS 30.2 or were disqualified under RRS 30.3 in the recalled race are again eligible to race without penalty.
- b) After the start, boats that have not complied with RRS 30.3 will be identified on a white dry-erase type board on the transom of the RC signal boat. After receiving notification, such boats shall keep clear of all other boats unless they intend to act under RRS 60.1(b).

11 CHANGE OF COURSE AFTER THE START

- 11.1 To change the next leg of the course, the race committee will move the original mark (or the finishing line) to a new position and signal the change accordingly.

12 THE FINISH

- 12.1 The finishing line will be between a staff displaying an orange flag on a race committee boat and the course side of a nearby mark.
- 12.2 A 2nd Substitute flag, which is a blue and white pennant, displayed by the RC in the finishing area indicates that another race will be started as soon as possible.
- 12.3 Race Signal for flag S is modified as follows: When finishing at the end of a leg that ends at a leeward gate, the finishing line will be between an RC boat displaying flag S and the remaining gate mark. This changes rule 32.2(c). Boats that are racing, but not finishing shall treat the RC boats or the RC boat and the nearby mark as gate marks.

13 PENALTY SYSTEM

- 13.1 Penalties for breaking RRS 42: Appendix P will apply.
- 13.2 Penalty for breaking rules of Part 2 (RRS44): The Two-Turns Penalty, RRS 44.2 shall apply.

14 TIME LIMITS AND TARGET TIMES

- 14.1 The time limit will be two hours for each race.
- 14.2 Boats still racing 30 minutes after the first boat sails the course and finishes will be scored the position of the last boat to finish plus 2. This changes RRS 35 and A4.1.
- 14.3 No race shall be sailed beyond one hour before sunset. Should a situation present itself that would result in sailing past this limit, the current race will be shortened in accordance with Rule 32.

15 PROTESTS AND REQUESTS FOR REDRESS

- 15.1 A boat intending to protest about an incident that occurs in the racing area shall notify the RC finish boat of her intention, including the sail number of the boat (s) being protested. This changes RRS61.1 (a)
- 15.2 Upon landing, the RC shall post the Dock Time of the RC signal boat and the numbers of all known protesting and protested boats and RC actions.
- 15.3 Protests shall be written on forms available at Regatta Headquarters and lodged with the Protest Committee Chairperson or other designated person within the protest time limit, which is one hour after dock time.

- 15.4 Protest hearing notices will be posted on the official notice board at Regatta Headquarters within 15 minutes of the protest time limit to inform competitors where and when there is a hearing to which they are parties, or named as witnesses.
- 15.5 The protest committee will hear protests as soon as possible, in approximately the order of receipt.
- 15.6 On the last scheduled race day, a party to a hearing may ask for a reopening no later than one hour after being informed of the decision. This changes RRS 66.
- 15.7 If the race committee posts a list of boats scored OCS, ZFP or BFD on the official notice board before the protest time limit, a request for redress based on such a posted score shall be made no later than one hour after the protest time limit. This changes RRS 62.2

16 SCORING

- 16.1 The low point system, RRS A4, will apply, except that RRS A2 is changed so that each boat's total score will be the sum of her scores for all races.

17 COMMUNICATION

- 17.1 VHF radio channel 72 will be the primary means used by the RC to communicate with competitors. Alternate channels will be 71 and 68.
- 17.2 Failure to hear or understand a RC transmission shall not constitute grounds for redress. This upholds RRS 62.1 (a).
- 17.3 The only communication devices that may be used by competitors when racing are: (a) a weather monitor, (b) a VHF radio tuned to receive only RC transmissions that are intended for all boats, and (c) a cell phone that may be used for emergency purposes only. The penalty for breaking this rule will be total disqualification from the regatta or such lesser penalty as determined by the Protest Committee.

18 DISCLAIMER

- 18.1 Sailing is an activity that has an inherent risk of damage and injury. Participants in this event are participating entirely at their own risk. See RRS Rule 4, Decision to Race. The race organizers (the organizing authority, race committee, protest committee, host club, sponsors, or any other organization or official) will not be responsible for damage to any boat or other property or the injury to any participant, including death, sustained as a result of participation in this event. By participating in this event, each participant agrees to release the race organizers from any and all liability associated with such participant's participation in this event to the fullest extent permitted by law.

ATTACHMENT #1: COURSE ILLUSTRATIONS

COURSE DISPLAY

THE COURSE IS A COMBINATION OF LAPS DISPLAYED USING THE TYPE OF LAP (W = WINDWARD/LEEWARD LAP, T = TRIANGLE LAP), A NUMBER INDICATING THE NUMBER OF SUCCESSIVE REPETITIONS OF THAT PARTICULAR TYPE OF LAP, AND A MODIFIER (+) IF THE FINISH IS TO BE TO WINDWARD.

EXAMPLES

W3+ = W—W—W—UPWIND LEG TO FINISH

W2T+ = W—W—T—UPWIND LEG TO FINISH

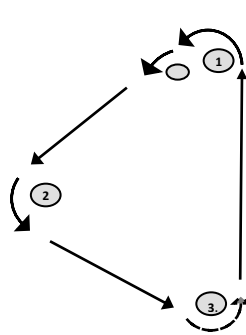
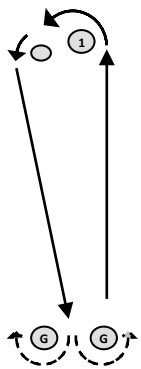
W3 = W—W—W (DOWNWIND FINISH)

W2T = W—W—T (DOWNWIND FINISH)

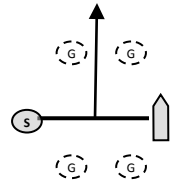
WTW+ = W—T—W—UPWIND LEG TO FINISH

W2T2+ = W—W—T—T—UPWIND LEG TO FINISH

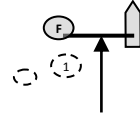
NOTE: AN RC BOAT MAY BE SUBSTITUTED FOR MARK(S) (S) OR (F) ON STARTING OR FINISHING LINES



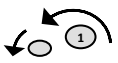
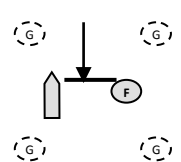
STARTING LINE



+ = UPWIND FINISHING LINE



DOWNWIND FINISHING LINE



1 = WINDWARD MARK WITH OFFSET



G = LEEWARD GATE



2 = GYBE MARK

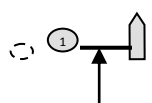


3 = LEEWARD MARK IF TRIANGLE OR NO GATE

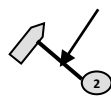


MARKS TO BE IGNORED IF PRESENT

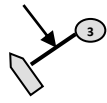
FINISHING LINES – RULE 32 (REDUCED NUMBER OF LEGS)



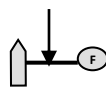
UPWIND FINISHING LINE



GYBE MARK FINISHING LINE



LEEWARD MARK FINISHING LINE



DOWNWIND FINISHING LINES

ALLOWABLE ROUND-AN-END COURSES WITH MID-STARTING LINE BOAT (ALSO SEE S1s)

