



OPTIMIST / 420 / LASER RADIAL SAILING INSTRUCTIONS

GLSS DINGHYFEST

JULY 8, 2015

1250 S. Lake Shore Dr., Fontana, WI

1 Organization and Rules

- 1.1 The regatta will be organized by the Geneva Lake Sailing School.
- 1.2 The regatta will be governed by the current Racing Rules of Sailing. If there is any conflict between these Sailing Instructions and the Notice of Race, these Sailing Instructions will take precedence.
- 1.3 Competitors shall not discharge rubbish into the water. While afloat, trash may be deposited on support boats and Committee Boats.

2 Eligibility

Optimist fleet category is determined by the sailor's age on July 8th, 2015: Red – ages 13, 14, 15; Blue – ages 11, 12; White- age 10 and under. Green fleet is for novice sailors.

3 Changes to Sailing Instructions – Notices to Competitors

Any changes to the SI and other notices to competitors will be posted on the official notice board, no later than 8:00 a.m., CDT.

4 Signals made ashore

- 4.1 Signals made ashore will be displayed on the official signal mast situated near the main Club House.
- 4.2 When flag AP is displayed ashore, "1 minute" is replaced with "not less than 30 minutes" in race signal AP.
- 4.3 When a signal is displayed over a Class flag, the signal applies only to that Class.
- 4.4 Signals made ashore will be copied by the Race Committee signal boat when off her moorings.

5 Race Schedule – Format of the Regatta

5.1 Schedule – All times Central Daylight Time

Wednesday, July 8

- 07:30 – 08:45, **Check In for All Sailors**
- 08:55 Skippers' meeting
- 9:45 am First warning of the day for 420 Fleet
- 9:50 am First warning of the day for Laser Radial Fleet
- 9:55 am First warning of the day for Optimist RWB Fleet
- 10:30 am First warning of the day for Optimist Green Fleet

Back- to- back racing to follow,

5.2 Four races are scheduled for Optimist RWB; Eight collegiate style races are scheduled for 420 and Laser Radial; a maximum of ten races can be held in Optimist Green fleet. One race per fleet constitutes a regatta.

5.3 Lunch on the water or ashore at the discretion of the race committee; Green Fleet will eat on

shore regardless.

5.4 No warning signal shall be made later than 3:30 p.m.

6 Racing Area

The racing area will be the navigable water of Geneva Lake.

7 The Courses

7.1 The course diagrams showing the marks and the order in which they are to be passed or rounded appears in Appendix 1 of these sailing instructions.

7.2 When there is a leeward gate, boats shall sail between the gate marks from the direction of the previous mark and round either gate mark.

7.3 The start/finish gate is closed. A racing boat shall not sail through a start or finish line that is positioned in the approximate middle of the windward/leeward leg of a modified course except when starting or finishing.

8 Course marks

The course marks are orange balls. New marks, when used in accordance with SI 10, will be orange shapes.

9 The Start

9.1 The races will be started by using RRS 26 with the warning signal given 5 minutes before the starting signal.

9.1(a) Class Flags

Laser Radial – letter “L” on a yellow field

420 – digits 420 on a blue field.

Optimist RWB – Optimist IO on a yellow field

Optimist Green – Optimist IO on a green field

(b) On the Laser/Radial, 420, and Optimist Green Fleet courses the race committee has the authority to suspend the use of flag signals in the starting sequence and, at its discretion, substitute verbal or other sound signals. This is a change to RRS 26.

9.2 The starting line will be a line between staffs displaying orange flags on Committee Boats at each end of the line, or between a staff and an orange shape, or two orange shapes.

9.3 A boat starting later than 10 minutes after her starting signal will be scored Did Not Start without a hearing.

9.4 Following the display of the individual recall signal, the RC will **attempt to announce the racing number** of all boats identified on the course side of the starting line at the starting signal. Such announcement is a courtesy and failure by the RC to make the announcement, or of boats to hear or understand it, shall not constitute grounds for redress.

10 Change of the position of the next mark

10.1 The change of the next leg of a course will be signaled in accordance with RRS 33(a).

11. The Finish

11.1 The finishing line will be a line between a staff displaying an orange flag on the Committee Boat at the starboard end of the line and an orange shape at the port end of the line, or between an orange shape at the starboard end of the line and an orange shape at the port end of the line.

12 Time Limits

12.1 The time limit for all fleets is 75 minutes.

12.2 Boats still racing 20 minutes after the first boat sails the course and finishes will be scored the position of the last boat to finish plus 2. This changes RRS 35 and A4.1.

13 Protests and requests for redress

13.1 Protest forms are available at the Geneva Lake Sailing School. Protests and requests for redress or reopening shall be delivered there within the appropriate time limit.

13.2 For each class, the protest time limit is 60 minutes after the last boat has finished the last race of the day or the race committee signals no more racing today, whichever is later.

13.3 Notices will be posted no later than 30 minutes after the protest time limit to inform competitors of hearings in which they are parties or named as witnesses. Hearings will be held in the protest room, located at the GLSS building.

14 Scoring

The Low Point scoring system of Appendix A will apply, except that each boat's series score shall be the total of her race scores. The worst score will not be excluded. This is a change to RRS A2.

15 Safety Regulations

15.1 Each competitor must wear a US Coast Guard approved personal flotation device, properly secured at all times while on the water unless while temporarily adding or removing clothing.

15.2 Each Optimist competitor shall carry a whistle attached to his/her clothing.

15.3 A loop shall be tied to the end of the bowline.

15.4 A boat that retires from a race shall notify the race committee as soon as possible.

15.5 Competitors who require assistance should so signify by blowing a whistle or waving one arm. The RC reserves the right to assist a competitor who in the opinion of the Committee, requires assistance, regardless of the wishes of the competitor.

16 Liability

16.1 Participants compete entirely at their own risk.

16.2 The Organizing Authority and any other party involved in the organization of this regatta, accept no liability whatsoever for any injury, damage, loss or claim, whether personal or material, incurred by or inflicted to participants before, during or after the regatta. Competitors must carry property and liability insurance covering all risks.

17. Prizes

Optimist RWB Fleet: Top three in each red, blue and white fleet, ten overall; Optimist Green Fleet: top ten overall and participation awards. 420: Top Three Overall. Laser Radial: top three overall.

COURSE ILLUSTRATIONS

COURSE DISPLAY SHORTHAND

WINDWARD/LEEWARD COURSES ARE DESIGNATED WITH A "W" FOR COURSES THAT FINISH UPWIND, AND AN "L" FOR COURSES THAT FINISH DOWNWIND. THE NUMERAL ACCOMPANYING THE COURSE DESIGNATION INDICATES THE NUMBER OF LEGS OF THE COURSE.

ALL OTHER COURSES ARE DESIGNATED BY A COMBINATION OF LAPS DISPLAYED USING THE TYPE OF LAP (T = TRIANGLE LAP), A NUMBER INDICATING THE NUMBER OF SUCCESSIVE REPETITIONS OF THAT PARTICULAR TYPE OF LAP, AND A MODIFIER (+) IF THE FINISH IS TO BE TO WINDWARD.

WINDWARD/LEEWARD EXAMPLES

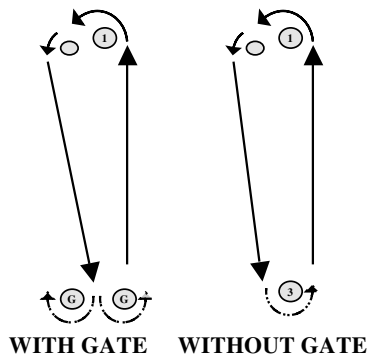
- W3 = 3 LEGS (FINISHING UPWIND)
- W5 = 5 LEGS (FINISHING UPWIND)
- L4 = 4 LEGS (FINISHING DOWNWIND)
- L6 = 6 LEGS (FINISHING DOWNWIND)

OTHER COURSE EXAMPLES

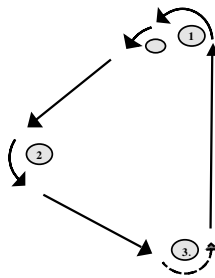
- WT+ = WINDWARD LEEWARD FOLLOWED BY TRIANGLE PLUS UPWIND LEG TO FINISH
- W2T = TWO WINDWARD LEEWARD LAPS PLUS A TRIANGLE, FINISHING DOWNWIND
- O+ = TRIANGLE LAP FOLLOWED BY A WINDWARD LEEWARD LAP PLUS UPWIND LEG TO FINISH

NOTE: AN RC BOAT MAY BE SUBSTITUTED FOR MARK(S) (S) OR (F) ON STARTING OR FINISHING LINES

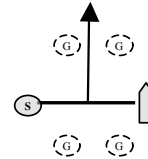
W = WINDWARD/LEEWARD LAP



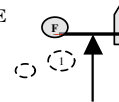
T = TRIANGLE LAP



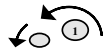
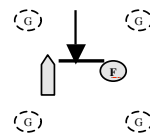
STARTING LINE



+ = UPWIND FINISHING LINE



DOWNWIND FINISHING LINE



1 = WINDWARD MARK WITH OFFSET



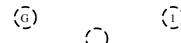
G = LEEWARD GATE



2 = GYBE MARK

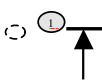


3 = LEEWARD MARK IF TRIANGLE OR NO GATE



MARKS TO BE IGNORED IF PRESENT

FINISHING LINES - RULE 32 (REDUCED NUMBER OF LEGS)



UPWIND FINISHING LINE



GYBE MARK FINISHING LINE



LEEWARD MARK FINISHING LINE



DOWNWIND FINISHING LINES

ALLOWABLE ROUND-AN-END COURSES WITH MID-STARTING LINE BOAT (ALSO SEE SIs)

