

35th Annual Solomons Island Invitational Race

Friday, 10 July 2015

Hosted by
Eastport Yacht Club

SAILING INSTRUCTIONS

1 RULES

- 1.1 Racing will be governed by the rules as defined in the current *Racing Rules of Sailing* (RRS), the Notice of Race, Sailing Instructions (SIs), and any amendments thereto. In the event of conflict between the NoR and the SIs (or amendments thereto), the SIs as amended shall take precedence. This changes RRS 63.7.
- 1.2 From sunset to sunrise, when two (2) boats on the same tack are within three (3) boat lengths (measured by the longer boat), the boat clear ahead may not sail above her proper course, and the boat clear astern, if she elects to pass to windward, must do so at least two (2) boat lengths above the leeward boat.

2 ENTRIES

- 2.1 With the exception of the Cruising class, entries shall only be accepted from owners or charterers of competing boats who are members of US Sailing.
- 2.2 Competitors shall register with the organizing authority and pay the entry fee prior to 2100 hours on Wednesday, 08 July 2015.
- 2.3 Total entries may be limited to one hundred seventy-five (175) boats on a first come, first served basis.
- 2.4 All boats shall comply with their Class Rules.
- 2.5 PHRF entries and Beneteau Cup participants shall have a valid 2015 PHRF of the Chesapeake measurement certificate. Cruising class entrants may request a provisional handicap rating from the Eastport Yacht Club (EYC) Race Committee (RC).

3 NOTICES TO COMPETITORS

- 3.1 Notices to Competitors shall be posted on the Official Notice Board located outside, near the ground floor rear entryway doors and "Sparky's Shed" on the EYC grounds, and posted on the following EYC website: <http://www.eastportyc.org/solomons>.
- 3.2 Notices after the start of racing shall be made on the Official Notice Board at the Holiday Inn Solomons waterside patio area.

4 CHANGES TO SAILING INSTRUCTIONS

Any changes in the SIs shall be posted before 2000 hours on Thursday, 09 July 2015.

5 SIGNALS MADE ASHORE

- 5.1 Signals made ashore before the race start shall be displayed from the EYC flagpole, located on the waterside of the clubhouse. Signals made after the start shall be displayed at the Holiday Inn Solomons waterside patio area. The RC may announce signals posted ashore on VHF Channel 73. This announcement, lack thereof or contents thereof shall not be grounds for Redress or Protest.
- 5.2 When flag AP is displayed ashore, "1 minute" is replaced with "not less than 60 minutes" in race signal AP. This changes RRS Signals.

6 SCHEDULE

The schedule of events is:

Fri, July 10	1815	Check-In boat on station
	1845	Warning signal for first class
Sat, July 11	0600-1200	Post-race party at Holiday Inn Solomons
	1200	Race time limit
Sat, July 25	1800-2100	Awards party at EYC

7 CLASS FLAGS – ORDER OF START

- 7.1 All competing boats shall fly class flags as specified in CBYRA Green Book General SI 4, or as noted in SI 7.2 below.
- 7.2 It is the intention of the RC to start classes beginning at 1845 hours. The start order will be posted as an SI Amendment before 2000 hours on Thursday, 09 July 2015.

8 RACING AREA

The racing area shall be the Severn River, Chesapeake Bay, and Patuxent River.

9 MANDATORY CHECK-IN

- 9.1 The RC shall use a separate check-in boat. The boat shall fly a solid yellow flag and shall be located approximately 0.2 nm SE of Triton Light off the US Naval Academy seawall.
- 9.2 Each boat shall pass close astern of the check-in boat and hail her sail number until acknowledged by a return hail from the check-in boat.
- 9.3 Boats failing to check-in that are recorded as finishing the race shall be scored with scoring penalty of 20% of the number of starters in her class without a hearing. This changes RRS A5.

10 COURSES

- 10.1 The PHRF A0, PHRF A1, PHRF A2, and J/35 classes shall sail the LONG course, shown in Figure 1. The course distance is 54.0 nautical miles.
- 10.2 The Multihull A, Multihull B, J/105, PHRF B, J/30, PHRF C, Alberg 30, PHRF N, and Cruising classes shall sail the SHORT course, shown in Figure 2. The course distance is 44.0 nm.

11 THE START

- 11.1 Races shall be started using RRS 26. No Warning signal shall be made prior to 1845 hours.
- 11.2 The starting line shall be between a staff displaying an orange flag on the starboard end RC Signal Boat, and the course side of Severn River lighted buoy "G9" (FI G, Q).
- 11.3 The starting area extends one hundred (100) yards beyond each end of the starting line and one hundred fifty (150) yards behind the line and its extensions. Boats whose Preparatory signal has not been made shall keep clear of the starting area and of other boats whose Preparatory signal has been made.
- 11.4 A boat starting more than ten (10) minutes after the starting signal of the last class shall be scored Did Not Start (DNS). This changes RRS A4.

12 RECALLS

- 12.1 The Race Committee intends to hail the sail numbers of On Course Side (OCS) boats on VHF channel 73. The failure of any boat to hear the hail, the timing of the hail, the failure to hail any boats, and the order of the boats in the hail shall not be grounds for granting redress. This changes RRS 41 and 62.1.
- 12.2 If a general recall is made, classes which have not been recalled shall be started as though the recall(s) had not been made. This modifies RRS 29.2.
- 12.3 Recalled classes shall start in the order they were recalled after the last scheduled start.

13 THE FINISH

- 13.1 The Finish Line shall be between an orange flag displayed on a staff on the RC Finish Boat and Patuxent River lighted mark "G5" (FI G, 4s).
- 13.2 The RC Finish Boat expects to be on station on the north side of Patuxent River lighted mark "G5" from approximately 2330 hours on Friday, 10 July, until four (4) hours after the first boat in each class has finished, or 1200 hours on Saturday, 11 July, whichever occurs first, unless all competitors have finished or withdrawn.
- 13.3 When finishing before sunrise, boats shall illuminate their sail numbers within two hundred (200) yards of the finish line, until two hundred (200) yards past the finish line.
- 13.4 If the RC Finish Boat is not on station, a boat shall take its finish time when it passes Patuxent River lighted mark "G5" within one hundred (100) yards and the mark bears 165° degrees magnetic. Boats recording their own finish shall report their finish time to the RC as soon as practical after finishing by contacting the Principal Race Officer (PRO) at (410) 693-8394.

14 PENALTY SYSTEM

- 14.1 RRS 44.3 shall apply as modified below.
 - (a) RRS 44.3(a) is changed to allow Flag "I" to be used as the yellow flag.

- (b) A boat that complies with some, but not all of the requirements of RRS 44.3 shall receive a 40% Scoring Penalty without a hearing. This changes RRS 63.1.

14.2 RRS 44.3(c) is changed as follows:

Infraction	% Boats Entered	Min # Points
Part 2	40%	4
RRS 30.2 (Z-flag Rule)	20%	2
RRS 31 (Touching a Mark)	40%	4

14.3 To comply with RRS 44.3(b), a competitor shall also inform the RC by hailing on VHF channel 73 until acknowledged.

15 TIME LIMIT

15.1 The time limit is 1200 hours on Saturday, 11 July 2015.

15.2 Boats failing to finish within the time limit shall be scored Did Not Finish.

16 PROTESTS AND REQUESTS FOR REDRESS

16.1 RRS/US Appendix T, Section D (Arbitration), shall apply.

16.2 A boat intending to protest about an incident that occurs in the racing area shall notify the RC finish boat of her intention either by hail or by radio on VHF channel 73. She shall include the sail number of the boat(s) being protested. This changes RRS 61.1(a).

16.3 Protests shall be filed with the Protest Secretary at the Holiday Inn, prior to 1300 hours on Saturday, 11 July 2015, or sixty (60) minutes after the RC docks, whichever is later. The specific location of the Protest Secretary shall be posted on the Official Notice Board.

16.4 Notices of hearing shall be posted no later than thirty (30) minutes after the protest time limit to inform competitors of hearings in which they are parties or named as witnesses.

16.5 Breaches of SIs 9, 17, 19, 20, and 22 will not be grounds for a protest by a boat. This changes RRS 60.1(a). Penalties for these breaches may be less than disqualification if the jury so decides.

16.6 Hearings shall start as soon as possible after protests have been filed on Saturday, 11 July 2015, at the Holiday Inn. The Protest Committee will attempt to hear protests in the order of receipt by the Protest Secretary. Representatives of boats who are parties to a hearing shall remain on call in the vicinity of the protest room.

16.7 When the RC or Protest Committee protests a boat, the requirements of RRS 61.1(b) to notify the boat may be met by posting a list of protested boats on the Official Notice Board and the Protest Board before the end of the protest time limit.

17 SAFETY

17.1 All equipment required by the US Coast Guard, the RRS, these SIs, and the respective class rules, shall be aboard and be readily available. Any participating class or the RC has the right to inspect, without notice, any boat for the required equipment.

17.2 It is recommended that all boats meet the current ISAF Recommendations for Offshore Sailing including Offshore Racing Council Special Regulations for Category 4, as amended.

17.3 Boats that have checked in as starters and subsequently withdrawn prior to finishing shall notify the PRO as soon as practical at (410) 693-8394. The message should include the boat's name, sail number, and class. Failure to do so may result in the boat being denied entry in this event next year.

17.4 A boat may not exercise right of way, cross in proximity to, or interfere with reasonable transit of the race area by commercial ships, tugs, or barges. Boats must take evasive action well in advance of a potentially dangerous situation. The US Coast Guard, ship captains, and bay pilots have been encouraged to report any incident(s) they observe.

17.5 The Race Committee or Protest Committee may protest a boat for SI 17.4 based on information received from any source. The protest time limit does not apply. This changes RRS 60.2, 60.3, and RRS 61.3.

17.6 RRS 42.3 (Propulsion - Exceptions) is changed by adding: "(j) A boat that is unavoidably without way in a ship channel may use any means of propulsion to clear the channel at the approach of commercial traffic provided that, when becoming clear of the commercial traffic, the boat has not improved their position as a result of this action. A boat claiming this exception shall report the incident in writing to the protest committee within the protest time limit, with all the facts necessary to substantiate the boat's speed and change of position during the incident."

17.7 RRS 62.1 (Redress) is changed by adding: "(e) clearing a ship channel in compliance with SI 17.6."

17.8 A boat racing between sunset and sunrise that is in close proximity to other vessels shall illuminate her sails so that she is clearly visible. This requirement is in addition to the navigation lights and shapes required by the Inland Rules and other applicable government regulations.

18 SCORING

RRS Appendix A4, Low Point System, shall apply.

19 RADIO COMMUNICATION

19.1 A boat may not make any radio transmissions while racing except on VHF Channel 16 or with the race committee on the courtesy broadcast channel. While racing, a boat shall not receive ANY communication not available to all boats. This restriction includes mobile devices.

19.2 Boats are encouraged to make contact with commercial traffic on VHF channel 13, as required for safety.

20 DISPOSAL OF TRASH

This is a Clean Race; all competitors are encouraged not to use disposable water bottles. Racers should refrain from throwing trash in the water and recycle all appropriate items. Boats observed purposefully discharging trash into the water shall either be disqualified or subject to other suitable disciplinary action, or both.

21 DISCLAIMER OF LIABILITY

Competitors participate in the race entirely at their own risk; see RRS 4 (Decision to Race). The organizing authority or any other party involved in the organization of the race shall not accept any responsibility or liability for material damage or personal injury or death sustain in conjunction with or prior to, during, or after the race.

22 INSURANCE

Each boat shall be insured with valid third party liability insurance with a minimum coverage of \$300,000.

23 SOCIAL

23.1 Prizes in each class shall be given as follows:

- 1st Place in all classes;
- 2nd Place for five (5) or more entries;
- 3rd Place for seven (7) or more entries;
- 4th Place for fifteen (15) or more entries; and,
- 5th Place for twenty (20) or more entries.

23.2 The F. Rollins Maxwell, Jr. Memorial Trophy shall be presented to the boat with the fastest average speed (elapsed time / length of course).

23.3 The Zahniser Fleet Trophy shall be awarded to the winner of the class deemed most competitive.

23.4 The Awards Party will begin on Saturday, 25 July 2015, at 1800 hours, at EYC. The party will include a light dinner; dinner for the skipper and up to three (3) crew are included in the registration fee.

23.5 Prizes not picked up during the awards party will be available at EYC beginning on Monday, 27 July 2015. Trophies not claimed within thirty (30) days of the race shall be forfeited.

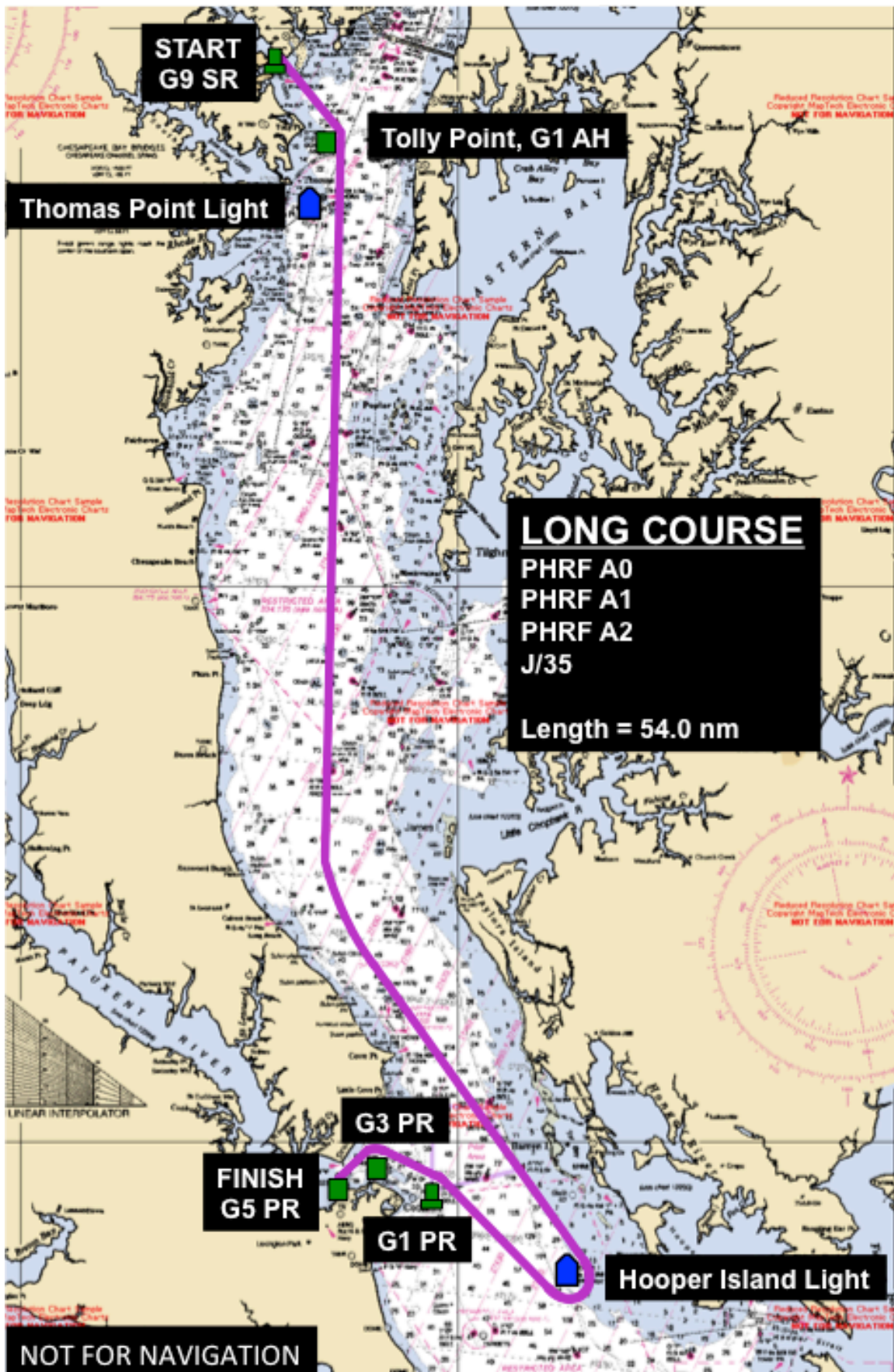


FIGURE 1. Solomons Island Invitational Race – LONG Course

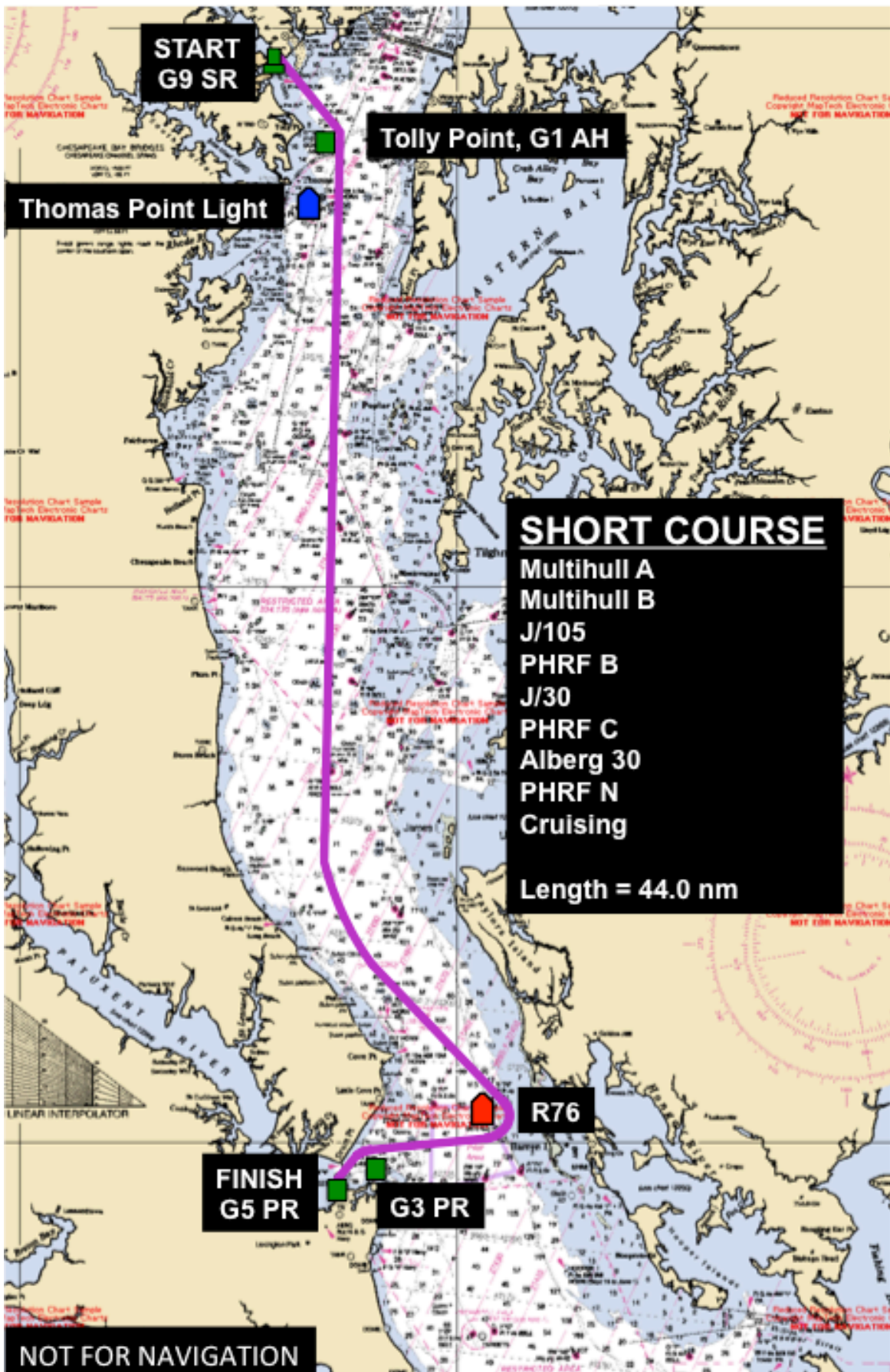


FIGURE 2. Solomons Island Invitational Race – SHORT Course