

Single Hand & Mixed Doubles Regattas

Galveston Bay Texas

Aug 15 & 16, 2015

Galveston Bay Cruising Association

1500 Marina Bay Dr. Suite 1592 • Building #113B • Clear Lake Shores, TX

1. RULES

The regatta will be governed by the *rules* as defined in the current 2013-2016 *Racing Rules of Sailing*, the Notice of Race, any OD Class Rules and these Sailing Instructions.

The following RRS are modified herein:

Sailing Instruction 6.2 modifies RRS 62.1(a)

Sailing Instruction 9.2 & 9.3 modifies RRS 26

Sailing Instruction 13 modifies RRS 61

Sailing Instruction 15 modifies RRS 35

2. NOTICES TO COMPETITORS

Notices to Competitors will be posted at:

https://www.regattanetwork.com/clubmgmt/applet_club_events.php?CLUB_ID=162 .

Notices regarding Protests will also be posted on the door of the GBCA office.

3. CHANGES TO THE SAILING INSTRUCTIONS

Any change to the sailing instructions or notice of race will be posted before 0800 on the day it will take effect.

4. WARNING SIGNAL

4.1 The warning gun for the first race of the Single Hand Regatta on Saturday will be no earlier than 1300.

The warning gun for the first race of the Mixed Doubles Regatta on Sunday will be no earlier than 1300.

Subsequent races for each class will follow as soon as possible after the end of the previous race.

5. Racing Area

The racing area will be in the part of Galveston Bay between Seabrook and the Houston Ship Channel, and between San Leon and the Bayport Ship Channel. Boats shall not enter the Houston Ship Channel or Bayport Ship Channel while *racing*. The Houston Ship Channel and the Bayport Ship Channel are designated as obstructions.

6. RADIO COMMUNICATION

6.1 Radio communication will be conducted on VHF channel 69.

6.2 In addition to signaling Individual Recalls in accordance with RRS 29.1, as a courtesy, the Race Committee will attempt to broadcast the names or sail numbers of boats that have started early. Failure to make such a broadcast, failure of a boat to receive that broadcast, a boat's order in that broadcast, or the promptness of that broadcast will not be grounds for redress. This modifies RRS 62.1(a).

7. CHECK-IN PROCEDURE

All yachts intending to race shall check in with the Race Committee on VHF Channel 69 prior to their warning signal.

8. START LINE / FINISH LINE

The Start Line / Finish Line will be approximately 0.6nm south of Clear Lake channel marker 1, between an Orange Flag displayed from the Signal Boat and the course side of a nearby Orange Mark.

9. THE START

9.1 The starting line will be between the staff displaying an orange flag on the Signal Boat on the starboard end and the course side edge of a nearby Mark at the port end of the line.

9.2 This is a reverse start (pursuit) race, with the (GPS) start time for each boat based on its PHRF rating following the 1300 hours. See the accompanying Appendix for assigned boat start times. This modifies RRS 26

9.3 The Race Committee will give no additional starting signals, except to monitor and call individual boats OCS prior to their assigned start time with sound and the individual recall flag. This modifies RRS 26. Any boat(s) signaled as OCS at their respective starting *time* shall thereafter sail from the course side across the starting line or one of its extensions to the pre-start side before *starting*.

9.4 The signal boat *may* broadcast occasional time checks on VHF 69 until all boats have started.

10. COURSE and MARKS

10.1 Courses will be signaled by a numeral pennant correlating with the course diagrams described in Appendix A. The approximated heading and distance to each mark are also described.

10.2 Start will be Pursuit style according PHRF rating as described in Appendix B for the primary race. If a second race is attempted, the start will be according to the same schedule with adjustment to the next top of the hour.

10.3 Fixed mark courses will use marks "E", "H", "M52" and two 8' Tetrahedrons dropped, one in front of the Todville Road shoreline and the second in front of the San Leon shoreline. Approximate coordinates and description of the marks are:

Mark	Approximate Coordinate	Description
Start/Finish Gate	N 29° 32.567' W 094° 59.545'	<i>RC Signal boat "Tramp" and a nearby orange Tetrahedron</i>
E	N 29° 35.787' W 094° 56.935'	<i>The Low Range Marker (Upper Range "A") in Galveston Bay. The mark is an orange and white structure near Houston Ship Channel Marker #73, 0.23 nm NNW of the old low range.</i>
H	N 29° 33.255' W 094° 56.542'	<i>A platform located in Galveston bay, approximately 1.3 nm WSW of the Houston Ship Channel marker #65.</i>
M52	N 29° 31.808' W 094° 54.597'	<i>Galveston Shellfish Harvesting Boundary Marker</i>

Boats shall not enter the Houston Ship Channel. The Houston Ship Channel is designated as an Obstruction. A chart showing the relative position of the marks will be available as Appendix A. This chart is schematic in nature and is not to be used for navigation.

In the event a mark is missing, boats shall round the coordinates of the missing mark.

11. THE FINISH

The Finish Line will be between a staff displaying an orange flag on the Signal Boat on the port end and the course side edge of the starboard end Orange Mark.

12. Shorten Course

If the Race Committee displays the "S" code flag for weather reasons, all classes will sail the shortened course. The race committee is prepared to recalculate the adjustments for the shortened course.

13. PROTESTS

The protest and redress procedures for this regatta will utilize basic elements of the new RRS Appendix T, a US Sailing Prescription. Protests shall be communicated to the Race Committee before leaving the race area and must be filed in writing within 2 hours of the last boat finishing. This modifies RRS 61. Protests shall be filed at the GBCA office.

14. SAFETY and WITHDRAWING PROCEDURES

14.1 Attention is called to RRS 4: Decision to Race, "The responsibility for a boat's decision to participate in a race or to continue *racing* is hers alone."

14.2 The Race Committee places high priority on accounting for every yacht participating in a race. It is imperative that any yacht withdrawing from a race makes its best and most persistent efforts to notify other parties of such withdrawal at the earliest opportunity. Withdrawing yachts should make every effort to contact the Race Committee and/or other nearby yachts to communicate the withdrawal via VHF channel 69. . If radio communication is unavailable, call the Race Committee phone number: 281-216-4082 and leave a message. Text messages to this number are also acceptable. Proper reporting of a withdrawal should include; yacht name, sail number and skipper's name.

14.3 Single Handed Regatta – Code flag "Y" **SHALL BE** displayed

14.4 Mixed Doubles Regatta – Code flag "Y" **MAY BE** displayed from the RC Signal boat in accordance with the Racing Rules of Sailing 27.1.

15. TIME LIMIT

None, except we have an après race party scheduled at Cabo Saturday and on the GBCA Lounge Deck Sunday. This modifies RRS 35.

16. SCORING

The Race Committee will score the race with reverse start (pursuit) style race using the performance handicapping racing formula, time on distance, for each yacht, as determined by the Race Committee.

17. Schedule of Events

17.1 A Competitors Briefing for both events will be held at the GBCA office at 0900 Saturday, August 15, 2015.

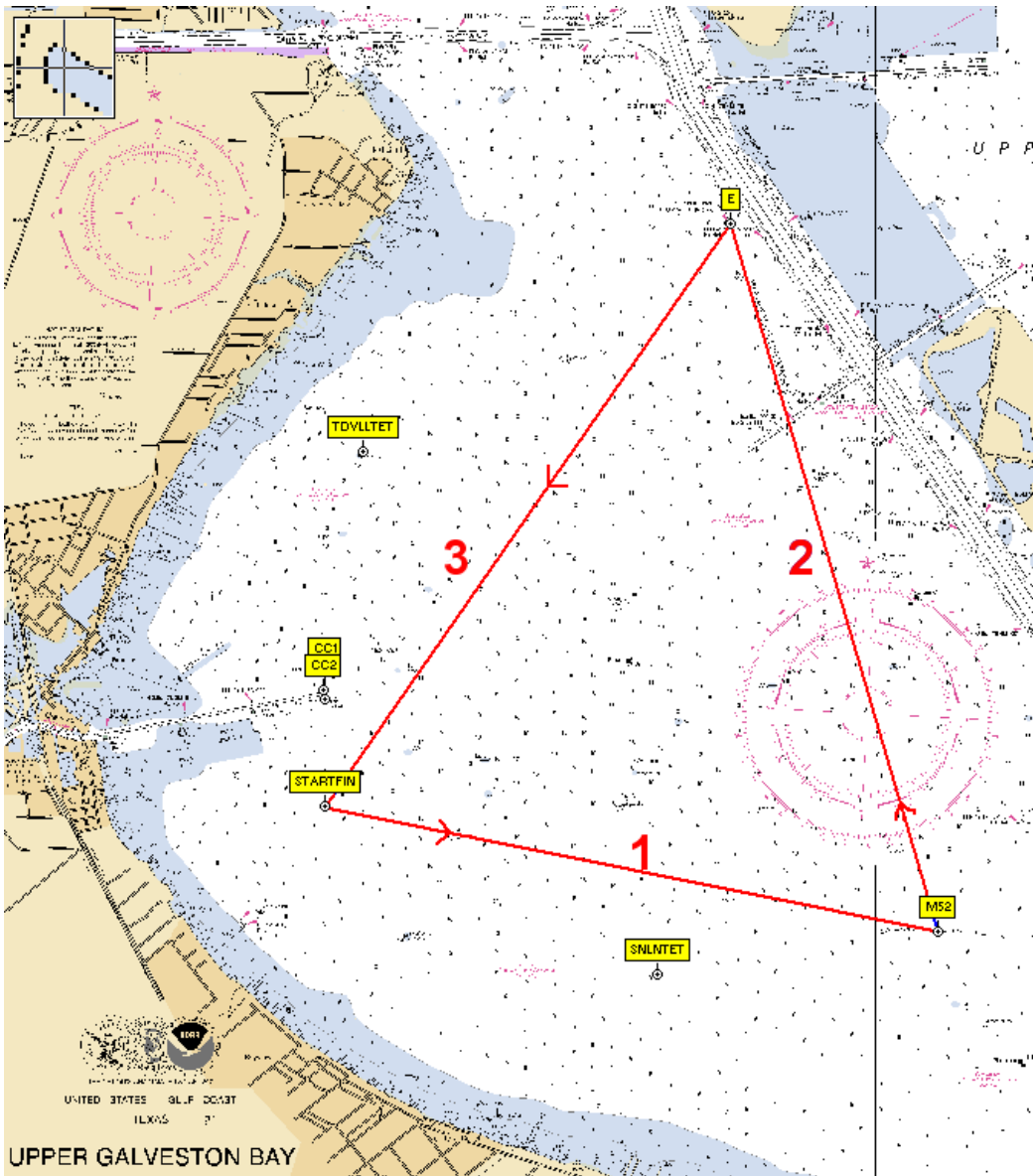
17.2 These are single day regattas, therefore, as many races as practical will be run during each regatta.

Subsequent races for each class will be started as soon as possible after the class has finished the prior race. The warning signal for the first race of the regatta will not be before 1300 hours Saturday and Sunday, August 15 & 16, 2015.

17.3 A Recovery Party and awards presentation, following the Single Hand Regatta, will be held following the conclusion of the last race on Saturday at Cabo's Classic Cafe bar on Clear Lake.

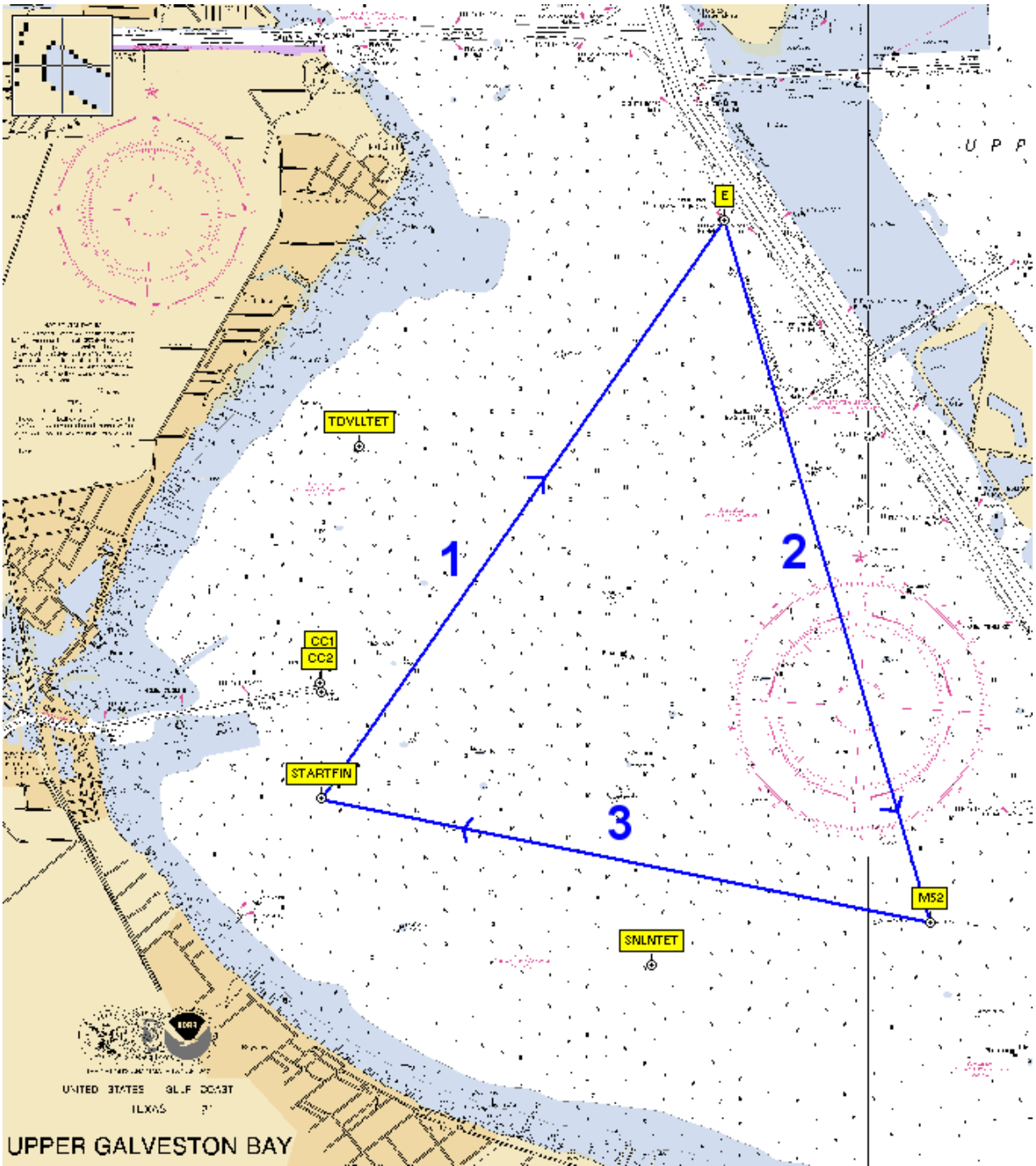
17.4 Refreshments and trophy presentations for the Mixed Doubles Regatta will be on Sunday, August 16, 2015 at the GBCA clubhouse following the conclusion of the last race.

Appendix A - Course 1 "Rum Forward"



Mark	Bearing	Distance	Rounding
Start > M52	99	3.51	P
M52 > E	341	4.13	P
E > Finish	212	3.98	P
Total		11.62	

Appendix A - Course 2 "Rum Reverse"



Mark	Bearing	Distance	Rounding
Start>E	032	3.98 nm	S
E> M52	161	4.13	S
M52> Finish	279	3.51	S
Total		11.62	

Appendix B - Courses 1 and 2 "Rum"

Pursuit Start Sheet For
Galveston Bay Cruising Association
2015 GBCA Single Hand Regatta
COURSES 1 and 2

Start Time: 13:00:00 Distance: 11.62 MAX PHRF: 251

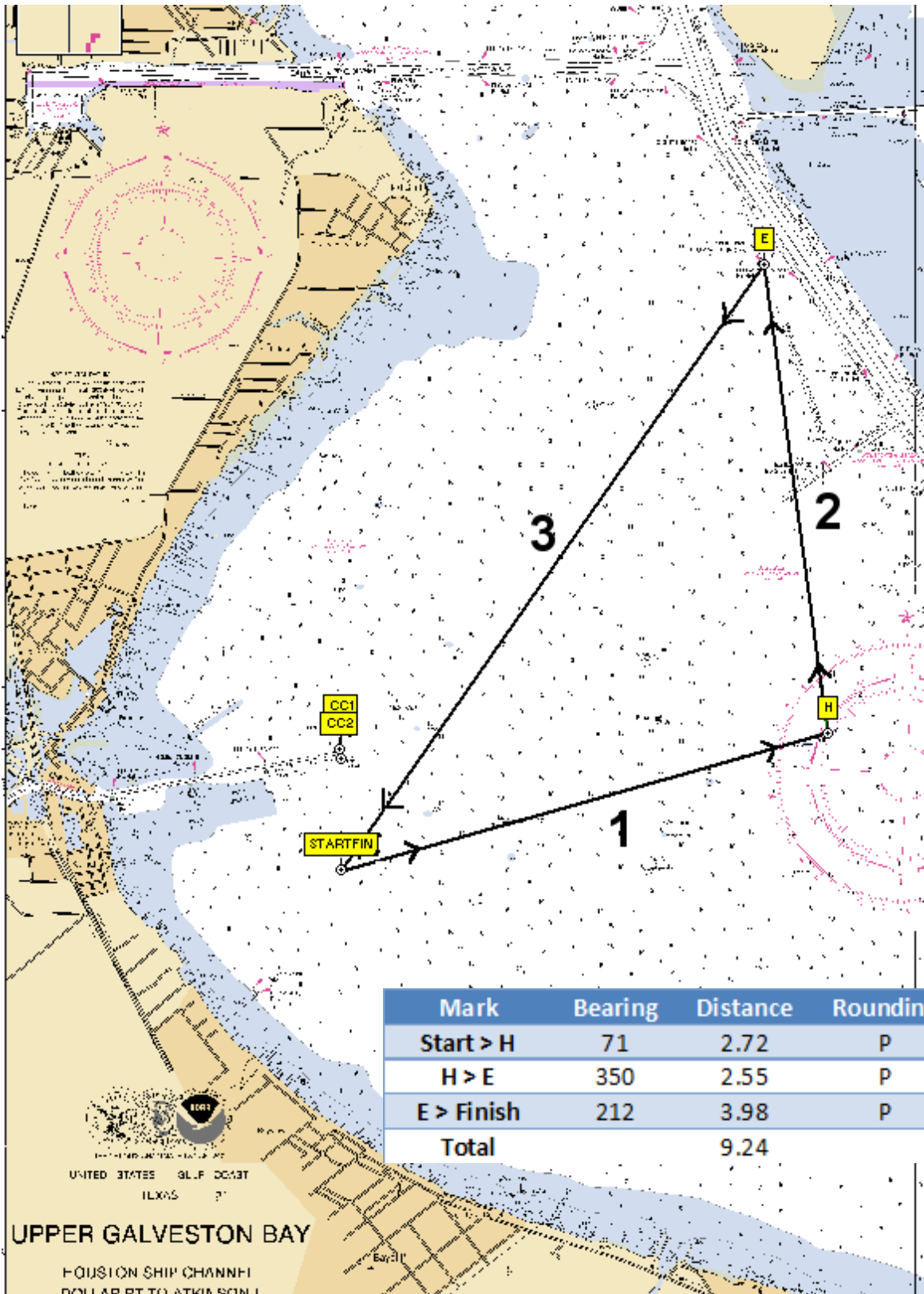
Start	Sail#	Skipper	Boat Name	Class/Fleet	PHRF
13:00:00	235	Richard Dashiell	Ny Tost, Ny Tard	GBCA Cruising Club	251
13:09:41	144	Maarten van Hasselt	Joan III	GBCA Cruising Club	201
13:13:22	1590	Christopher Dees	Slippery When Wet	PHRF Non-Spin	182
13:13:57	114	Rafael Brom	SELAH	GBCA Cruising Club	179
13:14:55	307	Evan Smith	Blackburn Marine Racing	PHRF Spin	174
13:15:53	510	Scott Tuma	Reflection	PHRF Non-Spin	169
13:18:59	747	sanjin Ijubotina	Rogue	PHRF Spin	153
13:19:57	584	Jim Foster	Big D	PHRF Non-Spin	148
13:22:52	23	Chris Alk	Footloose	PHRF Non-Spin	133
13:23:03	40860	Tom Meeh	Tomfoolery II	PHRF Non-Spin	132
13:23:50	0537	Terri Gale	Honey Badger	PHRF Non-Spin	128
13:24:13	53	Chris Haas	SolAire	PHRF Spin	126
13:25:23	283	alberic avisse	Doodah	PHRF Spin	120
13:25:57	1241	Ken Womack	Flying Colors	PHRF Spin	117
13:28:17	28339	Christina Wolfe	Spadefoot	PHRF Spin	105
13:33:31	296	J B Bednar	Stinger	PHRF Non-Spin	78
13:33:31	649	Bill Lakenmacher	Radiance	PHRF Spin	78

Appendix B - Courses 1 and 2 "Rum"
Pursuit Start Sheet For
Galveston Bay Cruising Association
2015 GBCA Mixed Doubles Regatta

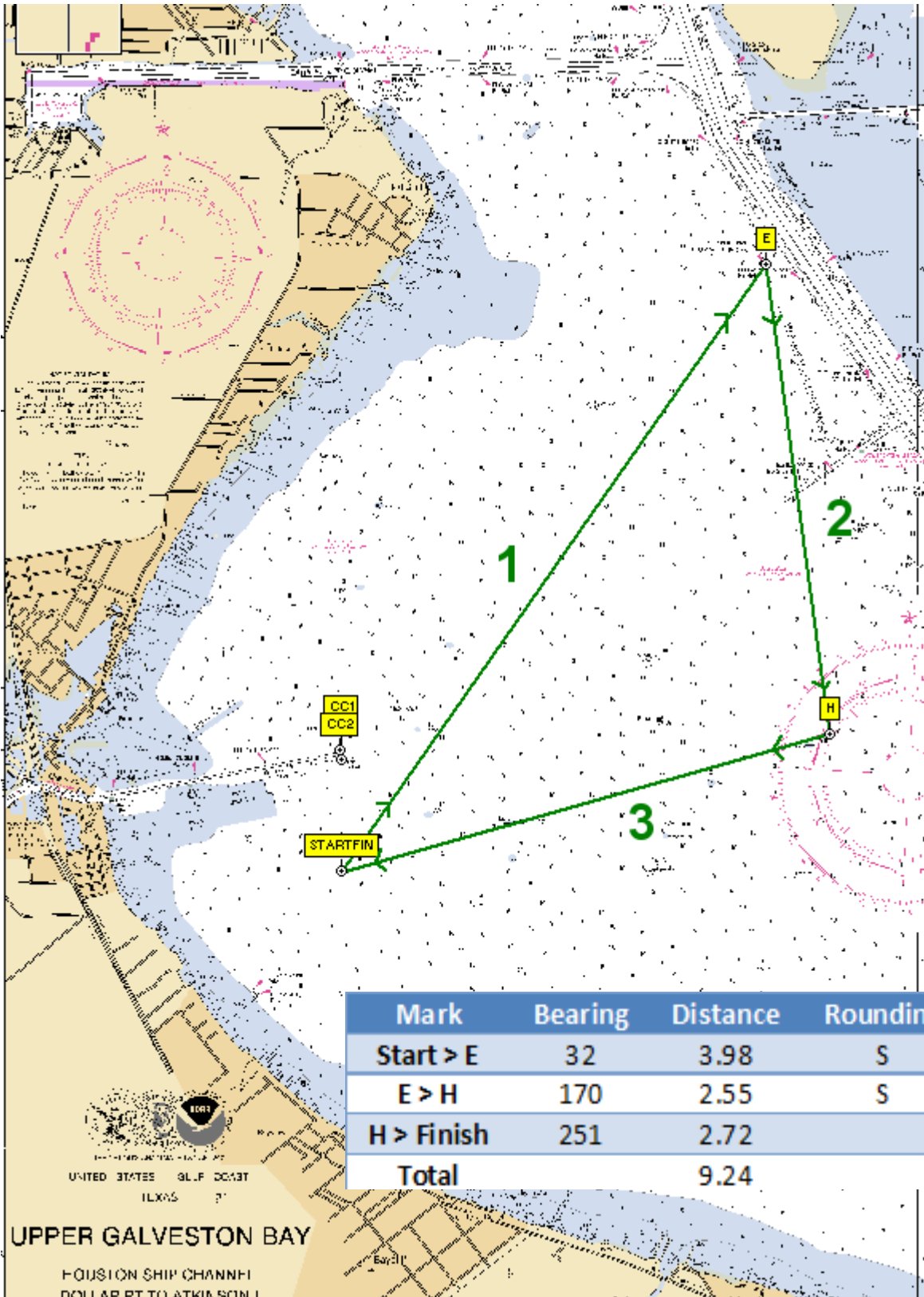
COURSES 1 and 2 Start Time: Distance: **MAX PHRF:**

Start	Sail#	Skipper	Boat Name	Class/Fleet	PHRF
13:00:00	55	Charles Scott	Gemini	GBCA Cruising Club	286
13:06:46	235	Richard Dashiell	Ny Tost, Ny Tard	GBCA Cruising Club	251
13:13:33	none	E Wayne Alderman	Stardust	GBCA Cruising Club	216
13:15:53	133	Ronald Eddleman	Stellar of Course	GBCA Cruising Club	204
13:16:27	144	Maarten van Hasselt	Joan III	GBCA Cruising Club	201
13:16:27	3371	Bill Jenko	Sea Gypsy	GBCA Cruising Club	201
13:18:58	37	Duane/ Kathlyn Bez	Be Easy	PHRF Non-Spin	188
13:18:58	918	Chris/Betsie Morlan	TILT	PHRF Non-Spin	188
13:20:08	1590	Chris / Andrea Dees / Zaité	Slippery When Wet	PHRF Non-Spin	182
13:20:55	40175	John Frederick	Ananda	GBCA Cruising Club	178
13:21:06	303	Mike Golebiowski	Baltic Raider	PHRF Non-Spin	177
13:21:41	723	Rod Nichols Anne Lee	Helms A Lee	PHRF Spin	174
13:23:26	106	David / Karen Atkinson / Penrose	Ol' Blue	PHRF Non-Spin	165
13:29:38	23	Nicole Laster	Footloose	PHRF Non-Spin	133
13:30:36	None	Raul R. Smith	Moonchild II	PHRF Non-Spin	128
13:30:59	53	Chris Haas	SolAire	PHRF Spin	126
13:32:09	0537	Terri / Scott Gale / Tuma	Honey Badger	PHRF Spin	120
13:32:43	1241	Ken Womack	Flying Colors	PHRF Spin	117
13:34:28	77	George Cushing	77	PHRF Spin	108
13:35:03	28339	Christina Wolfe	Spadefoot	PHRF Spin	105
13:38:09	168	Walter Barnett	Osprey	GBCA Cruising Club	89
13:38:32	172	Christopher Born	Non Sequitur	PHRF Non-Spin	87
13:40:17	296	Kevin Bednar	Stinger	PHRF Spin	78
13:40:17	649	Robert Brann	Radiance	PHRF Spin	78

Appendix A - Course 3 "Icicle Forward"



Appendix A - Course 4 "Icicle Reverse"



Appendix B - Course 3 "Icicle" Start Times

Pursuit Start Sheet For
Galveston Bay Cruising Association
2015 GBCA Single Hand Regatta

COURSES 3 and 4

Start Time: 13:00:00 Distance: 9.24 MAX PHRF: 251

Start	Sail#	Skipper	Boat Name	Class/Fleet	PHRF
13:00:00	235	Richard Dashiell	Ny Tost, Ny Tard	GBCA Cruising Club	251
13:07:42	144	Maarten van Hasselt	Joan III	GBCA Cruising Club	201
13:10:37	1590	Christopher Dees	Slippery When Wet	PHRF Non-Spin	182
13:11:05	114	Rafael Brom	SELAH	GBCA Cruising Club	179
13:11:51	307	Evan Smith	Blackburn Marine Racing	PHRF Spin	174
13:12:37	510	Scott Tuma	Reflection	PHRF Non-Spin	169
13:15:05	747	sanjin ljubotina	Rogue	PHRF Spin	153
13:15:51	584	Jim Foster	Big D	PHRF Non-Spin	148
13:18:10	23	Chris Alk	Footloose	PHRF Non-Spin	133
13:18:19	40860	Tom Meeh	Tomfoolery II	PHRF Non-Spin	132
13:18:56	0537	Terri Gale	Honey Badger	PHRF Non-Spin	128
13:19:15	53	Chris Haas	SolAire	PHRF Spin	126
13:20:10	283	alberic avisse	Doodah	PHRF Spin	120
13:20:38	1241	Ken Womack	Flying Colors	PHRF Spin	117
13:22:29	28339	Christina Wolfe	Spadefoot	PHRF Spin	105
13:26:38	296	J B Bednar	Stinger	PHRF Non-Spin	78
13:26:38	649	Bill Lakenmacher	Radiance	PHRF Spin	78

Appendix B - Course 3 "Icicle" Start Times

**Pursuit Start Sheet For
Galveston Bay Cruising Association
2015 GBCA Mixed Doubles Regatta
COURSES 3 and 4**

Start Time: **Distance:** **MAX PHRF:**

Start	Sail#	Skipper	Boat Name	Class/Fleet	PHRF
13:00:00	55	Charles Scott	Gemini	GBCA Cruising Club	286
13:05:24	235	Richard Dashiell	Ny Tost, Ny Tard	GBCA Cruising Club	251
13:10:47	none	E Wayne Alderman	Stardust	GBCA Cruising Club	216
13:12:38	133	Ronald Eddleman	Stellar of Course	GBCA Cruising Club	204
13:13:06	144	Maarten van Hasselt	Joan III	GBCA Cruising Club	201
13:13:06	3371	Bill Jenko	Sea Gypsy	GBCA Cruising Club	201
13:15:06	37	Duane/ Kathlyn Bez	Be Easy	PHRF Non-Spin	188
13:15:06	918	Chris/Betsie Morlan	TILT	PHRF Non-Spin	188
13:16:01	1590	Chris / Andrea Dees / Zaitte	Slippery When Wet	PHRF Non-Spin	182
13:16:38	40175	John Frederick	Ananda	GBCA Cruising Club	178
13:16:48	303	Mike Golebiowski	Baltic Raider	PHRF Non-Spin	177
13:17:15	723	Rod Nichols Anne Lee	Helms A Lee	PHRF Spin	174
13:18:38	106	David / Karen Atkinson / Penrose	Ol' Blue	PHRF Non-Spin	165
13:23:34	23	Nicole Laster	Footloose	PHRF Non-Spin	133
13:24:20	None	Raul R. Smith	Moonchild II	PHRF Non-Spin	128
13:24:39	53	Chris Haas	SolAire	PHRF Spin	126
13:25:34	0537	Terri / Scott Gale / Tuma	Honey Badger	PHRF Spin	120
13:26:02	1241	Ken Womack	Flying Colors	PHRF Spin	117
13:27:25	77	George Cushing	77	PHRF Spin	108
13:27:53	28339	Christina Wolfe	Spadefoot	PHRF Spin	105
13:30:21	168	Walter Barnett	Osprey	GBCA Cruising Club	89
13:30:39	172	Christopher Born	Non Sequitur	PHRF Non-Spin	87
13:32:02	296	Kevin Bednar	Stinger	PHRF Spin	78
13:32:02	649	Robert Brann	Radiance	PHRF Spin	78