

# 2015 Annapolis Labor Day Regatta

## 5-6 September 2015

Organizing Authority: Eastport Yacht Club  
Annapolis, Maryland, USA

Event Website: <http://eastportyc.org/aldr2015>

Hosted by: Annapolis Yacht Club, Eastport Yacht Club, &  
Gibson Island Yacht Squadron

## NOTICE OF RACE

With Amendment No. 1

### 1 RULES

- 1.1 The regatta will be governed by the rules as defined in The Racing Rules of Sailing (RRS).
- 1.2 The US Safety Equipment Requirements as modified by PHRF of the Chesapeake (USSER Chesapeake) shall apply to boats racing under PHRF. PHRF A0, A1, A2, B, and C classes shall comply with Ches Bay (4P) minimum requirements. The PHRF N, Chesapeake Shorthanded Sailing Society (CHESSS), Annapolis Labor Day Regatta (ALDR) Cruising, and Sport Boat classes shall comply with Nearshore (5P & 6P) minimum requirements. See [http://www.phrfchesbay.org/docs/PHRF\\_Equip\\_Regs\\_v2.pdf](http://www.phrfchesbay.org/docs/PHRF_Equip_Regs_v2.pdf).
- 1.3 The ALDR Cruising Class definition is provided in Attachment (A).

### 2 ADVERTISING

Boats may be required to display advertising chosen and supplied by the Organizing Authority.

### 3 ELIGIBILITY

- 3.1 The regatta is open to all boats of the following classes, per the organization described below:
  - 3.1.1 The following classes will race a Government marks course on Saturday, 5 September:

PHRF A0	PHRF A1	PHRF A2	PHRF B	PHRF C	PHRF N
Cal 25	CHESSS	ALDR Cruising			
  - 3.1.2 The following classes will race drop mark races on Saturday, 5 September:

J/70	J/80	J/30	J/35	J/105	Sport Boats
------	------	------	------	-------	-------------
  - 3.1.3 The following classes will race drop mark races on Sunday, 6 September:

PHRF A0	PHRF A1	PHRF A2	PHRF B	PHRF C	PHRF N
J/70	J/80	J/30	J/35	J/105	Cal 25
Sport Boats					
- 3.2 The regatta will host the 1<sup>st</sup> Annual J/80 Chesapeake Bay Championships.
- 3.3 PHRF N competitors may use double headsails.
- 3.4 Other classes with six (6) or more paid entries by the close of registration will be added.

### 4 CLASSIFICATION

There will be no sailor classification requirements beyond those stated in applicable class rules.

### 5 FEES AND ENTRY

- 5.1 The entry fee is \$125.00 for all classes except the CHESSS and ALDR Cruising classes. The entry fee for the CHESSS and ALDR Cruising classes is \$75.00.
- 5.2 Boats with a paid registration by 1700 Friday, 7 August 2015 will receive a \$20.00 discount.
- 5.3 Boats wishing to enter shall register on line at <http://eastportyc.org/aldr2015> by 1300 Tuesday, 1 September 2015.
- 5.4 Registrations made after 1700 Friday, 28 August 2015, will be subject to a \$50.00 late fee.
- 5.5 The entry fee is due at the time of online registration.
- 5.6 The fee includes all racing and all official regatta social functions.
- 5.7 The entry fee is non-refundable.

## 6 SCHEDULE

6.1 The event schedule will be:

Date	Time	
Saturday, 5 September 2015	1100	First Warning Signal of the day for all classes
	1700 - 2030	All-Racers Party at Eastport Yacht Club for families and friends
Sunday, 6 September 2015	1030	First Warning Signal of the day for all classes
	1430	No Warning Signal will be made after this time
	1700-2030	Awards Party at Annapolis Yacht Club Skipjack Room

6.2 One (1) race is scheduled for the CHESSS and ALDR Cruising classes. (Saturday only)

6.3 Four (4) races are scheduled for the PHRF A0, PHRF A1, PHRF A2, PHRF B, PHRF C, PHRF N, and Cal 25 classes, including the Government marks course.

6.3 Six (6) races are scheduled for the J/70, J/80, J/30, J/35, J/105, and Sport Boat classes.

## 7 MEASUREMENT AND INSPECTION

No pre-regatta measurements or inspections will be required.

## 8 SAILING INSTRUCTIONS

Sailing instructions will be posted on the Official Event Website by 1700 on [FriMonday, 231](#) August 2015.

## 9 VENUE

9.1 Figure 1 shows the layout of the regatta venue.

9.2 Figure 2 shows the location of the racing area.

## 10 THE COURSES

10.1 The CHESSS and ALDR Cruising classes will sail only the Government marks course on Saturday. This race will use CBYRA 2015 Standard Racing Marks for Regions [2 & 3](#).

10.2 The classes specified in NOR 3.1.1, other than the CHESSS and ALDR Cruising classes, will sail the Government marks course on Saturday and drop mark courses on Sunday.

10.3 The classes specified in NOR 3.1.2 will sail drop mark courses on both days.

## 11 PENALTY SYSTEM

11.1 Penalties while racing: RRS 44.1, One-Turn and Two-Turns Penalties will apply.

11.2 Penalties after racing: RRS/US Appendix T, Section D (Arbitration) will apply.

## 12 SCORING

12.1 RRS Appendix A4, Low Point System, will apply.

12.2 One (1) race is required to be completed to constitute a series.

12.3 A boat's series score will be the total of her race scores. This changes RRS A2.

## 13 HAUL-OUT RESTRICTIONS

There will be no restrictions on haul-out.

## 14 RADIO COMMUNICATION

The race committee intends to make courtesy broadcasts to competitors on VHF radio. The specific channels will be stated in the sailing instructions.

## 15 PRIZES

15.1 Prizes in each class will be given as follows:

1<sup>st</sup> and 2<sup>nd</sup> Places for six (6) or more entries;

3<sup>rd</sup> Place for seven (7) or more entries.

[15.2 The perpetual City of Annapolis Trophy will be awarded to the boat that wins their class with the smallest points difference between 1<sup>st</sup> and 5<sup>th</sup> places, competing in any class that races both Saturday and Sunday. A keeper award will be presented to the skipper of the boat receiving the perpetual trophy. In the event of a tie, tiebreakers shall be implemented per RRS A8.](#)

15.3 The perpetual SpinSheet Junior Sailing Trophy will be awarded to the boat with the best overall performance in a class that sails on both days. A keeper award will be presented to the skipper of the boat receiving the perpetual trophy. Junior crew must be under 18 years of age on the first day of the regatta. There shall be at least one (1) Junior crewmember on boats that are 25 feet (length overall) or less, and at least two (2) Junior crewmembers on boats that are greater than 25 feet (length overall). Each Junior crewmember must actively participate in sailing the boat (e.g., a helmsman, sail trimmer, foredeck, tactics, etc.). In the event of a tie, the first tiebreaker will be based on the highest finish in any race; the second tiebreaker will be for the boat with the youngest average age of all Junior competitors.

15.42 Additional prizes may be awarded at the discretion of the organizing authority.

**16 DISCLAIMER OF LIABILITY**

Competitors participate in the regatta entirely at their own risk. See RRS 4, Decision to Race. The organizing authority will not accept any liability for material damage or personal injury or death sustained in conjunction with or prior to, during, or after the regatta.

**17 INSURANCE**

Each participating boat shall be insured with valid third-party liability insurance with a minimum cover of \$US 300,000 per event or the equivalent.

**18 FURTHER INFORMATION**

For more information contact:

AYC Regatta Manager: Linda Ambrose, [lambrose@annapolisyc.org](mailto:lambrose@annapolisyc.org), 410.858.4964

AYC Event Chair: Kathy Parks, [kathyparks10@gmail.com](mailto:kathyparks10@gmail.com)

EYC Event Chair: Marsha Malkin, [marsha.malkin@gmail.com](mailto:marsha.malkin@gmail.com)

GIYS Event Chair: Jim Beh, [jamesbeh@yahoo.com](mailto:jamesbeh@yahoo.com)

**Figure 1 - REGATTA VENUE**

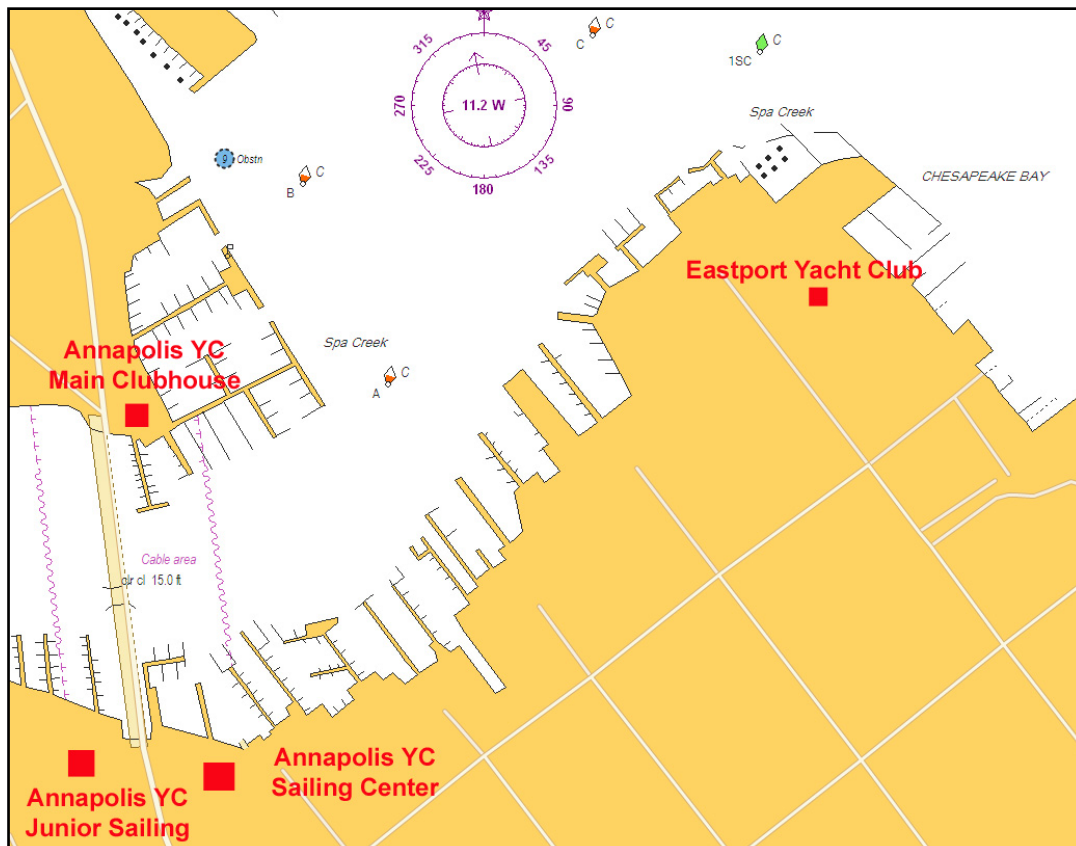
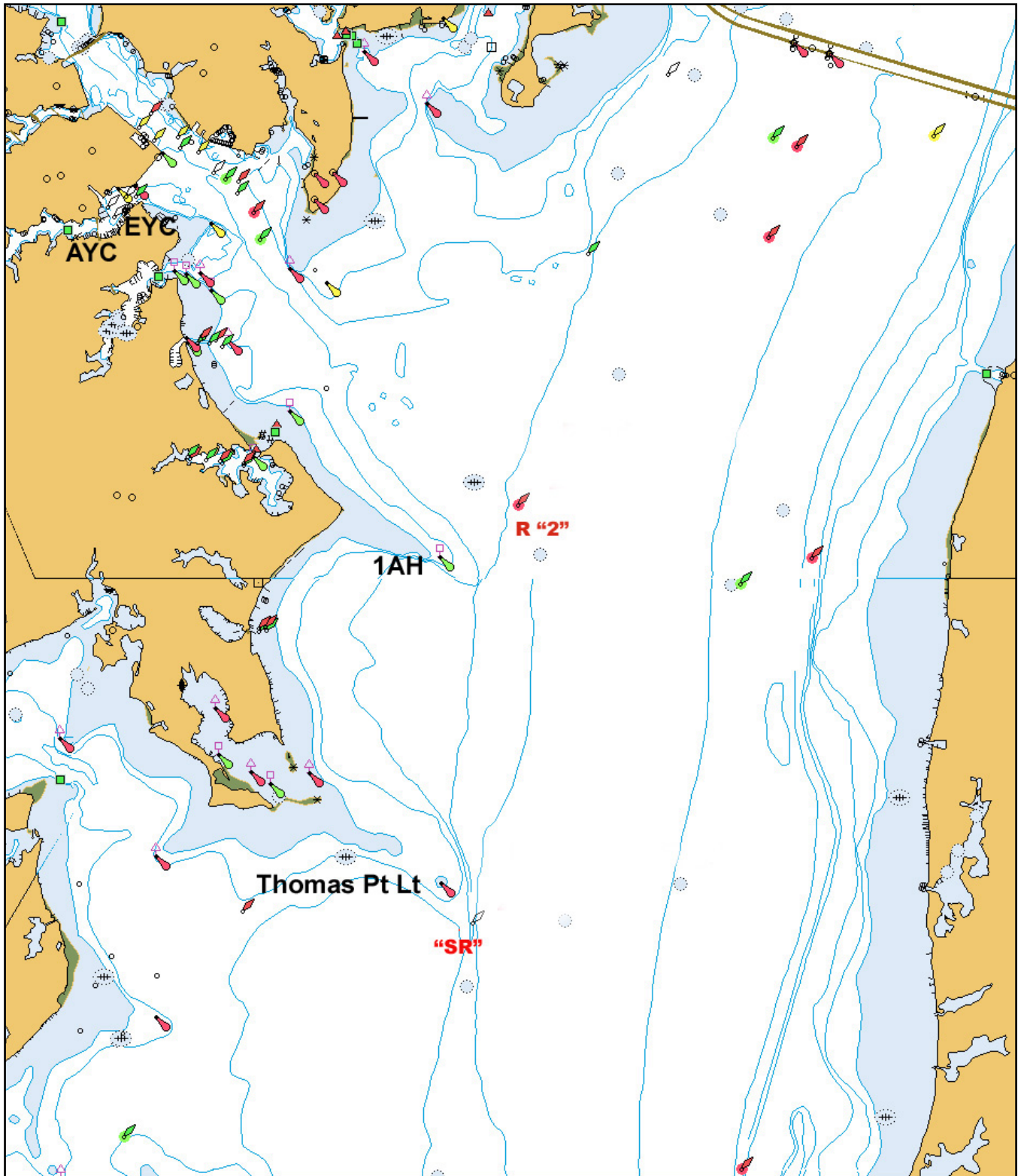


Figure 2 - RACE AREA



# Attachment (A)

## Annapolis Labor Day Regatta Cruising Class Definition

### **ELIGIBILITY**

1. A boat shall have a valid PHRF certificate from PHRF of the Chesapeake. A boat shall be between 28' - 45', waterline length.

2. A boat shall not have competed in a PHRF or one-design event, except as a Cruising Class entrant, within the past two years, excluding the current calendar year. As an example, for a race held in 2015, the boat shall not have competed in a race/regatta in 2014 or 2013, except within the Cruising Class of an event.

### **BOAT CONFIGURATION**

3. Of the sails to be used during the event, one (1) new replacement Dacron sail per year is permitted, inclusive of the current year. For a race held in 2015, that means one (1) Dacron sail may have been purchased in 2015, one (1) in 2014, one (1) in 2013, etc.

4. Of the sails to be used during the event, no advanced laminate replacement sails shall have been purchased within the past three (3) years, excluding the current calendar year. For a race held in 2015, that means no sail on the boat can have a purchase date of 01 January 2012 or later.

5. A boat entered in the event shall race in the "as-delivered" configuration. This means that all equipment and furnishings (cushions, tables, etc.) delivered with the boat are on the boat, in their intended position(s), during the race. A head/porta-potty must be in working order with sufficient fluid to operate the head/porta-potty.

### **SAFETY**

6. A boat entered in the event shall meet all USCG requirements.