

Greater Wildwood Yacht Club
www.greaterwildwoodyachtclub.org
Corinthian Yacht Club of Cape May
Delaware Avenue, Cape May, NJ 08204
www.cyccm.com

2015 – Laser District 10 CHAMPIONSHIP
Radial and 4.7 Rig
August 15-16, 2015

SAILING INSTRUCTIONS

1. RULES

- 1.1 The regatta will be governed by the rules as defined in the Racing Rules of Sailing (RRS) and the International Laser Class Association (ILCA) rules.
- 1.2 The Organizing Authority is the GWYC and CYCCM.
- 1.3 RRS 40 will be deleted and replaced with: “Competitors shall wear personal flotation devices, except briefly while changing clothing or personal equipment. Wet suits and dry suits are not personal flotation devices.” Note that Code Flag “Y” will not be displayed.

2. ELIGIBILITY AND ENTRY

- 2.1 All competitors must meet the eligibility requirements as stated in the Notice of Race and have filed entries in accordance with the Notice of Race.

3. NOTICES TO COMPETITORS

Notices to competitors will be posted on the official notice board(s) located or on the first floor of the CYCCM Clubhouse.

4. CHANGES TO SAILING INSTRUCTIONS

Changes to the sailing instructions made on the first day of the series will be posted within 15 minutes after the end of the skippers’ meeting. If there is no skippers’ meeting, changes to the sailing instructions will be posted by 1000, except that any change to the schedule of races will be posted by 2000 on the day before it will take effect. The race committee reserves the option to change the colors or shapes of the marks on the race course.

5. SIGNALS MADE ASHORE

- 5.1 Signals made ashore will be displayed on a flagpole outside the clubhouse.
- 5.2 When flag AP is displayed ashore, 1 minute is replaced with ‘not less than **60 minutes**’ in race signal AP. This changes RRS Race Signals.
- 5.3 Posting of Official notices will be indicated by code flag “L”

6. SCHEDULE OF RACES

- 6.1 **Saturday, August 15**
- | | |
|----------|--|
| 800-0945 | Check-In, Registration and Continental Breakfast |
| 1000 | Skippers Meeting |
| 1030 | Harbor gun |
| 1130 | First warning signal, races to follow |

Sunday, August 16

0900-1000	Continental Breakfast
1030	Harbor Gun
1130	1 st warning signal, races to follow

Awards following racing.

- 6.2 No race shall start after **1530** on Sunday. Awards will follow ASAP after the last race.
- 6.3 Eight (8) races are scheduled, of which a minimum of three (3) races must be completed to constitute a regatta. The Race Committee may run up to five (5) races on Saturday August 15.

7. RACING AREA

The regatta will be sailed in the ocean (conditions permitting) off of Cape May, New Jersey. The primary racing area will be 0.5 to 1 mile north of the inlet jetty, as reflected in Attachment "A". Alternatively, an off shore area to the south of the jetty may also be used. Inshore racing shall be held in Cape May Harbor.

Class Flags:

Class

Laser Radial)	Signal Flag 1 (pennant with white field and red dot)
Laser 4.7	Signal Flag 2 (pennant with blue field and white dot)

8. THE COURSE

- 8.1 The diagram on Attachment "B" shows the course diagrams, including the approximate angle between legs, the order in which marks are to be rounded, and the side on which each rounding mark is to be left.
- 8.2 The approximate compass bearing from the starting line to the windward mark will be displayed from the Race Committee signal boat before the warning signal.

9. MARKS

- 9.1 The Windward and Leeward marks will be orange tetrahedrons. The offset mark will be a smaller orange tetrahedron.
- 9.2 Change course marks as provided in instruction 11 will be a yellow tetrahedrons.
- 9.3 If a gate mark is missing or not used, the remaining mark shall be rounded to port.

10. THE START

- 10.1 Races will be started under RRS 26
- 10.2 The starting line will be between a staff displaying an orange flag on the race committee signal boat at the starboard end and the course and the staff on the race committee pin boat. The pin boat may be substituted with an yellow ball.
- 10.3 The starting order for the first race each day will be: Radials (Fleet 1) followed by 4.7 Fleet (Fleet 2). The order may change in subsequent races. Prior to beginning the start sequence the Race Committee Signal Boat shall make repeated sound signals and as a courtesy shall hail the course. All boats are responsible to check the course boards on the RC Signal boat.
- 10.4 Check-in: On each day of racing, before the warning signal of the first race to start, all boats shall sail past the stern of the race committee CHECK IN boat which will be displaying code flag "L" and hail her sail number, which hail will be acknowledged by the race committee on the CHECK IN BOAT. The race committee Signal Boat will not accept check ins. A boat failing to check in with the CHECK IN BOAT will be notified of a breach of the rules of the rules and may receive a 20% penalty in the first race in which the boat competes, calculated in accordance with RRS 44.3(c). This changes RRS 63.1 and RRS A4.
- 10.5 A boat starting later than 5 **minutes** after her starting signal will be scored **Did Not Start**. This changes RRS63.1 and RRS Appendix A4 and A5.
- 10.6 **RECALLS:** It is the responsibility of the boat's skipper to start properly. As a courtesy the Race Committee may attempt to hail the sail numbers of OCS boats. This changes Rule 29.1. The failure of any boat to hear her hail, or the timing and order of such hails shall not be grounds for granting redress. This changes RRS 41 and 62.1.
- 10.7 Contestants not starting in a subsequent race shall notify the race committee of such intent.

11. CHANGE OF THE NEXT LEG OF THE COURSE AND SHORTEN COURSE

To change the next leg of the course the race committee will lay a new mark and signal in accordance with RRS33 and remove the original mark as soon as practicable. When in a subsequent change a new mark is replaced, it will be replaced by an original mark.

Courses will be shortened according to RRS 32.2

12. THE FINISH

- 12.1 The finishing line will be between a staff displaying an orange flag on a race committee boat and a round yellow mark. or boat with orange flag. For downwind finishes the finish line will be to starboard of the committee boat.
- 12.2 Check-out: A boat which does not finish or retires from a race shall notify the race committee before leaving the course area or if that is impossible, immediately after arriving ashore.

13. TIME LIMIT

- 13.1 Finish Time limit is ninety (**90**) **minutes**.
- 13.2 If no boat has passed Mark 1 within forty (**40**) **minutes** of her class start, the race will be abandoned.
- 13.3 Boats failing to finish within fifteen (**15**) **minutes** after the first boat sails the course and finishes will be scored as "Time Limit Expired" (TLE) without a hearing. TLE placings will be scored two points more than the number of finishers, however no boat will receive a score worse than the number of points awarded a DNF. This changes RRS 35, 63.1 and RRS Appendix A4 and A5 and A11.

14. PROTESTS AND REQUESTS FOR REDRESS

- 14.1 RRS 61.1a is modified in that a boat intending to protest shall notify and receive acknowledgement from the race committee at the finish line immediately after finishing, giving the name and number of the boat being protested. Boats which do not finish shall report their intent to protest to any race committee boat at the first possible opportunity.
- 14.2 Protest forms are available at the registration desk. Protests shall be delivered there within the protest time limit.

- 14.3 The time limit for filing a protest is thirty **(30) minutes** after the official docking of the race committee finish boat. The same time limit applies to protests by the Race Committee and Protest Committee about incidents they observe and to requests for redress. This changes RRS 61.3 and 62.2
- 14.4 The race committee finish boat will post its official arrival time on the notice board and hoist code flag “B” from the Club flag pole during the protest filing period. Code flag “B” will be lowered with one sound signal at the protest time limit. Notices will be posted within **fifteen (15) minutes** of the protest time limit to inform competitors as to the time and place of protest hearings of which they are parties or named. The location of protest hearings will be posted on the notice board.
- 14.5 Notices of protests by the race committee or protest committee will be posted to inform boats under RRS 61.1(b)
- 14.6 RRS 44.1 is changed by adding “A boat breaking a rule of Part 2 of the RRS may take a penalty any time after the incident and before the start of a protest hearing by taking a 40% Scoring Penalty as calculated in RRS 44.3(c).
- 14.7 The penalties for breaking SI 1.3 and SI 18 may be less than disqualification if the protest committee so decides.
- 14.8 On the last day of the regatta, a request for reopening a hearing shall be delivered:
Within the protest time limit if the party requesting reopening was informed of the decision on the previous day;
No later than 30 minutes after the party requesting reopening was informed of the decision on that day. This changes RRS66.
- 14.9 On the last scheduled day of racing, a request for redress based on the Protest Committee’s decision shall be delivered no later than 30 minutes after that decision has been posted. This changes RRS 62.2

15. SCORING

- 15.1 The Low Point Scoring System, Appendix A2, will be used except as modified below.
- 15.2 There will be one discard when five or more races are completed.

- 16. DISCLAIMER OF LIABILITY** – Competitors participate in the regatta at their own risk. See RRS 4, Decision to Race. The organizing authority will not accept any liability for material damage or personal injury or death sustained in conjunction with or prior to, during or after the regatta.

- 17. RESPONSIBILITY** – The responsibility of the Race Committee is to provide a start and to record times and/or positions at the finish. The decision to start, continue or retire is the responsibility of the contestant.

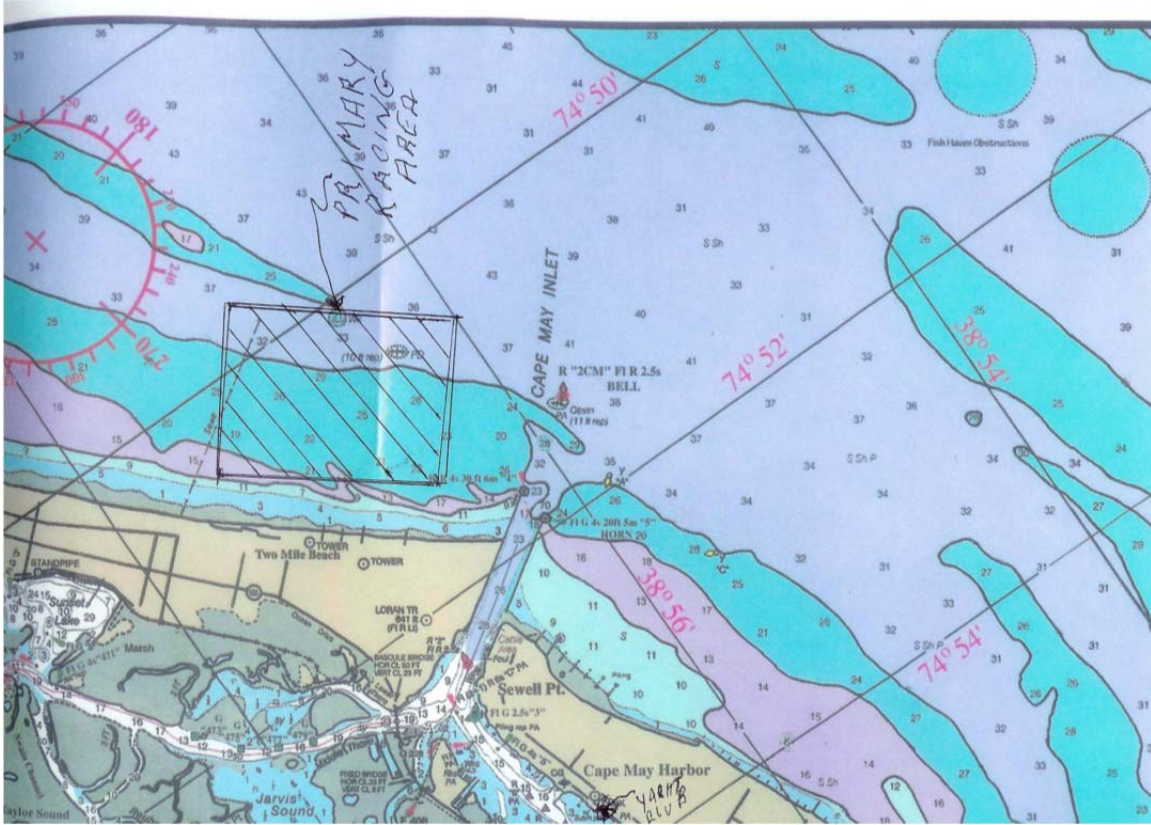
18. Trash disposal

- 18.1 Boats shall not put trash in the water

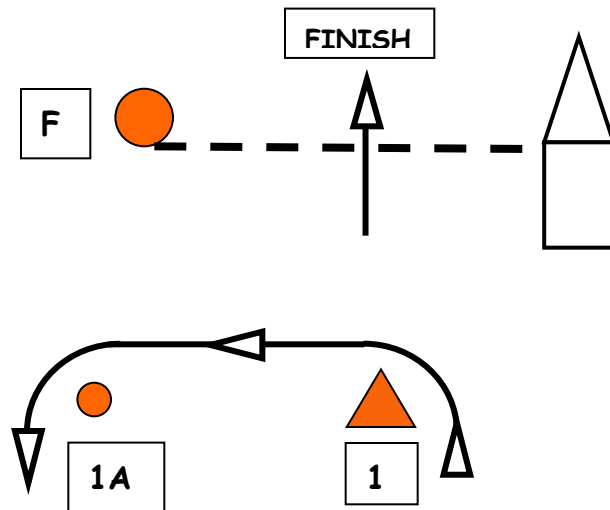
19 Prizes

- 19.1 Prizes will be awarded as described in the Notice of Race.

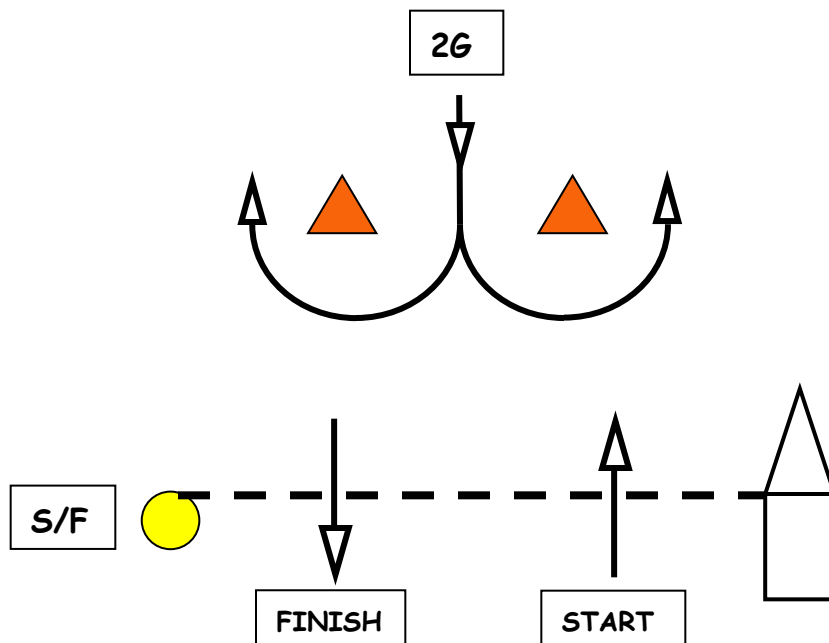
ATTACHMENT A



WINDWARD-LEEWARD COURSE DIAGRAM



NOT TO SCALE



Even Number courses finish down wind (W4 & W6). Odd Number courses finish upwind (W3 & W5)

Example: COURSE W4: START-1(port)-1A(port)-2G-1(port)-1A(port)- FINISH(downwind)

Example: COURSE W3: START-1(port)-1A(port)-2G-FINISH(upwind)

Note Start finish Pin end may be RIB boat with orange flag

Off Set and Leeward Gate may or may not be used.