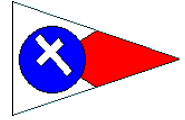


# SANTA CRUZ YACHT CLUB



## 2015 FALL SCORE / DOUBLE HANDED SERIES

**AUGUST 23, SEPTEMBER 27 AND OCTOBER 25 OF 2015**

### SAILING INSTRUCTIONS

244 Fourth Avenue, Santa Cruz, CA 95062 - (831) 425-0690 - regatta@scyc.org

#### 1. RULES

- 1.1. This series will be governed by the rules as defined in the *Racing Rules of Sailing*.
- 1.2. Rule 40 is changed to require competitors wear a personal flotation device while racing, except briefly while changing or adjusting clothing or personal equipment. Flag Y will not be displayed.
- 1.3. Rule 55 is changed by adding the following sentence to the rule: 'However, discarding biodegradable sail stops when setting a sail will not be considered a breach of rule 55.'

#### 2. Notice To Competitors

- 2.1. Notices to Competitors will be posted on the Official Notice Board and may be posted on-line.
- 2.2. The SCYC Official Notice Board is located in the northeast window of the Clubhouse, upper level.
- 2.3. On the water, the Race Committee may use VHF channel 68 for communication.

#### 3. Changes to Sailing Instructions

- 3.1. Any change to these sailing instructions will be posted ashore before 1100 on the day it will take effect, except any change to the schedule of races will be posted by 2000 on the day before it will take effect.

#### 4. Signals Made Ashore

- 4.1. Signals made ashore will be displayed from the SCYC Clubhouse Flagpole.
- 4.2. When flag AP is displayed ashore, '1 minute' is replaced with 'not less than 60 minutes' in race signals AP.

#### 5. Schedule of Races

- 5.1. Dates of racing and number of races for all classes:
 

|                    |   |
|--------------------|---|
| August 23, 2015    | One Race Starting Near Moss Landing           |
| September 27, 2015 | Two Races Starting Near Santa Cruz Start Mark |
| October 25, 2015   | Two Races Starting Near Santa Cruz Start Mark |
- 5.2. The scheduled time of the **August 23 race warning signal is 1255.**
- 5.3. The scheduled time of the warning signal for the first race on September 27 and October 25 is 1225.

#### 6. Class Flags

| Class         | PHRF Rating      | Class Flag |
|---------------|------------------|------------|
| PHRF-A        | 86 or less       | F          |
| PHRF-B        | Greater than 86  | E          |
| Double Handed | All ratings      | D          |
| Jib & Main A  | 181 or less      | K          |
| Jib & Main B  | Greater than 181 | J          |

#### 7. Racing Area

- 7.1. The racing area will be between Davenport and Moss Landing and extending up to ten nautical miles offshore.
- 7.2. On August 23 all classes will start in Moss Landing and Race to a Finish off Santa Cruz
- 7.3. On September 27 and October 25 all classes will Start and Finish near Santa Cruz.

#### 8. The Courses

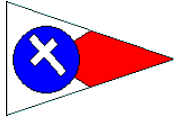
- 8.1. Attachment A shows the courses, including the approximate position of the marks, the order in which marks are to be passed and the side on which each mark is to be left.
- 8.2. Charts (not for use for navigation) are provided in Attachment B to show the relative positions of the marks.
- 8.3. The course will be indicated by the display of a number pennant(s) corresponding to the course number.

#### 9. Marks

- 9.1. Attachment A describes the start and finishing lines and rounding marks.
- 9.2. If a fixed mark is missing, the race committee will attempt to replace it with an inflatable mark at approximately the same location. If no replacement mark is in place, the race shall be abandoned.
- 9.3. If the signal boat or start/finish mark is not on station, it may be replaced by a red ball buoy.

#### 10. The Start

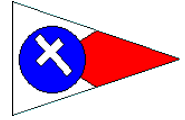
- 10.1. The starting line for Moss Landing started races will be between mark ML7 and a temporary buoy approximately 550 yards to the SSW and roughly perpendicular to ML5/Santa Cruz Wharf



## SANTA CRUZ YACHT CLUB

### 2015 FALL SCORE / DOUBLE HANDED SERIES

AUGUST 23, SEPTEMBER 27 AND OCTOBER 25 OF 2015



### SAILING INSTRUCTIONS

244 Fourth Avenue, Santa Cruz, CA 95062 - (831) 425-0690 - regatta@scyc.org

10.2. The starting line for Santa Cruz started races will be between mark S (Start Mark) and an orange flag displayed from a staff aboard the signal boat

10.3. Between a boat's preparatory signal and her start, she shall not hoist any part of her spinnaker higher than the main boom gooseneck.

10.4. Boats who are identified On Course Side at the start may be hailed on VHF channel 68. Failure to make a broadcast, the time or contents of a broadcast will not be grounds for a request for redress. A hail shall not be considered outside assistance. This changes rules 41 and 62.1(a).

#### 11. The Finish

11.1. The finishing line for Moss Landing started races will be between Government Buoy and a blue signal flag displayed across from Stagnaros Bros. Restaurant near the Southeastern end of Santa Cruz Municipal Wharf

11.2. The finishing line for Santa Cruz based races will be between mark S (Start Mark) and a blue signal flag displayed from a staff aboard the signal boat.

11.3. If the race committee is absent when a boat finishes, she should report her finishing time and her position in relation to nearby boat to the race committee at the first reasonable opportunity.

#### 12. Penalty System

12.1. Rule 44.1 is changed so that the Two-Turns Penalty is replaced by the One-Turn Penalty.

#### 13. Protests and Requests for Redress

13.1. Protest Forms are available at the SCYC Regatta Shed and Clubhouse. Protests and requests for redress or reopening shall be delivered to the Clubhouse bar within the appropriate time limit.

13.2. For each class, the protest time limit is sixty (60) minutes after the signal boat has arrived at her berth in Santa Cruz Harbor, or the Race Committee concludes recording finishes on Santa Cruz Municipal Wharf. The protest filing time limit will be posted.

13.3. Notices will be posted no later than thirty (30) minutes after the protest filing time limit to inform competitors of hearings in which they are parties or named as witnesses.

#### 14. Scoring

14.1. Three (3) races are required to constitute a series.

14.2. When fewer than five races have been completed, a boat's score will be the total of her race scores.

14.3. When five or more races have been completed, a boat's score will be the total of her race scores excluding her worst score

#### 15. Safety Regulations

15.1. Check In. Prior to the display of the first warning signal for the day, all competitors must check in.

15.2. Check in for the Moss Landing started race is accomplished by sailing past ML7 starboard tack while calling the race committee on VHF channel 68 to announce their arrival in the racing area.

15.3. Check in for Santa Cruz Started Races is accomplished by sailing past the stern of the signal boat on starboard tack while calling the race committee on VHF channel 68 to announce their arrival in the racing area.

15.4. A boat has not checked in until she has heard her sail number repeated back over VHF by the race committee.

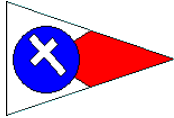
15.5. A boat that retires from a race shall notify the race committee as soon as possible.

#### 16. Prizes

16.1. Prizes will be awarded at the discretion of the organizing authority on the basis of participation.

16.2. There will be an awards ceremony at the SCYC clubhouse for daily prizes immediately after racing and a final awards ceremony on June 28th following racing.

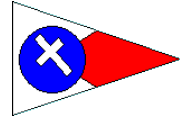
16.3. The winner of any class having three or more boats entered will be eligible for the Cliff McNamara Champion of Champions regatta.



# SANTA CRUZ YACHT CLUB

## 2015 FALL SCORE / DOUBLE HANDED SERIES

AUGUST 23, SEPTEMBER 27 AND OCTOBER 25 OF 2015



### SAILING INSTRUCTIONS

244 Fourth Avenue, Santa Cruz, CA 95062 - (831) 425-0690 - regatta@scyc.org  
All marks followed by a "(s)" in the Mark Rounding Order tables below shall be rounded to **STARBOARD**. All other marks shall be rounded to **PORT**.

#### Courses for Moss Landing Started Race:

| Course | Mark Rounding Order  | Length |
|--------|--|--------|
| 0      | Moss Landing Start Natural Bridges (s) SC7 Santa Cruz Municipal Wharf Finish | 17.71  |
| 1      | Moss Landing Start Wharf Mark (s) SC Municipal Wharf Finish                  | 13.87  |

**Mark Positions & Descriptions for the Moss Landing Started Race:** Start line between ML7 and Elkhorn Temporary Start Buoy. Finish Line between Santa Cruz Municipal Wharf and Government Buoy. Each of these are not *rounding marks*. Natural Bridges, SC7, and Wharf marks below are *rounding marks*

|                          |                                    |   |
|--------------------------|------------------------------------|---|
| Moss Landing Start - ML7 | 36° 48.90'N – 121° 48.192 'W       | Yellow can marked "ML7"   |
| Elkhorn Temp Start Buoy  | Approximately 550 Yards SSW of ML7 | Unmarked yellow can   |
| Natural Bridges          | 36°56.58'N – 122°03.67'W           | Unmarked yellow ball  |
| SC7                      | 36°56.30'N – 122°01.00'W           | Yellow cylinder marked "SC7"  |
| Wharf Mark               | 36°56.87'N – 122°01.24'W           | Unmarked yellow ball  |
| SC Municipal Wharf       | 36°57.47' - 122°01.04'W            | Blue Finish Flag flown from the wharf across from Stagnaro Bros. Restaurant on southeastern end of the piling structure extending from the Santa Cruz shoreline |
| Government               | 36°57.47'N – 122°00.72'W           | Large white metal ball marked "CG"  |

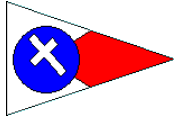
#### Courses for Santa Cruz Started Races:

##### Courses for *PHRF A* and *PHRF B* Classes

| Course | Mark Rounding Order  | Length |
|--------|--|--------|
| 0      | Start -> Wharf -> Black Pt. -> Wharf -> Finish   | 5.82   |
| 1      | Start -> Wharf -> Black Pt. -> Wharf -> Black Pt. -> Wharf -> Finish                             | 9.03   |
| 2      | Start -> Wharf -> SC3 -> Wharf -> SC3 -> Wharf -> Finish   | 13.10  |
| 3      | Start -> Natural Bridges -> Black Pt. -> Wharf -> Finish   | 9.75   |
| 4      | Start -> Natural Bridges -> SC3 -> SC7 (s) -> Government (s) -> Black Pt. (s) -> Wharf -> Finish | 15.29  |
| 5      | Start -> Needle Rock -> La Selva Beach -> Finish   | 20.29  |
| 6      | Start -> Black Pt. -> Wharf -> Black Pt. -> Wharf -> Finish                                      | 6.40   |
| 7      | Start -> SC3 -> Wharf -> SC3 -> Wharf -> Finish  | 10.59  |
| 8      | Start -> Mile (s) -> Government -> SC7 -> Finish   | 4.43   |
| 9      | Start -> SC7 -> SC3 -> Black Pt. -> SC7 -> Black Pt. -> SC7 -> Finish                            | 10.8   |
| 10     | Start -> Government -> SC3 -> Government -> SC3 -> Government -> Finish                          | 11.44  |

##### Courses for *Double Handed, Jib & Main A* and *Jib & Main B* Classes

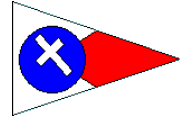
| Course | Mark Rounding Order   | Length |
|--------|---|--------|
| 0      | Start -> Wharf -> Finish  | 2.63   |
| 1      | Start -> Wharf -> Black Pt. -> Wharf -> Finish  | 5.82   |
| 2      | Start -> Wharf -> SC3 -> Wharf -> Finish  | 7.86   |
| 3      | Start -> Wharf -> Black Pt. -> Wharf -> SC7 -> Government (s) -> Black Pt. (s) -> Wharf -> Finish | 10.01  |
| 4      | Start -> Natural Bridges -> Black Pt. -> Wharf -> Finish  | 9.75   |
| 5      | Start -> Natural Bridges -> SC3 -> Wharf -> Finish  | 11.74  |



# SANTA CRUZ YACHT CLUB

## 2015 FALL SCORE / DOUBLE HANDED SERIES

AUGUST 23, SEPTEMBER 27 AND OCTOBER 25 OF 2015



### SAILING INSTRUCTIONS

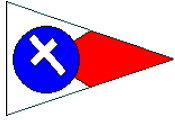
244 Fourth Avenue, Santa Cruz, CA 95062 - (831) 425-0690 - regatta@scyc.org

|    |  |      |
|----|--|------|
| 6  | Start -> Black Pt. -> Wharf -> Finish                  | 3.20 |
| 7  | Start -> SC3 -> Black Pt. -> Government -> Finish      | 3.85 |
| 8  | Start -> Mile Buoy (s) -> Government-> SC7 -> Finish   | 4.43 |
| 9  | Start -> SC7 -> Mile Buoy-> Black Pt. -> SC7 -> Finish | 5.77 |
| 10 | Start -> Government -> SC3 -> Government -> Finish     | 6.68 |

**Mark Positions & Descriptions:** All marks below are *rounding marks* except mark Start.

| Mark Name                | Mark Location            | Mark Description                           |
|--------------------------|--------------------------|--|
| Black Pt.                | 36°57.22'N – 121°59.29'W | Unmarked yellow ball                       |
| Capitola                 | 36°57.86'N – 121°56.60'W | Rectangular yellow float (aka: Sponge Bob) |
| Government               | 36°57.47'N – 122°00.72'W | Large white metal ball marked "CG"         |
| La Selva Beach           | 36°56.39'N – 121°53.56'W | Yellow inflatable tetrahedron              |
| Mile Buoy                | 36°56.35'N – 122°00.56'W | Large RW "SC" WHISTLE buoy                 |
| Needle Rock              | 36°56.70'N – 122°06.20'W | Yellow inflatable Tetrahedron              |
| Natural Bridges          | 36°56.58'N – 122°03.67'W | Unmarked yellow ball                       |
| SC3                      | 36°56.50'N – 121°58.00'W | Yellow cylinder marked "SC3"               |
| SC6                      | 36°55.00'N – 122°02.00'W | Yellow cylinder marked "SC6"               |
| SC7                      | 36°56.30'N – 122°01.00'W | Yellow cylinder marked "SC7"               |
| Start/Finish or Mark "S" | 36°57.09'N – 121°59.62'W | Unmarked yellow ball                       |
| Wharf Mark               | 36°56.87'N – 122°01.24'W | Unmarked yellow ball                       |

**ATTACHMENT B - SCORE RACING AREA (CHARTS ARE NOT TO BE USE FOR NAVIGATION)**



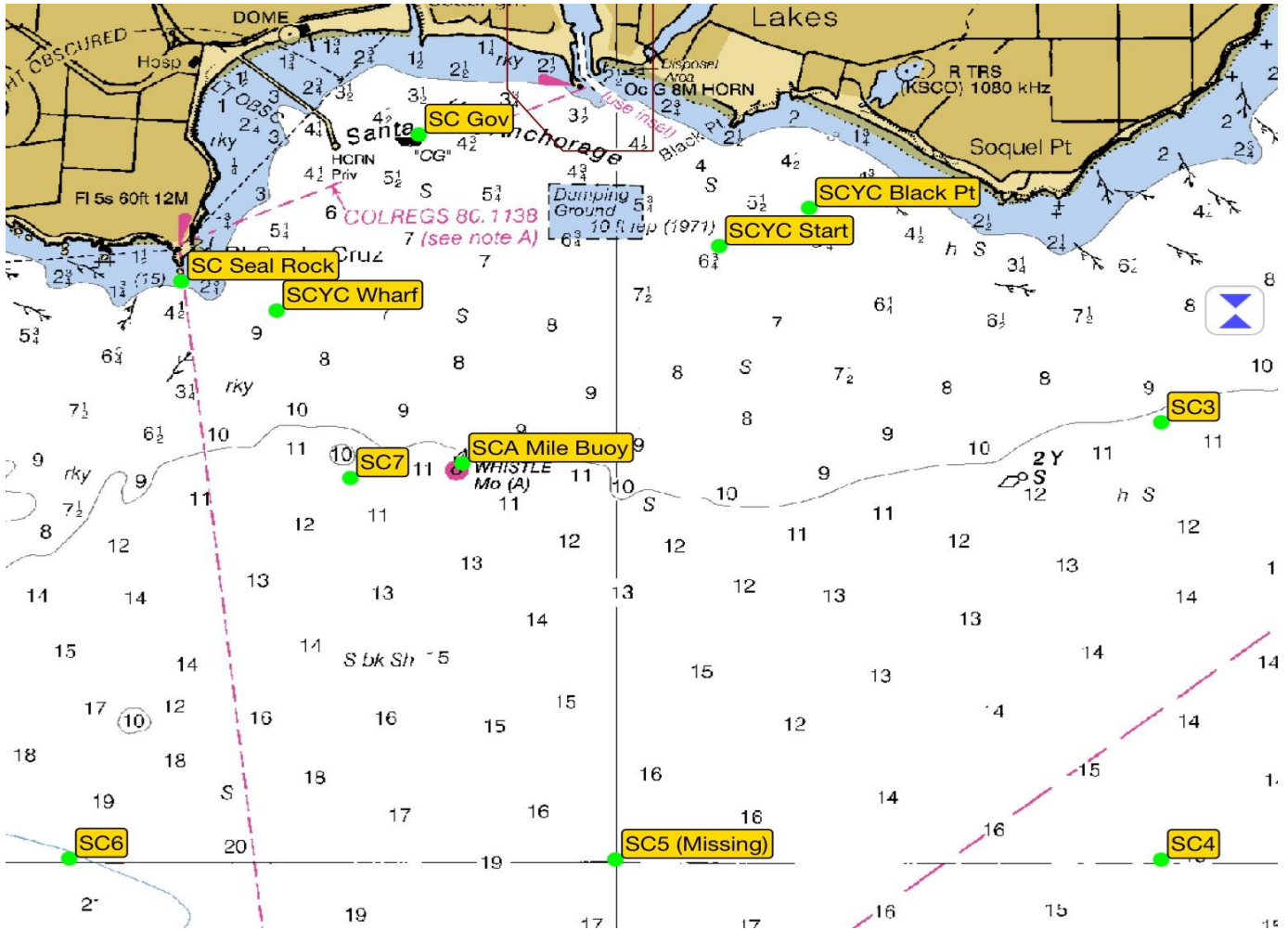
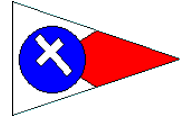
# SANTA CRUZ YACHT CLUB

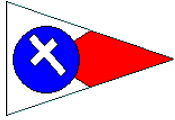
## 2015 FALL SCORE / DOUBLE HANDED SERIES

AUGUST 23, SEPTEMBER 27 AND OCTOBER 25 OF 2015

### SAILING INSTRUCTIONS

244 Fourth Avenue, Santa Cruz, CA 95062 - (831) 425-0690 - regatta@scyc.org





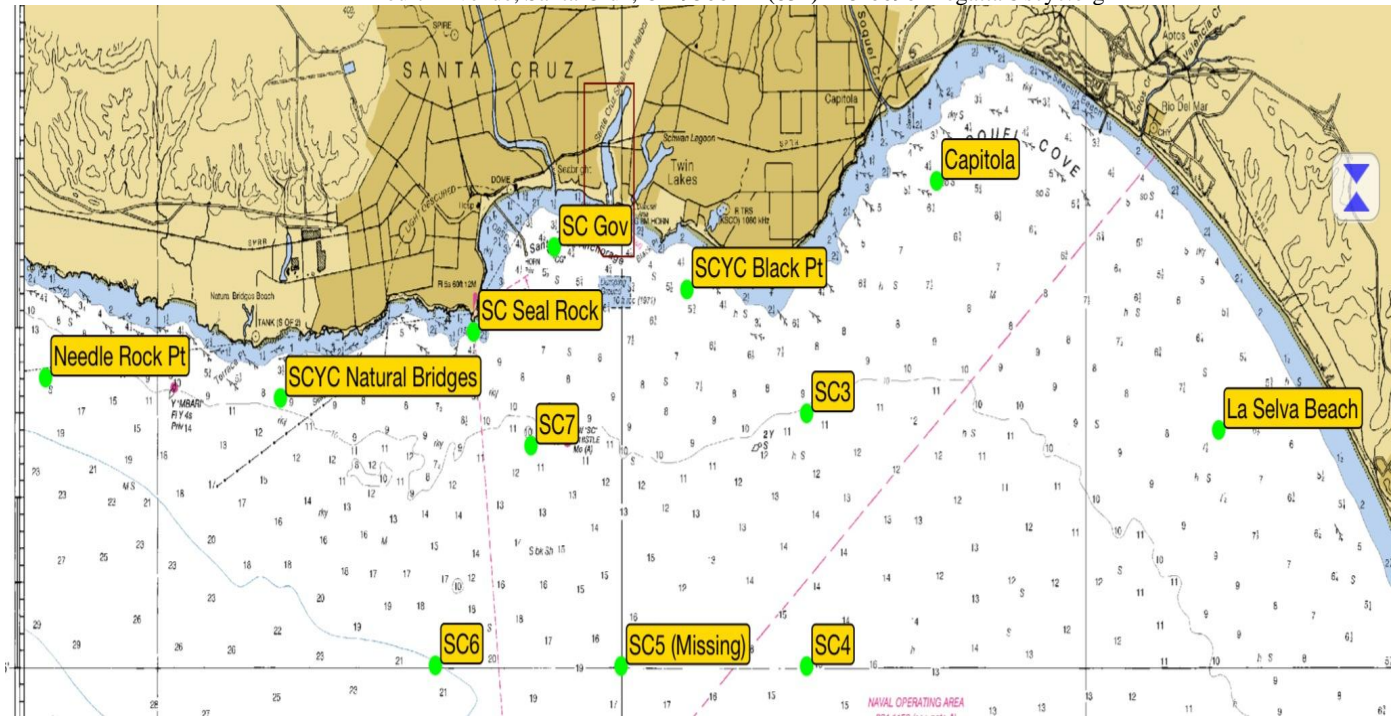
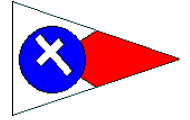
# SANTA CRUZ YACHT CLUB

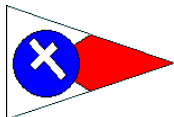
## 2015 FALL SCORE / DOUBLE HANDED SERIES

### AUGUST 23, SEPTEMBER 27 AND OCTOBER 25 OF 2015

### SAILING INSTRUCTIONS

244 Fourth Avenue, Santa Cruz, CA 95062 - (831) 425-0690 - regatta@scyc.org





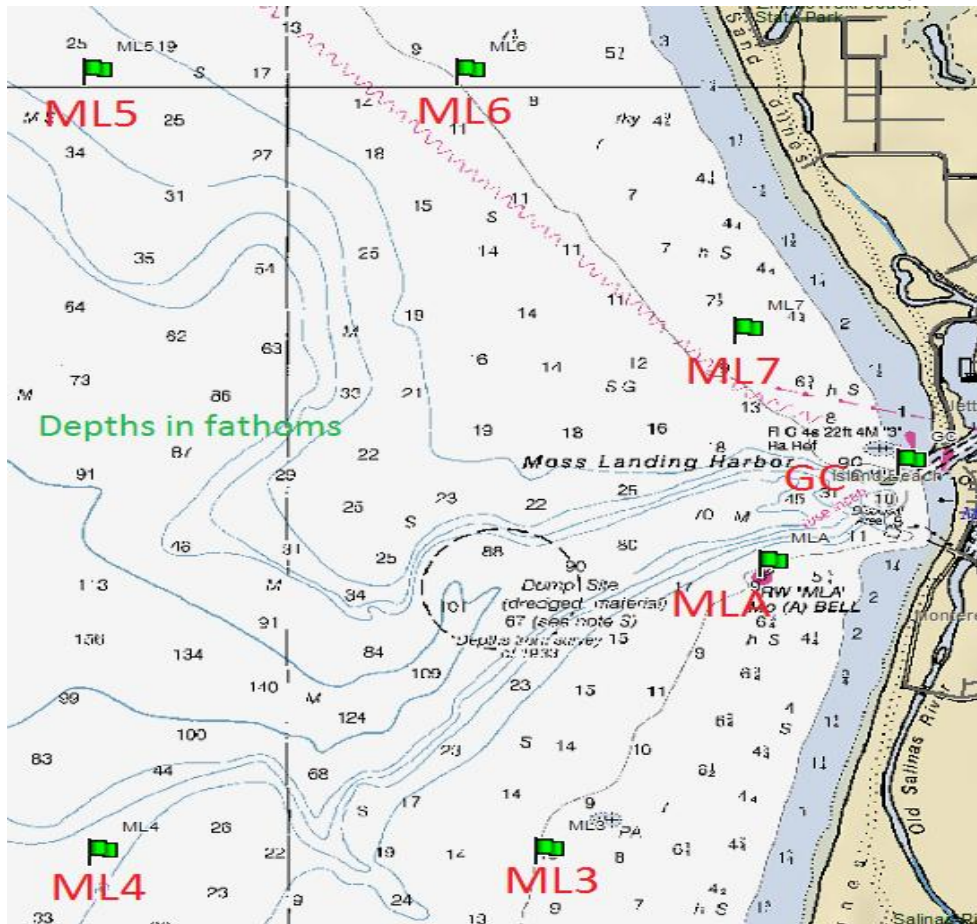
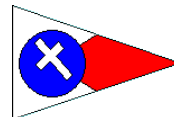
# SANTA CRUZ YACHT CLUB

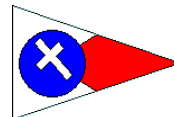
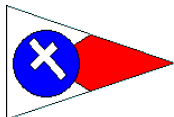
## 2015 FALL SCORE / DOUBLE HANDED SERIES

AUGUST 23, SEPTEMBER 27 AND OCTOBER 25 OF 2015

### SAILING INSTRUCTIONS

244 Fourth Avenue, Santa Cruz, CA 95062 - (831) 425-0690 - regatta@scyc.org





# SANTA CRUZ YACHT CLUB

## 2015 FALL SCORE / DOUBLE HANDED SERIES

### AUGUST 23, SEPTEMBER 27 AND OCTOBER 25 OF 2015

## SAILING INSTRUCTIONS

244 Fourth Avenue, Santa Cruz, CA 95062 - (831) 425-0690 - regatta@scyc.org

