

THE LABOR DAY REGATTA

September 7, 2015

The Rudder Club of Jacksonville

8533 Malaga Avenue

Jacksonville, FL 32244, USA

PHRF RACE SAILING INSTRUCTIONS

1 RULES

- 1.1 The race will be governed by the rules as defined in the current Racing Rules of Sailing (RRS), and the rules of the First Coast Sailing Association.
- 1.2 Racing Rules A4 and A5 are changed by SI 10.4 as follows: "A boat starting later than five minutes after her starting signal will be scored "Did Not Start" without hearing."
- 1.3 Racing rules 35, A4, and A5 of the RRS are changed by SI 13.1 as follows: "A boat failing to finish within 45 minutes (corrected time where applicable) after the first boat in her class will be scored 'Did not Finish' without a hearing".

2 NOTICES TO COMPETITORS

Official notices to competitors will be posted on the official notice board located on the north exterior wall of the Rudder Club. Notices may also be published on the Event Web Site at

<http://www.regattanetwork.com/event/10975>.

3 CHANGES IN THE SAILING INSTRUCTIONS

- 3.1 Changes to the Sailing Instructions will be posted on the official bulletin board on the north exterior wall of the Rudder Club prior to 1200 on the day of the race and on the event web site. Time permitting they will also be distributed by e-mail to those on-line entrants with an e-mail address provided on the registration form on Regatta Network.
- 3.2 Oral changes to the Sailing Instructions may be communicated to each boat while on the water and prior to her warning signal.

4 SIGNALS MADE ASHORE

- 4.1 Signals made ashore will be displayed from the flag pole located on the north side of the Rudder Club.
- 4.2 When AP is displayed ashore "1 minute" is replaced with "not less than 45 minutes" in the race signal AP.
- 4.3 Signals made ashore will also be relayed on Marine VHF Channel 78(US)

5 SCHEDULE OF RACES

- 5.1 Depending on wind conditions one race using FCSA and river navigation marks or three, windward/leeward, round-the-buoy races may be conducted.
- 5.2 Schedule:
MONDAY 7 September 2015 - PHRF Race,
1200 – 1330 - PHRF Late Registration
1400 - Competitors' Meeting (Optional for those registering on line and possessing a copy of the Sailing Instructions).
1455 - Warning signal for first class.

6 CLASS FLAGS

Class flags will be the International Numeral Pennants as depicted in the RRS

Class	Flag	
Spinnaker	P1	
Non-Spinnaker	P2	
Cruiser	P3	

7 RACING AREA

The racing area will be in the St. Johns River between the Buckman Bridge to the south

and the Fuller Warren Bridge to the north as depicted on NOAA Chart 11492.

8 THE COURSE

- 8.1 Race course for PHRF Classes will be displayed from a course board on the committee boat.
- 8.2 Round the mark races will be designated as shown in Attachment A.
- 8.3 A single race using river navigation and FCSA marks will be displayed using the numerical designation of the Race Marks as depicted in Attachment B.
- 8.2 If the Race Committee sets an offset mark in the vicinity of the windward mark, boats shall sail around both marks leaving them on the prescribed side.
- 8.3 If a leeward gate is not set, boats shall round the single leeward mark leaving it to port.

9 MARKS

- 9.1 Round-the-buoy marks 1, 2S, and 2P will be yellow cylinders. Mark 1L will be an orange cylinder. Mark 1L off-set will be a yellow tetrahedron. A new mark laid in accordance with Change of Course procedures will be an orange cylinder.
- 9.2 River marks may be government navigation marks as depicted on NOAA Chart 11492 (as corrected by Notices to Mariners), or FCSA Race Marks. Government marks will be designated by their number as appearing on the chart. FCSA marks will be designated by their Alphabetic designator. Approximate positions are shown in Appendix B.
- 9.3 An orange sphere set to windward of the starting line as a windward mark will be designated "W", WHISKEY.
- 9.3 If an offset mark is set at Mark A or Mark DA the offset mark will be a yellow trapezoid. Boats shall sail around both marks leaving them to port.
- 9.4 A limiting mark may be set to protect the committee boat close to her and on the same end of the starting line. No boat shall pass between the limiting mark and the committee boat.

10 START

- 10.1 The Starting Line will be a line between an orange flag flown on the Race Committee/Signal Boat and a red, inflated sphere set toward the left side of the course from the Committee Boat.
- 10.3 Boats whose warning signal has not been made shall remain clear of the starting area while other boats are in their start sequence.
- 10.4 A boat starting later than five minutes after her starting signal will be scored "Did Not Start" without hearing. This changes Rules A4 and A5.

11 CHANGE OF COURSE AFTER THE START

To change the position of the next mark, the race committee will move the original mark (or the finishing line) to a new position. The change will be signaled before the leading boat has begun the leg, although the mark may not yet be in the new position. Any mark to be rounded after rounding the moved mark may be relocated without further signaling to maintain the course configuration.

12 THE FINISH

If multiple around-the-buoy races are run, the Finish Line will be between an orange flag flown on the Race Committee Boat and a white inflated sphere set to the left side and perpendicular relative to the final leg of the course. If a river mark race is run the Finish Line will be an orange sphere set perpendicular to and to the right side of the finish boat relative to the final leg of the course.

13 TIME LIMIT

- 13.1 The time limit shall be 90 minutes for each class for round the buoy races WL and WS. Boats failing to finish within 30 minutes corrected time after the first boat of their class finishes will be scored "Did not Finish." This changes rule 35 and rule A41.
- 13.2 If a single river race is signaled, the time limit will be 3 hours. Boats failing to finish within 45 minutes corrected time after the first boat of their class finishes will be

scored "Did not Finish." This changes rule 35 and rule A41.

14 PROTESTS AND REQUESTS FOR REDRESS

14.1. Protests shall be written on forms available at the Rudder Club. They shall be filed with the Regatta Chairman. Protest time will end 90 minutes after the last boat has finished the last race of the day. Protests will be heard in the approximate order received.

14.2 Protest notices will be posted on the Official Bulletin Board within 30 minutes following the protest time limit.

14.3 RRS Section D of Appendix T, Arbitration, is in effect.

15 SAFETY

15.1 The Race Committee boat and Race Support boats will maintain a listening watch on Marine VHF Channel 78(US).

15.2 Boats shall attempt to check in with the Race Committee by sailing past on the non-course side prior to their class Warning Signal.

15.3 Boats withdrawing from a race prior to finishing shall make every effort to ensure that Race Committee is notified that they have dropped out

15.4 All competitors are required to conform to the U.S. Coast Guard regulations and the RRS concerning personal floatation devices and other required equipment.

15.5 Boats shall not impede the passage of a vessel which can safely navigate only within a narrow channel, and give way to commercial fishing vessels while fishing or vessels with restricted ability to maneuver.

15.6 In accordance with Rule 42.3(i), providing no significant advantage is gained, a boat may employ propulsion using an engine or other method to remain clear of a non-racing vessel when required by Inland Rules.

16 SCORING

16.1 PHRF Classes will be scored using PHRF Time on Distance

16.2 One race must be completed to constitute a series.

17 PRIZES

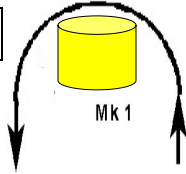
Results will be announced at the Rudder Club following the race. First, second, and third place prizes will be awarded in classes of more than five finishing boats. First and second place prizes will be awarded in classes of four to five finishing boats. A first place prize will be awarded in classes of three or less finishing boats.

Quick Response Codes - Read the following on your Barcode Reader App for On-line registration or latest Regatta Information . PHRF Mobile <http://www.regattanetwork.com/event/10975>



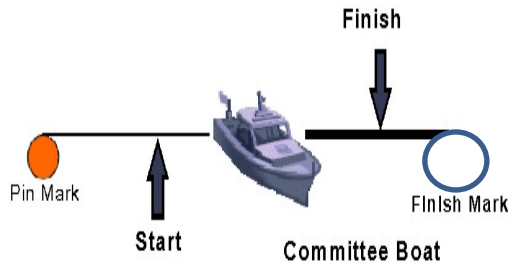
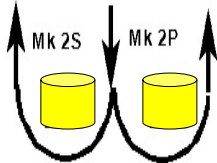
Round –the-Buoy Courses (Attachment A)

Mark 1 Round to port



Not to Scale

Mark 2 (Gate)
Round either mark



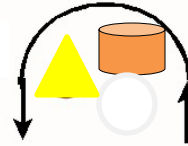
Windward Leeward Short

WS

Course: Start, 1, 2P or 2S, 1, Finish

NOTE: Offset marks and gates are optional.

Attachment A

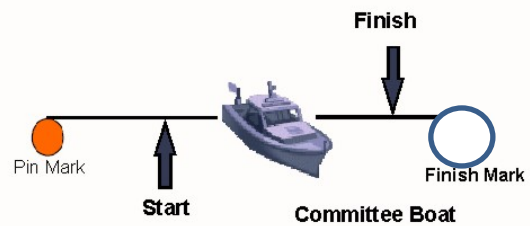
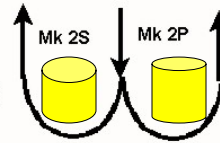


Mark 1L with optional
offset Round both to port

Not a mark of
the course

Not to Scale

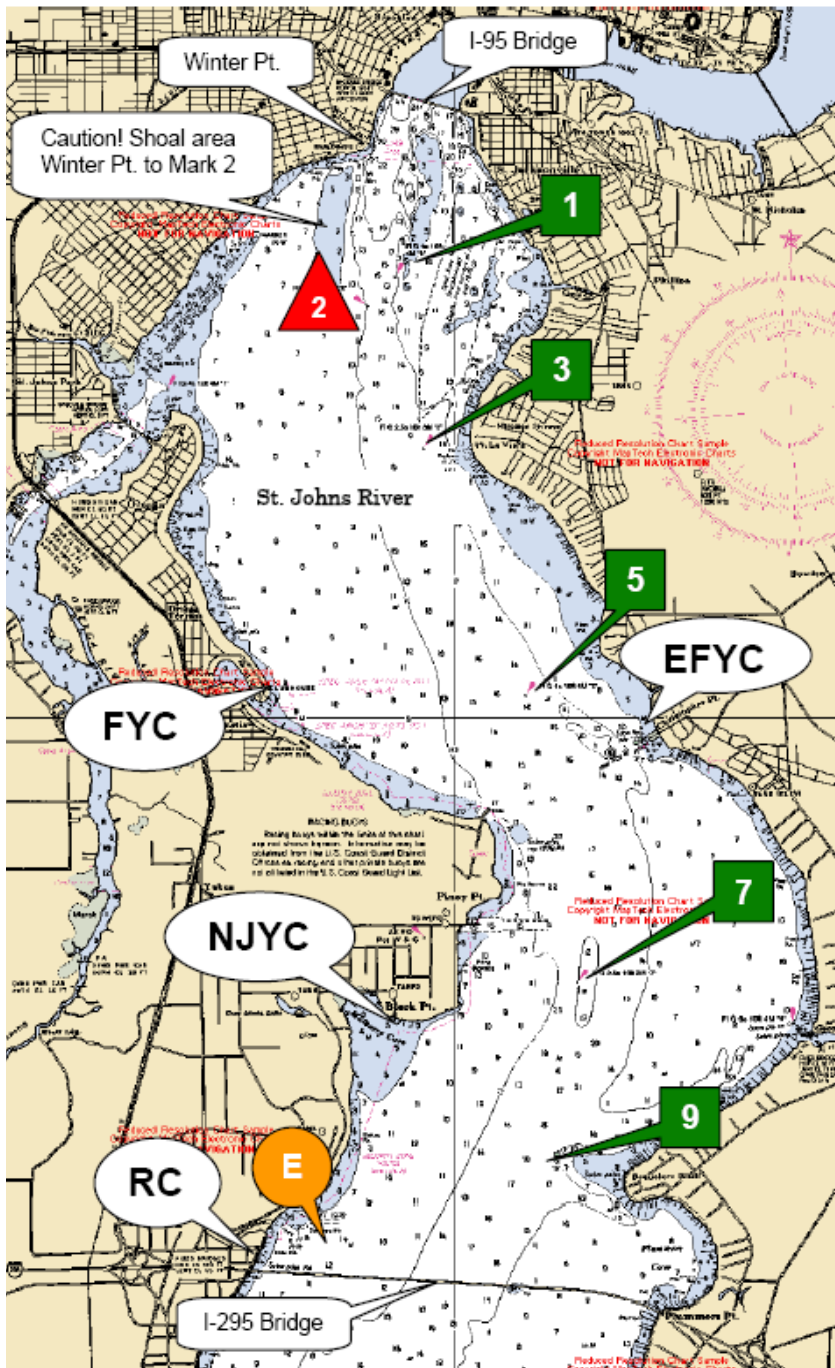
Mark 2 (Gate)
Round either mark



Windward Leeward Long

WL

Course Start, 1L, 2P or 2S, 1L, Finish



Race Marks	GPS Position	Range and Bearing between I			
		From	To	Range n.m.	Beari Mag.
1	N30° 17.798' W81° 40.440'	E	7	2.3	048°
		E	9	1.5	073°
3	N30° 16.723' W81° 40.219'	1	3	1.1	175°
		1	5	2.8	168°
5	N30° 15.013' W81° 39.470'	3	1	1.1	355°
		3	5	1.7	163°
7	N30° 13.312' W81° 39.078'	3	7	3.7	169°
		5	1	2.8	348°
9	N30° 12.272' W81° 39.241'	5	3	1.7	343°
		5	7	1.9	175°
E	N30° 11.700' W81° 40.900'	5	9	2.9	181°
		7	E	2.3	229°
RC	N30° 11.700' W81° 40.900'	7	1	4.6	350°
		7	3	3.6	349°
FYC	N30° 11.700' W81° 40.900'	7	5	1.9	355°
		7	9	1.1	193°
NJYC	N30° 11.700' W81° 40.900'	9	E	1.5	253°
		9	5	2.9	001°
Winter Pt.	N30° 11.700' W81° 40.900'	9	7	1.1	013°

Note: Mark "E" is no longer a fixed mark. If designated as a mark of the course it will be replaced by an inflatable yellow mark.