



# GBCA Offshore Regatta

Gulf of Mexico

September 26th-27th, 2015

Galveston Bay Cruising Association

1500 Marina Bay Dr. Suite 1592 • Building #113B • Clear Lake Shores, TX

## Sailing Instructions

### 1. RULES

The Race will be governed by The Racing Rules of Sailing (RRS) 2013-2016 including US SAILING Prescriptions, PHRF of Galveston Bay, the Notice of Race and these Sailing Instructions.

The following RRS are modified herein:

Sailing Instructions 5.3, 9.2 and 9.3 modifies RRS 62.1(a)

Sailing Instruction 11 modifies RRS 61

Sailing Instruction 13 modifies RRS 35

### 2. NOTICES TO COMPETITORS

Notices to Competitors will be posted at:

[https://www.regattanetwork.com/clubmgmt/applet\\_club\\_events.php?CLUB\\_ID=162](https://www.regattanetwork.com/clubmgmt/applet_club_events.php?CLUB_ID=162) .

### 3. CHANGES TO THE SAILING INSTRUCTIONS

Any change to the sailing instructions or notice of race will be posted before 2200 on the day prior that it will take effect.

### 4. Race Schedule

4.1 The warning gun for the race will be no earlier than 1155 hours September 26<sup>th</sup> 2015.

4.2 The class starting order for the race and the class flags are shown in Appendix A.

### 5. RADIO COMMUNICATION

5.1 Radio communication will be conducted on VHF channel 72.

5.2 If a weather-related postponement is required it will be announced at 1000 on VHF Channel 72, and accompanied by the appropriate signals from the shore end of the starting line.

5.3 If in signaling Individual Recalls in accordance with RRS 29.1, as a courtesy, the Race Committee will attempt to broadcast the names or sail numbers of boats that have started early. Failure to make such a broadcast, failure of a boat to receive that broadcast, a boat's order in that broadcast, or the promptness of that broadcast will not be grounds for redress. This modifies RRS 62.1(a).

### 6. CHECK-IN PROCEDURE

All yachts intending to race shall check in with the Race Committee on VHF Channel 72 no later than 30 minutes prior to their starting time.

7. **START LINE** The Start Line will be the line between Houston Ship channel Marker 11 and an Orange Flag displayed on shore from the south side of the Channel. The line will be oriented on an angle that is approximately in line with the TEXAS CITY OUTER RGE "A" High Range located ashore (Iso G 6s 65ft).

### 8. THE START

8.1 This race will be started according to RRS 26. See the accompanying Appendix A to determine the assigned fleet start times. The Race committee will make flag and sound signals from the shore end of the starting line, and will transmit countdowns to starting times over VHF channel 72.

## **9. THE COURSE**

**9.1** This is an overnight race, with the fleets starting on the afternoon of September 26<sup>th</sup> and finishing on the morning of September 27<sup>th</sup>. The courses for this regatta are given in Appendix B. The Race Committee will announce the courses for each of the fleets on VHF channel 72 prior to that fleet's warning signal.

**9.2** Boats shall not interfere with Houston Ship Channel. The Official Course Lengths are indicated in Appendix B. Charts showing overviews of the courses are shown as Appendix B. These charts are schematic in nature and are not to be used for navigation. Photographs of the offshore marks are provided in Appendix C. The photos are a best effort to describe the marks but have not been verified by the Race Committee. Failure of the photographs to match the actual marks shall not be grounds for redress. This modifies RRS 62.1a

**9.3** In the event a mark is missing, boats shall round the coordinates of the missing mark. Failure of a mark to be present shall not be grounds for redress. This modifies RRS 62.1a

## **10. THE FINISH**

**10.1** The Finish Line will be the line between Houston Ship channel Marker 11 and an Orange Flag displayed on shore from the south side of the Channel. The line will be oriented on an angle that is approximately in line with the TEXAS CITY "A" OUTER RGE mark located ashore (Iso G 6s 65ft).

**10.2** Boats shall hail the Race Committee on VHF Channel 72 when passing Galveston Jetty Marker 5A to port identifying the boat by name and sail number.

**10.3** If the Race Committee does not respond to a boat's hail on VHF Channel 72, the Boat shall be prepared to record her own finish time. Finish time shall be marked when TEXAS CITY OUTER RGE "A" High Range located ashore (Iso G 6s 65ft). is at a bearing of 203 degrees from the vessel's helm. GPS time shall be used.

**10.4** Boats shall hail the Race Committee again on Channel 72 when preparing to cross the finishing line, identifying the boat by name and sail number. Boats crossing the finish line at night shall display a light on their mainsail number.

**10.5** If the Race Committee does not acknowledge a boat at or immediately after her finish, the boat shall record her finish time, and, if possible, the names of the boats finishing before and after her. The RC will be on station starting at 0500 Hrs Sunday September 27<sup>th</sup> until 1400 Hrs or until the last boat racing has finished. Boats finishing before 0500 Hrs should be prepared to take their own finish time, including boat ahead and behind if able and report to the RC at 281.216.4082. (voice or text message acceptable). Sending an Email to [rdhunkins@verizon.net](mailto:rdhunkins@verizon.net) is also acceptable.

## **11. PROTESTS**

The protest and redress procedures for this regatta will utilize basic elements of the new RRS Appendix T, a US Sailing Prescription. Protests shall be communicated to the Race Committee before leaving the race area and must be filed in writing by 2359 hours CDT on September 29<sup>th</sup>. This modifies RRS 61. Protests shall be filed with a GBCA representative at the GBCA Clubhouse. To arrange for a representative, contact the PRO, Bob Hunkins at 281-216-4082.

## **12. WITHDRAWING PROCEDURES**

**12.1** Attention is called to RRS 4: Decision to Race, "The responsibility for a boat's decision to participate in a race or to continue *racing* is hers alone."

**12.2** The Race Committee places high priority on accounting for every yacht participating in a race. It is imperative that any yacht withdrawing from a race makes its best and most persistent efforts to notify other parties of such withdrawal at the earliest opportunity. Withdrawing yachts should make every effort to contact the Race Committee and/or other nearby yachts to communicate the withdrawal via VHF channel 72. If radio communication is unavailable, call the Race Committee phone number: 281.216.4082 and leave either a voice message or a text message. Additionally, sending an E-mail to [rdhunkins@verizon.net](mailto:rdhunkins@verizon.net) will also suffice. The proper reporting of a withdrawal should include; yacht name, sail number and skipper's name.

## **13. TIME LIMIT**

Racing will be concluded as of 1400 hours Sunday September 27th. Yachts not finished after this time will be scored as Did Not Finish (DNF). This modifies RRS 35.

**14. SCORING**

The Low Point system, RRS Appendix A will apply. One race constitutes a regatta. The Race Committee will score the race using the PHRF Time on Distance method for handicap fleets.

**15. AWARDS PRESENTATION**

The Award Presentation will be held in conjunction with the GBCA Fall regatta, Scheduled for November 7<sup>th</sup>, 2015.

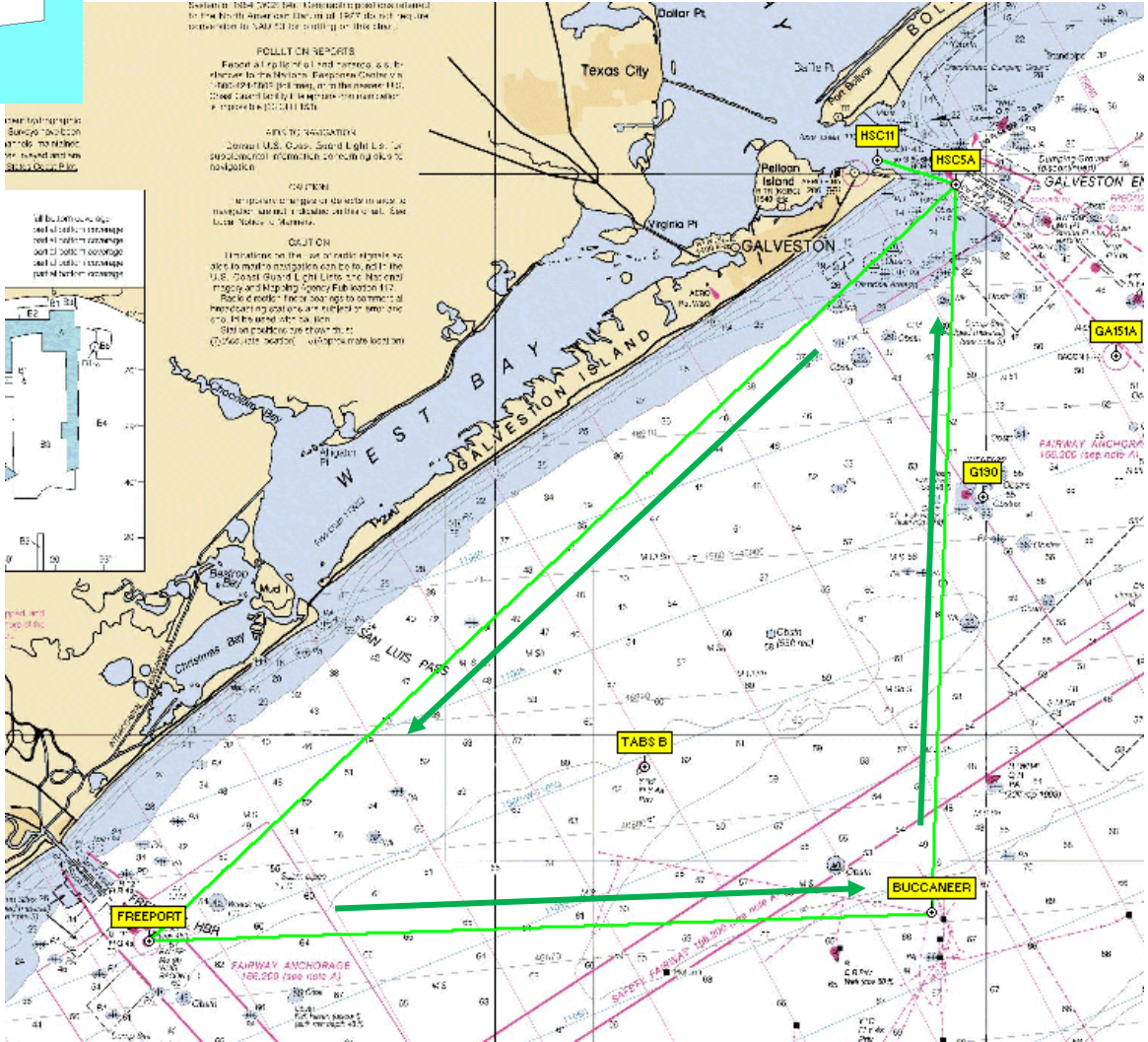
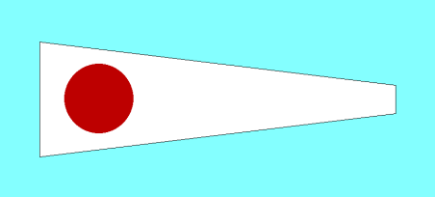
**Appendix A**  
**2015 GBCA Offshore Regatta**  
**Class Flag/ Starting time**

<b>Fleet</b>	<b>Flag</b>	<b>Start Time</b>
PHRF Spin and PHRF Non-Spin	Purple	1200 (Warning signal 1155)

# Appendix B

## Course #1 "Freeport Triangle"

FOR REFERENCE ONLY. DO NOT USE FOR NAVIGATIONAL PURPOSES

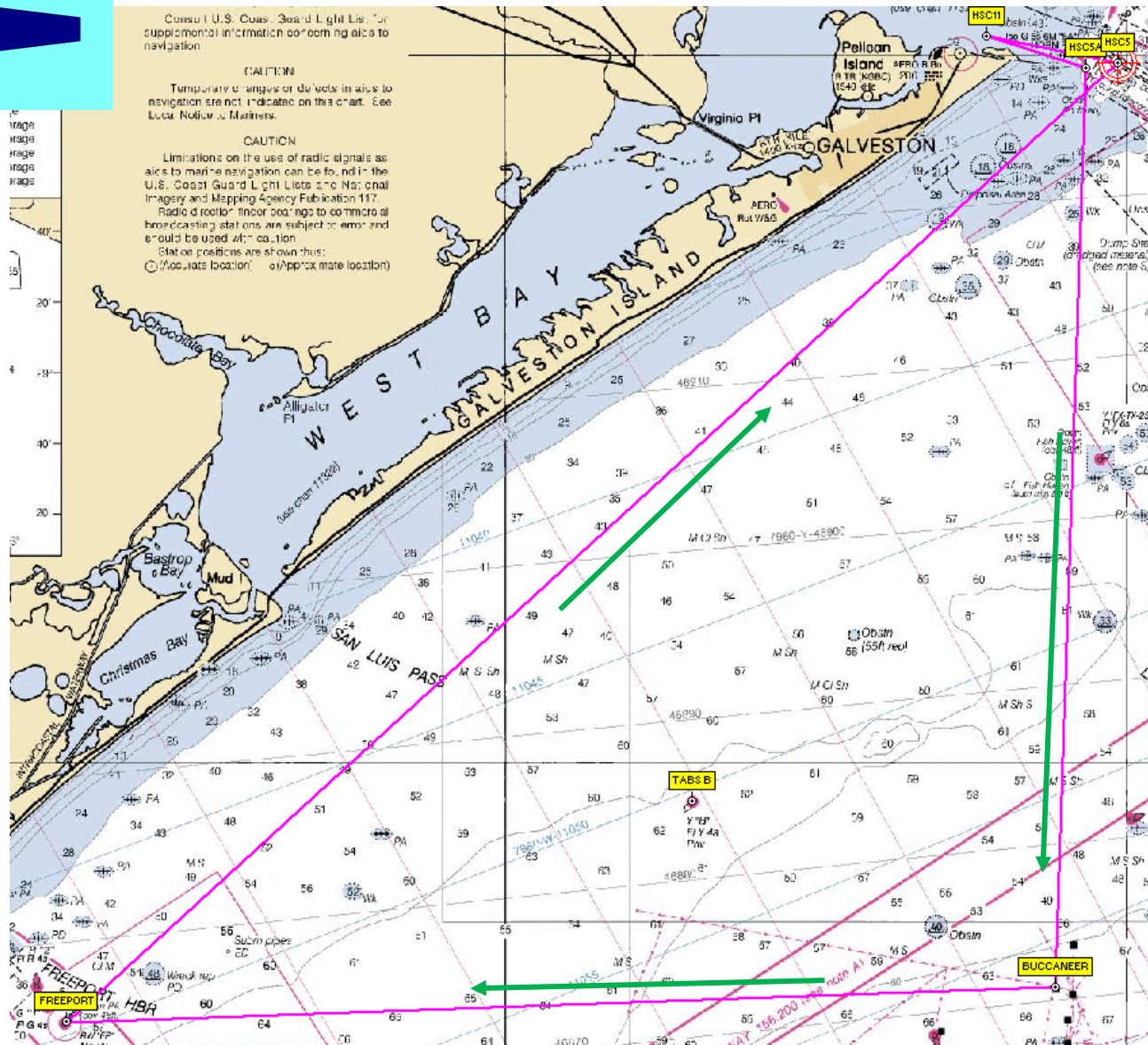
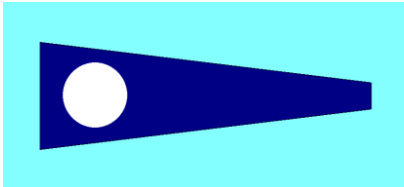


## Course #1 “Freeport Triangle” Mark listing

Name	Description	Latitude	Longitude	Bearing	Distance(nm)	Accumulated Distance
Start	Between HSC #11 (“11” Fl G 2.5s) and Flag	N29°20.530’	W094°44.470’			
Galv South Jetty #5A	Gal 5A (Iso G 6s 30ft 6M Ra Ref) to starboard	N29°19.642’	W094°41.275’	105	2.93	2.93
Freeport Sea Buoy	RW “FP” Mo(A) to port	N28°52.628’	W095°14.14’0	225	39.39	42.32
Buccaneer	Buccaneer Rig to port	N28°53.648’	W094°42.263’	085	27.97	70.29
Galveston Entrance #5	Gal #5 (“5”, Fl G 2.5s) to port	N29°19.768’	W094°40.260’	001	26.09	96.38
Finish	Between HSC #11 (“11” Fl G 2.5s) and Flag	N29°20.530’	W094°44.470’	279	3.75	100.13

# Course #2 "Reverse Freeport Triangle"

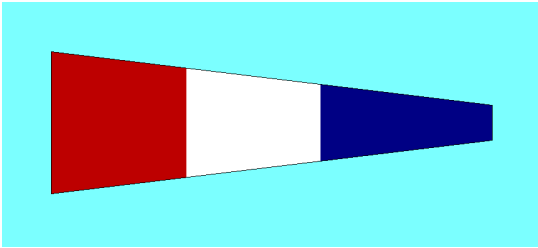
FOR REFERENCE ONLY. DO NOT USE FOR NAVIGATIONAL PURPOSES



## Course #2 “Reverse Freeport Triangle” Mark listing

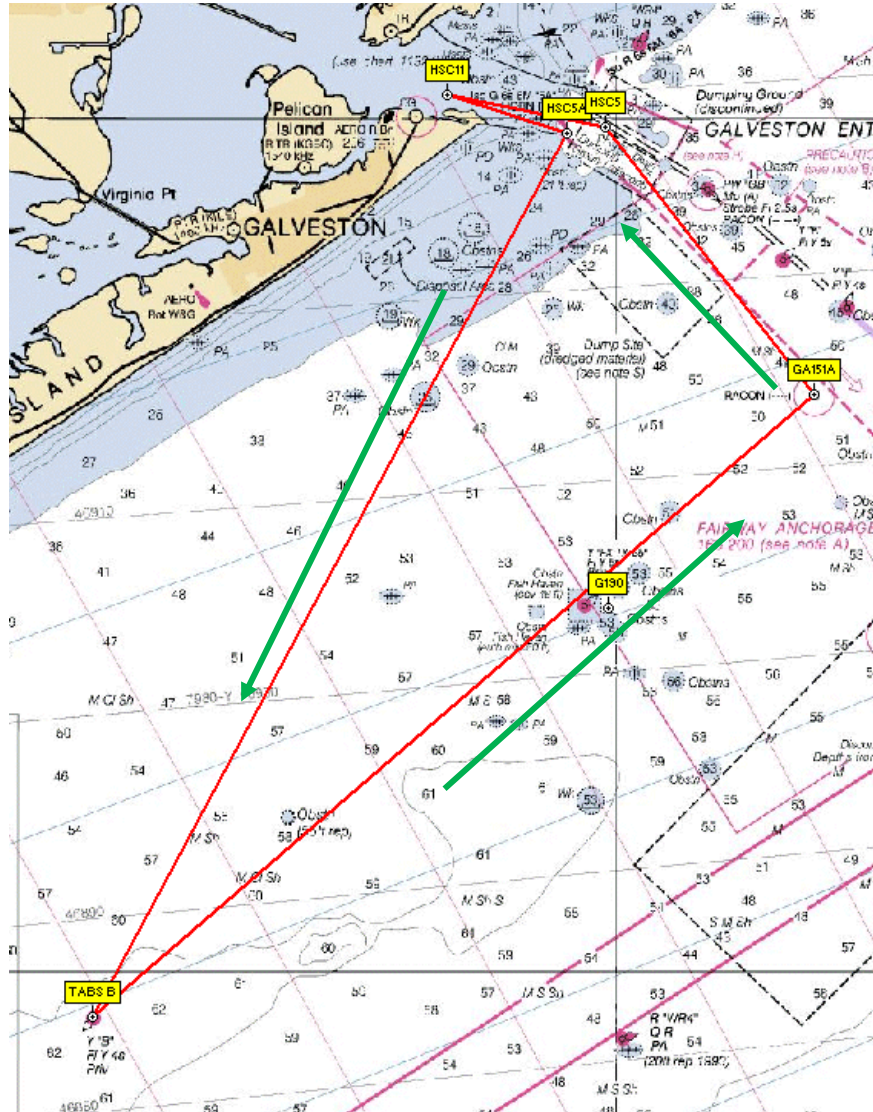
Name	Description	Latitude	Longitude	Bearing	Distance(nm)	Accumulated Distance
Start	Between HSC #11 (“11” Fl G 2.5s) and Flag	N29°20.530’	W094°44.470’			
Galv South Jetty #5A	Gal 5A (Iso G 6s 30ft 6M Ra Ref) starboard	N29°19.642’	W094°41.275’	105	2.93	2.93
Buccaneer	Buccaneer Rig to starboard	N28°53.648’	W094°42.263’	179	25.92	28.84
Freeport Sea Buoy	RW “FP” Mo(A) to starboard	N28°52.628’	W095°14.140’	266	27.97	56.82
Galveston Entrance 5	Gal #5 (“5”, FL G 2.5s) to port	N29°19.768’	W094°40.260’	45	40.13	96.95
Finish	Between HSC #11 (“11” Fl G 2.5s) and Flag	N29°20.530’	W094°44.470’	279	3.75	100.7





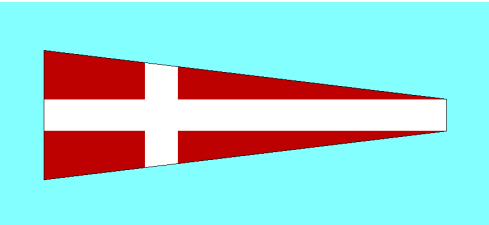
# Course #3 "San Luis Triangle"

FOR REFERENCE ONLY. DO NOT USE FOR NAVIGATIONAL PURPOSES



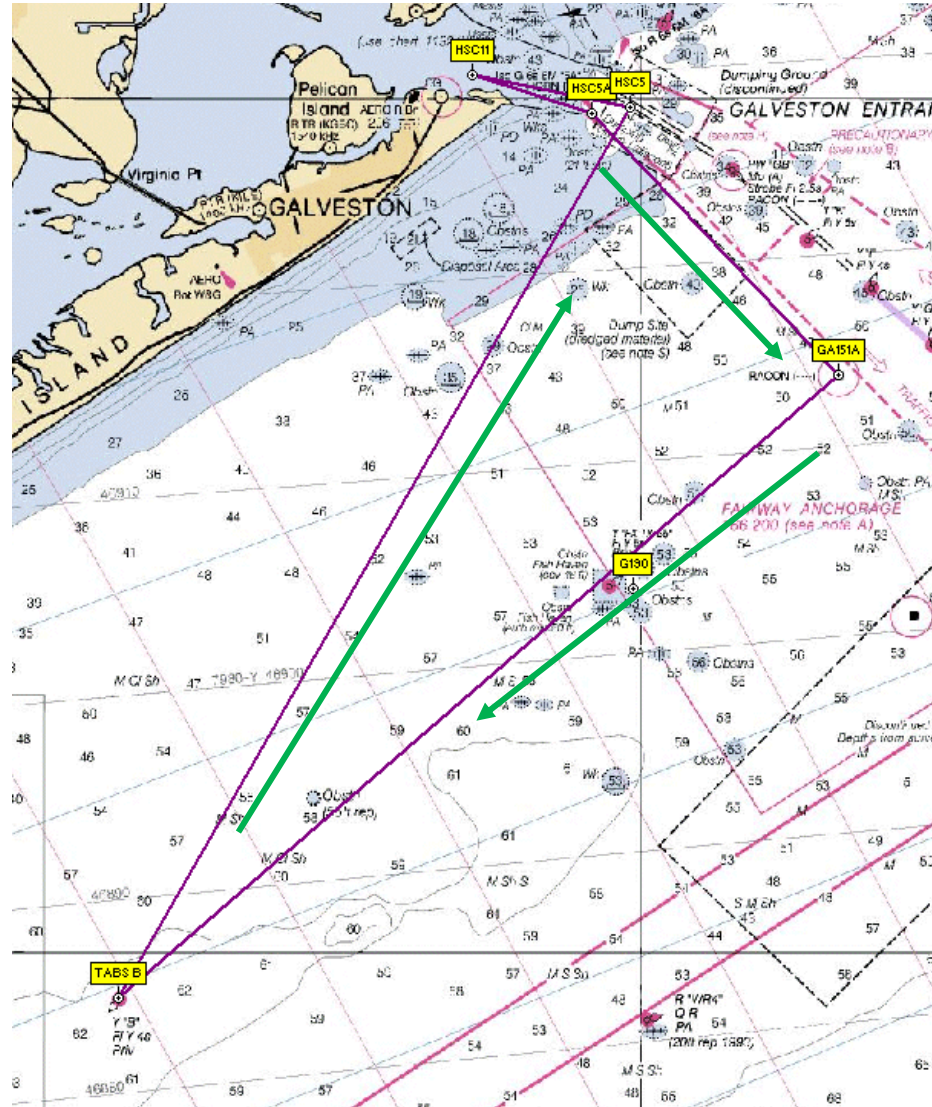
## Course #3 “San Luis Triangle” Mark listing

Name	Description	Latitude	Longitude	Bearing	Distance(nm)	Accumulated Distance
Start	Between HSC #11 (“11” Fl G 2.5s) and Flag	N29°20.530’	W094°44.470’			
Galv South Jetty #5A	Gal 5A (Iso G 6s 30ft 6M Ra Ref) to starboard	N29°19.642’	W094°41.275’	105	2.93	2.93
TABS B	TABS B (“B”, FL Y4s Priv) to port	N28°58.907’	W094°53.976’	206	23.46	26.39
GA151 A	GA151A to port	N29°13.530’	W094°34.690’	46	22.30	48.68
Galveston Entrance 5	Gal #5 (“5”, FL G 2.5s) to port	N29°19.768’	W094°40.260’	320	7.89	56.58
Finish	Between HSC #11 (“11” Fl G 2.5s) and Flag	N29°20.530’	W094°44.470’	279	3.75	60.33



# Course #4 “Reverse San Luis Triangle”

FOR REFERENCE ONLY. DO NOT USE FOR NAVIGATIONAL PURPOSES



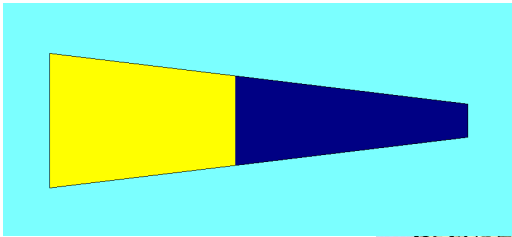
## Course #4 “Reverse San Luis Triangle”

### Mark listing

Name	Description	Latitude	Longitude	Bearing	Distance(nm)	Accumulated Distance
Start	Between HSC #11 (“11” Fl G 2.5s) and Flag	N29°20.530’	W094°44.470’			
Galv South Jetty #5A	Gal 5A (“5A” Iso G 6s 30ft 6M Ra Ref) to starboard	N29°19.642’	W094°41.275’	105	2.93	2.93
GA151 A	GA151A to starboard	N29°13.530’	W094°34.690’	134	8.38	11.31
TABS B	TABS B (“B”, FL Y4s Priv) to starboard	N28°58.907’	W094°53.976’	227	22.30	33.60
Galveston Entrance 5	Gal #5 (“5”, FL G 2.5s) to port	N29°19.768’	W094°40.260’	27	24.00	57.6
Finish	Between HSC #11 (“11” Fl G 2.5s) and Flag	N29°20.530’	W094°44.470’	279	3.75	61.36

# Course #5 "East Beach Triangle"

FOR REFERENCE ONLY. DO NOT USE FOR NAVIGATIONAL PURPOSES

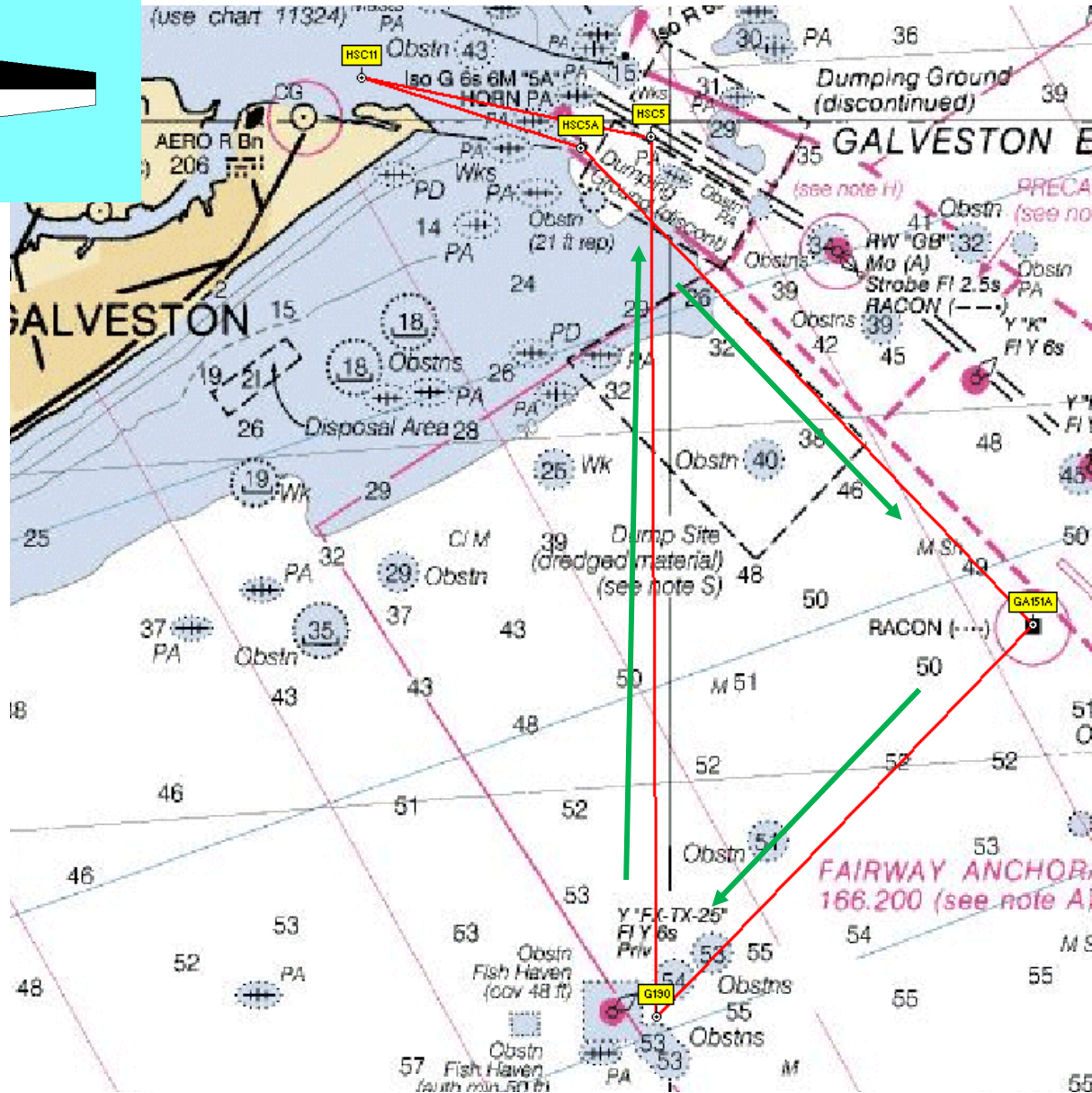


## Course #5 “East Beach Triangle” Mark Listing

Name	Description	Latitude	Longitude	Bearing	Distance(nm)	Accumulated Distance
Start	Between HSC #11 (“11” Fl G 2.5s) and Flag	N29°20.530’	W094°44.470’			
Galv South Jetty #5A	Gal 5A (Iso G 6s 30ft 6M Ra Ref) to starboard	N29°19.642’	W094°41.275’	105	2.93	2.93
G190	G 190 to port	N28°08.500’	W094°40.180’	173	11.14	14.07
GA151 A	GA151A to port	N29°13.530’	W094°34.690’	41	6.94	21.01
Galveston Entrance 5	Gal #5 (“5”, FL G 2.5s) to port	N29°19.768’	W094°40.260’	320	7.89	28.91
Finish	Between HSC #11 (“11” Fl G 2.5s) and Flag	N29°20.530’	W094°44.470’	279	3.75	32.66

# Course #6 "Reverse East Beach Triangle"

FOR REFERENCE ONLY. DO NOT USE FOR NAVIGATIONAL PURPOSES



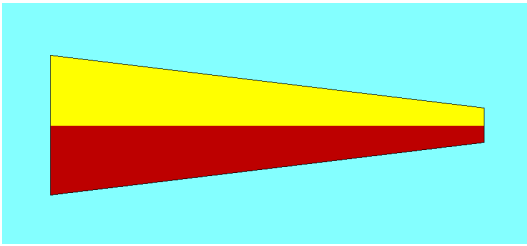
## Course #6 “Reverse East Beach Triangle” Mark listing

Name	Description	Latitude	Longitude	Bearing	Distance(nm)	Accumulated Distance
Start	Between HSC #11 (“11” Fl G 2.5s) and Flag	N29°20.530’	W094°44.470’			
Galv South Jetty #5A	Gal 5A (Iso G 6s 30ft 6M Ra Ref) to starboard	N29°19.642’	W094°41.275’	105	2.93	2.93
GA151 A	GA151A to	N29°13.530’	W094°34.690’	134	8.38	11.31
G190	G 190 to starboard	N28°08.500’	W094°40.180’	221	6.94	18.25
Galveston Entrance 5	Gal #5 (“5”, FL G 2.5s) to port	N29°19.768’	W094°40.260’	357	11.23	29.47
Finish	Between HSC #11 (“11” Fl G 2.5s) and Flag	N29°20.530’	W094°44.470’	279	3.75	33.23



# Course #7 “Buccaneer Run”

FOR REFERENCE ONLY. DO NOT USE FOR NAVIGATIONAL PURPOSES

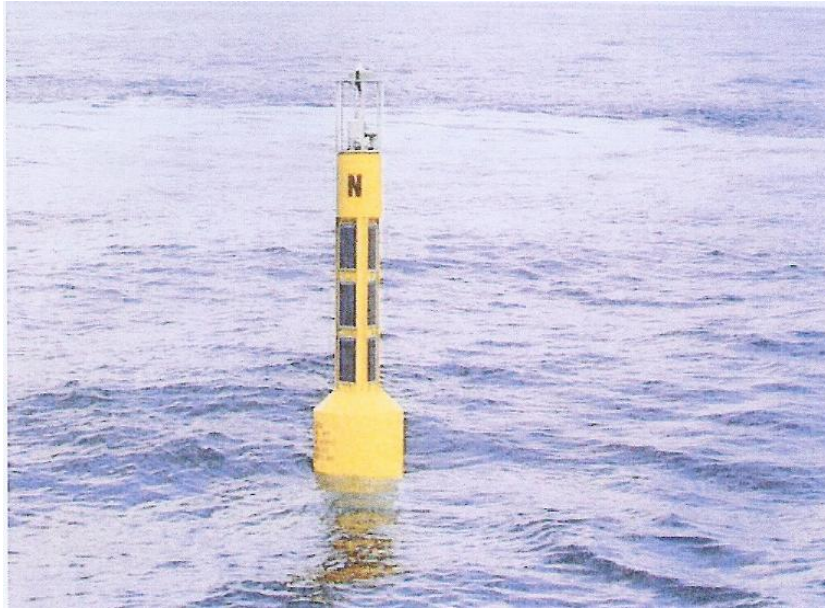


## Course #7 “Buccaneer Run” Mark listing

Name	Description	Latitude	Longitude	Bearing	Distance(nm)	Accumulated Distance
Start	Between HSC #11 (“11” Fl G 2.5s) and Flag	N29°20.530’	W094°44.470’			
Galv South Jetty #5A	Gal 5A (Iso G 6s 30ft 6M Ra Ref) to Starboard	N29°19.642’	W094°41.275’	105	2.93	2.93
Buccaneer	Buccaneer Rig to Port	N28°53.648’	W094°42.263’	179	25.92	28.84
Galveston Entrance 5	Gal #5 (“5”, FL G 2.5s) to port	N29°19.768’	W094°40.260’	001	26.09	54.93
Finish	Between HSC #11 (“11” Fl G 2.5s) and Flag	N29°20.530’	W094°44.470’	279	3.75	58.68

## Appendix C

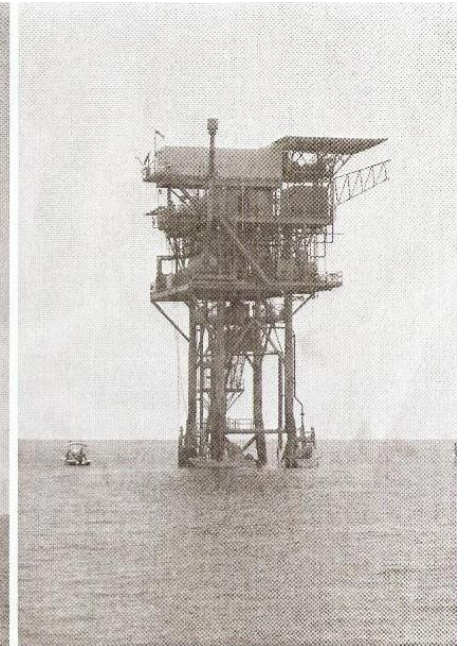
### Offshore mark Photographs



TABS B



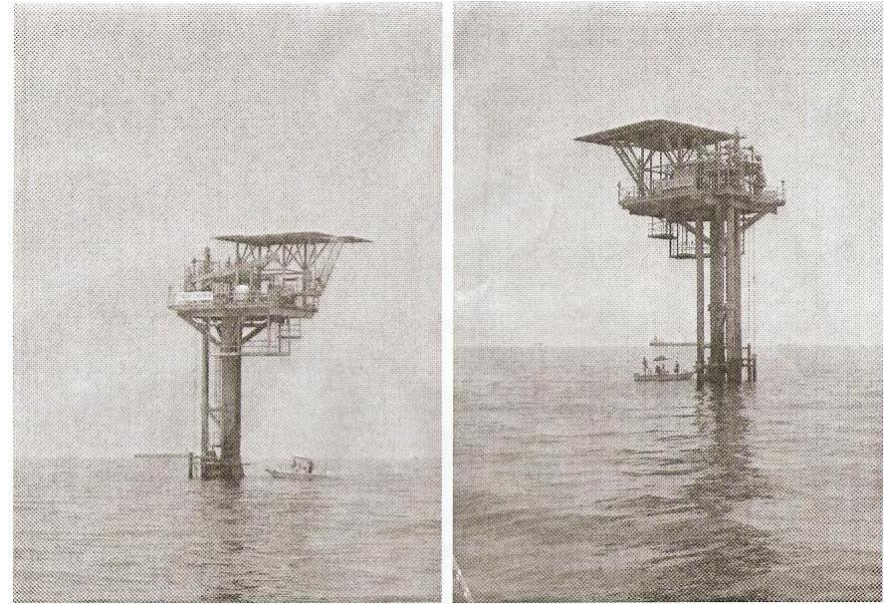
GA190



Buccaneer Rig



Buccaneer Rig



GA 151A

## Appendix D Entrants

### PHRF NonSpin

<u>Skipper</u>	<u>Club</u>	<u>Sail#</u>	<u>Boat Name</u>	<u>Fleet / Division</u>	<u>Make/Model</u>	<u>Rating</u>
1. Brantly Minor	GBCA	001	Other Woman	PHRF NonSpin /	Beneteau / Oceanis 400	137
2. Arthur / Jim Boos Jr. / Apple	G.B.C.A.	12440	Tenacious	PHRF NonSpin /	Morgan /	195

### PHRF Spin

<u>Skipper</u>	<u>Club</u>	<u>Sail#</u>	<u>Boat Name</u>	<u>Fleet / Division</u>	<u>Make/Model</u>	<u>Rating</u>
1. J.D. Hill	LYC	USA74	Second Star	PHRF Spin /	J Boats / J/122	33
2. Emmett Dickheiser	GBCA	51338	Musica	PHRF Spin /	Aerodyne / 38	42
3. Andy Wescoat	GBCA	45	Harm's Way	PHRF Spin /	J Boats / J109	69
4. Greg A Casamayor	GBCA	46864	Joyride	PHRF Spin /	Beneteau / First 42S7	75
5. J B Bednar	GBCA/LYC	296	Stinger	PHRF Spin /	J-Boats / J/105	78