



*Waikiki Yacht Club*  
1599 Ala Moana Blvd  
Honolulu, Hawaii, 96814  
808.995.4405 | [regatta@waikikiyachtclub.com](mailto:regatta@waikikiyachtclub.com)

## **Sailing Instructions**

### **Waikiki Offshore Keelboat Championship**

**October 17, 2015**

**1. RULES:**

1.1. The regatta will be governed by the rules as defined in the Racing Rules of Sailing (RRS), the prescriptions of US SAILING, pertinent Class/Fleet Rules, by the Waikiki Yacht Club Standing Sailing Instructions, the Notice of Race and these Sailing Instructions.

1.2. The RRS are changed as follows:

1.2.1. Rule 52 - The use of powered winches is authorized.

1.2.2. Rule 56 does not apply

1.2.3. Rule 55 is changed to allow the use of banding for safety purposes

**2. NOTICES TO COMPETITORS:** Notices to competitors will be posted on the official notice board located in the WYC on the regatta board.

**3. CHANGES TO THE SAILING INSTRUCTIONS:** Any change to the sailing instructions will be posted before 0900 on the day it will take effect, except that any change to the schedule of races will be posted by 2000 on the day before it will take effect.

**4. SIGNALS MADE ASHORE:** Signals made ashore will be displayed from the WYC flagpole

**5. SCHEDULE OF RACING:**

5.1. The first warning will be at 1225 October 17, 2015. Subsequent starts will be in five minute intervals in the following order: Cruising, X, A / B

5.2. Number of races: There will be three races sailed per class

**6. CLASS FLAGS**

PH X – Pink with X

PH A & B – Black with 1

Cruising – Light Green with C

**7. RACING AREA:** The attachment shows the location of the racing area

**8. THE COURSES:**

8.1. X, A, B:

Course 1: Mark 1 to port - Mark 2 to port – Finish (signaled with a #1 pennant)

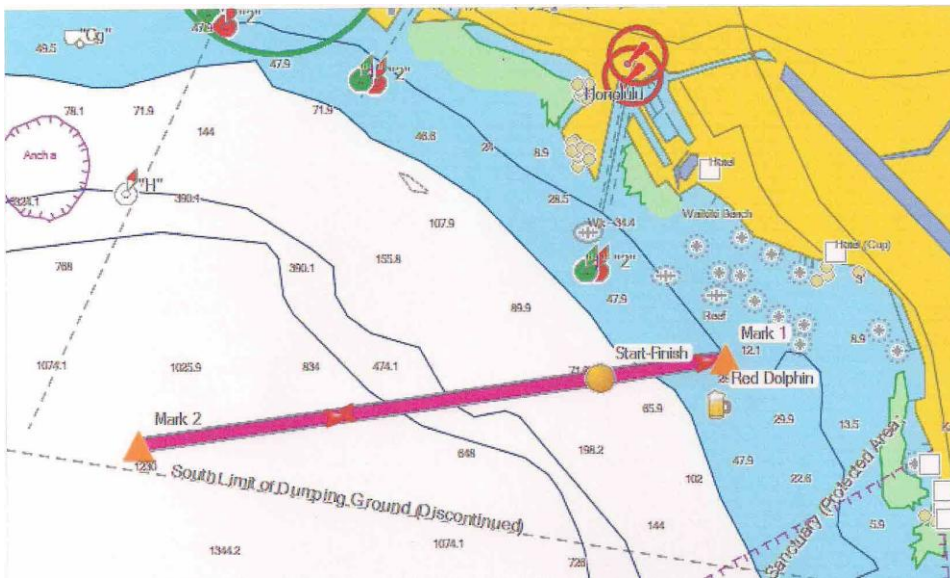
Course 2: Mark 1 to port - Mark 2 to port - Mark 1 to port - Mark 2 to port – Finish (Signaled with #2 pennant)

8.2. Cruiser Course: Start – Mark1 to Starboard –DH buoy to Port - HH buoy to Starboard – Finish at G1

**9. THE START & FINISH:** The starting line will be between two yellow inflatable tetrahedrons

10. **TIME LIMIT:** The time limit for the races will be one and a half hour for the first boat to finish.
11. **PROTESTS:** Protests shall be delivered to WYC within 45 min. after the race committee boat docks. The protest time limit and a list of protests received will be posted on the notice board. Hearings will be held as soon as possible after racing at WYC.
12. **SCORING:** Yachts will be scored in a class under PHRF system as endorsed by HYRA. Cal 20 will be scored using the Low Point System. A & B will also be scored together, however awarded as separate fleets
13. **PRIZES:** Awards will be at WYC after the event
14. **DISCLAIMER OF LIABILITY:** Competitors participate in the regatta entirely at their own risk. See rule 4, Decision to Race. The organizing authority will not accept any liability for material damage or personal injury or death sustained in conjunction with or prior to, during, or after the regatta
15. **INSURANCE:** Each participating boat shall be insured with valid third party liability insurance with a minimum cover of \$300,000 per incident or the equivalent.

### X, A / B Courses 1 & 2



### Cruising

