



Royal Yacht Club Hollandia

2016 29 er Class World Championships

Notice to Competitors

Number: 01

Date: July 24 2016

Rule(s):

Subject: Change in Sailing Instructions/ Fleet assignments/Flotation devices

Time of 11.45 hours

posting:

SI 11.2 Delete and replace with:

Starting Marks will be race committee vessels. Finishing marks will be a race committee vessel at the starboard side and a Dan buoy at the port side of the finishing line.

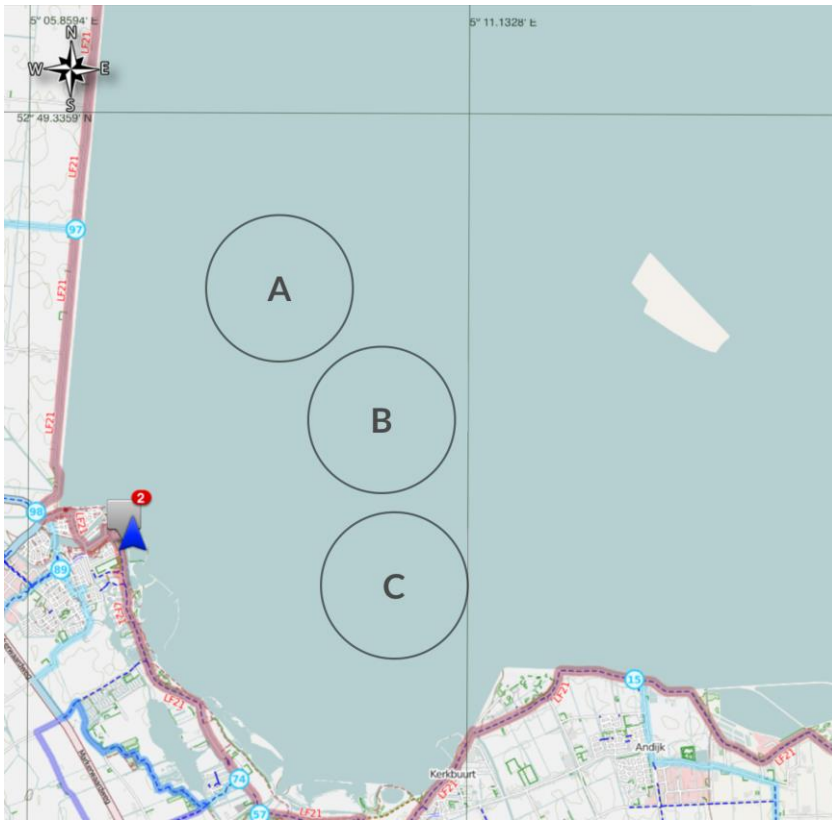
Add SI 11.3 A race committee boat signalling a change of a leg of the course is a mark as provided in instruction 13.2.

SI 29 GPS Tracking Units,

remove "between 11:30 and 13:30 on the day of the practice race and", there will be no tracking units for the practice race.

Attachement A of the sailing instructions delete and replace with:

Course Area A : compass bearing appr 30 degrees
Course Area B: compass bearing aappr 67 degrees
Course Area C: compass bearing appr 100 degrees



Assignments of the fleets

- Allocation of fleets to racing areas and starting order during practice race and qualifying series:
 - Yellow starts first on racing area A
 - Blue starts second on racing area A
 - Red starts first on racing area B
 - Green starts second on racing area B
 - White starts first on racing area C
 - Purple starts second on racing area C

Flotation devices

For your safety, the organizing committee reminds you about the following class rule:

C.3 PERSONAL EQUIPMENT

C.3.1 MANDATORY

- The boat shall be equipped with personal flotation devices (PFD) for each crew member to the minimum standard EN393 or ISO 12402-5 Level 50 or the Notice of Race may prescribe alternatives.
- The use of inflatable buoyancy vests is not permitted while racing.

Please ensure your flotation device complies to one of these standards.

The Race Committee