



SAILING INSTRUCTIONS
USA Junior Olympic Sailing Festival



3-4 DECEMBER 2016
(These instructions **DO NOT** apply to Green Fleet)

US SAILING Center of Martin County
1955 NE Indian River Drive Jensen Beach, Florida

1. RULES
 - 1.1 This regatta will be governed by the rules as defined in *The Racing Rules of Sailing* (RRS).
2. ELIGIBILITY AND ENTRY
 - 2.1 Individual or family membership in US SAILING and their respective class associations is required for each applicant, helmsperson and crew, at the time of application.
 - 2.2 Eligible sailors may be entered by completing an entry form, registering with the organizing authority and paying the entry fee.
3. NOTICES TO COMPETITORS
 - 3.1 Notices to competitors will be posted on the Official Notice Board located at Regatta Headquarters. Each competitor has the responsibility to check this Board for information pertaining to the race.
4. CHANGES IN SAILING INSTRUCTIONS
 - 4.1 Any change in the Sailing Instructions will be posted before 0830 on the day on which it will take effect.
 - 4.2 Changes to the schedule of races will be posted before 1830 on the day before the change is to take effect.
5. SIGNALS MADE ASHORE
 - 5.1 Signals made ashore will be displayed on the flagpole at the end of the dock at Regatta Headquarters. Flag "AP" (Answering Pennant) with two sounds, means: "The racing is postponed. Do not leave the harbor." The first warning signal will be displayed not less than 30 minutes after "AP" is lowered (one sound).
6. SAILING AREA
 - 6.1 Racing will take place on the Indian River east of the Sailing Center.
7. COMPETITORS' MEETING
 - 7.1 The competitors' meeting for RWB Optimis, 420s, Lasers and O'Pen Bics will be held at 1000 on Saturday 3 December 2016 at Regatta Headquarters. The Green Fleet Competitor's Meeting will be at 1030. Attendance is mandatory.

8. SCHEDULE OF EVENTS

8.1 Twelve races per class are scheduled; one race per class constitutes a regatta.

8.2 The schedule is as follows:

Friday 2 Dec	1600-1800	Early check-in
Saturday 3 Dec	0800	Continental Breakfast
	0800 -1000	Competitor Check-in and Coach/Spectator Flag Check-in
	1000	Competitors' Meeting (RWB OPTI, 420/Laser/O'Pen Bic
	1030	Competitors' Meeting (Green Fleet)
	1130	First Signal
	1700	Cook out & Raffle at the USSCMC
Sunday 4 Dec	0800	Continental Breakfast
	0930	First Signal, all classes
	1430	No warning after this time
		Awards - as soon as practical after racing

9. COURSES

9.1 See attachments

9.2 The course will be designated by letters and/or numerals displayed on the white board on each circle's RC signal boat.

9.3 A gate at the leeward mark may be used. If a gate mark is missing, round the remaining one to port.

9.4 An offset mark may be used at the windward mark.

10. STARTING SIGNALS

10.1 Start line will be either:

10.1.1 between a staff displaying an orange flag on an RC Boat at the starboard end of the line and the port end starting mark, or,

10.1.2 between staffs displaying orange flags on RC Boats at each end of the starting line.

10.2 A boat starting later than 5 minutes after her starting signal will be scored, "Did Not Start" (DNS). This changes Rule A4.1 and A5.

10.3 Succeeding Classes will be started at any time after the starting signal for the preceding class by displaying the Warning Signal (class flag) for the succeeding class.

10.4 The time limit for each race is one hour.

10.5 If Flag U has been displayed as the preparatory signal, no part of a boat's hull, crew or equipment shall be in the triangle formed by the ends of the Starting line and the first mark during the last minute before her starting signal. If a boat breaks this rule

and is identified she shall be disqualified without a hearing but not if the race is restarted or resailed or postponed or abandoned before the starting signal. This changes RRS rule 26 and rule 30.

11. FINISH

11.1 Finish line will be either:

11.1.1 between a staff with an orange flag on a RC boat and the port end finish mark or,

11.1.2 between staffs displaying orange flags on RC Boats at each end of the line.

11.2 RRS 35 is modified such that if a boat or boats are unreasonably delaying the completion of a race and the start of subsequent races the Race Committee may award a boat or boats that have not finished and are still racing a finish place on the water or award them points equal to the average of the places they would have received had they finished and direct them to return to the starting area. Fractions are rounded up.

12. SCORING

12.1 When six or more races have been completed, each boat's series score shall be the total of her races scores excluding her worst score.

12.2 In the event the fleet is split into divisions, when a competitor has completed six or more races, each boat's series score shall be the total of her race scores excluding her worst score.

12.3 If we split the fleet into four divisions, RRS 30.2 44.3(c) and A4.2 are changed so that scores are based on the combined number of boats registered in the two largest divisions.

12.4 If time, wind, weather or other contingencies make the completion of a current or an additional scheduled round robin impractical, the regatta may be terminated and the results based on the standings at the completion of the immediate prior round robin this changes RRS A2.

13. PENALTY SYSTEM

13.1 Rule 44.1 is modified to allow a boat a Scoring Penalty for a breach of a rule of Part 2 after the incident, but prior to the protest hearing, by acknowledging the infringement before arbitration or by accepting the opinion of the arbitrator. This scoring penalty shall be 40% of the number of boats entered (rounding 0.5 upward), but shall not be less than four places, added to her actual finish position. However, she shall not be scored worse than Did Not Finish (DNF).

14. ARBITRATION

14.1 For protests involving an alleged breach of a rule of Part 2, a short arbitration hearing may be held prior to a protest hearing. If an arbitration hearing is held, SI 14.2 through 14.4 shall apply.

14.2 After a written protest form is delivered to the Protest Desk, one representative from each boat will meet with the arbitrator unless the protestor requests that the protest be

withdrawn. No witnesses will be allowed. Protests not resolved by arbitration will be forwarded to the protest committee.

- 14.3 A boat that accepts the arbitration's opinion that she broke a rule of Part 2, shall receive a penalty score of 40% as detailed in Sailing Instruction 13.1.
- 14.4 The acceptance of an arbitration penalty cannot be grounds for redress or be appealed.

15. PROTESTS

- 15.1 Add 61.1 (a) (5) Immediately after finishing or withdrawing from the race in which the infraction occurred, a protesting yacht shall notify the RC of the racing number of any and all protested boats. Notice shall be given to the Finish boat. If that boat is not on station, the report can be given to any other Race Committee boat. The Race Committee must acknowledge the hail by protesting boats.
- 15.2 Upon landing, the Race Committee shall post on the official notice board the time of landing of the Race Committee Signal boat, the numbers of all boats protesting and being protested that were received and all boats penalized by the Race Committee on the Official Notice Board.
- 15.3 Protests shall be written on forms available at Regatta Headquarters and filed within the protest time limit which is 30 minutes after the landing of the Race Committee Signal Boat at the Sailing Center. This changes RRS 61.3.
- 15.4 Protests will be heard in the approximate order in which they were received and the hearings will start as soon as practical but not later than the close of protest time.
- 15.5 RRS 62.1 shall be modified by adding: 62.1(e) failure of equipment chartered from USSC, Martin County.

16. SAFETY AND CHECK-OUT / CHECK IN-PROCEDURES

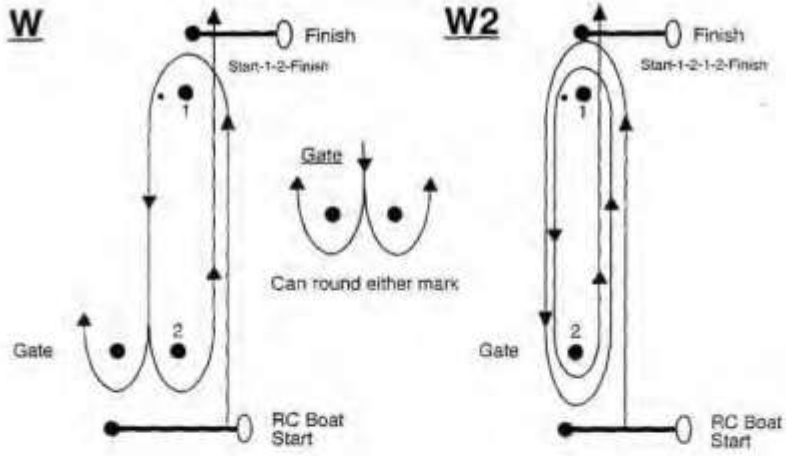
- 16.1 Competitors who are US citizens or US residents must wear a US Coast Guard approved personal flotation device (PFD), properly secured at all times, from dock to dock except when temporarily adding or removing clothing. Competitors who are citizens or residents of another country shall wear either a US Coast Guard approved PFD or a PFD approved by the country of their citizenship or residence, properly secured at all times, from dock to dock except when temporarily adding or removing clothing. Wet suits, dry suits and inflatable PFD's do not constitute adequate personal buoyancy. Failure to do so is protestable only by Race Committee.
- 16.2 If any boats have finished a race before the onset of foul or threatening weather and the Race Committee determines to clear boats from the water, the RC signal boat will blow three (3) horns and display Code Flag "H" at which time all remaining boats racing shall immediately abandon the race and go ashore. The Chief Judge may either score any boats not finished or order the race abandoned.
- 16.3 Each Optimist must be equipped with a suitable towline and a bailing scoop.
- 16.4 A boat that withdraws or retires for any reason shall inform the RC of their intention for that race and any other scheduled races, or, when that is impossible, immediately upon arriving ashore. Failure to do so may result in disqualification from subsequent races that day.

- 16.5 Each boat shall check in with the Race Committee boat displaying Code Flag “L” before the first race of each day.
- 16.6 Each competitor will receive a numbered wrist band upon check-in that corresponds to their assigned boat spot and Safety Sign Out/In Board. Every competitor **must** have their wrist band with them while sailing and must be able to show their wrist band if asked by the Race Committee. Immediately upon returning to shore the wrist band must be placed on the Safety Board located on the ground level on the east side of east stairs at Regatta Headquarters. Competitors who do not return their bands to the Safety Board within 45 minutes of the posted Signal Boat dock time will be reported to the Protest Committee for action which may result in a scoring penalty of 10%.
- 16.7 Competitors who lose their wristband shall personally check-in with the safety attendant prior to the expiration time noted in SI 16.6. The safety attendant will be found at the Safety Board.
- 16.8 Competitors may not sail without a wristband. Lost wrist bands must be replaced to continue racing.
 - a. Replacement wrist bands will cost \$5
 - b. Replacement wrist bands will be available at the scorer’s table located in the center office on the second floor of Regatta Headquarters.
- 16.9 A competitor retiring from a race shall notify a Race Committee boat or safety boat before leaving the course, and notify the Race Committee immediately upon returning to shore at which time the competitor’s wristband should be hung up on the Safety Board.

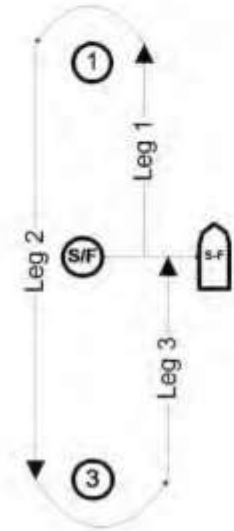
17. COACH AND SUPPORT BOATS

- 17.1 Team leaders, coaches and other support personnel shall not be in the racing area, or within 300 feet of boats racing, from the time of the warning signal for the first class to start until all boats have finished that race or the race committee signals postponement, general recall or abandonment. If the jury receives a report of a violation of this rule, it may call a hearing to investigate the incident and may report the infraction to their Club and US SAILING or penalize boats associated with the support personnel who do so.
- 17.2 Coaching will be allowed for only the bottom half of the Green Fleet, the procedures for which will be discussed at the Competitors’ Meeting.

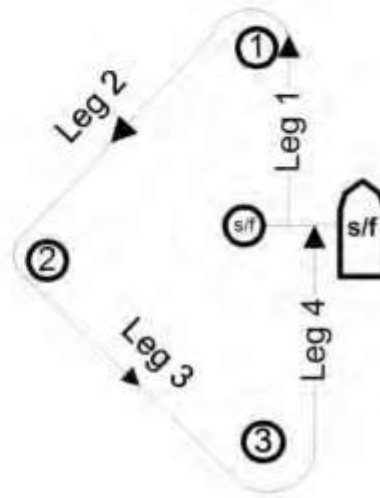
Optional Courses for Junior Olympic Sailing Festival
Optis, 420s, Bics



Mid-leg Start/finish



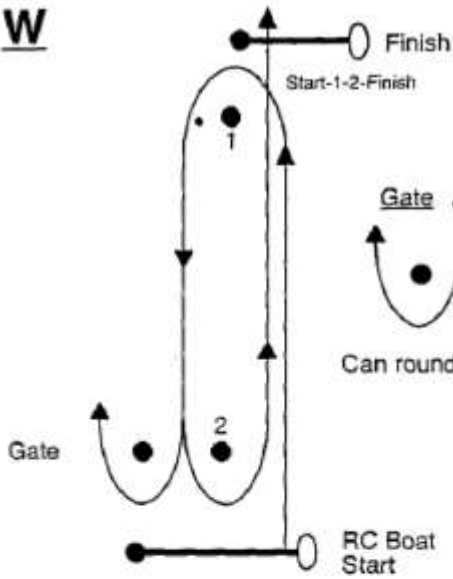
Mid-leg Start/finish



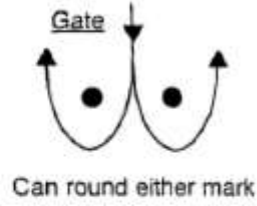
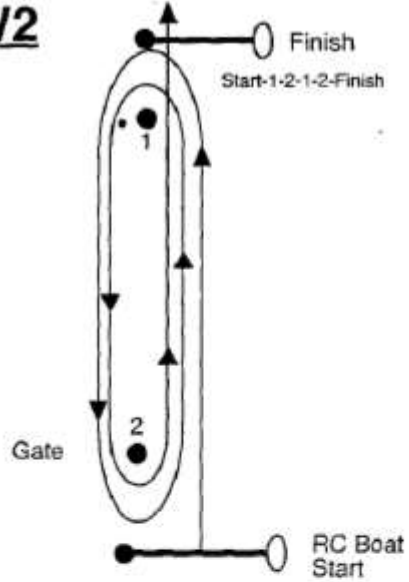
Club 420 Courses

Courses

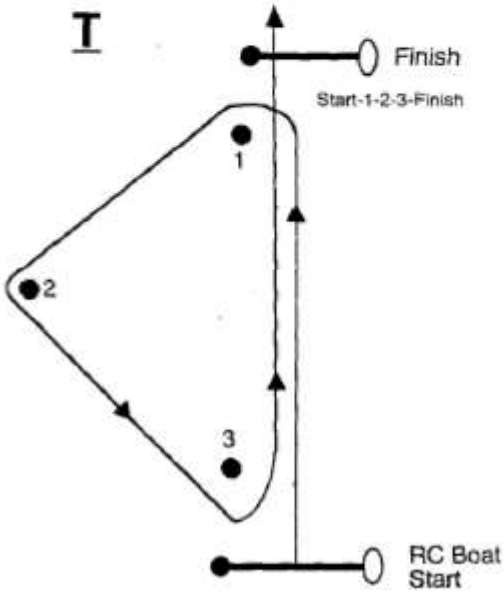
W



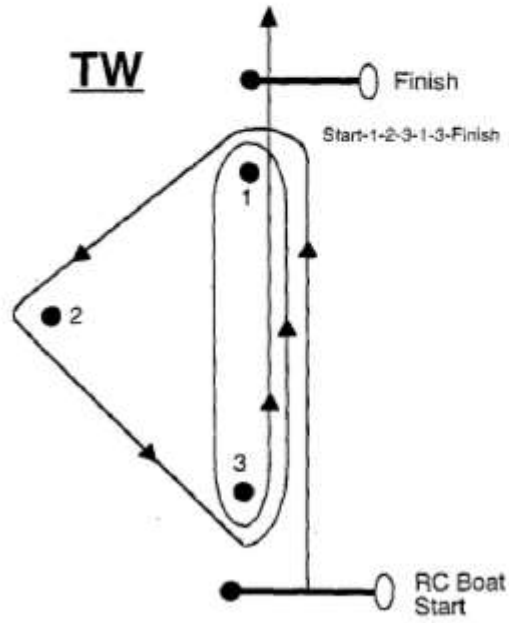
W2



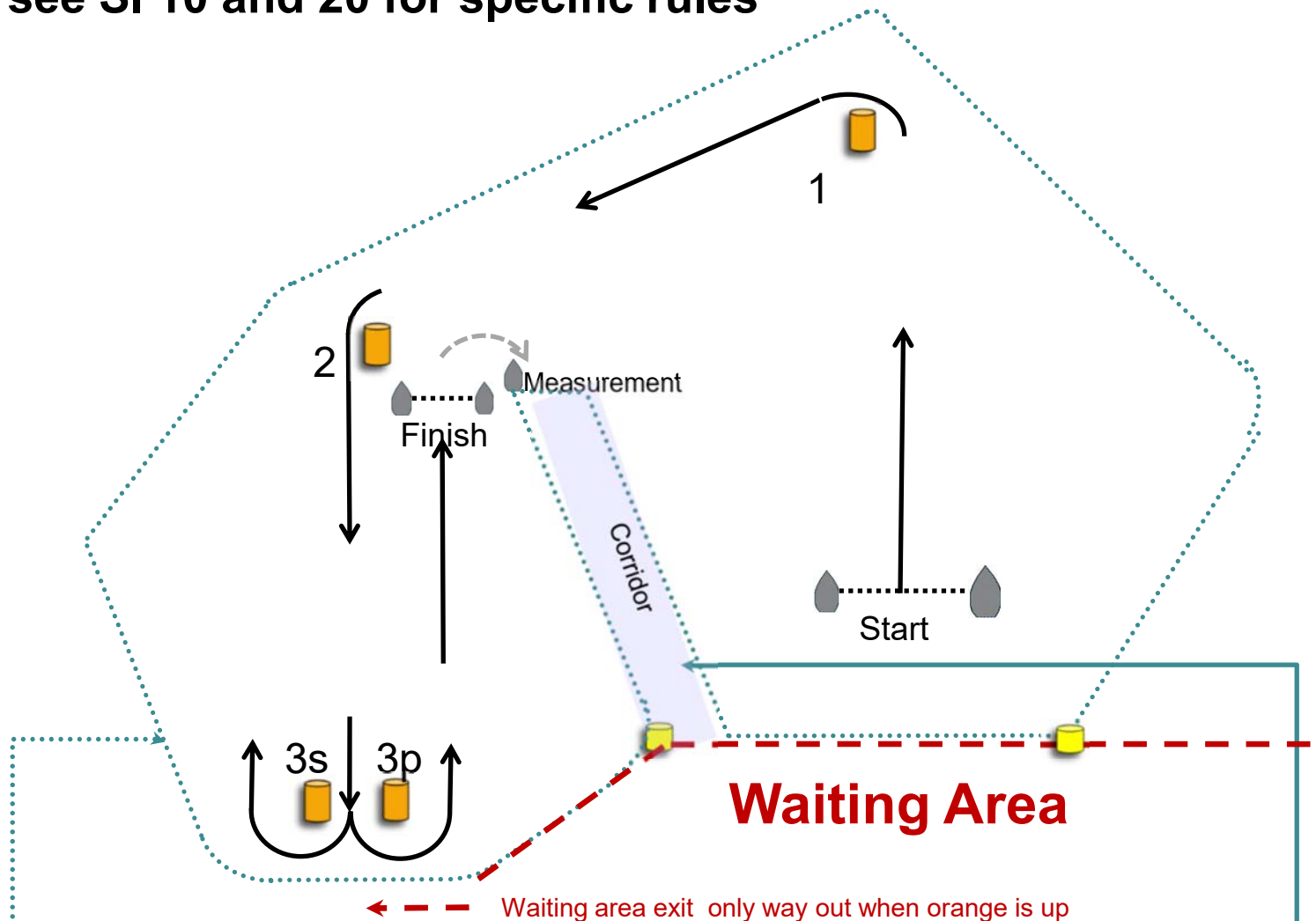
I



TW



Coach and Support Boat “Go” and “No-Go” Guidance, see SI 10 and 20 for specific rules



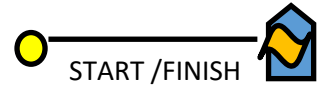
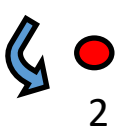
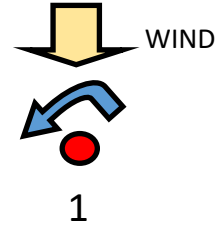
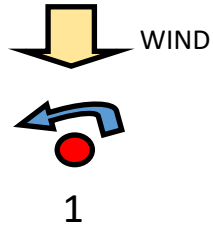
Waiting area: only place support boats may anchor...should be below the red line while RC is flying orange starting flags, except that you can leave to follow first start of a set but *only* to the LEFT around marks 3s/3p. After the 2nd start, you can go up either side as long as you keep out of the racing area

After a first start, flag F allows sailors in the second start to leave the waiting area, but NOT coach and support boats. Wait for orange to be dropped.

Corridor – coach boats *only* allowed to talk briefly to sailors after finishing.

Racing area – no go while boats are racing! ALSO extends to exclude any area within 100 yards of a racing boat.

420 Course Diagram



T: START - 1 - 2 - 3 - FINISH

TW: START - 1 - 2 - 3 - 1 - 3 - FINISH

TW2: START - 1 - 2 - 3 - 1 - 3 - 1 - 3 -FINISH

TW3: START - 1 - 2 - 3 - 1 - 3 - 1 - 3 -1 - 3 -FINISH

W1: START - 1 - 3 - FINISH

W2: START - 1 - 3 - 1 - 3 - FINISH

W3: START - 1 - 3 - 1 - 3 -1 - 3 - FINISH

W4: START - 1 - 3 - 1 - 3 -1 - 3 -1 - 3 - FINISH





GREEN FLEET SAILING INSTRUCTIONS
USA Junior Olympic Sailing Festival
3-4 December 2016
US SAILING Center of Martin County



Opti Class Philosophy: USODA is a teaching class and GREEN FLEET is its introductory fleet for novice sailors. The Rules of Sailing are important and taught, but learning to race while having fun is equally stressed. These sailing instructions are structured within The Racing Rules of Sailing to provide a flexible, less structured and less formal racing environment. Green Fleet is not scored, all participants receive participation awards. While race placement and progress may be tracked, who places first is less important than learning, improving and having fun along the way. Parents and competitors who are looking for a more competitive environment should consider the red, white and blue racing divisions.

1 RULES

- 1.1 The regatta will be governed by the rules as defined in *The Racing Rules of Sailing*.
- 1.2 “Conditions for USODA Events”, including the USODA ‘Code of Conduct’, will apply, and can be found at www.usoda.org. Competitors, Coaches, Parents, and Guardians shall abide by the USODA ‘Code of Conduct’. This includes behavior both on and off the water including respect for all other persons, personal property of others, USSCMC, and the City of Jensen Beach

2 NOTICES TO COMPETITORS

Notices to competitors will be posted on the official green fleet notice board located on the upper deck of the Sailing Center.

3 CHANGES TO THE SAILING INSTRUCTIONS

- 3.1 Any change to the sailing instructions will be posted on the official notice board by the end of the competitors meeting each day.
- 3.2 The race committee may change the sailing instructions on the water by hoisting flag L with one sound and hailing the change by loud hailer.

4 SIGNALS MADE ASHORE

- 4.1 Signals made ashore will be displayed from the flag pole near the end of the main dock.
- 4.2 AP displayed ashore means “Racing is postponed, do not leave the beach.” When AP is displayed ashore, ‘1 minute’ is replaced with ‘not less than 15 minutes’ in Race Signal AP.

5 COMPETITORS’ MEETING

- 5.1 The competitors’ meeting for Green Fleet will be held at 1030 on Saturday 3 December 2016 at Regatta Headquarters. Attendance is mandatory. It is not necessary that Green Fleet competitors’ attend the meeting for all other classes which will be held at 1000.

6 SCHEDULE OF RACING

The schedule is as follows:

Friday, December 2	1600-1800	Competitor Check-in and Coach/Spectator Flag Check-in
Saturday December 3	0800	Continental Breakfast
	0800-1000	Competitor Check-in and Coach/Spectator Flag Check-in
	1030	Competitors Meeting (Green Fleet Only)
	1100	First Warning
	After Racing	Cook out & Free Raffle for competitors on deck
Sunday, December 4	0800	Continental Breakfast
	0900	Competitors Meeting (Green Fleet Only)
	1000	First Warning
	1430	No warning after this time
	After Racing	Participation Awards Ceremony

The schedule may change based on conditions and the requirements of the sailors. Watch the notice board for information.

7 CLASS FLAG

The class flag will be a Green flag with the OPTI logo.

8 RACING AREA

The racing area will be announced at the Green Fleet meeting. This may change each day based on conditions.

9 THE COURSES

The courses will be as shown on the course diagram.

10 MARKS

Primary marks will be red round inflatable. Start and finish marks will be yellow.

11 THE START

11.1 Races will be started according to rule 26 (5-minute sequence). The starting line will be between a staff displaying an orange flag and the nearby inflatable mark.

11.2 The race committee may place an orange ball near the center of the starting line for use as a guide. The ball is not part of the starting line and is not a mark of the course. There is no penalty for touching it.

12 CHANGE OF THE NEXT LEG OF THE COURSE

The race committee will make slight adjustments to the course by dragging the original marks.

13 THE FINISH

The finish line will be between a staff displaying a orange flag and the nearby inflatable mark.

14 PENALTY SYSTEM

The penalty system described in rule 44.1 and 44.2 is changed so that only one-turn, including one tack and one jibe is required. This changes rule 44.1.

15 PROTESTS AND REQUESTS FOR REDRESS

Green Fleet is not scored. Protests are teaching opportunities. The hearing will be open to all competitors, parents, and coaches. An expedited hearing procedure in accordance with Appendix T Section C will be used.

16 SCORING

Green Fleet is not scored. All participants receive participation medals. While placement and progress may be tracked, who places first is less important than learning and improving, and having fun along the way.

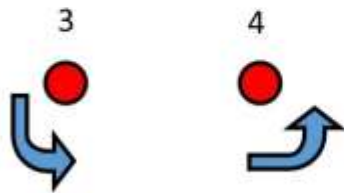
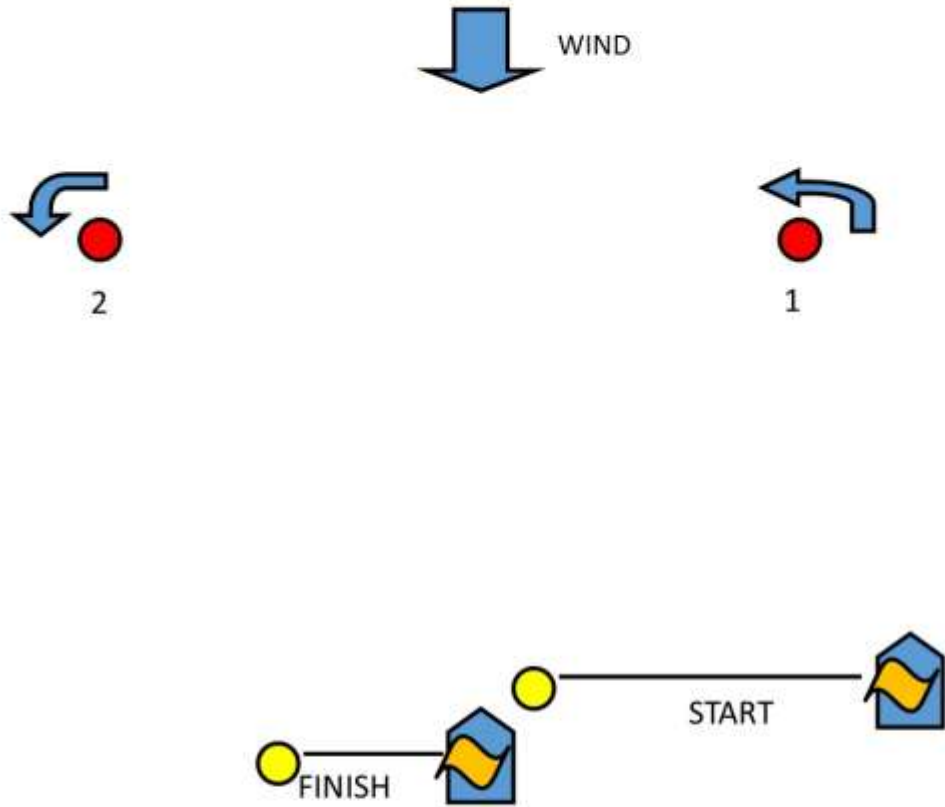
17 COACHING

Coaching is allowed at the discretion of the race committee. Coaching should focus on the bottom half of the fleet. Individual coaching is not allowed, coaching on the water is for all and all coaches are required to assist all sailors. All coaches are required prominently display their coach flag and number and to have VHF radios on and operating on the Green Fleet race committee channel at all times with racing is underway. The race committee has the right to remove from the Green Fleet course any coach who disregards the instructions of the race committee.

18 SAFETY

- 18.1 Competitors shall wear a personal floatation device at all times while on the water. The PFD shall be approved by the USCG or by the appropriate government agency of the competitor's permanent country of residence. This changes RRS 40.
- 18.2 Competitors shall check in with the Signal boat by sailing, or being towed, past the transom and hailing their sail number. No competitor is to leave the sailing area without notifying the Race Committee. All competitors shall be accompanied by a support boat when returning to the sailing center.
- 18.3 All competitors must comply with the onshore regatta safety sign in/out system.

**2016 US Sailing Junior Olympic Festival
Green Fleet Course Diagram**



Green Course: START - 1 - 2 - 3 - 4 - FINISH





**SAILING INSTRUCTIONS
USA Junior Olympic Sailing Festival**

O'Pen Bic

3-4 DECEMBER 2016

US SAILING Center of Martin County
1955 NE Indian River Drive Jensen Beach, Florida



Important Event Introduction: The purpose of this event is to run a fun event for youth sailors in a loosely competitive style in dynamic junior boats. Results are not nearly as important as everyone having a good time sailing. It is our goal that everyone improves their skills, makes new friends, and has a ton of fun. This event will be a combination of "conventional" style race formats with unorthodox "Un-Regatta" style courses and events. Don't expect conventional round the buoys racing or upwind starts for all races. Capsizes, freestyle, speed and fun will be required. If you are a hard-core racer with rule book in hand, this event may not be for you. If you want to have fun and pioneer a new chapter in Youth Sailing..... game on!

1 Rule Number One:

All sailors are required to participate in the spirit of fun at all times. Violators of Rule Number One may be publicly embarrassed.

2 Other Rules:

- 2.1** The "conventional" style races will be governed by rules with the following priority: these Sailing Instructions and subsequent Changes to Sailing Instructions, the O'Pen BIC Class Rules as modified by these Sailing Instructions, and the Racing Rules of Sailing 2013-2016 as modified by these Sailing Instructions. In the event of a conflict between these Sailing Instructions and the Notice of Race, these Sailing Instructions will take priority.
- 2.2** Those events run "Un-Regatta" style, will include these special rules:
- 2.2(a)** Expect unconventional courses and starting procedures. On different legs of the course there may be required moves signaled by loudhailer from the Judges. Depending on the conditions, these may include stand-up sailing, required capsizes (mast tip must hit the water), 360 degree turns, or other freestyle moves.
- 2.2(b)** When capsizes or freestyle moves are required, you must make sure you are clear of all other sailors when you make the maneuver, and don't interfere with or immediately obstruct other sailors. Capsizing or freestyling into another boat is NOT ok.
- 2.2(c)** Competitors shall remain on or near their vessels at all times. In other words, no "boarding" other boats unless required.
- 2.2(d)** There may be a Freestyle Expression Session that will be scored separately. Sailors will compete in three-minute heats that will be subjectively judged by the Panel of Undistinguished Judges. Be creative and have fun with it.

3 Notices to Competitors

3.1 Notices to competitors will be posted on the official notice board at USSCMC.

4 Changes to Sailing Instructions

4.1 Any change in the Sailing Instructions will be posted before 0830 on the day on which it will take effect. Changes to the schedule of races will be posted before 1830 on the day before the change is to take effect

5 Signals made ashore

5.1 Signals made ashore will be displayed on the flagpole at the end of the dock at Regatta Headquarters. Flag "AP" (Answering Pennant) with two sounds, means: "The racing is postponed. Do not leave the harbor." The first warning signal will be displayed not less than 30 minutes after "AP" is lowered (one sound).

6 Schedule of Races

6.1 Twelve races per class are scheduled; one race per class constitutes a regatta.

6.2 The schedule is as follows:

Friday 2 Dec	1600-1800	Early check-in
Saturday 3 Dec	0800	Continental Breakfast
	0800 -1000	Competitor Check-in and Coach/Spectator Flag Check-in
	1000	Competitors' Meeting (RWB OPTI, 420/Laser/O'Pen Bic
	1030	Competitors' Meeting (Green Fleet)
	1130	First Signal
	1700	Cook out & Raffle at the USSCMC
Sunday 4 Dec	0800	Continental Breakfast
	0930	First Signal, all classes
	1430	No warning after this time
		Awards - as soon as practical after racing

7 Marks (*Marks will be described in skippers meeting*)

7.1 The turning marks of the course will be yellow or Orange marks.

7.2 Starting line will be between a staff displaying an orange flag on the Race Committee signal boat and either a Starting Mark or a staff displaying an orange flag on a race Committee boat at port end.

7.3 The finish line will be between a staff displaying an orange flag on the Race Committee signal boat and either a Finish Mark or a staff displaying an orange flag on a race Committee boat.

- 7.4** Minor contact of the marks of the course is permitted. Contact that causes any damage, or the location of the mark to change or drag, is not permitted.
- 7.5** Hitting the Race Committee boat, start boat, or finish boat is always prohibited.

8 Starting procedures

- 8.1** Unless otherwise described, races will be started using a three minutes audible start sequence as follows.
- 3 minutes to start: 3 long sound signals and rising of Class Flag
 - 2 minutes to start: 2 long sound signals and rising of Preparatory Signal
 - 1 ½ minutes to start: 1 long and three short sound signals
 - 1 minute to start: 1 long sound signal and lowering of Preparatory Signal.
 - 30 seconds to start: 3 short sound signals
 - 20 seconds to start: 2 short sound signals
 - 10 seconds to start: 1 short sound signal
 - 5-4-3-2-1 seconds to start: 1 short sound signal counting down to start
 - Start: 1 long sound signal with lowering of the Class Flag
- 8.2** Individual and General Recalls will be signaled in accordance with RR#29.

9 Kinetics

- 9.1** Pumping and ooching (ISAF Rule 42) are prohibited unless "O" flag is being displayed from the Race Committee boat. If "O" flag is being displayed, then pumping and ooching are permitted.

10 Protests

- 10.1** It is the responsibility of every competitor to sail in a manner that is fair and with due respect of their fellow competitor, so that the results are a valid reflection of true sailing ability. Absolutely no intentional contact is permitted.
- 10.2** Regardless of whether a penalty is called by the umpires or not, competitors are expected to exonerate themselves of any rule infraction by completing one 360 degree turn for each infraction. One tack and one jibe in any order is required to complete a 360 degree turn. Competitors are encouraged to enforce the rules amongst themselves in a sportsman like manner by politely hailing "protest".
- 10.3** Penalties may be given on the water by hail from the Judges for violating any Sailing Instructions or rules. These may take the form of requiring one or more 360 degree penalty turns. All determinations and decisions of the Judges are final.
- 10.4** Hitting a mark is not grounds for protest (see SI #7.4)
- 10.5** There will be no formal protest hearings.

11 Scoring

- 11.1** One discard score will be calculated for every four races completed.
- 11.2** One completed race shall constitute a regatta.
- 11.3** Awards will be given to the top three finishers of the O'pen Bic class.

12 SAFETY AND CHECK-OUT / CHECK IN-PROCEDURES

- 12.1** Competitors who are US citizens or US residents must wear a US Coast Guard approved personal flotation device (PFD), properly secured at all times, from dock to dock except when temporarily adding or removing

clothing. Competitors who are citizens or residents of another country shall wear either a US Coast Guard approved PFD or a PFD approved by the country of their citizenship or residence, properly secured at all times, from dock to dock except when temporarily adding or removing clothing. Wet suits, dry suits and inflatable PFD's do not constitute adequate personal buoyancy. Failure to do so is protestable only by Race Committee.

- 12.2** If any boats have finished a race before the onset of foul or threatening weather and the Race Committee determines to clear boats from the water, the RC signal boat will blow three (3) horns and display Code Flag "H" at which time all remaining boats racing shall immediately abandon the race and go ashore. The Chief Judge may either score any boats not finished or order the race abandoned.
- 12.3** A boat that withdraws or retires for any reason shall inform the RC of their intention for that race and any other scheduled races, or, when that is impossible, immediately upon arriving ashore. Failure to do so may result in disqualification from subsequent races that day.
- 12.4** Each boat shall check in with the Race Committee boat displaying Code Flag "L" before the first race of each day.
- 12.5** Each competitor will receive a numbered wrist band upon check-in that corresponds to their assigned boat spot and Safety Sign Out/In Board. Every competitor **must** have their wrist band with them while sailing and must be able to show their wrist band if asked by the Race Committee. Immediately upon returning to shore the wrist band must be placed on the Safety Board located on the ground level on the east side of east stairs at Regatta Headquarters. Competitors who do not return their bands to the Safety Board within 45 minutes of the posted Signal Boat dock time will be reported to the Protest Committee for action which may result in a scoring penalty of 10%.
- 12.6** Competitors who lose their wristband shall personally check-in with the safety attendant prior to the expiration time noted in SI 16.6. The safety attendant will be found at the Safety Board.
- 12.7** Competitors may not sail without a wristband. Lost wrist bands must be replaced to continue racing.
- a. Replacement wrist bands will cost \$5
 - b. Replacement wrist bands will be available at the scorer's table located in the center office on the second floor of Regatta Headquarters.
- 12.8** A competitor retiring from a race shall notify a Race Committee boat or safety boat before leaving the course, and notify the Race Committee immediately upon returning to shore at which time the competitor's wristband should be hung up on the Safety Board.
- 12.9** Helmets are strongly recommended, particularly in wind speeds over 10mph.
- 12.10** Special care must be taken to avoid contact with other sailors, including when special maneuvers are required. Pay particular attention to leaving enough room so your boom or mast tip does not hit another competitor.

13 Decision to Race & Disclaimer of Liability

The responsibility for a competitor's decision to participate in a race or to continue racing is hers alone (RR4). Competitors participate in the regatta entirely at their own risk. USSCMC, BIC Sport, the O'Pen BIC Class, and all organizers,

volunteers, and race officials of this event will not accept in any case any liability for material damage or personal injury or death sustained in conjunction with or prior to, during, or after the competition. Before entering this event, a signed waiver will be required as well as publicity/media releases.

14 When all else fails, refer to Rule Number 1.

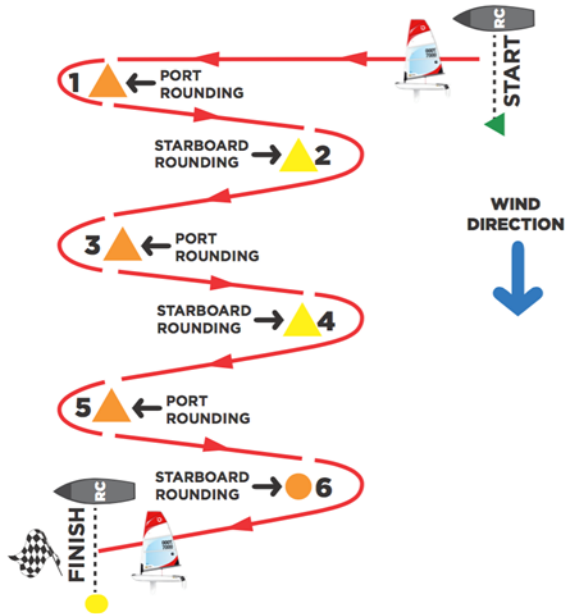
WARNING: Extreme levels of fun may be experienced during this event. Other sailing craft may appear less exciting after experiencing the O'Pen BIC.

Junior Olympic Sailing Festival

O'Pen Bic Courses

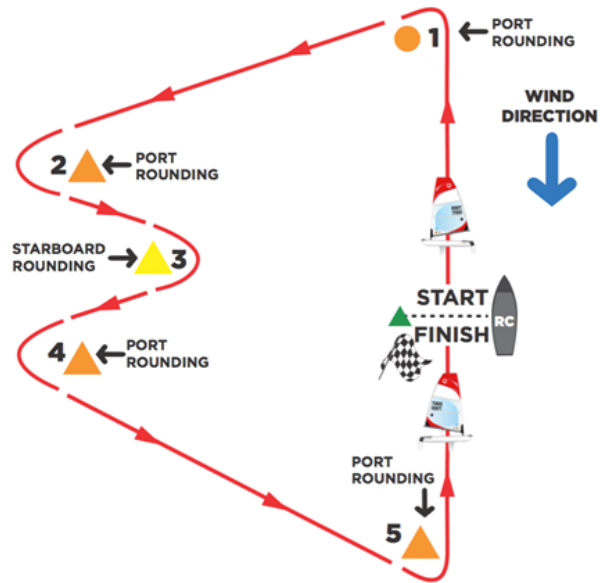
S-6

START, 1P, 2S, 3P, 4S, 5P, 6S, FINISH



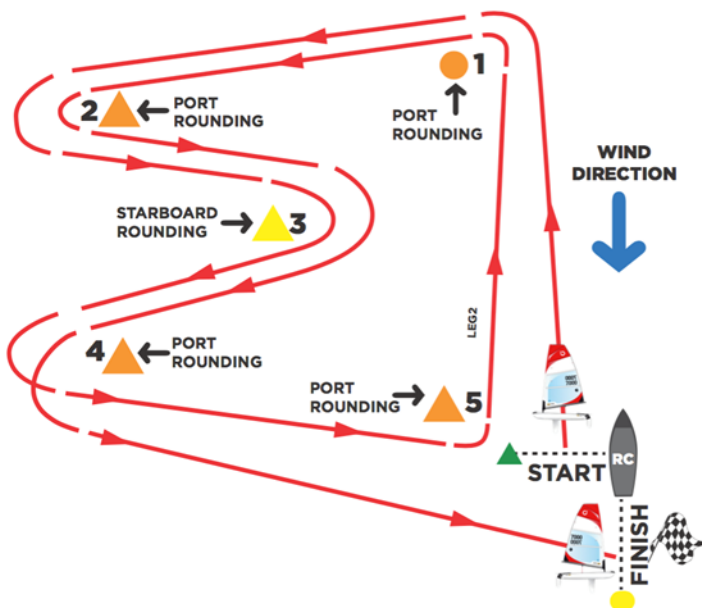
T-S

START, 1P, 2P, 3S, 4P, 5P, FINISH



G-2

START, 1P, 2P, 3S, 4P, 5P, 1P, 2P, 3S, 4P, FINISH



G

START, 1P, 2P, 3S, 4P, FINISH

