

Women's, Junior and Master  
Lightning North American Championship  
10-14 August 2016

Rochester Yacht Club  
5555 St. Paul Blvd.  
Rochester, New York 14617 USA  
[www.rochesteryc.com](http://www.rochesteryc.com)  
<http://www.regattanetwork.com/event/11588>

## NOTICE OF RACE

February 16, 2016

### 1 RULES

1.1 The regatta will be governed by the rules as defined in *The Racing Rules of Sailing* (RRS). The prescriptions of US Sailing, including Appendix T Section B and D will apply and will be posted on the official notice board during the regatta.

1.2 The organizing authority (OA) is the ILCA and Rochester Yacht Club.

1.3 The International Lightning Class Association (ILCA) By-Laws and "[Document Governing All Sanctioned Lightning Class Championships](#)" hereinafter referred to as the "Document

Governing” will apply.

1.4 The rules identified below will be changed and will appear in full in the sailing instructions. The sailing instructions may also change other racing rules.

1.4.1 RRS 27.3 is changed to add the following: “The RC or OA shall not abandon (or cancel) a scheduled race, or races, before the starting signal without approval of the Class Governing Authority.

1.4.2 RRS 42.3(c) is changed to read: “Except on a beat to windward, when surfing (rapidly accelerating down the front of a wave) or planing is possible, the boat’s crew may pull the sheet only, (not the guy), in order to initiate surfing or planing, but each sail may be pulled only once for each wave or gust of wind. When the mainsail is pumped, only that part of the sheet between the crew member handling the sheet and the first block on the boom shall be used.”

1.4.3 RRS 44 is changed to add the following: “The two turns penalty as provided in RRS Rule 44 will apply with the additional provision that when an infringing yacht has its spinnaker drawing at the time of the infringement, drops it completely while taking her penalty, and resets it immediately and has it drawing after the penalty, the penalty is one full turn instead of two.”

## **2. ADVERTISING**

2.1. Advertising shall be in accordance with ISAF Regulation 20 except that it shall be restricted to the hull only in accordance with Article VIII (2) of the Document Governing.

## **3. ELIGIBILITY AND ENTRY**

3.1 The Women’s Lightning North American Championship is open to all female sailors (skipper and crew).

3.2 The Junior Lightning North American Championship is open to all eligible sailors (skipper and crew) who will not reach their twenty first (21st) birthday on or before 12/31/16. Each Junior entrant must submit a signed Junior Medical Emergency Form and Junior Competitors Agreement.

3.3 The Master Lightning North American Championship is open to all eligible skippers who will reach their fifty-fifth (55th) birthday on or before 12/31/16. The minimum combined age of the skipper and crew, as of 12/31/16, is 130 years.

3.4 All skippers must be ILCA Life, Active, or Associate members in good standing. All crew must be ILCA Members. Master & Junior participants must show a photo ID, or proof of age, at registration.

3.5 At registration, each competitor (or parent/guardian if under 18) will be required to sign a waiver for loss, damage or injury to persons or property incurred in conjunction with the regatta, on the property of RYC, or on the water, or during participation in any individual race of the regatta, or from the actions of the ILCA, its officers, the protest committee, the race management team, organizing committee and any sponsors of the Regatta and their members, officers, governors and agents, from liability for such damage or injury.

3.6 Eligible boats may enter the Regatta by completing the registration form and paying the registration fee(s) by 1800 on Wednesday August 10, 2016. Registration is online at Regatta Network, web site: <http://www.regattanetwork.com/event/11588>.

#### 4. FEES

4.1 The entry fee is \$175 USD for Women's & Master and \$100 for Junior. A late fee of \$25 USD will also be charged for payments received after July 10, 2016.

WJM Competitors will receive:

- Continental breakfast each morning
- Welcome Social Thursday evening
- Soft drinks, Beer and snacks after racing on Friday and Saturday
- Friday evening Seabreeze Amusement Park activity (additional fee)
- Saturday RYC cookout
- Awards and refreshments Sunday afternoon
- Launch/Haul on RYC premises
- Onsite car and trailer parking
- Awards and Prizes
- Support boat dockage
- Full guest privileges at RYC, including all on site dining and bar services. RYC guest cards will be available with your credit card.

#### 5 SCHEDULE OF EVENTS

##### 5.1

Day	Date	Event	Time
Wed	10 Aug	WJM Registration, Check-in and Measurement	1500-1800
Thurs	11 Aug	WJM Registration, Check-in and Measurement	0900-1600
		WJM Practice Race	1500
		Competitors Meeting @ RYC Burgee Bar	1800
		Welcome Social	
		Pizza and Volleyball (Juniors)	
Fri	12 Aug	Continental Breakfast	0730-0830
		WJM Competitors Meeting @ RYC Burgee Bar	0830
		Racing	first warning at 1000
		Social event (refreshments served at Burgee Bar)	After Racing
		Daily Awards	10 minutes after drop of "B" flag
		Offsite Seabreeze Amusement Park Event	

Sat	13 Aug	Continental Breakfast	0730-0830
		WJM Competitors Meeting @ RYC Burgee Bar	0830
		WJM Racing	first warning at 1000
		Social event (refreshments served at Burgee Bar) Daily Awards RYC Cookout	After racing 10 minutes after drop of "B" flag
Sun	14 Aug	Continental Breakfast	0730-0830
		WJM Competitors Meeting @ RYC Burgee Bar	0830
		WJM Racing	first warning at 1000
		No Warning signal after	1400
		WJM Final Awards/Social event	1700 @ Burgee Bar

## 6. MEASUREMENT

6.1. Each boat shall hold and produce a valid Measurement Certificate at measurement and must display a current ILCA membership decal. Boats, sails, and equipment may be measured and inspected in accordance with the Lightning Class By-Laws.

6.2. All sails shall have Official ILCA Royalty Labels. Mainsail and spinnaker numbers shall be the same. Spinnaker numbers shall be of a sufficiently contrasted color so as to make sail number identification possible.

6.3. Competitors are advised that the Chief Measurer or a designated representative may make spot measurements and inspection of required equipment during the Championships.

## 7. SAILING INSTRUCTIONS

7.1 The sailing instructions will be available no later than 01 August 2016 online at the event web site and will be available at RYC during registration and check-in times.

## 8. VENUE AND THE COURSES

8.1 Courses will be windward/leeward, triangle or windward/leeward/triangle courses that may include an offset mark and a gate, as described in further described in the sailing instructions.

8.2 Attachment A shows the location of the Rochester Yacht Club, and the racing area on Lake Ontario near the mouth of the Genesee River.

## 9 PENALTY SYSTEMS

9.1 As described in NoR 1.4.

## 10 SCORING

10.1 The low point system of RRS Appendix A will apply.

10.1.1 When fewer than six (6) races have been completed, a boat's series score will be the total of her race scores. This changes RRS A2.

10.1.2 When six (6) or more races have been completed, a boat's series score will be the total of her race scores excluding her worst score.

10.2 A maximum of 8 (eight) races is scheduled for the Women's and Junior Divisions and 6 (six) races for the Master Division, of which one shall be completed to constitute a series.

## **11 SUPPORT BOATS**

11.1 Support and coach boats must register at the Race Office during the check-in period.

11.2 During racing, support boats shall monitor the race committee VHF channel and assist with safety issues when asked by the race committee.

11.3 Support boats will comply with additional operating instructions provided during registration in accordance with *Document Governing*.

## **12 BERTHING**

12.1 Boats shall be kept in the designated areas on premise at Rochester Yacht Club.

12.2 Specific berths may be assigned at check-in.

## **13 RADIO COMMUNICATION**

13.1 Use of hand held VHF radios will be permitted for communication from the Race Committee to competitors on a predetermined channel to be identified in the Sailing Instructions. The Race Committee intends to use VHF radio to identify OCS (On Course Side of the line) boats after starts and otherwise communicate with the fleet on the water. Failure to receive a hail, for a hail to be made, the order of hails made, or receive other communications to the fleet shall not be cause for redress.

13.2 Other use of any communication devise is prohibited and such use shall require withdrawal from the race unless determined by the Race Committee to have been for emergency purposes. Failure to receive a hail, for a hail to be made, the order of hails made, or receive other communications to the fleet shall not be cause for redress.

## **14. PRIZES**

14.1 Prizes will be awarded to top placing skippers and crews in each of the fleets.

14.2 Perpetual Trophies will be presented to the North American Champion in the Women's, Junior, and Master fleets.

14.2.1 The highest placing skipper who has reached his or her 65th birthday by Dec. 31, 2016 shall win the Grand Master trophy

14.2.2 The highest placing skipper who has reached his or her 75th birthday by Dec. 31, 2016 shall Win the Great Grand Master trophy

## **15. DISCLAIMER OF LIABILITY**

15.1. Competitors participate in the regatta entirely at their own risk. See RRS 4, Decision to Race. The organizing authority will not accept any liability for material damage or personal injury or death sustained in conjunction with or prior to, during, or after the regatta.

## **16. INSURANCE**

16.1 Each participating boat shall be insured with valid third-party liability insurance with a minimum coverage of US\$300,000 per event or the equivalent. A copy of insurance company documents establishing that such coverage is current shall be produced if requested by the OA.

## **17 RACE OFFICIALS**

Protest Committee Chairman: Dr. Richard Sullivan (IJ-USA)

Race Committee PRO: Hank Stuart (IRO-USA)

## **FURTHER INFORMATION**

### **International Lightning Class Association**

Laura Jeffers - ILCA Executive Secretary

1528 Big Bass Drive

Tarpon Springs, Florida 34689

Email: [office@lightningclass.org](mailto:office@lightningclass.org)

Class Office Phone#: (727) 942-7969

Website: <http://www.lightningclass.org/>

### **Rochester Yacht Club – Organizing Authority**

5555 St Paul Blvd

Rochester, NY 14617 USA

Phone: (585) 342-5511

Fax: (585) 342-8116

Website: [www.rochesteryc.com](http://www.rochesteryc.com)

Club Manager: Mary Smith

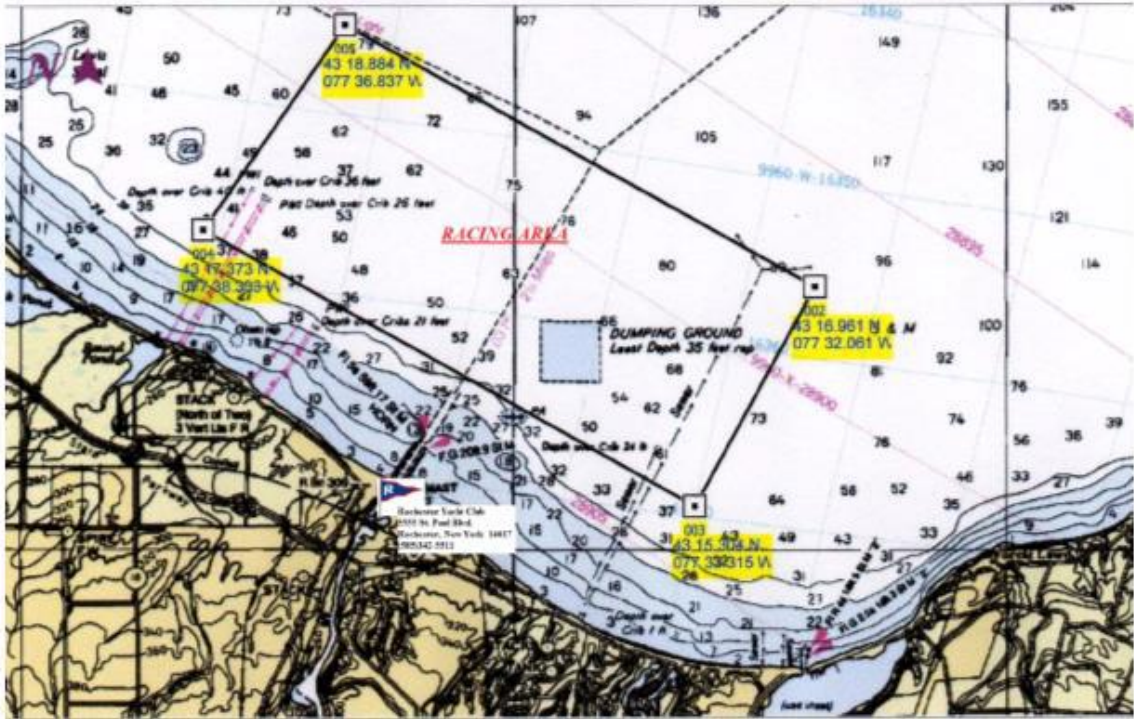
### **Regatta Chairman**

Cory Sertl

Email: [lightningnas2016@gmail.com](mailto:lightningnas2016@gmail.com)

**Regatta Website:** <http://www.regattanetwork.com/event/11588>

Attachment A  
Racing Area and Location of RYC Clubhouse



Not to be used for navigation