



TSC Two on Two Keelboat Team Race

SAILING INSTRUCTIONS

May 29, 2016 Memorial Day Weekend

Abbreviations:

PC – protest committee	RC – race committee
OA – organising authority	RRS – racing rules of sailing
SI – sailing instructions	NoR – notice of race

1 RULES

- 1.1 The event will be governed by
 - (a) the ‘rules’ as defined in the RRS, including Appendix D.
 - (b) the rules for Handling Boats (SI appendix C), which also apply to any practice sailing and sponsor races
- 1.2 The right of appeal will be denied in accordance with RRS 70.5 (a).
- 1.3 All races will be umpired.
- 1.4 Add to RRS 41: (e) help to recover from the water and return on board a crew member, provided the return on board is at the approximate location of the recovery.
- 1.5 When boats are provided by the OA they shall be deemed to conform to their class rules. When class rules change rule 42, such changes shall not apply.
- 1.6 Any prescriptions of the national authority that will apply will be posted on the official notice board.
- 1.7 Rule 14 shall apply at all times whether boats are racing or not.

2 ENTRIES and ELIGIBILITY

- 2.1 To remain eligible the entire crew shall complete registration in accordance with the Notice of Race, pay the entry fee by September 6 at 6:00 PM unless extended by the OA..

3 COMMUNICATIONS WITH COMPETITORS

- 3.1 Notices to competitors will be posted on the official notice board located at the Titusville Municipal Marina Ships Store.

4 AMENDMENTS TO SAILING INSTRUCTIONS

- 4.1 Amendments to the SI will be signalled by flying flag L from the shore signal station. Such changes will be posted on the notice board not less than 10 minutes before the warning signal of the first affected race.
- 4.2 Amendments made afloat will be signalled by the display of flag L on the committee vessel with three sound signals. An umpire may communicate these either verbally or in writing.

5 BOATS AND SAILS

- 5.1
 - (a) The event will be sailed in Geary 18 keelboats with helm and one crew.
 - (b) The boats to be sailed and the sails to be used will be allocated by the RC.
- 5.2 Spinnakers, trapezes and the gear specifically provided for their utilisation shall not be used.
- 5.3 The RC may require boats to reef their mainsails, in which case boats will be so informed by the umpires.
- 5.3 Other restrictions or instructions may be given to the boats verbally by an umpire. Flag L is not require

6 IDENTIFICATION and ASSIGNMENT OF BOATS

6.1 Boats will be identified by their sail number and their hull number.

7 EVENT FORMAT AND STARTING SCHEDULES

7.1 The event format is detailed in SI Appendix A.

7.2 The race schedule is detailed in SI Appendix B.

7.3 The RC may terminate any race or stage of the event when, in its opinion, it is impractical to attempt to hold the remainder of the races in the existing conditions or the time scheduled. Early stages may be terminated in favour of later stages. The decision of the RC shall be final and competitors shall not request redress in respect of such decision, changing RRS 62.

7.3 The format may be modified during the event as determined by the RC.

7.4 Taking into account the entries, weather conditions, time constraints and any other relevant factors, The decision of the RC shall be final and competitors shall not request redress in respect of such decision, changing RRS 60.1(b).

7.5 The schedule of races will be displayed on the official notice board. Any changes made and schedules for subsequent rounds will be displayed not less than 10 minutes before the start of that phase of the competition or after such other time as shall be specified in Appendix A.

7.6 Every race will be assigned a race number in the race schedule.

7.7 The race number will be displayed on the committee boat between the warning and preparatory signal for that race. The RC may at any time remove a particular race from the published sequence of races and run it at a later time.

7.8 The latest time for a warning signal on the last day of racing will be 3:00 PM.

7.9 The intended time of the first warning signal is 10:00 AM. Each subsequent race will be started as soon as practicable after the previous race.

8. CONTINUITY

Before starting and after finishing or retiring, boats shall sail to minimise any delay to the race schedule.

9. RACING AREA

The racing area will be the Indian River just outside of the Marina Breakwater next to Cracker Jacks Restaurant.

10 COURSE

10.1 The course configuration is set out in SI Appendix E.

10.2.1 The starting line will be a straight line between the course side of the starting/finishing mark and the mast or staff displaying an orange flag on the committee boat.

10.2.2 The finishing line will be a straight line between the course side of the starting/finishing mark and the mast or staff displaying an orange flag on the committee boat.

10.2.3 A buoy may be attached to the RC boat anchor line just below keel depth. Boats shall not pass between this buoy and the RC boat at any time. This buoy is part of the RC boat ground tackle

10.3.1 The starting/finishing mark will be a Orange Buoy and the race committee boat.

10.3.2 The course marks will be round orange buoys.

11 BREAKDOWN and TIME FOR REPAIRS

- 11.1 A boat may display a code flag “L” to signal a breakdown or damage to the boat or her sails or injury to her crew (adding to RRS D5.1). She shall proceed as soon as possible to close to leeward of the race committee boat and remain there unless otherwise directed.
- 11.2 Competitors are responsible for inspecting their boats before racing.
- 11.3 Competitors shall report any defects, damage or breakdown to the RC at the first reasonable opportunity.
- 11.4 When there is a risk of further damage if a boat continues racing after damage or breakdown, she shall retire immediately.
- 11.5 The PC shall decide redress in accordance with RRS D5 which is amended to that extent.
- 11.6 The PC may postpone a resail indefinitely and score each team half a race win unless the result is relevant to progress, but not seeding, in the next round.
- 11.7 The time allowed for repairs will be at the discretion of the RC.
- 11.8 Except where RRs 62.1 (b) applies, failure to effect repairs in the time allowed, will not be grounds for redress. This changes RRs 62.

12 STARTING PROCEDURE

- 12.1 Races will be started by using the following signals. Times shall be taken from the start of each sound signal; the failure or delay, of a visual signal, including flag X, shall be disregarded. This amends RRS 26.

<i>Signal</i>	<i>Minutes before starting signal</i>	<i>Sound</i>	<i>Alternative visual signals</i>	
Warning	3	One	Class flag up	3 battens
Preparatory	2	One	Flag P up	2 battens
One-minute	1	One	Flag P down	1 batten
Starting	0	One	Class flag down	No battens

- 12.2 When a boat is subject to RRS 29.1 flag X will not be displayed for more than 1 minute after the starting signal; this amends RRS 29.1. The RC will hail numbers of premature starters.
- 12.3 A series of short sound signals will be made to advise competitors a warning signal is imminent.

13 CHANGE OF POSITION OF MARKS

- 13.1 There will be no changes of the position of a mark after the start of a race of a race. This amends RRS 33

14 TIME LIMIT

- 14.1 There shall be no time limit for races. However the race committee may abandon a race for any reason. This amends RRS 32.

15. PROTESTS

- 15.1 Protests and requests for redress that deal with scoring and other matters that do not arise from incidents in the racing area shall be notified to the race office within 30 minutes after the finish of the last boat in the last race of the day. However boats are required to notify the race officer as soon practicable.
- 15.4 The PC may refuse to hear a protest or request for redress unless its outcome is relevant to progress to, but not seeding in, the next round of the competition. This amends RRS 63.1.
- 15.5 When the race umpires together with one other umpire (when available) decide that a boat has broken rule 14 and there is damage or injury, they may penalise her team by half a race win without a hearing. The boat will be informed as soon as practical and may request a hearing. Any penalty after a hearing will be in accordance with RRS D3.1(d). This amends RRS 63.1.

15.6 When a competitor breaks SI Appendix C 2.2, or 2.3, the competitor's team will be penalised one race win without a hearing. This amends RRS 63.1.

15.7 When the PC decides that a breach of a rule has had no significant effect on the outcome of a race, it may make any arrangement it decides is equitable, which may be to order a resail or to impose no penalty. This amends RRS 64.1 and D3.1.

16. SAFETY

16.1 An adequate personal flotation device shall be worn at all times whilst afloat.

16.3 Any participant suffering a blood injury (i.e. an injury that draws blood) shall report the matter to the race committee immediately. The RC may require that person to proceed ashore to receive first aid.

17 CODE of CONDUCT

Competitors shall comply with any reasonable request from any official, including attendance at official functions, and shall not behave so as to bring the event into disrepute. The penalty for breaking this sailing instruction is at the discretion of the Protest Committee and may include exclusion from further participation in the event, the withdrawal of any prize money or the withholding of deposits.

SI APPENDIX A – EVENT FORMAT

1 The regatta format and number of races will be determined by the OA, Principal Race Officer (PRO), and chief umpire and will be based on the number of teams registered and the weather conditions.

2 The format to be sailed is described in SI Appendix D. The starting order of teams and the boat rotation will be posted on the Official Notice Board.

3 The OA, PRO, and chief umpire may terminate or alter the format in progress, and institute arrangements to conclude the championship and determine a winner. If time, wind, weather, or other contingencies make the completion of a current or an additional scheduled round robin or stage impractical, the regatta may be terminated and the results based on the standings at the completion of the immediately preceding round robin(s) or stage. This changes D4.2(a).

4 The race committee may decide not to run a re-sail if the result of that race is not relevant to the progress of any team in the event.

SI APPENDIX B – RACE SCHEDULE

7.1 Sunday September 7 - 0830 Competitor Check-in

7.2 The race committee may set a practice course and run practice starts from approximately 1600 until 1730 Saturday 6, September at the conclusion of the USMRC Qualifier event.

After Racing Umpire/Competitor Debriefing

Sunday, September 7 - 0830 Competitor Briefing

1000 First Warning

After Racing Umpire/Competitor Debriefing

SI APPENDIX C - HANDLING BOATS

1 GENERAL

While all reasonable steps are taken to equalise the boats, variations will not be grounds for redress. This changes RRS 62.

2 PROHIBITED ITEMS Except in an emergency or in order to prevent damage or injury, or when directed by an umpire otherwise, the following are prohibited.

2.1 Any additions, omissions or alterations to the equipment supplied. In particular the cutting or shortening of any sheets, control lines or other running rigging.

2.2 The use of any equipment for a purpose other than that intended or specifically permitted.

2.3 The replacement of any equipment without the sanction of the RC.

2.4 Sailing the boat in a manner that it is reasonable to predict would cause significant damage.

2.5 Moving equipment from its normal stowage position except when being used.

2.8 Hauling out a boat or cleaning surfaces below the waterline.

2.10 Attaching lines to the fabric of spinnakers.

2.11 Perforating sails, even to attach tell tales.

2.13 Adjusting or altering the tension of standing rigging, excluding the backstay.

- 2.14 Using a winch to adjust the mainsheet, backstay or vang.
- 2.15 Using a reef line as an outhaul.
- 2.17 Omitting any headsail car or turning block before sheeting onto a winch.
- 2.18 The use of electronic instruments other than compass and watches.
- 2.22 The use of the shrouds (including any inner shrouds) above the lower bottle screw (turnbuckle) to facilitate tacking or gybing, or to aid the projection of a crew member outboard.
- 2.23 A breach of SI Appendix C 2.24 is not open to protest by boats but may be subject to action by Umpires. This changes RRS D2.2(d) and 60.1

3 PERMITTED ITEMS and ACTIONS

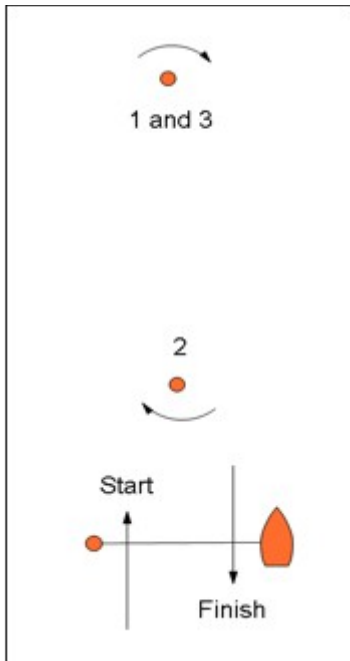
The following are permitted.

3.1 Taking on board and making appropriate use the following equipment :

- (a) basic hand tools consisting of knife, pliers and screwdrivers but excluding hammers and saws.
- (b) adhesive tape
- (c) line (elastic or otherwise of 4 mm diameter or less)
- (d) tell tale material
- (e) notebook
- (f) watch, timers and hand held compass
- (g) shackles and clevis pins
- (h) Velcro tape

SI APPENDIX D – COURSE CONFIGURATION

Typical Courses:



Normal Course



Short Course Code Flag "S"