



One Design Midwinter Regatta  
March 18-20, 2016  
Sailing Instructions

## 1 RULES

The regatta will be governed by the rules as defined in The Racing Rules of Sailing. If there is a conflict between the NOR and the Sailing Instructions, the Sailing Instructions will take precedence.

## 2 NOTICE TO COMPETITORS

Notices to competitors will be posted on the official notice board located on the pavilion on the north side of the club.

## 3 CHANGES TO SAILING INSTRUCTIONS

Any change to the sailing instructions will be posted on the day it will take effect, except that any change to the schedule of races will be posted by 1900 on the day before it will take effect.

## 4 SIGNALS MADE ASHORE

- 4.1 Signals made ashore will be displayed at the flagpole in front of the clubhouse.
- 4.2 When flag AP is displayed ashore, "1 minute" is replaced by "not less than 60 minutes" in the race signal. This changes Race Signal AP.

## 5 SCHEDULE

### Friday, March 18, 2016

900-1000 Registration

1030 Skippers meeting-Albacore, Daysailors & MC Scow

1200 Warning Signal for first race of the day

### Saturday, March 19, 2016

900-1000 Registration

1030 Skippers Meeting (all other fleets)

1130 Warning Signal for first race of the day

Dinner to Follow Racing

### Sunday, March 20, 2016

1030 Warning Signal for first race of the day

1400 No new races to start after this time

Awards to Follow Racing

## 6 CLASS FLAGS

The class flags are described in Attachment 1.

## 7 RACING AREA

The racing areas are described in Attachment 2.

## 8 THE COURSES

- 8.1 The diagrams in Attachment 2 show the courses, including the approximate angles between legs and the order in which marks are to be passed and the side on which the mark is to be left.
- 8.2 If no windward offset mark is set, boats shall sail directly from the windward mark to the leeward mark(s) or finish.

- 8.3 If a single leeward mark is set instead of a gate, the mark shall be left to port.

## 9 MARKS

Marks are described in Attachment 1.

## 10 THE START

- 10.1 The starting line will be between a staff displaying an orange flag on the race committee signal boat at the starboard end and the course side of the port end starting mark.
- 10.2 Boats whose warning signal has not been made shall avoid the starting area during the starting sequence for other races.
- 10.3 A boat starting later than 4 minutes after her starting signal will be scored Did Not Start without a hearing. This changes rule A4.

## 11 CHANGE TO THE NEXT LEG OF THE COURSE

To change the next leg of the course, the race committee will lay a new mark (or move the finishing line) and remove the original mark as soon as practical. When in a subsequent change a new mark is replaced, it will be replaced by the original mark.

## 12 THE FINISH

The finishing line will be between a staff displaying an orange flag on the race committee signal boat and the finishing mark.

## 13 PENALTY SYSTEM

Rule 44.1 is changed so that the TWO-Turns Penalty is replaced by One-Turn Penalty.

## 14 TIME LIMIT

Boats failing to finish within 30 minutes after the first boat in their class sails the course and finishes will be scored Did Not Finish without a hearing. This changes RRS 35, A4 and A5.

## 15 PROTESTS AND REQUESTS FOR REDRESS

- 15.1 Protest forms are available outside the Club Office. Protests, requests for redress and reopening shall be delivered there within 60 minutes after the race committee signal boat docks. The docking time will be posted on the Official Notice Board.
- 15.2 Notices will be posted no later than 30 minutes after the protest time limit to inform competitors of hearings in which they are parties or named as witnesses. Hearings will be held in the club office beginning at the time posted.
- 15.3 Notices of protests by the race committee or protest committee will be posted to inform boats under rule 61.1(b).



15.4 Breaches

of instructions 10.2 and 17 will not be grounds for a protest by a boat. Penalties for this breach may be less than disqualification if the protest committee so decides.

15.5 On the last scheduled day of racing a request for reopening a hearing shall be delivered (a) within the protest time limit if requesting party was informed of the decision the previous day (b) no later than 30 minutes after the requesting party was informed of the decision on that day. This changes rule 66.

15.6 On the last scheduled day of racing a request for redress based on a protest committee decision shall be delivered no later than 30 minutes after the decision was posted. This changes rule 62.2

**16 SCORING**

16.1 Once race is required to be completed to constitute a series.

16.2 (a) When fewer than 5 races have been completed, a boat's series score will be the total of her race scores. (b) When 5 or more races have been completed, a boat's series score will be the total of her race scores excluding her worst score.

**17 RADIO COMMUNICATION**

Except in an emergency, a boat shall neither make radio transmissions while racing nor receive radio communications not available to all boats. This restriction also applies to mobile telephones.

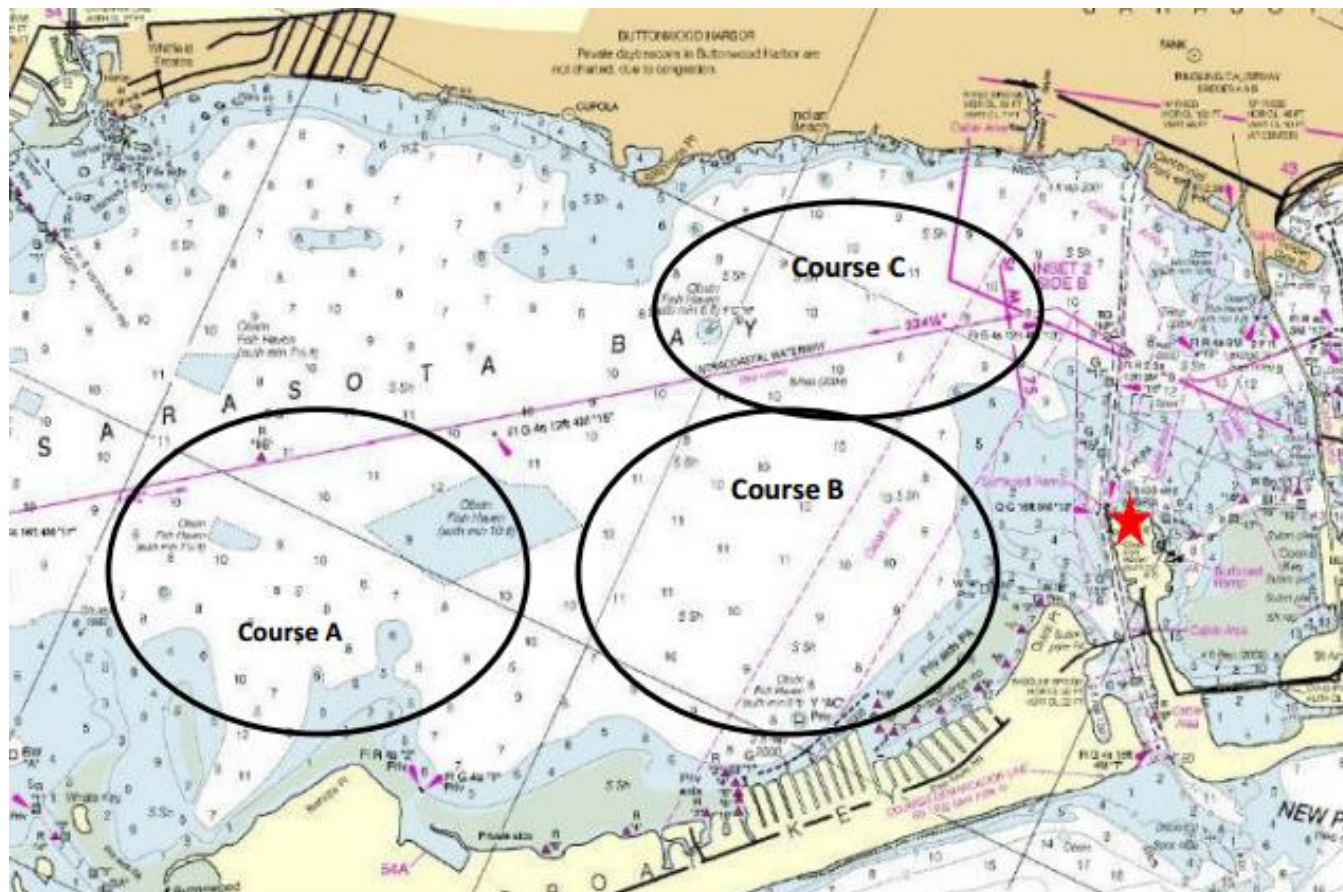
**18 PRIZES**

Prizes will be given to each crew placing first, second and third in each class with 5 or more entries.

**19 DISCLAIMER OF LIABILITY**

Competitors participate in the regatta entirely at their own risk. See RRS 4, Decision to Race. The organizing authority will not accept any liability for material damage or personal injury or death sustained in conjunction with or prior to, during, or after the regatta.

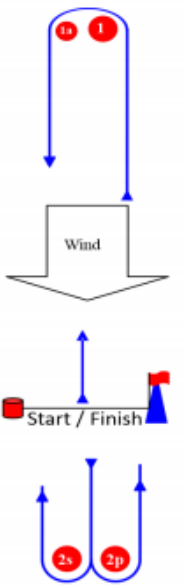
**Attachment 1 – Sailing Areas, Mark Descriptions, Class Flags**



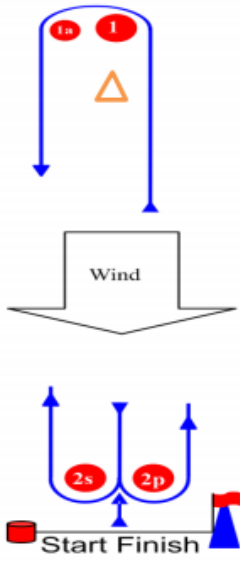

Course A	VHF Channel	Mark Descriptions	Class Flags
Albacore, Daysailors, Mutineer 15, Windmills	71	Course marks - Orange tetrahedrons Offset mark – Orange ball Start/Finish mark – Orange Tetrahedron Change mark – Green tetrahedron	Class flags will be described at the initial skipper’s meeting and the list posted on the Official Notice Board by 1000h on March 18 <sup>th</sup> .
Course B	VHF Channel	Mark Descriptions	Class Flags
E-Scow, Flying Scot, Windsurfers	70	Course marks – Yellow tetrahedrons Offset mark – Orange Ball Start/Finish mark – Yellow tetrahedron Change Mark – Green	Class flags will be described at the initial skipper’s meeting and the list posted on the Official Notice Board by 1000h on March 18 <sup>th</sup> .
Course C	VHF Channel	Mark Descriptions	Class Flags
MC SCOW Friday Only	71	Course marks - Orange tetrahedrons Offset mark – Orange ball Start/Finish mark – Orange Tetrahedron Change mark – Green tetrahedron	Class flags will be described at the initial skipper’s meeting and the list posted on the Official Notice Board by 1000h on March 18 <sup>th</sup> .

Attachment 2 – Course Illustrations

**COURSE M**

	<b>Windward leeward with offset, gate and mid start line</b>	
	<b>Possible courses</b>	
<b>Classes</b>	<b>Mark Rounding Order</b>	
<b>M1</b>	Start-1-1a-2s/2p-Finish	
<b>M2</b>	Start-1-1a-2s/2p-1-1a-2s/2p-Finish	
<b>M3</b>	Start-1-1a-2s/2p-1-1a-2s/2p-1-1a-2s/2p-Finish	

**COURSE W**

	<b>Windward/Leeward offset mark 1a with Downwind finish</b>	
	<b>Possible courses</b>	
<b>Signal</b>	<b>Mark Rounding Order</b>	
W1	Start-1-1a-Finish	
W2	Start-1-1a-2s/2p-1-1a-Finish	
W3	Start-1-1a-2s/2p-1-1a-2s/2p-1-1a-Finish	
	<b>For Short Windward leg (S)</b>	
S 1	Start -S - finish	
S2	Start- S-2s/2p-S -Finish	
S3	Start-S-2s/2p-S-2s/2p-S-Finish	
S Mark	S mark  White Tetrahedron	