

2016 Cleveland Race Week June 23 - 26, 2016
OFFSHORE SAILING INSTRUCTIONS



1. Rules

The regatta will be governed by the "rules" as defined in the Racing Rules of Sailing (RRS).

- 1.1 All boats shall check-in with the Race Committee boat displaying the "L" flag on their assigned race area at least five minutes before the first warning signal of the day. Each boat shall sail past the committee boat and hail her class and sail number until acknowledged by the Race Committee. Failure to check-in properly may result in a 20% scoring penalty for the first race of the day, applied as described in RRS 44.3(c). This modifies RRS A5.
- 1.2 Interference with Government and or Commercial vessels may result in protest by the Race Committee, changing RRS Rules A5, 35, 63.1 and 67.
- 1.3 US Sailing prescriptions to RRS 60, 63.2, 63.4 shall not apply.
- 1.4 Appendix T Sections A and C shall apply.

2. Notices to Competitors

Notices to competitors will be posted on Official Bulletin Board located on the Edgewater Yacht Club patio.

3. Changes to Sailing Instructions

- 3.1 Except for changing the location of a racing area, any change to the sailing instructions will be posted at least two (2) hours prior to the warning signal of the first race on the day it will take effect.
- 3.2 Changes to the location of a racing area will be posted before 0800 on the day they apply.
- 3.3 Any change to the schedule of races will be posted by 20:00 on the day before it will take effect.

4. Signals Made Ashore

- 4.1 Signals made ashore will be displayed from the flagpole located north of the EYC clubhouse.
- 4.2 When flag AP is displayed ashore, '1 minute' is replaced with 'the warning signal will not be less than 60 minutes after the AP is lowered.' This changes Race Signal "AP."
- 4.3 When flag AP over a Class flag will indicate the postponement is for that class only. This changes Race Signal "AP."

5. Schedule of Races

- 5.1 A total of seven (7) races are scheduled for CRW Offshore Classes.

<u>Race</u>	<u>Type</u>	<u>Day/Date</u>	<u>First Warning</u>
North Coast/Mather	Fixed and Drop Marks	Thursday, June 20	6:55 PM
Stewart/Jones/Schnur	Fixed and Drop Marks	Friday, June 21	6:55 PM
50+ Race	Drop Marks	Saturday, June 22	9:55 AM
McCrone Memorial Race	Drop Marks	Sunday, June 23	9:55 AM

- 5.2 One (1) race each is schedule for both Thursday and Friday CRW Offshore Classes
- 5.3 Back-to-back races are scheduled for Saturday and Sunday.
- 5.4 Second and subsequent races for each class/division will start shortly after last finisher of that class' preceding race.
- 5.5 After the first race of the day, the Race Committee may change the start order to facilitate the timely start of the next race. Class flags will determine the start order.
- 5.6 No warning signal will be made after 2:00 PM on the last scheduled day of racing

6. Class Flags

Class flags and order of start for the first race on each day are shown in Illustration 5 & 6.

7. Race Areas all days and Start Description Thursday and Friday

- 7.1 **North Coast Race (Thursday)** The start will be between the EWYC D mark and the staff flying the Orange flag on the Race Committee Signal boat at the starboard end of the line. Courses and directions will be posted on the Official Notice Board. See "Courses - Illustration 1, & 2"
- 7.2 **Stewart/Jones/Schnur Race (Friday)** - The start will be between the EWYC D mark and the staff flying the Orange flag on the Race Committee Signal boat at the starboard end of the line. Courses and directions will be posted on the Official Notice Board. See "Courses - Illustration 2 and 3"
- 7.3 **All Saturday and Sunday Races:** Race Area A will be WEST of the EYC "S" Mark (N 41 31 23W 81 45 94). Race Area B will be EAST of EYC "C" Mark.
- 7.4 Per RRS 90.2 (C) Oral changes on the water are permitted for designating a new race area for the affected class or classes, or Racing Area. This will be construed as a change to the Sailing Instructions and not a change in the Schedule of Races. This change will be facilitated by hail and radio broadcast to the affected class or classes and the hoisting of the "L" flag from the main committee boat on that course.

8. The Courses (see "Courses - Illustration 4")

- 8.1 Courses for all race areas will be designated and displayed from the Race Committee signal boat as either: "5", "5W", "4" or "2" using placards.
- 8.2 The diagram "Courses-Illustration 1" shows the order in which marks are to be passed and the side on which each mark is to be left for each course configuration.
- 8.3 Leeward Gate: When the Race Committee sets a gate as Mark 2, all boats shall sail between the marks from the direction of the last mark, and round either to starboard or to port. If one of the gate marks is missing the remaining gate mark shall be rounded to port.

9. Course Directions: The approximate compass bearing from the starting line to Mark 1 will be displayed from the Race Committee Signal Boat.

10. Marks Except as provided in instruction 11.1, all marks will be inflatable tetrahedrons or cylinders.

- A. The Start mark is YELLOW.
- B. Mark 1 – GREEN.
Mark 1 may include an offset mark which will be a round ball which must be rounded.
- C. Mark 2 – ORANGE.
- D. The Finish mark on Course 2, 4 & 5 is YELLOW.
- E. The Finish mark on Course 5W is mark 1.
- F. Change marks are YELLOW, Subsequent change mark will revert to the original mark.

11. The Start Saturday and Sunday

- 11.1 The Start on all Racing Areas will be between the staff flying an Orange flag on the Race Committee Signal Boat and the course side of a Yellow mark placed to port of the RC signal boat.
- 11.2 Boats starting more than four (4) minutes after their starting signal will be scored as DNS without a hearing. This changes RRS 35, 63.1
- 11.3 The start order for each race area may vary after the first start of each day.
- 11.4 Boats, whose warning signal has not been made, SHALL keep well clear of the starting area and of all boats whose warning signal has been made.

12. Recalls

- 12.1 The race committee, as a disinterested party, may notify boats that have not started properly on the VHF radio channel appropriate to their race area and/or via hail.
- 12.2 The following are not grounds for redress: failure of the committee to radio or hail any or all boats, failure of a boat to hear or receive its hail, timeliness of the hail, or the order of boats within the hail. This changes RRS rules 29.1, 30.1 and 62.1(a).

13. Change of Course

- 13.1 Prior to the start for any class, a change of course along with a new heading may be signaled from the Race Committee Signal Boat by hoisting Code flag "C" at or prior to the Preparatory signal and with repeated sound signals. The class starting for which the change has been signaled will sail to the new mark which shall be Yellow.

- 13.2 To change the next leg of the course, the race committee will lay a new mark (or move the finishing line) and remove the original mark as soon as practicable. When in a subsequent change a new mark is replaced, it will be replaced by an original mark. The gate may be moved but change marks will not be used.

14. The Finish

- 14.1 The finish line on Course 4 & 6 will be between a staff displaying the Orange flag on a race committee boat and the course side of mark placed to starboard of the Race Committee Boat.
- 14.2 The finish line on Course 5 & 7 will be between a staff displaying the Yellow flag on the race committee boat and the course side of Mark # 1.
- 14.3 Boats which retire from a race for any reason, shall report their action as soon as possible to the Race Committee. This report may be made by marine radio using the radio channel appropriate to their racing area, in person to any of the Race Committee Boats, or in person to the Race Committee Headquarters at Edgewater Yacht Club (EYC). Failure to inform the Race Committee may result in disqualification or lesser penalty as determined by the Protest Committee.

15. Time Limit

- 15.1 The time limit to sail the course and finish are as follows:

Race	Race Time Limit	Mark 1 Time Limit
Thursday Evening	3 hours	1 hour
Friday Evening	4 hours	1 hour
Saturday & Sunday, each race	2 hours	1 hour

- 15.2 If no boat of the affected class has reached the first mark within one (1) hour, the race shall be abandoned for that class only.

- 15.3 **Finishing Window All Classes-Saturday and Sunday only** – A boat or boats failing to finish within twenty (20) minutes after the first boat in her class sailed the course and finished, and before the time limit as specified in SI16.1, will be scored Time Limit Expired (TLE) without a hearing. This changes RRS 35, 63.1, A4.1, A5 and A11.

16. Equipment & Measurement Checks

- 16.1 A boat and/or its equipment may be inspected at any time for compliance with the class rules and sailing instructions.

17. Penalties on the Water, Protests

- 17.1 The first two sentences of rule 44.1 are changed to: 'A boat may take a One-Turn Penalty when she may have broken a rule of Part 2 or rule 31 while *racing*. However, when she may have broken a rule of Part 2 while in the *zone* around a *mark* other than a starting *mark*, her penalty shall be a Two-Turns Penalty.
- 17.2 Unless the course is shortened to finish at the windward mark, penalties within 3 boat lengths of the windward mark or on the offset leg (if used) may be delayed and taken as soon as possible on the downwind leg.
- 17.3 Protests forms are available at race headquarters (Chart Room) at EYC, and protests shall be delivered there during the Protest Time as defined in Instruction 17.4
- 17.4 Protest Time shall end one (1) hour after the Race Committee Signal Boat from the protester's racing area docks. "Official Docking Time" will be posted on the Official Bulletin Board located on the patio.
- 17.5 Protest notices will be posted on the Official Bulletin Board shortly after Protest Time ends to inform competitors where and when there is a hearing in which they are parties and or named as a witness. This posting constitutes the notice required by RRS 63.2 (Time and Place of the Hearing).
- 17.6 Protests, the outcome of which will have no material bearing on the awarding of trophies for the regatta, may, at the Protests Committee's discretion, be postponed until after the awards ceremony.
- 17.7 The race committee will post a list of penalties being assigned by the race committee prior to the end of protest time limit. The deadline for requesting redress based on these scores will be either

30 minutes after posting of the penalty notice or the protest time limit, whichever is later. This changes RRS 62.2.

- 17.8 On the last scheduled day of racing a request for reopening a hearing shall be delivered (a) within the protest time limit if the party requesting the reopening was informed of the decision on the previous day; (b) no later than 30 minutes after the party requesting reopening was informed of the decision on that day. This changes RRS 66.
- 17.9 On the last scheduled day of racing a request for redress based on a jury decision shall be delivered no later than 30 minutes after the decision was posted, changing RRS 62.2.
- 17.10 Breaches of sailing instructions 1.2, 1.3.6, 12.4, 17.1, 20, 24, and 25 will not be grounds for a protest by a boat. This changes RRS 60.1(a). Penalties for these breaches may be less than disqualification if the PC so decides. The scoring abbreviation for a discretionary penalty imposed under this instruction will be DPI.

18. Scoring

- 18.1 Boats scored TLE will receive points equal to the number of boats in her class finishing within the Time Limit, as described in SI 16, plus one (1) point. This changes RRS 35 and A4.1.
- 18.2 When five (5) or more races have been completed, a boat's final series score will be the total of her race scores excluding her worst score (one throw-out). This changes RRS A2.
- 18.3 Questions regarding scoring may be resolved by the proper filing of a Scoring Inquiry Form which shall be available in the main room of the Club House and returned to Race Committee Headquarters (Chart Room). If the resolution of scoring issue proves unsatisfactory, boats will still have a formal request for redress available to them under RRS 62.
- 18.4 One (1) scored race shall constitute a regatta.

19. Launch, Haul-out Restrictions and Trailer Storage

- 19.1 Once launched, no keelboat shall be hauled out of the water until after the last race Sunday, except for emergencies, without prior written authorization from the Race Committee Chairman. Hauling out without authorization may result in a protest and possible disqualification.

20. Radio Communication

- 20.1 A boat, while racing shall neither make nor receive radio transmissions not available to all boats. This restriction, also applies to mobile telephones.
- 20.2 A boat may monitor race committee communications on:
Thursday and Friday Ch. 71
Channel 71-Race Area A; Channel 72-Race Area B
- 20.3 Race Committee communications, which may be overheard by competitors, shall not be grounds for redress.

21. Equipment Changes

A boat shall use the sail numbers entered on the registration form and shall not change the numbers on its sail or use a sail with a different number during the regatta without prior written permission of the Race Committee Chairman.

22. Diving Equipment & Plastic Pools

Underwater breathing apparatus and plastic pools, or their equivalent, shall not be used around boats between the first warning signal for the first race and the end of racing for the day.

23. COMPETITORS' CONDUCT

The skipper shall be responsible for the conduct of the crew before, during and after racing.

24. Prizes

Prizes will be awarded to first, second, and third place in each class. Other prizes may be awarded at the discretion of the Organizing Authority and/or individual classes.

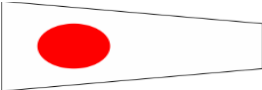
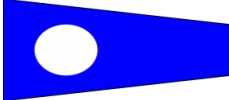
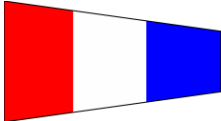
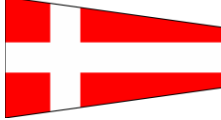
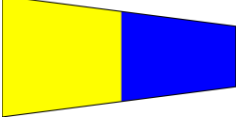

25. Disclaimer of Liability

Competitors participate in this regatta entirely at their own risk. See RRS rule 4, Decision to Race. The organizing authority will not accept any liability for material damage, personal injury or death sustained in conjunction with or prior to, during, or after a regatta.

Illustration 5

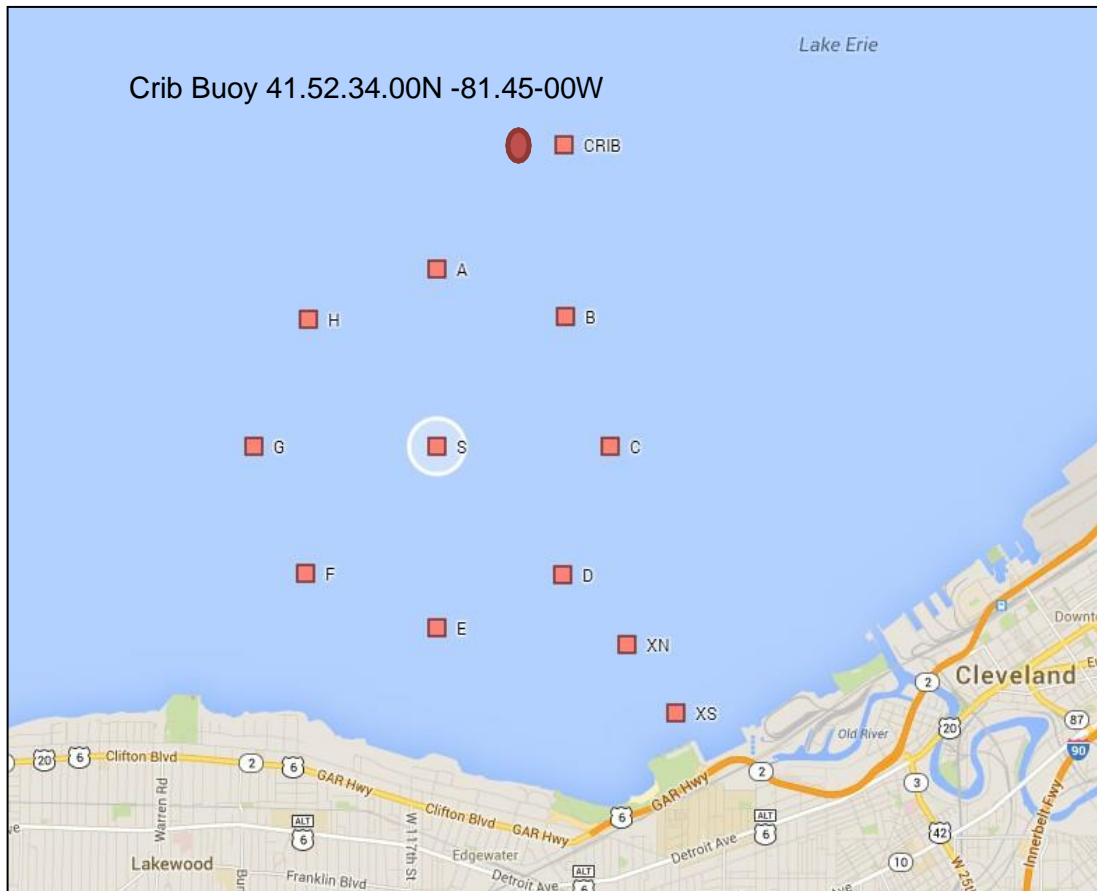
Class Flags and Initial Start Sequence THURSDAY and FRIDAY ONLY

Ch 71, 1st Warning 18:55

START	Classes	"Class" Flag
1	JAM A JAM B	
2	T/10	
3	PHRF G PHRF F	
4	J/105	
5	PHRF E PHRF D	
6	PHRF C SPORT B PHRF A	

Courses – Illustration 1

Edgewater Yacht Club – Cleveland Race Week June 23, 2016



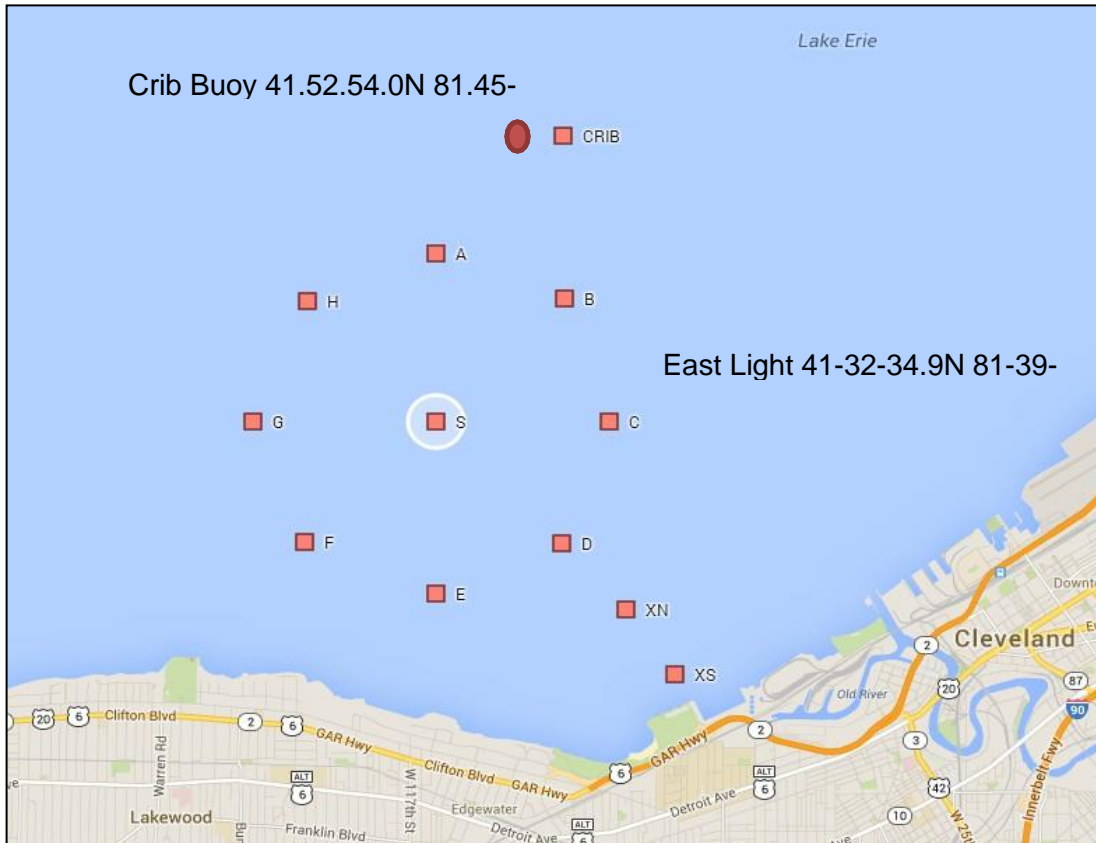
Marks to be passed in the following order:

Mark	Approx. Bearing to Next Mark	Distance to Next Mark
D - Start	Displayed	0.75
Orange tet to Port	-	Approx. 0.75-1.0
S to Starboard	020	1.62
Crib Buoy to Star.	090	0.60
Crib to Starboard	148	2.77
CLE Main Harbor Entrance	-	1.61
Mather - Finish	-	

Caution – The CLE West Harbor has moored barges and poorly lighted fixed marks. Maintain a lookout.

Courses – Illustration 3

Edgewater Yacht Club – Cleveland Race Week June 24, 2016



Marks to be passed in the following order:

Mark	Approx. Bearing to Next Mark	Distance to Next Mark
D - Start	Displayed	0.75
Orange tet to Port	-	Approx. 0.75-1.0
S to Starboard	020	1.62
Crib Buoy to Star.	090	0.60
Crib to Starboard	094	4.44
East Light CLE Harb.	227	2.88
Mather - Finish	-	

Caution – The CLE West Harbor has moored barges and poorly lighted fixed marks. Maintain a lookout.