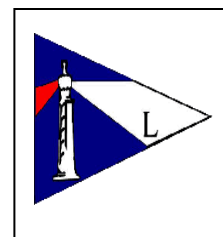


## USA JUNIOR OLYMPIC SAILING FESTIVAL



*July 13 and 14, 2016*  
*Lewes Yacht Club, Lewes, Delaware*  
National JO Sponsors: Gill, Sperry &  
New England Ropes



### SAILING INSTRUCTIONS 2.3

#### 1. RULES

- 1.1 The regatta will be governed by rules as defined by the current Racing Rules of Sailing (RRS).

#### 2 ENTRIES

Boats that have completed registration are eligible to race.

#### 3 SAFETY

- 3.1 A Coast Guard-approved PFD must be worn and fully secured at all times while afloat, except for brief periods while adding or removing clothing. Whistles permanently attached to the PFDs are recommended. This changes RRS 40.
- 3.2 A boat retiring from a race shall notify a race committee boat (yellow flag with RC on it) before leaving the course or the RC Shore person immediately upon arrival ashore.

#### 4 CHECK-IN/CHECK-OUT

All competitors must check in with the RC Shore person before leaving the beach for the competitor's first race each day. Upon returning to the beach at the end of that competitor's racing for the day the competitor must check out with the RC Shore person. Failure to check-in or check-out will result in a 20% penalty applied to the competitor's first completed race of the day without a hearing.

#### 5 NOTICES TO COMPETITORS

Notices to competitors will be posted on the Official Notice Board located on the first floor of the clubhouse.

#### 6 CHANGES IN SAILING INSTRUCTIONS

Any change to the Sailing Instructions (SIs) will be posted before 0830 on the day it will take effect, except that any change to the schedule of races will be posted by 1900 on the day before it will take effect.

#### 7 SIGNALS MADE ASHORE

- 7.1 Signals made ashore will be displayed on the flagpole on the bay side of the clubhouse.
- 7.2 Flag AP raised with two sounds (one sound when lowered) means, "The race is postponed. The initial warning signal will be made not less than 45 minutes after AP is lowered." This changes Race Signal AP.

## 8 SPECIAL SIGNALS

Flag A (White and Blue vertical stripes) displayed with no sound while boats are finishing means "no more racing today."

## 9 SCHEDULE OF RACES

Races are scheduled as follows:

Day & Date	Time of Warning Signal
Wednesday July 13, 2016	1000 Five races planned
Thursday July 14, 2016	1000 Two races planned

- 9.1 No warning signal will be made after 1230 on the last day of racing.
- 9.2 The distance from the launch site to the racing area is approximately one-half nautical mile.
- 9.3 Should conditions prevent the completion of the scheduled number of races, the regatta shall be terminated and the results based on the races completed and scored.

## 10 CLASS FLAGS

Class flags will be:

Class Optimist

Flag Optimist Class Flag

Class Laser

Flag Laser Class Flag

Class Laser Radial

Flag Laser Radial Class Flag

Class Club 420

Flag Club 420 Class Flag

## 11 RACING AREA

The racing area will be as shown in Illustration A, attached. Unless announced otherwise only area A will be used for both Opti and Laser/420 courses. The Opti course will be closer to the clubhouse and north of the Laser/420 course.

## 12 THE COURSE

- 12.1 The diagram(s) in Illustration B show the course(s), the order of rounding, and the side on which each mark is to be rounded or passed.
- 12.2 Marks shall be left to port.

- 12.3 The position of the marks may be adjusted slightly for small shifts in the mean wind without signaling a course change. Any adjustments will be made before the boat is on the leg to the affected mark. This changes RRS 33.
- 12.4 The identifying number of the course will be displayed on a white board from the Race Committee Signal Boat.

### **13 MARKS**

Course 1 - Modified Trapezoid. Starting mark will be a yellow round. Marks 1 and 3 will be red rounds. Mark 2 will be a green round. Mark 2 is also the finishing mark.

Course 2 – Windward Leeward. Starting mark will be a yellow round. Marks 1 and 3 will be red rounds. The starting mark is also the finishing mark.

Course 3 – Triangle. Starting mark will be a yellow round. Marks 1, 2 and 3 will be red rounds. The starting mark is also the finishing mark.

### **14 THE START**

- 14.1 Races will be started in accordance with RRS 26.
- 14.2 The starting line will be between the staff from which an orange flag is displayed on the Race Committee Signal Boat at the starboard end of the line (looking upwind) and the course side of the port-end starting mark.
- 14.3 Boats whose warning signal has not been made shall keep clear of the starting area. Unless starting or finishing no boat shall cross the start/finish line. Violation of this rule will result in the competitor being scored DNF without a hearing for the race in which the violation occurred.
- 14.4 If flag U has been displayed as the preparatory signal, no part of a boat's hull, crew or equipment shall be in the triangle formed by the ends of the starting line and the first mark during the last minute before her starting signal. If a boat breaks this rule and is identified, she shall be disqualified without a hearing but not if the race is restarted or re sailed or postponed or abandoned. This changes rule A5. When U flag is used rule 29.1 does not apply. The scoring abbreviation will be UFD.
- 14.5 A boat shall not start later than 5 minutes after her starting signal. A boat starting later than 5 minutes after her starting signal shall be scored Did Not Start (DNS) without a hearing. This changes RRS 63.1, A4.1 and A5.

### **15 RECALLS**

The Race Committee intends to hail OCS boats after the starting signal. The failure to make or receive such communication shall not be grounds for redress. This changes RRS 41 and 62.1 (a).

### **16 THE FINISH**

The finishing line will be between a staff displaying an orange flag on a Race Committee finish boat and the course side of a nearby finish mark. See 14.3.

## **17 TIME LIMIT**

The time limit will be 90 minutes for all classes. Boats failing to finish within 20 minutes after the first boat finishes or within the time limit, whichever is later, will be scored Did Not Finish (DNF) without a hearing. This changes RRS 35, 63.1, A4.1, and A5.

## **18 PROTESTS**

- 18.1 Protests shall be in writing on forms available at the regatta office and delivered to the regatta office within 45 minutes after the time of the docking of the race committee signal boat for that competitor's course.
- 18.2 Protests will be heard in approximately the order of receipt as soon as practicable.
- 18.3 Protest notices will be posted within 30 minutes of the protest time limit to inform competitors where and when there is a hearing in which they are parties to a hearing or named as witnesses. This posting shall constitute the notification required by RRS 63.2 and RRS 61.1(b).
- 18.4 The following sentence is added to rule 66. "On the last day of racing, a party to the hearing may ask for a reopening no later than one hour after being informed of the decision." This changes RRS 66.
- 18.5 Infringements of SI 3, 4, and 22 are not protestable by another boat. This changes RRS 60.1(a).
- 18.6 The penalty, if any, for an infringement of a rule other than a rule of Part 2 will be at the discretion of the Protest Committee and may be less than disqualification. This changes RRS 64.1(a).

## **19. PENALTIES AT THE TIME OF AN INCIDENT**

- 19.1 A boat may take a Two-Turns Penalty when she may have broken one or more rules of Part 2 in an incident while racing. She may take a One-Turn Penalty when she may have broken rule 31.

## **20 PENALTIES TAKEN AFTER A RACE**

- 20.1 After a race, a boat that may have broken a rule of Part 2 or rule 31 while *racing* Scoring Penalty, calculated as stated in rule 44.3(c). However, rules 44.1(a) and (b) apply. A boat takes a Post-Race Penalty by informing the race committee in writing and identifying the race number and when and where the incident occurred. A boat may take a Post-Race Penalty for that incident. The penalty shall be:
  - (a) 20%, if taken before the protest time limit, or
  - (b) 30%, if taken after the protest time limit but before the beginning of a hearing involving the incident.

## **21 SCORING**

The Low-Point Scoring System of Appendix A shall apply for all classes. A maximum of 7 races are scheduled, of which one shall be completed to constitute a series. If 4 or more races are sailed, a boat's worst score shall be discarded. This changes RRS A2.

## 22 SUPPORT BOATS

- 22.1 Team leaders, coaches and other support personnel shall not be in the racing area from the time of the warning signal for the first class to start until all boats have finished or the Race Committee signals a postponement, general recall or abandonment. The penalty for failing to comply with this requirement may result in disqualification of all boats associated with the support personnel who do so. RC support boats will fly a yellow flag with "RC" on it.
- 22.2 Event VHF radio channel 71, Opti course channel 78, Laser/420 channel 68.
- 22.3 Coaches must wear fully secured PFDs while on the water. Other support people – Race Committee, mark and safety boat operators, parents, etc. – are strongly encouraged to wear fully secured PFDs while on the water.
- 22.4 All coach boats and other support boats/support personnel must agree to aid any competitor in distress or requesting assistance of any sort.

## 23 PRIZES

USA Junior Olympic medals will be awarded to each member of the crew placing first, second and third in each division.

**Attachments:** Illustration A - The Racing Area

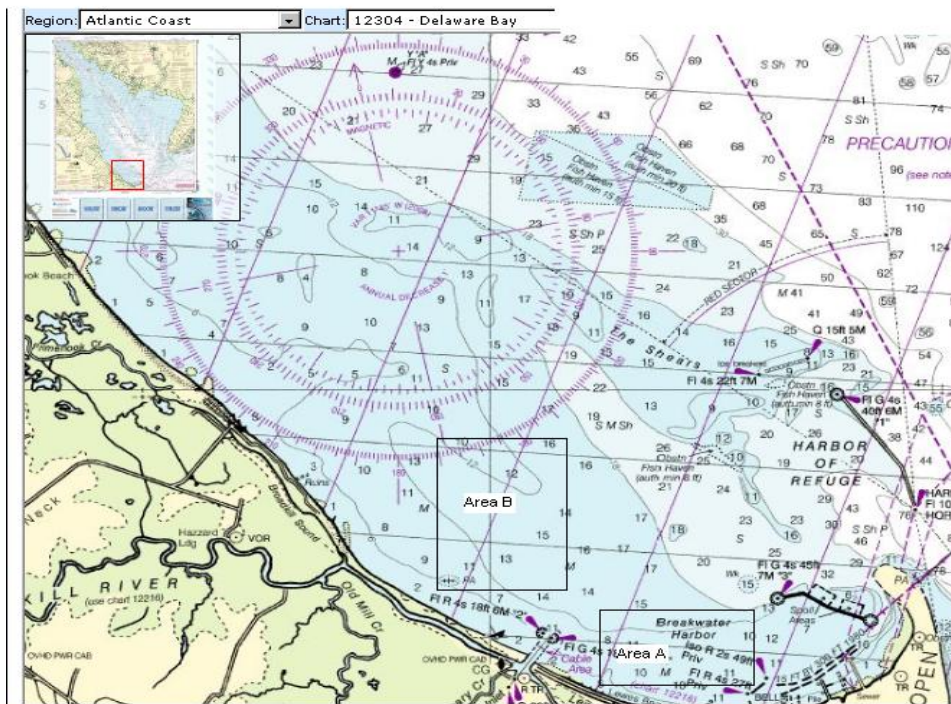
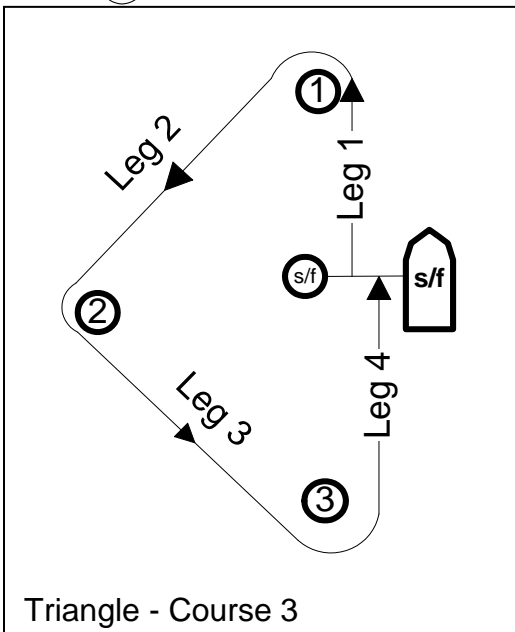
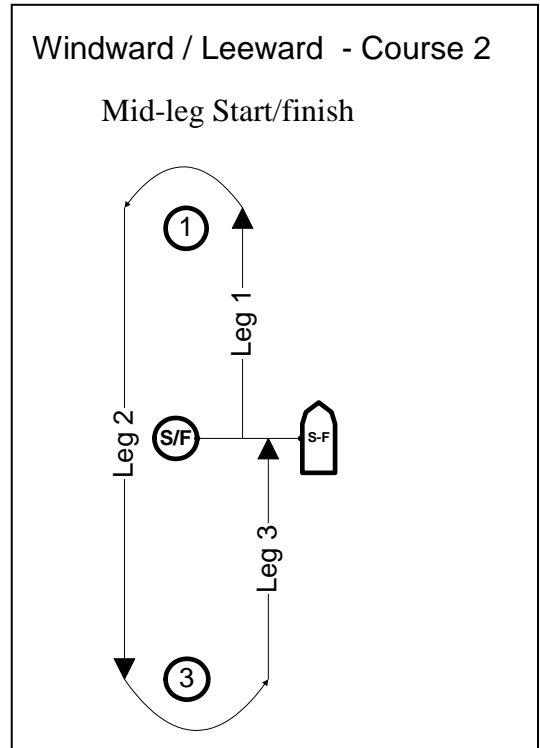
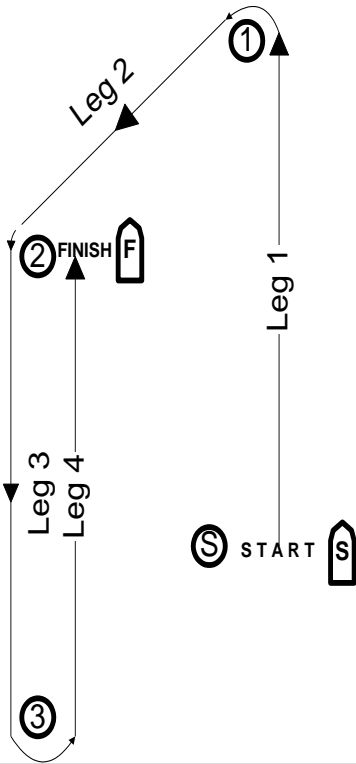


Illustration B - Course Diagrams  
 Modified Trapezoid – Course 1



Regatta Chairman: Matt Bower  
 Race Committee Chairman: Don Bland  
[treasurer@lewesyc.com](mailto:treasurer@lewesyc.com)  
 Principal Race Officer: Taran Teague  
 Deputy Race Officer: Andy Malinowski  
 Scorer: Betsy Schmidt  
 Chief Judge: Dan Trammell  
 Commodore Lewes Yacht Club: Charles Baker

**Tides:**

Wednesday July 13, 2016 Low: 1020 High: 1640

Thursday July 14, 2016 Low: 1108 High: 1731