



Waikiki Yacht Club
1599 Ala Moana Blvd
Honolulu, Hawaii, 96814
808.995.4405 | regatta@waikikiyachtclub.com

Sailing Instructions

Lipton Challenge Cup One

Saturday & Sunday, April 23rd & 24th, 2016

1. RULES:

- 1.1. The regatta will be governed by the rules as defined in *The Racing Rules of Sailing*, the prescriptions of US SAILING, the Waikiki Yacht Club Standing Sailing Instructions, the Hawaii Maritime Center Historical Trophies Advisory Board (HTAB) Notice of Challenge and Authorization Award #17 dated January 15, 2016, the Notice of Race and these Sailing Instructions.
- 1.2. World Sailing Offshore Special Regulations Appendix B will apply
- 1.3. The Racing rules will be changed as follows:
 - 1.3.1.1. Rule 55 does not apply for spinnaker stopping materials only. It still applies to trash.
 - 1.3.1.2. US Sailing Prescriptions 60, 63.2 and 63.4 do not apply.

2. **NOTICES TO COMPETITORS:** Notices to competitors will be posted on the official notice board located in the WYC on the regatta board.

3. **CHANGES TO THE SAILING INSTRUCTIONS:** Any change to the sailing instructions will be posted before 0900 on the day it will take effect, except that any change to the schedule of races will be posted by 2000 on the day before it will take effect.

4. **SIGNALS MADE ASHORE:** Signals made ashore will be displayed from the WYC flagpole

5. SCHEDULE OF RACING:

5.1. Dates of Racing:

<u>Day</u>	<u>Date</u>	<u>First Warning</u>	<u>Number of Race</u>
Saturday	4/23/2016	1055	3
Sunday	4/24/2016	1055	2

5.2. The warning signal for subsequent races on each day will occur shortly after the last boat returns to the starting area

6. **CLASS FLAGS:** The class flag used to signal the start of the sequence will be Black with #1

7. RACING AREA:

7.1. There are two alternate location for the regatta. Based on weather conditions Race Committee may elect:

Area A – Mamala Bay between Diamond Head and the Honolulu International Airport;

Area B – Maunalua Bay between Diamond Head and Kokohead.

7.2. Attachment A shows the approximate location of the race courses.

7.3. Signal Flags for race course areas:

Course Area A – Number 3 Pennant

Course Area B – Number 4 Pennant

7.4. Each morning yachts will proceed to Course Area A, unless the Course Area B flag is flying on the WYC Flag pole at 9:00am. Race Committee may signal a Course Area change on the water by flying Course Flags

8. THE COURSES:

8.1. Windward and Leeward legs will be set dependent on conditions.

Course 1 - Mark 1 to port - Mark 2 to port - Mark 1 to port – Finish downwind (Signaled with #1 pennant)

Course 2 - Mark 1 to port - Mark 2 to port - Mark 1 to port - Mark 2 to port - Mark 1 to port – Finish downwind (#2 pennant)

9. MARKS:

9.1. **Mark 1** is a windward mark, an orange tetrahedron

9.2. **Mark 2** is a leeward mark, an orange tetrahedron

10. AREAS THAT ARE OBSTRUCTIONS: None.

11. THE START:

11.1. Races will be started by using Rule 26. The starting signal is made 5 minutes before start of race.

11.2. The starting line will be between a yellow inflatable tetrahedron and an orange inflatable tetrahedron.

11.3. A boat starting later than 10 minutes after her starting signal will be scored Did Not Start without a hearing. This changes rule A4.

12. CHANGE OF THE NEXT LEG OF THE COURSE:

12.1. The direction of the changed course will be identified with a board showing the bearing to the next mark and a red or green flag to indicate if this is port or starboard of the original mark position.

12.2. To move the leeward mark or finish line, the race committee will move the original mark (or the finishing line) to a new position and signal all yachts before they begin the leg (see rule 33).

12.3. To move the windward mark, the race committee will set a new mark, an Orange inflatable round mark or "Tomato" and signal all yachts before they begin the leg (see rule 33).

13. THE FINISH:- The finishing line will be between a yellow inflatable tetrahedron and an orange inflatable tetrahedron

14. PENALTY SYSTEM: The two turn penalty, in accordance with RRS 44.2, will be in effect

15. TIME LIMIT: The time limit for each race will be two hours for the first boat to finish.

16. PROTESTS:

16.1. Protest forms are available from the race committee. Protests and requests for redress or reopening shall be delivered to the WYC office or to the PRO within the appropriate time limit

16.2. The protest time limit is 2 hours after the last boat has finished the last race of the day or the race committee signals no more racing today, whichever is later.

16.3. Protests will be posted no later than 30 minutes after the protest time limit to inform competitors of hearings in which they are parties or named as witnesses. Hearings will be held at WYC as soon as possible.

17. SCORING: The scoring system is as follows:

17.1. 3 races are required to be completed to constitute a series

17.2. There will be no throw outs. This modifies Rule A2

17.3. Yachts will be scored under PHRF system as endorsed by HYRA.

18. SAFETY REGULATIONS:

18.1. Boats will check-in with Race Committee prior to the start of each day's racing via VHF Channel 68

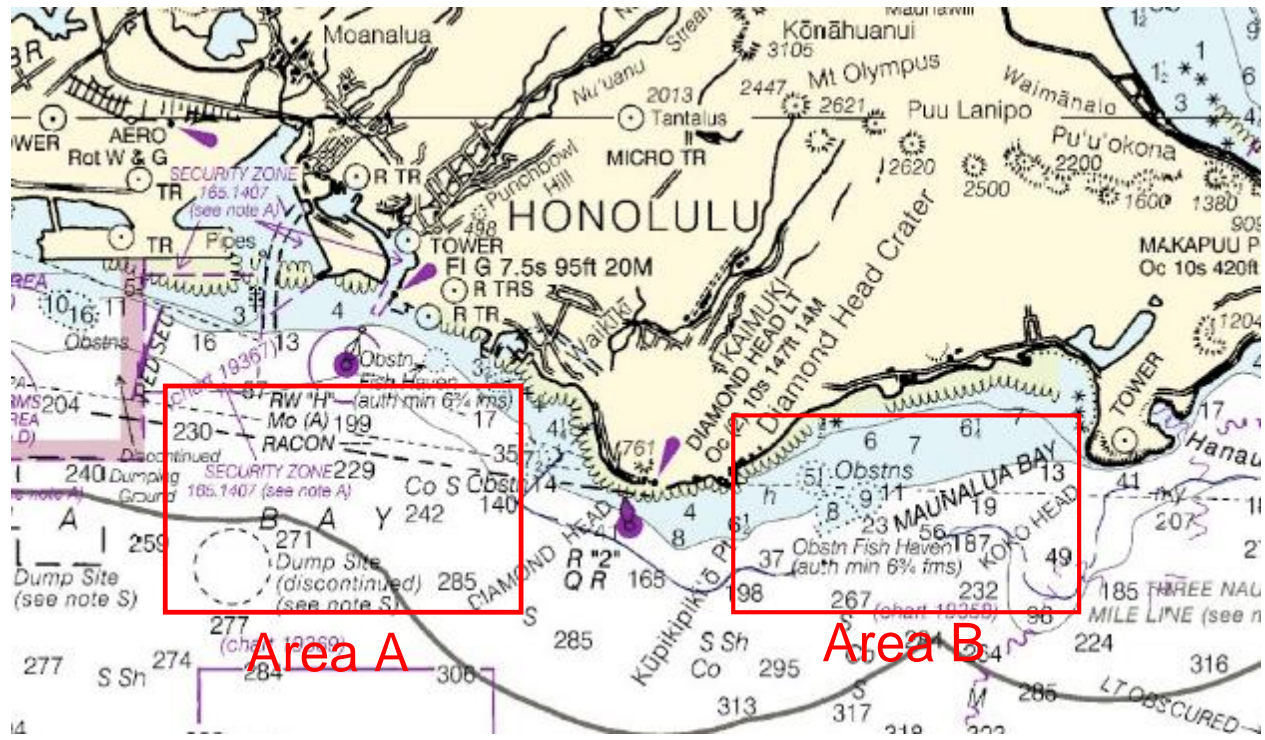
18.2. A boat that retires from a race shall notify the race committee as soon as possible via VHF Channel 68.

19. EQUIPMENT AND MEASUREMENT CHECKS:

- 19.1. A boat or equipment may be inspected at any time for compliance with the rules and sailing instructions. On the water, a boat can be instructed by a race committee equipment inspector or measurer to proceed immediately to a designated area for inspection
- 20. **PRIZES:** Prizes will be presented at the awards ceremony after the event. The Sir Thomas Lipton Challenge Cup One Trophy will be awarded to the winner of the series in accordance with the conditions of the Authorization to Award #16
- 21. **DISCLAIMER OF LIABILITY:** Competitors participate in the regatta entirely at their own risk. See rule 4, Decision to Race. The organizing authority will not accept any liability for material damage or personal injury or death sustained in conjunction with or prior to, during, or after the regatta
- 22. **INSURANCE:** Each participating boat shall be insured with valid third party liability insurance with a minimum cover of \$500,000 per incident or the equivalent.

Lipton Challenge Cup One Racing Area

Attachment A

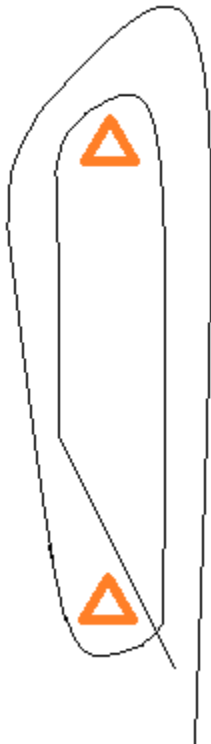


Course Diagrams

Course 1 - Mark 1 to port - Mark 2 to port - Mark 1 to port - Finish at least 4 miles (Signaled with #1 pennant)

Course 2 - Mark 1 to port - Mark 2 to port - Mark 1 to port - Mark 2 to port - Mark 1 to port - Finish. at least 6 miles (#2 pennant)

1



2

