



SAILING INSTRUCTIONS



Commodore Classic Race

HOSTED BY:

Ventura Yacht Club

1755 Spinnaker Drive

Ventura, California 93001

www.venturayachtclub.org

1. RULES:

This race will be governed by the *Racing Rules of Sailing*, the prescriptions of the USSA, the rules of the PHRF of Southern California (except as any of these are altered by these Sailing Instructions), by these Sailing Instructions and by any instructions that may be announced by the Race Committee (RC) from its station. Except for brief breaks not to exceed five minutes in duration, a Staff, Rear, Vice, or Commodore must be at the helm at all times. These breaks may not occur during the starting sequence or within five minutes of rounding a mark or finishing, nor at any time in which a tactical advantage would be gained. The PHRF Marine Industry Racer (MIR) Rule is not in effect for this race.

2. ENTRIES, HANDICAP ADJUSTMENTS:

2.1 Eligible boats may enter by completing registration online at www.venturayachtclub.org. You are encouraged to register before race day.

2.2 Area A Random Leg handicaps, with a performance factor deduction (PHRF Performance Factor times 12) will be used for the Spinnaker class.

2.3 Area A Random Leg handicaps adjusted by VYC cruising offsets (see Paragraph 8) will be used for the Non-spinnaker class.

2.4 PHRF membership is not required. Boats without a valid handicap will be assigned a temporary handicap for this event by the RC.

3. NOTICES TO COMPETITORS:

Notices to competitors will be posted on the VYC bulletin board in the lower patio.

4. CHANGES IN SAILING INSTRUCTIONS:

Changes in the Sailing Instructions will be posted before 1000 hours on the day they will take effect. Oral instructions from the RC on station on the water will be signaled by display of code flag "L" on the Committee Boat.

5. SCHEDULE OF RACE:

The warning signal for the race is scheduled for 1155 hours on May 22, 2016.

6. CLASSES:

There will be two classes -- a Spinnaker class and a Non-spinnaker cruising class. All entries will start together and sail the same course. The class flag for starting will be a Red Flag. Yachts must declare at the skippers meeting whether they are in Spinnaker or Non-spinnaker class. Boats with performance factor of 1.66 or above or dry storage boats MUST sail in the Spinnaker class.



SAILING INSTRUCTIONS



7. **FLAGS.**

Skippers are encouraged to fly their club burgee and appropriate commodore flag.

8. **VYC CRUISER OFFSETS: (for Non-spinnaker cruising class only)**

- 8.1 Dodger, plus 6
- 8.2 2 blade fixed prop, plus 3
- 8.3 3 blade fixed prop, plus 6
- 8.4 Furling headsail, plus 3
- 8.5 Furling main (no battens), plus 9
- 8.6 Anchor on bow and 100 feet or more of chain in bow, plus 9
- 8.7 Radar on mast, plus 6
- 8.8 Radar on stern pole or backstay, plus 3
- 8.9 Mylar or Kevlar headsail, minus 6
- 8.10 Mylar or Kevlar mainsail, minus 3
- 8.11 Any nylon sail (drifter, etc.), minus 6.

9. **THE COURSES:**

- 9.1 The courses will be chosen from the 2016 Commodore Classic Course Chart which is part of these Sailing Instructions.
- 9.2 Designation of the course to be sailed will be signaled from the race committee boat before or with the warning signal.
- 9.3 When an oil platform is a mark of the course, its associated mooring buoy(s) will also be considered marks of the course. Such buoys are to be rounded on the same side as the oil platform is to be rounded (i.e., to port or to starboard).

10. **CHECKING IN:**

Each boat shall check-in before the warning signal. The check-in period begins after the RC boat is anchored. A boat may check-in either by sailing close hauled on starboard tack close by the stern of the committee boat and hailing her sail number until acknowledged by the RC or by calling the RC on VHF channel 69. A boat failing to check in will be scored DNS.

11. **THE START:**

- 11.1 The race will be started in accordance with Racing Rule 26.
- 11.2 Starting line S will be between the Ventura Harbor entrance whistle buoy "R2" as the port-side mark and an orange flag or shape mounted on the Committee Boat as the starboard-side mark.

12. **RECALLS:**

- 12.1 Individual recalls will be signaled in accordance with Racing Rule 29.1 [code flag "X" and 1 sound signal].



SAILING INSTRUCTIONS



- 12.2 General recalls will be signaled in accordance with Racing Rule 29.2 [code flag "first substitute" and 2 sound signals]. A new warning signal will be made one minute after the "first substitute" is lowered.
- 12.3 After the starting signal, the Race Committee will attempt to hail the sail number(s) of the recalled boat(s) on VHF Channel 69.
- 12.4 The following shall not be grounds for granting redress:
- Failure of a boat to hear the recall hail or broadcast.
 - A boat's position in the sequence of hailed numbers or broadcast numbers.
 - Failure of the Race Committee to hail or broadcast numbers.

13. THE FINISH:

- 13.1 The finish shall be on a line from the VYC clubhouse balcony to the green light standard (#3) near the southwest end of the detached Ventura Harbor breakwater.
- 13.2 The first finisher is requested to notify the RC when approximately 1/2 hours from the finish to allow the RC time to observe the finish line. If the RC is not on station, boats shall record their own finish times. The RC will monitor VHF Channel 69 throughout the race.
- 13.3 Spinnakers shall be struck at the elbow of the detached breakwater (where it angles out to seaward from its approximately north-south orientation). Any boat sailing beyond this point with a spinnaker set will be scored DSQ by the RC. This changes Rules 63.1 and A5.

14. TIME LIMIT:

If any boat finishes before 5 p.m., the race is valid. The race will be abandoned if no boat finishes by 5 p.m.

15. RETIREMENT:

A boat that has started and subsequently retires shall notify the RC as soon as possible. The RC will monitor VHF channel 69. Club phone number is 805-642-0426.

16. PROTESTS:

Protests shall be written on forms available at the club and shall be filed with the Race Committee within 1 hour of the finish of the protesting boat.

17. SCORING:

The Low-Point Scoring System (Appendix A2 of the Racing Rules) will apply.

18. SAFETY EQUIPMENT:

PHRF classes must carry the safety equipment required by the U.S. Safety Equipment Requirements for U.S. Nearshore Races (Definition 1.0.3) as modified to add USSER 2.4.1 - 2.4.7 to require lifelines; except that coated lifelines are allowed (changes 2.4.4). . Refer to: <http://www.ussailing.org/safety/equipment-and-requirements/>. The RC reserves the right to inspect any participating boat for compliance with safety equipment or class requirements, and to disqualify nonconforming boats. Racers are reminded that they are bound by the International Regulations for Preventing Collisions at Sea. Minimum crew for PHRF is 2. All boats regardless of class shall carry a VHF radio with channels 16 and 69.



SAILING INSTRUCTIONS



19. **NON-SPINNAKER ENTRY DEFINITIONS:**

- 19.1 No spinnakers or spinnaker-like sails such as flashers, cruising 'chutes, MPSs, gennakers, etc. are allowed. All headsails must meet the measurements of Racing Rule 50.4.
- 19.2 Only one whisker pole may be used at a time and, when in use, shall be attached to the foremost mast. As per PHRF rules, whisker pole maximum length shall not exceed 1.4 X J.
- 19.3 Use of headsails larger than 155% LP carries a 6 second per mile penalty unless the boat is already handicapped for such larger sail.
- 19.4 More than one headsail may be carried set, and the headsails need not be attached to the forestay.

20. **TROPHIES:**

Awards will be presented at the attitude adjustment period following the race at the Ventura Yacht Club. Winners must be present to receive trophies.

21. **INSURANCE:** Each participating boat shall have valid third-party liability insurance.

22. **DISCLAIMER OF LIABILITY:** Competitors in this event are participating entirely at their own risk. See RRS 4, Decision to Race. The race organizers (organizing authority, race committee, protest committee, host club, sponsors, or any other organization or official) will not be responsible for damage to any boat or other property or the injury to any competitor, including death, sustained as a result of participation in this event. By participating in this event, each competitor agrees to release the race organizers from any and all liability associated with such competitor's participation in this event to the fullest extent permitted by law.

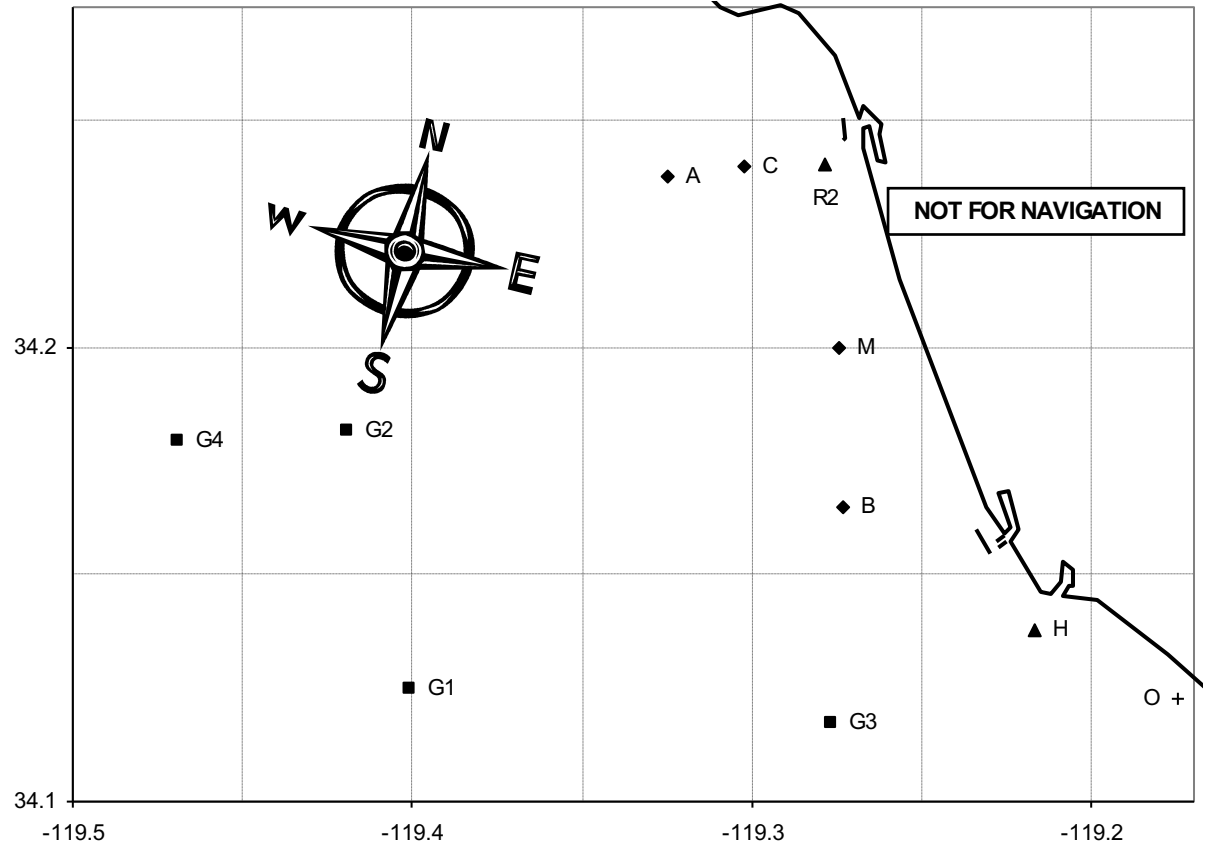


SAILING INSTRUCTIONS



2016 Commodore Classic Race Course Chart

#	Course	Approximate Magnetic Heading To First Mark	Approx. Length
1	S Bs As F	165	12.84
2	S Mp R2s F	161	5.4
3	S Ms As F	161	9.14
4	S Ms G2s F	161	18.33
5	S G3s R2s F	180	15.28
6	S G1s R2s F	220	18.74
7	S G2s F	245	16.46
8	S Ap F	260	5.49
9	S Ap Cp Ap F	260	8.19
10	S Ap R2p Cp F	260	7.95
11	S Ap Mp R2s F	260	9.25
12	S Ap R2p Cp R2p Cp F	260	10.39
13	S Ap Bp R2s F	260	12.95
14	S Ap Mp R2p Ap F	260	14.28





SAILING INSTRUCTIONS



15	S Ap Bp R2p Ap F	250	17.98
16	S Cp F	255	2.81
17	S Cp R2p Cp F	255	5.25
18	S Cp R2p Cp R2p Cp F	255	7.69
19	S Ap Mp R2p Cp F	250	11.60
20	S Cp Mp R2p Cp F	255	9.35
21	S Cp Mp R2s F	255	7.0

MARKS		APPROXIMATE LOCATION	
A	Fish Sticks spar buoy	L: 34° 14.5'N	Lo: 119° 19.9W
B	"Wes" Mark	L: 34° 09.9'N	Lo: 119° 16.5W
C	Chips spar buoy	L: 34° 14.4'N	Lo: 119° 18.2'W
H	Hue Whistle buoy RW"PH"	L: 34° 08.3'N	Lo: 119° 13.0'W
M	Mandalay spar buoy	L: 34° 12.0'N	Lo: 119° 16.5'W
O	Ormond Buoy	L: 34° 7.4'N	Lo: 119° 10.5'W
R2	Vta Whistle buoy R"2V"	L: 34° 14.4'N	Lo: 119° 16.7'W
S	Start in vicinity of Mark R2; see Sailing Instructions		
F	Finish at Ventura Harbor; see Sailing Instructions		
G1	Platform Gail	L: 34° 07.5'N	Lo: 119° 24.1'W
G2	Platform Gilda	L: 34° 10.9'N	Lo: 119° 25.2'W
G3	Platform Gina	L: 34° 07.0'N	Lo: 119° 16.6'W
G4	Platform Grace	L: 34° 10.8'N	Lo: 119° 28.1'W