



# 2016 RS Aero Long Distance Race & Speed Challenge

August 12, 2016

Columbia Gorge Racing Association  
Cascade Locks, Oregon

## NOTICE OF RACE

### 1. RULES

- 1.1. The regatta will be governed by the rules as defined in *The Racing Rules of Sailing* and the rules of the RS Aero Class Association.
- 1.2. The US Sailing prescriptions to rules 60, 63.2 and 63.4 are deleted.
- 1.3. Racing Rule 40 is changed as follows: Competitors shall wear personal flotation devices, except briefly while changing or adjusting clothing or personal equipment. Wet suits and dry suits are not personal flotation devices (code flag Y need not be displayed).

### 2. ADVERTISING

- 2.1. Competitor advertising shall be restricted to the current ISAF Regulation 20, Advertising Code.
- 2.2. Boats may be required to display advertising and/or bow numbers chosen and supplied by the organizing authority.

### 3. ELIGIBILITY & ENTRY

- 3.1. The regatta is open to all boats of the RS Aero class.
- 3.2. Eligible competitors may enter by completing the online registration form and fee payment found on the Columbia Gorge Racing Association Website [www.cgra.org](http://www.cgra.org).
- 3.3. All participants, or their parent or guardian if under age 18, will be required to agree to a waiver of liability as a condition of eligibility. This waiver may be completed either during online registration or at the event check-in.
- 3.4. All participants under the age of 18 shall be accompanied for the duration of the regatta by a responsible adult who shall be named in the Parent/Guardian Consent Form.

### 4. CLASSIFICATION

- 4.1. This event is open to sailors of all classifications as described in ISAF Regulation 22, Sailor Classification Code.

### 5. FEES

- 5.1. The entry fee is \$25 for entries completed with payment on or before July 10, 2016.
- 5.2. An entry fee of \$35 will be charged for entries completed or paid after July 10, 2016.
- 5.3. CGRA Members (Intermediate or Pro) are eligible for an additional discount of \$5.00.
- 5.4. The entry fee includes racing, boat storage for the duration of the event, and post-racing refreshments and barbecue.

### 6. SCHEDULE

---

Friday, August 10	10:00 am	Check-in at CGRA Race Office
	Noon	Long Distance Race Warning
	3:30 pm	Speed Challenge
	5:30 pm	Beach BBQ

---

**7. INSPECTION & MEASUREMENT**

7.1. All boats shall comply with RS Aero class rules and specifications. Spot checks may be performed on any boat by the race committee or judges at any time during the event.

**8. SAILING INSTRUCTIONS**

8.1. The Sailing Instructions will be available at event check-in and posted.

**9. VENUE**

9.1. The Columbia River adjacent to Cascade Locks Marine Park (see Attachment A)

**10. COURSES**

10.1. Long Distance Race: Boats will start off the beach adjacent to the CGRA Race Office, round a turning mark approximately 6.5 miles upstream, and return to finish off the beach.

10.2. Speed Challenge: No specified course; reaching recommended!

**11. SCORING**

11.1. Long Distance Race: All rigs (5, 7, 9) will race as a single fleet and be scored using the current UK Portsmouth Yardstick numbers for the RS Aero.

11.2. Speed Challenge: All boats will have 10 minutes to post their fastest time as recorded and displayed by the supplied Velocitek SpeedPuck GPS devices. Fastest recorded time wins.

**12. PRIZES**

12.1. Prizes will be awarded to the winner of the long distance race and the fastest boat in the speed challenge.

**13. SAFETY**

13.1. Boats shall not impede the passage of commercial vessels and shall comply with the [U.S. Inland Navigation Rules Act of 1980](#). Boats that fail to comply promptly with signals from a committee boat to alter course, or that receive a 5-blast warning (5 short sounds) from a commercial vessel, will be subject to protest and possible disqualification.

**14. RISK, DISCLAIMER OF LIABILITY, & PERSONAL CONDUCT**

14.1. Competitors participate in the regatta at their own risk. See Rule 4 (Decision to Race). The organizing authority will not accept any liability for material damage or personal injury or death sustained in conjunction with or prior to, during, or after the regatta.

14.2. Competitors will accept full responsibility for all their actions during any activity related to this event. This includes on-shore activities before, during, and after the regatta.

14.3. Competitors are expected to abide by the Marine Park Rules as stated in Attachment C.

**15. RIGHT TO USE NAME & LIKENESS**

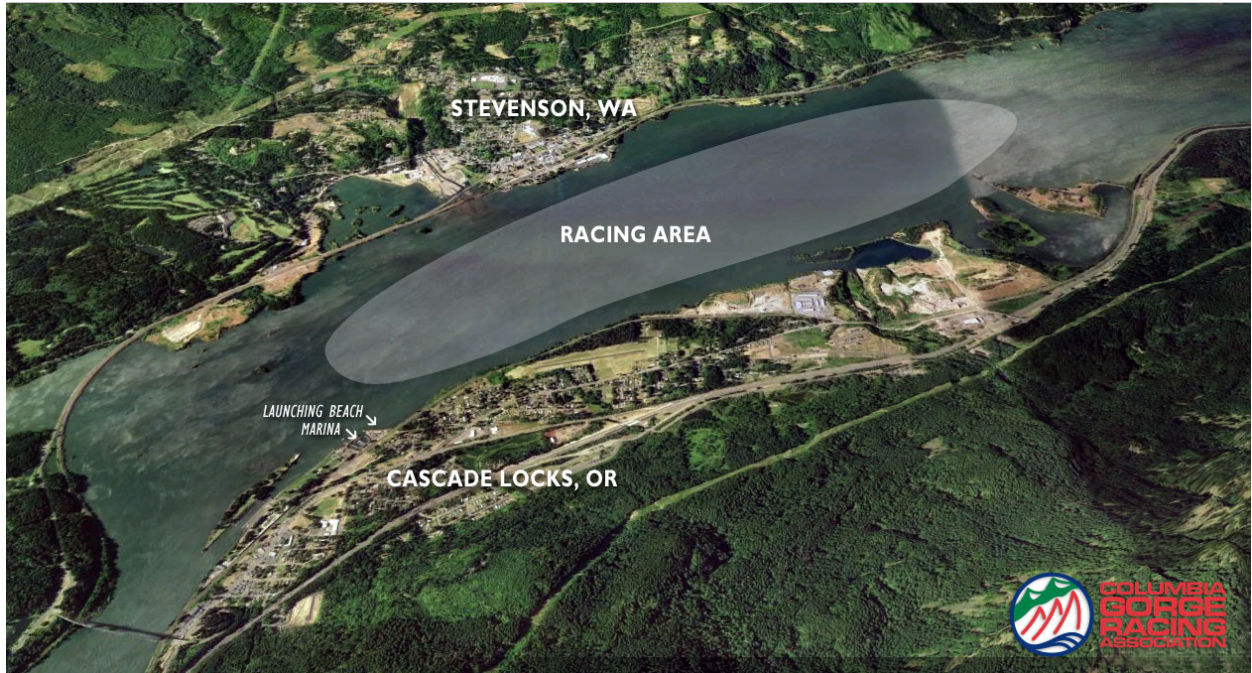
15.1. By participating in this event, all competitors automatically grant the organizers and sponsors the right to make, use and show, at any time and at their discretion, any photographs or videos of him or her produced during the period of the event without compensation.

**16. FURTHER INFORMATION**

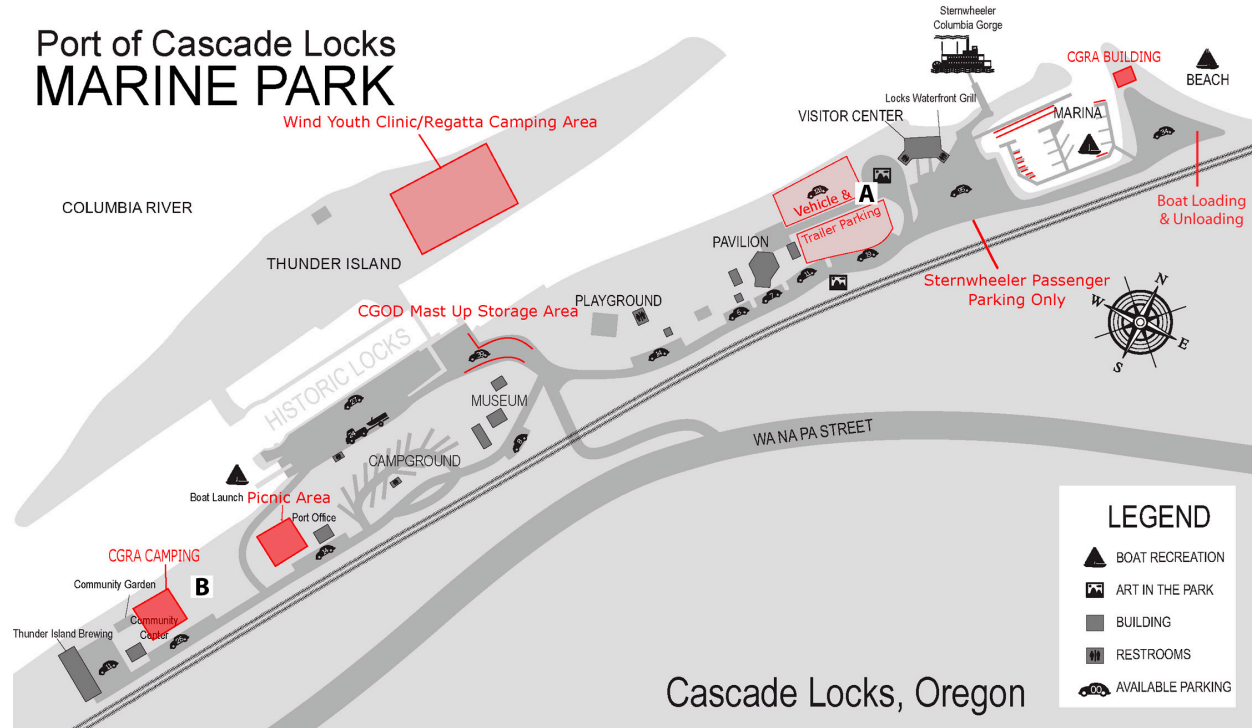
16.1. Additional useful information regarding accommodations, travel, and area recreation is available online at [www.cgra.org](http://www.cgra.org).

16.2. For more information, please contact Regatta Chairman Michael O'Brien at [mob@emobrien.com](mailto:mob@emobrien.com).

### Attachment A: Racing Area



### Attachment B: Marine Park Map



## **Attachment C: Marine Park Rules & Guidelines**

Welcome to Cascade Locks Marine Park. This is a public facility that CGRA shares with other visitors, so please be courteous and respectful to other park and beach users. Also please obey all posted signs and regulations. By following these guidelines you will help to ensure that we may continue to hold regattas at the Marine Park.

### **Parking**

- Park only in designated (striped) parking spots in the beach parking lot.
- Do not park in spaces marked for marina patrons.
- Do not park in the area marked for boat trailers.
- Do not park along the south side of the road leading to the beach.
- Do not park in the parking lot adjacent to the Visitor Center. This is exclusively for use by patrons of the Sternwheeler Cruises.
- RVs and campers are not allowed to park in the beach parking without a special permit.
- Overflow parking will be available in area A (see map) if beach parking lot is full. Please see the race management office or notice board.

### **Trailer Parking**

- Trailers must be parked in the designated area only (Area A on map).
- Trailers may not be left in automobile parking spaces.
- Overflow trailer parking will be available if trailer area is full. Please see the race management office or notice board.
- Boats may be left in the moorage pen only with the permission of the CGRA facilities manager. See the regatta office for more information.
- Trailer fee of \$5/day can be paid either at the Port office (see map) or upon event check in at CGRA office. Trailer tag must be affixed to the trailer.

### **Camping**

- On most weekends camping is available at the Marine Park. Check in with camp host to get a camping spot. Campground pricing is as follows:
  - Sites 1-12: \$28/night (hookups)
  - Sites 13-16: \$18/night (2 tents per site)
- Reservations are accepted for campground only.
- Overflow camping area is for sailing events only (no reservations). Fee: \$12/tent.
- Camping must be in designated areas only. No camping in parking lots or beach area.
- No campfires are allowed.
- Showers/restrooms are open to public. Restrooms are located in three areas:
  - Boat Launch area
  - Marine Park (middle)
  - Campground (with showers)
- Trash receptacles are provided for garbage.
- RV dump station is located in the campground.

### **Miscellaneous**

- Please keep personal gear and boat equipment together, out of the way and safe at all times. CGRA and the Port of Cascade Locks are not responsible for lost or stolen items.
- Bins are available for secure, overnight storage in the CGRA container.
- Pick up all trash.
- Do not prop open the gate to the Marina.
- Park hours: No person shall remain in the Port Marine Park between the hours of 10 pm- and ½ hour before sunrise unless the person is a camper in an authorized Port campsite.
- Unauthorized vehicles, trailers, or boats left unattended are left at their own risk and may be subject to towing and/or a fine.