



2016 GOVERNOR'S CUP

SATURDAY JUNE 11, 2016

HOSTED BY:

VENTURA YACHT CLUB

1755 SPINNAKER DRIVE

VENTURA, CALIFORNIA 93001

(805) 642-0426

www.venturayachtclub.org

SAILING INSTRUCTIONS

1. RULES

This sailing event will be governed by *The Racing Rules of Sailing (RRS)*, the prescriptions of the United States Sailing Association, the rules of the Performance Handicap Racing Fleet, the Notice of Race (except as any of these are changed by these sailing instructions) and by these sailing instructions, which shall prevail in cases of conflict. The PHRF Marine Industry Racer (MIR) Rule is not in effect.

2. ENTRIES

- 2.1 Eligible boats may be entered by completing registration with the Ventura Yacht Club, including the payment of all required fees. **Competitors are encouraged to register online prior to race day. Simply go online to www.venturayachtclub.org and follow the links. It's easy!**
- 2.2 Spinnaker, Non-spinnaker, and Multihull classes are planned with class breaks determined by entries. Yacht club affiliation and a valid PHRF rating certificate are required for PHRF Spinnaker and non-spinnaker class entries. PHRF membership is not required for Multihull class entries. Each skipper is solely responsible that his/her yacht and sails are in conformance with the PHRF Rules (or ORCA Rules for Multihulls).

3. NOTICES TO COMPETITORS

Notices to competitors will be posted on the Racing Notice Board located in the lower patio of the Ventura Yacht Club.

4. CHANGES TO SAILING INSTRUCTIONS

- 4.1 Any change to the sailing instructions will be posted before 0945 hours on the day it will take effect.
- 4.2 To indicate that a change to the sailing instructions has or will be posted, code flag "L" will be displayed from the club flagstaff before 0945 hours on the day it will take effect.

5. SCHEDULE OF RACES

The warning signal for the first class is scheduled for 1155 hours.

2016 GOVERNOR'S CUP



6. CLASSES

- 6.1 Class breaks will be determined based on the number of entries and their respective ratings. Classes will be announced at the Skipper's meeting.
- 6.2 Class flags:
 - Class A: red
 - Class B: white
 - Class C: blue
 - Class D: green

7. THE COURSES

- 7.1 Courses will be selected from the attached 2016 VYC Governor's Cup Course Chart.
- 7.2 Designation of the course to be sailed will be signaled from the Race Committee boat before or with the warning signal for the first starting class. For subsequent classes, the course will be displayed with or soon after their class warning signal.
- 7.3 When an oil platform is a mark of the course, its associated mooring buoy(s) will also be considered marks of the course. Such buoys are to be rounded on the same side as the oil platform is to be rounded (i.e., to port or to starboard).

8. TIME LIMIT

If any boat in a class finishes before sunset, the race is valid for that class. If no boat in a class finishes before sunset, the race is abandoned for that class and will not be re-sailed. Sunset on June 11, 2016 will be considered to be 2009. The official time reference shall be GPS time.

9. CHECK IN BEFORE THE START

Before the first warning signal, each boat shall hail her sail number and class, on VHF Channel 69, which will be acknowledged by the Race Committee.

10. THE START

- 10.1 Races will be started in accordance with RRS 26. The order of starts will be announced at the skipper's meeting.
- 10.2 The starting line will be located between the "Mandalay" mark as the port end mark, and an orange flag or shape mounted on the Committee Boat as the starboard end mark.
- 10.3 Boats whose preparatory signal has not been made shall keep clear of the starting area and of all boats whose preparatory signal has been made.
- 10.4 To draw attention that the race starting sequence is about to begin, several sound signals will be made approximately one minute before the warning signal for the first class.

11. RECALLS

- 11.1 Individual recalls will be signaled in accordance with RRS 29.1 [code flag "X" and 1 sound signal].
- 11.2 General recalls will be signaled in accordance with RRS 29.2 [code flag "First Substitute" and 2 sound signals]. When a general recall has been signaled, the starts for the succeeding classes will be postponed accordingly.
- 11.3 After the starting signal, the Race Committee will attempt to hail the sail number(s) of the recalled boat(s) on VHF Channel 69.

2016 GOVERNOR'S CUP



11.4 The following shall not be grounds for granting redress:

- A) Failure of a boat to hear the recall hail or broadcast.
- B) A boat's position in the sequence of hailed numbers or broadcast numbers.
- C) Failure of the Race Committee to hail or broadcast numbers.

12. RETIREMENT

A boat that retires from a race after checking in shall notify the race committee before leaving the racing area or, if that is not possible, notify the Ventura Yacht Club as soon as possible. The Race Committee will monitor VHF Channel 69. The phone number for the Ventura Yacht Club is: (805) 642-0426.

13. CHECK IN DURING THE RACE

13.1 All competitors racing after sunset (2009) are requested to contact the RC on VHF Channel 69 and provide approximate location and expected finish time.

13.2 The first finisher is requested to notify the Race Committee when approximately 30 minutes from the finish. If the Race Committee is not on station, boats shall record their finish times. The Race committee will monitor VHF Channel 69 throughout the race.

14. THE FINISH

14.1 The finish shall be on a line from the Ventura Yacht Club balcony to the green light standard (#3) near the southern end of the detached breakwater.

14.2 Spinnakers shall be struck before passing a line extending from the elbow of the detached breakwater to the light on the south jetty. Any boat sailing beyond this point with a spinnaker set may be scored DSQ by the race committee. This changes Rules 63.1 and A5.

14.3 If poor visibility conditions (fog, rain, etc.) exist when finishing at the Ventura Harbor entrance and/or when finishing after sunset, racers shall notify the RC when approximately ½ mile from the finish and shall record their own finish times when crossing the finish line. Boats shall record their own finish times by GPS time reference and report their finish to the race committee within 30 minutes after finishing.

15. PROTESTS

Protests shall be written on forms available at the VYC office and shall be filed there with the Race Committee within 1 hour of the finish time of the protesting boat (or within 1 hour of her return to harbor if she retires).

16. SCORING

The Low Point Scoring System (Appendix A of the RRS) will apply.

17. ALTERNATIVE PENALTIES

Reminder: The two-turns penalty, RRS 44.2, applies.

18. RADIO COMMUNICATION

The Race Committee will monitor VHF Channel 69.

2016 GOVERNOR'S CUP



19. SAFETY

Boats must carry the safety equipment required by the U.S. Safety Equipment Requirements for U.S. Nearshore Races (Definition 1.0.3) as modified to add USSER 2.4.1 - 2.4.7 to require lifelines; except that coated lifelines are allowed (changes 2.4.4). Refer to: <http://www.ussailing.org/safety/equipment-and-requirements/>. All boats regardless of class shall carry a VHF radio with channels 16 and 69. The Race Committee reserves the right to inspect any participating boat for compliance with safety equipment or class requirements, and to disqualify nonconforming boats. Racers are reminded that they are bound by the International Regulations for Preventing Collisions at Sea when encountering vessels that are not racing.

20. INSURANCE: Each participating boat shall be insured with valid third-party liability insurance.

21 NON-SPINNAKER CLASS DEFINITIONS

21.1 No spinnakers or spinnaker-like sails such as flashers, cruising 'chutes, MPSs, gennakers, etc. are allowed. All headsails must meet the measurements of RRS 50.4.

21.2 Only one spinnaker pole or whisker pole may be used at one time and, when in use, shall be attached to the foremost mast.

21.3 Use of headsails larger than 155% LP carries a 6 second per mile penalty unless the boat is already handicapped for such larger sail.

21.4 More than one headsail may be carried set, and the headsails need not be attached to the forestay.

22 CREW LIMITS

The minimum number of persons aboard shall be 2.

23. AWARDS

Individual "take-home" awards will be presented after racing at Ventura Yacht Club. The perpetual trophy will be awarded with winners' names inscribed at the Annual Awards Dinner Meeting at Ventura Yacht Club in January 2017. The perpetual trophy shall remain at Ventura Yacht Club. If 3 or more lady drivers enter by June 1, there will be a special Lady Driver trophy.

Number of boats in class	Awards given
2-3	1st place
4-6	1st and 2nd place
7 or more	1st, 2nd and 3rd place

24. DISCLAIMER OF LIABILITY:

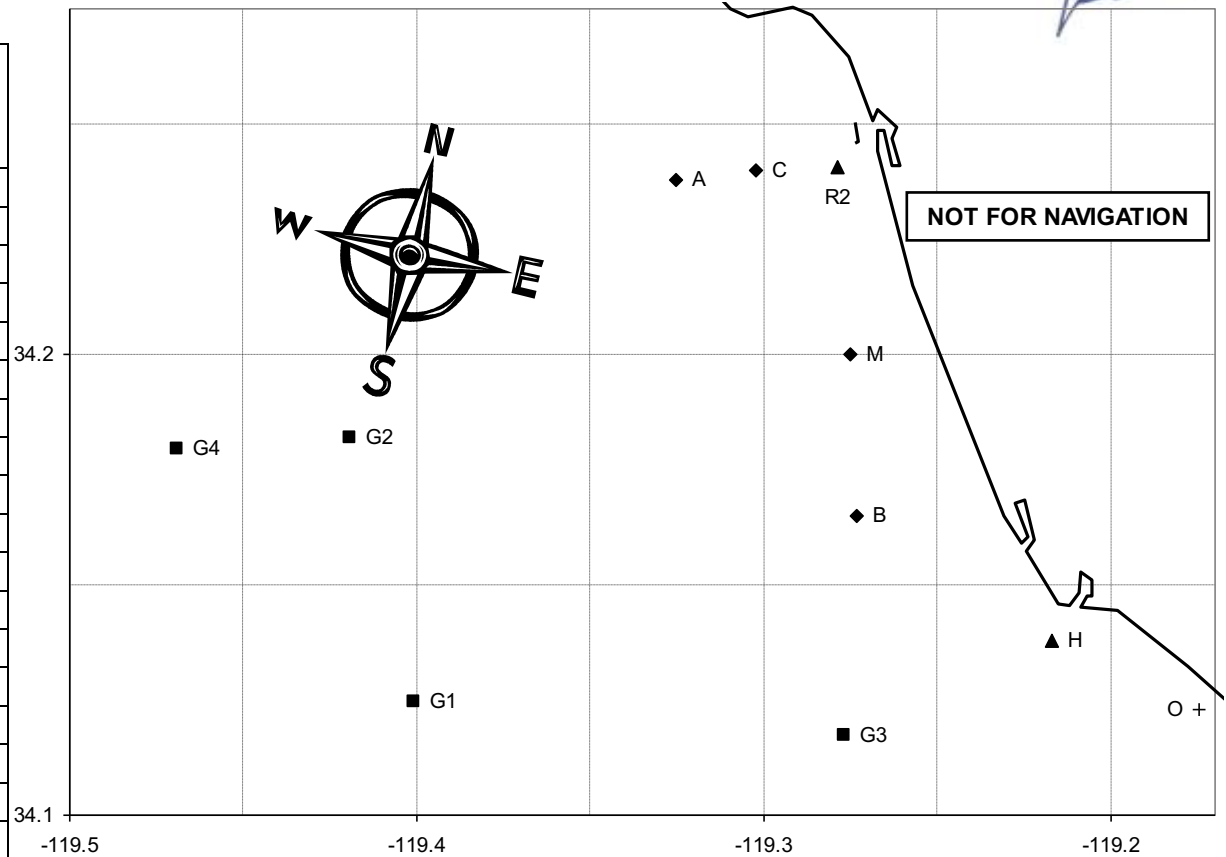
Competitors in this event are participating entirely at their own risk. See RRS 4, Decision to Race. The race organizers (organizing authority, race committee, protest committee, host club, sponsors, or any other organization or official) will not be responsible for damage to any boat or other property or the injury to any competitor, including death, sustained as a result of participation in this event. By participating in this event, each competitor agrees to release the race organizers from any and all liability associated with such competitor's participation in this event to the fullest extent permitted by law.



2016 VYC GOVERNOR'S CUP COURSE CHART



#	Course	Magnetic Heading To First Mark	Course Length
1	S Bs G1s R2s F	164	18.8
2	S Bs Mp G2s F	164	20.1
3	S Bs G4s F	164	22.6
4	S G3s Bs G3s R2s F	167	18.6
5	S G3s Cp Ap R2p Ap F	167	20.9
6	S G3s Ms G3s R2s F	167	22.8
7	S G3s G1s R2p Ap F	167	25.6
8	S G3s R2s G3s R2s F	167	27.7
9	S G1s As F	220	18.4
10	S G1s Cp Ap F	220	20.3
11	S G1s As Cs As F	220	20.7
12	S G1s R2p Ap F	220	22.2
13	S G1p G3p G1s R2s F	220	30.4
14	S G2s Cp Ap F	247	18.3
15	S G2s R2p Ap F	247	20.1
16	S G2p Bp G2s F	247	31.0
17	S G2p G3p G2s F	247	32.5
18	S G4s F	249	20.5
19	S G4s Cp Ap F	249	22.5
20	S G4s G2s G4s F	249	25.8
21	S Ap G4p F	298	22.0
22	S Ap Ms G2s F	298	22.7
23	S Ap Ms G4s F	298	27.2
24	S Ap G3s G4s F	298	32.2
25	S R2p G2p F	341	18.9
26	S R2p G1p R2s F	341	21.7
27	S R2p G4p F	341	23.3



MARKS		APPROXIMATE LOCATION	
A	Fish Sticks spar buoy	L: 34° 14.5'N	Lo: 119° 19.9'W
B	"Wes" Mark	L: 34° 09.9'N	Lo: 119° 16.4'W
C	Chips spar buoy	L: 34° 14.4'N	Lo: 119° 18.2'W
H	Hue Whistle bouy RW"PH"	L: 34° 08.3'N	Lo: 119° 13.0'W
M	Mandalay spar buoy	L: 34° 12.0'N	Lo: 119° 16.5'W
O	Ormond Buoy	L: 34° 7.4'N	Lo: 119° 10.5'W
R2	Vta Whistle buoy R"2V"	L: 34° 14.4'N	Lo: 119° 16.7'W
S	Start in vicinity of Mark M; see Sailing Instructions		
F	Finish at Ventura Harbor; see Sailing Instructions		
G1	Platform Gail	L: 34° 07.5'N	Lo: 119° 24.1'W
G2	Platform Gilda	L: 34° 10.9'N	Lo: 119° 25.2'W
G3	Platform Gina	L: 34° 07.0'N	Lo: 119° 16.6'W
G4	Platform Grace	L: 34° 10.8'N	Lo: 119° 28.1'W