

Bay Bridge Regatta 2016
South Beach Yacht Club
SAILING INSTRUCTIONS

1. Rules

- 1.1. The regatta will be governed by the rules as defined in *The Racing Rules of Sailing*.
- 1.2. Racing Rule 40 will be changed as follows: All competitors are required to wear lifejackets or other adequate personal buoyancy while racing. The “Y” flag will not be displayed.
- 1.3. Appendix T, Section A, T1 shall apply: The first two sentences of rule 44.1 are changed to: ‘A boat may take a One-Turn Penalty when she may have broken a rule of Part 2 or rule 31 while *racing*. However, when she may have broken a rule of Part 2 while in the *zone* around a *mark* other than a starting *mark*, her penalty shall be a Two-Turns Penalty.

2. Entry

- 2.1. Eligible boats shall complete registration online (www.southbeachyachtclub.org) in accordance with the Notice of Race.
- 2.2. All boats are invited to participate. Each non-One-Design boat shall have a 2016 Northern California PHRF certificate.
- 2.3. Boats without a 2016 Northern California PHRF handicap certificate will be assigned a PHRF rating by the Race Committee.
- 2.4. One Design Fleets will be made at the discretion of the Organizing Authority.

3. Signals Made Ashore

- 3.1. Signals made ashore will be displayed from the Mast on the South Beach Yacht Club Clubhouse upper deck.
- 3.2. When the AP flag is displayed from the mast, “1” minute is replaced by “not less than 30 minutes”.

4. Communications with Competitors

- 4.1. Official Notices will be posted on the event electronic bulletin board:
<http://www.regattanetwork.com/event/12743>
- 4.2. Changes to the Sailing Instructions will be posted by 10:15am on the day they are to take effect
- 4.3. Competitors should monitor VHF 78 for the on the water communications with the Race Committee
- 4.4. Communication from the Race Committee shall not be considered outside help. This changes Rule 41.

5. Number and Schedule of Races

- 5.1. Three races are scheduled for Saturday and two for Sunday

6. Racing Area

- 6.1. The racing area will be in the South of the Bay Bridge and East of South Beach Harbor.

Bay Bridge Regatta 2016
South Beach Yacht Club
SAILING INSTRUCTIONS

7. Courses & Marks

- 7.1. Courses, mark descriptions and a chartlet are described in Attachment One, "Official Description of Marks and Courses".
- 7.2. No later than the Warning Signal, a code flag will be displayed from the Race Committee Boat designating the course to be sailed.
- 7.3. No later than the warning signal, a flag designating the mark rounding direction will be displayed from the signal boat. If a red flag is displayed, all temporary marks, with the exception of the gate (G), shall be rounded to port. If a green flag is displayed, all temporary marks, with the exception of the gate, shall be rounded to starboard. Marks G will be a gate. In the event that the gate is not in place, the single leeward mark shall be rounded in the same direction as the previous mark.

8. Starting Order

- 8.1. The initial intended starting order is as follows with subsequent starting orders at the discretion of the PRO:

Starting Order	Class	Class Flag
1200 Warning	J/111	A
	J/120	B
	J/105	C
	PHRF	D

9. The Start

- 9.1. The starting area will be East of South Beach Harbor.
- 9.2. The starting line will be between a staff displaying an orange flag on the RC boat and a temporary orange mark.
- 9.3. Each boat is requested to sail by the committee boat prior to the first warning to check in. There will be no Radio Check-in. Requests for check-in confirmation by radio will be ignored.
- 9.4. The Race Committee reserves the right and option to combine classes into a single start, in which case the respective class flags will be flown simultaneously. Scoring will be by designated fleets.
- 9.5. A boat starting later than 4 minutes after her start signal will be scored DNS without a hearing. This changes rule A4.

10. Recalls

- 10.1. The Race Committee may hail the sail number(s) of the boat(s) identified On Course Side (OCS) at the starting signal. **The failure of a hail, the failure of a boat hearing the hail or the order of the hails shall not be grounds for redress. This changes rule 62.1(a).**

Bay Bridge Regatta 2016
South Beach Yacht Club
SAILING INSTRUCTIONS

11. The Finish

- 11.1. There are two finishing lines defined: DW Finishing line shall be the Start line and the Windward Finishing Line shall be the entrance to McCovey cove as defined in Mark/Line Descriptions table.
- 11.2. Boats retiring before finishing are requested to notify the Race Committee as soon as practical on VHF channel 78 or 415-810-2004 if the RC does not respond.

12. Restricted Areas

- 12.1. Boats whose preparatory signal has not been made are requested to keep clear of any boat whose preparatory signal has been made.

13. Commercial Traffic and Safety

- 13.1. Boats shall not impede the passage of commercial vessels and shall comply with the USCG Navigation Rules.

14. Time Limits

- 14.1. Boats finishing after 30 minutes behind the first finishing boat in their division will be scored as DNF. This changes rule 35, A4 and A5.

15. Scoring

- 15.1. For the PHRF Class, Races will be scored using the PHRF Handicap System with Time-on-Time scoring as described by US Sailing:
<http://www.ussailing.org/racing/offshore-big-boats/phrf/time-on-time-scoring/>
 $TCF = A / (B + PHRF)$
Where A = 650
Where B will be assigned by the race committee:
B = 480 for heavy air, 550 for average conditions, 600 for very light air.

- 15.2. Fleet and division assignments is at the sole discretion of the Race Committee.
- 15.3. One race must be completed to constitute a series
- 15.4. There will be one excluded score if 5 races are completed in the regatta. This changes rule A2.

16. Protests and Requests for Redress

- 16.1. Protests and requests for redress may be written on Standard US Sailing Protest Forms available from the Race Committee. Protests and Requests for Redress for all divisions shall be delivered to a Race Committee representative no later than 1 hours after the RC boat returns to the dock. The Race Committee will post its docking time on the event electronic bulletin board. See SI 4.1.

17. Awards

- 17.1. Prizes will be awarded based on entries.

PRO: Don Wieneke (415-332-0186 dkwieneke@gmail.com)
Regatta Chairman: Gerard Sheridan (415-810-2004 gerard.sheridan@gmail.com)

**Bay Bridge Regatta 2016
South Beach Yacht Club
SAILING INSTRUCTIONS**

Attachment 1 – Official Description of Marks and Courses

Reference Sailing Instruction 7.3 for rounding direction for temporary marks in courses 8-18.

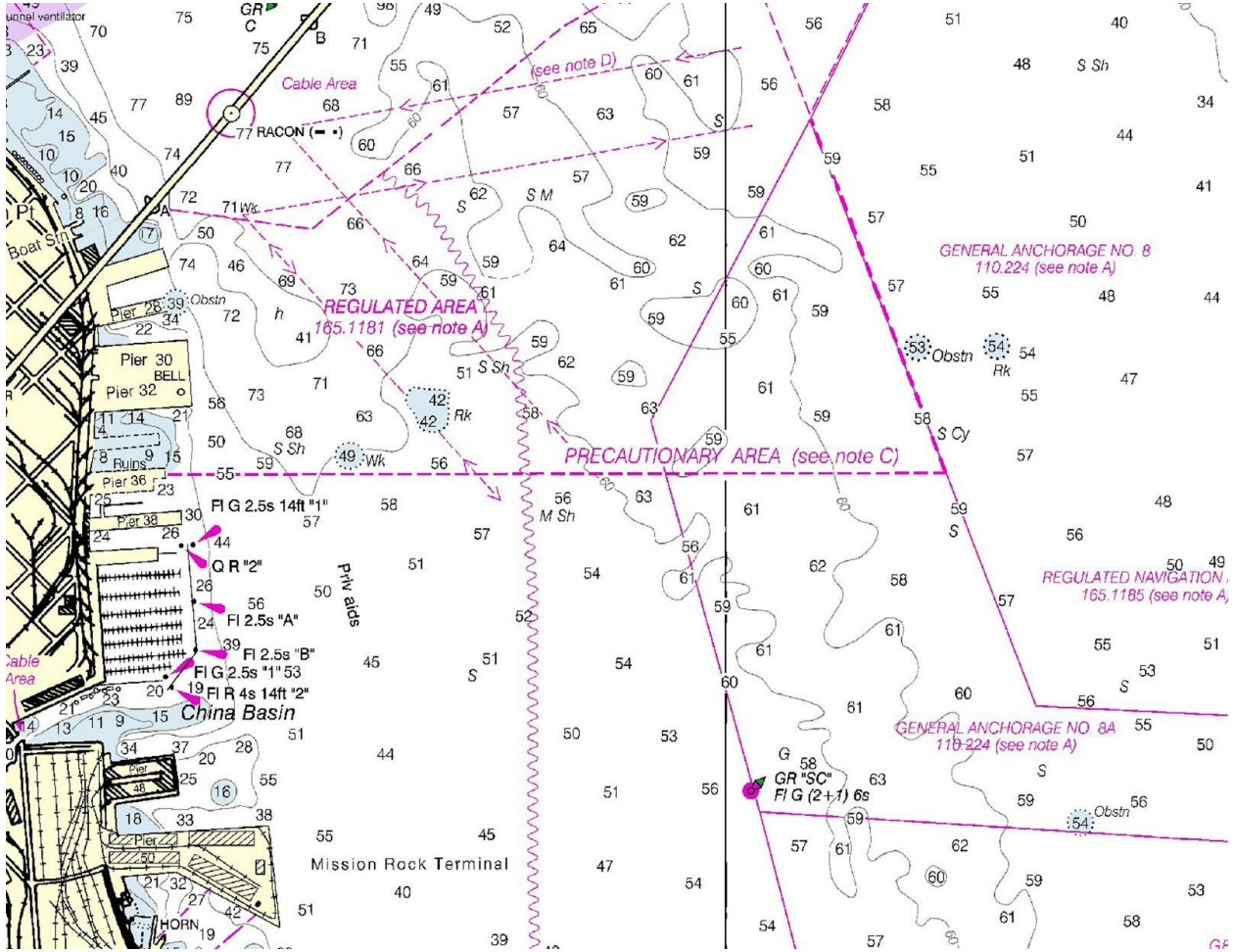
Course #	Marks and rounding order
1	Start -> W -> R -> DW Finish
2	Start -> W -> R -> Gate -> W -> R -> DW Finish
3	Start -> W -> R -> Gate -> W -> R -> Gate -> W -> R -> DW Finish
4	Start -> W -> R -> Gate -> W -> R -> Gate -> W -> R -> Gate -> Windward Finish
5	Start -> W -> R -> Gate -> Windward Finish
6	Start -> W -> R -> Gate -> W -> R -> Gate -> Windward Finish

Mark/Line Descriptions

Mark/Line	Mark Description
Start	The starting line will be between a staff displaying an orange flag on the RC boat and a temporary orange mark.
DW Finish	The downwind finishing line will be the Start line.
W	A temporary 8ft Orange Cone approx 700 yards East of McCovey Cove
Gate	Two Inflatable 8 ft orange cones set as a leeward gate set in the vicinity upwind of the starting area.
Windward Finish	Finishing line between the eastern corner of Pier 48 and Green channel marker Fl G 2.5s "1" (Entrance to McCovey Cove)
R	A temporary Orange Tetrahedron reaching mark set to square up the downwind leg.

**Bay Bridge Regatta 2016
South Beach Yacht Club
SAILING INSTRUCTIONS**

Course Area Chart



Bay Bridge Regatta 2016
South Beach Yacht Club
SAILING INSTRUCTIONS

Course Diagram - Not To Scale

