

# Boatyard Bar & Grill Race to Benefit CRAB



Saturday, 20 August 2016

ORGANIZING AUTHORITY  
Eastport Yacht Club



## SAILING INSTRUCTIONS

With Amendment No. 1

### 1 RULES

Racing shall be governed by the rules as defined in the current *Racing Rules of Sailing* (RRS).

### 2 ENTRIES

- 2.1 The regatta is open to all competitors who register with the organizing authority and pay the entry fee prior to 1200 hours on Thursday, 18 August 2016.
- 2.2 All boats shall comply with their Class Rules.
- 2.3 Boats registered in the **CRAB** and **PHRF NON SPIN** classes shall not use spinnakers. Boats registered in **PHRF SPIN** may use spinnakers. One-design classes will register/race **PHRF SPIN** or **NON-SPIN**, in accordance with their Class Rules.

### 3 NOTICES TO COMPETITORS

Notices to Competitors shall be posted on the Official Notice Board located outside, near the ground floor rear entryway doors and "Sparky's Shed" on the Eastport Yacht Club (EYC) grounds.

### 4 CHANGES TO THE SAILING INSTRUCTIONS

Any changes in the SIs shall be posted before 0800 hours on the day it will take effect, except that any change in the schedule of races shall be posted by 2000 hours on the day before it takes effect.

### 5 SIGNALS MADE ASHORE

- 5.1 Signals made ashore shall be displayed from the EYC flagpole, located on the waterside of the clubhouse.
- 5.2 When flag AP is displayed ashore, "1 minute" is replaced with "not less than sixty (60) minutes in the race signal AP. This changes RRS Race Signals.

### 6 SCHEDULE OF RACES

- 6.1 The schedule of events is:
 

Thu, 18 August	2000	Entry & registration closes
Fri, 19 August	1730	Individual start times for the pursuit race posted
	1730-1930	Skippers bags available at EYC
Sat, August 20	0830-1000	Skippers bags available at EYC
	1100	Rendezvous
	1155	Warning signal for first starter in the pursuit race
		Warning signal for Harbor 20 class will be made as soon as practicable after the final pursuit racer starts
- 6.2 Competitors shall rendezvous at 1100 hours in the vicinity of R2 (FI R, 2.5s) (CBYRA "X").
- 6.3 No Warning signal shall be made after 1330 hours.
- 6.4 All PHRF and one-design racers shall display from the backstay their class flag as specified in paragraph 4 of the CBYRA Green Book General Sailing Instructions. Competitors in the **CRAB** class shall display the CRAB burgee from the backstay. Neither the **J/70** class nor the **HARBOR 20 (FULL CREW)** class is required to display a class flag. The **HARBOR 20 (SINGLEHANDED)** class shall display a yellow flag. Competitors in the **ALERION 28 EXPRESS** class shall display the Alerion class flag from the backstay.

## 7 RACING AREA

The racing area shall be south and east of R2 (FI R, 2.5s) (CBYRA "X"), at the start of the channel to the Severn River and Annapolis on the Chesapeake Bay.

## 8 CHECK IN

Prior to starting, all contestants shall check in by sailing past the stern of the Race Committee (RC) Check In Boat (flying a solid yellow flag), hail their sail number, and be acknowledged by the RC Check In Boat. The RC Check In Boat will be stationed approximately 100 yards west of the RC Signal Boat. Do not attempt to check in with the RC Signal Boat.

## 9 THE COURSE

9.1 For the **CRAB**, **PHRF SPIN**, **PHRF NON-SPIN ALERION EXPRESS 28**, **CAL 25**, and **J/70** classes, RC shall designate one (1) of two (2) possible courses to be sailed (refer to FIGURE 1). The board designating the course to be sailed shall be displayed on the non-start side of the RC Signal Boat. The two (2) possible courses are:

### **RED "P" COURSE**

**START – CBYRA "H" – G87 – FINISH**

All rounding marks shall be kept to port.

### **GREEN "S" COURSE**

**START – G87 – CBYRA "H" – FINISH**

All rounding marks shall be kept to starboard.

9.2 The **HARBOR 20 (FULL CREW)** and **HARBOR 20 (SINGLEHANDED)** classes shall refer to Attachment A.

## 10 MARKS

10.1 For the **CRAB**, **PHRF SPIN**, **PHRF NON-SPIN ALERION EXPRESS 28**, **CAL 25**, and **J/70** classes, the marks have the following Lat/Long coordinates.

### **CBYRA "X"**

R2, FI 2.5s

N 38° 56.50'

W 076° 25.56'

### **CBYRA "H"**

GC SR

N 38° 53.65'

W 076° 25.88'

### **G87**

G "WR87"

N 38° 55.90'

W 076° 23.60'

10.2 The **HARBOR 20 (FULL CREW)** and **HARBOR 20 (SINGLEHANDED)** classes shall refer to Attachment A.

## 11 THE START

11.1 This shall be a pursuit race with a reverse PHRF Time over Distance (ToD) starting order. The boat with the slowest (largest) rating shall start first and the fastest (smallest) rating shall start last.

11.2 The **HARBOR 20 (FULL CREW)** and **HARBOR 20 (SINGLEHANDED)** classes shall refer to Attachment A.

11.3 The race committee shall signal the starting sequence as follows (this changes RRS 26):

TIME	SIGNAL	FLAG / SOUND
1155	Warning signal for all boats	Raise large EYC burgee with 1 sound
1156	Preparatory signal for the first boat to start	Raise code flag "P" with 1 sound
1159		Lower code flag "P" with a long sound
1200	Starting signal for the first boat to start	Lower large EYC burgee and briefly raise number pennant "0" with 1 sound
each subsequent start time	Starting signal for remaining boats	Briefly raise number pennant "0" with 1 sound

11.4 For the purposes of the definition of "racing," each boat's Preparatory signal is four (4) minutes prior to their scheduled start. This changes RRS Definitions.

11.5 The start times for all boats shall be based on their PHRF ToD handicap. The race shall use GPS time synchronization. The RC will attempt to broadcast a five (5) second countdown for each starting time on VHF channel 73. Failure of the RC to announce a start time will not be grounds for redress.

11.6 The start time for each boat shall be available at EYC no later than 1730 hours on Friday, 19 August 2016, and will be posted on the EYC website.

11.7 The start line shall be between a staff displaying an orange flag on the RC boat and **CBYRA "X."**

11.8 After the Warning signal for the first start, boats shall stay clear of the starting area until four (4) minutes before their scheduled starting time.

- 11.9 RRS 29.1 is replaced with: "When at a boat's starting signal any part of her hull, crew or equipment is on the course side of the starting line, the race committee shall promptly hail her number on VHF channel 73. **Individual Recall, code flag "X," will not be used.**"
- 11.10 Boats that are On Course Side shall receive a scoring penalty of ten (10) minutes plus the amount of time early. This changes RRS 44.3(c).
- 11.11 In the event a postponement is signaled on the water, the RC shall announce the revised start times on VHF channel 73 before lowering the postponement flag.

## 12 THE FINISH

- 12.1 For the CRAB, PHRF SPIN, PHRF NON-SPIN ALERION EXPRESS 28, CAL 25, and J/70 classes, the finish line shall be between a staff displaying an orange flag on the RC boat and **CBYRA "X"**.
- 12.2 The race committee may shorten the course at any rounding mark in accordance with RRS 32.
- 12.3 The **HARBOR 20 (FULL CREW)** and **HARBOR 20 (SINGLEHANDED)** classes shall refer to Attachment A.

## 13 TIME LIMIT

- 13.1 For the **CRAB, PHRF SPIN, PHRF NON-SPIN ALERION EXPRESS 28, CAL 25, and J/70** classes, if no boat finishes within 3-1/2 hours of the start of **the first boat**, the race shall be abandoned.
- 13.2 The **HARBOR 20 (FULL CREW)** and **HARBOR 20 (SINGLEHANDED)** classes shall refer to Attachment A.
- 13.3 Boats failing to finish within one (1) hour after the first boat that sails the course and finishes shall be scored Did Not Finish. This changes RRS 35 and A4. Boats leaving the course without finishing shall promptly notify RC on VHF channel 73.

## 14 PROTESTS AND REQUESTS FOR REDRESS

- 14.1 A boat intending to protest about an incident that occurs in the racing area shall notify the RC finish boat of her intention either by hail or by radio on VHF channel 73. She shall include the sail number of the boat(s) being protested. This changes RRS 61.1(a).
- 14.2 The protest time limit is sixty (60) minutes after the RC Signal Boat dock time. The list of protests will be posted on the official notice board within fifteen (15) minutes after the end of protest time limit. This posting constitutes the notification required in RRS 61.1b and 63.2.
- 14.3 Breaches of SIs 8, 14, 15.1, 17, and 18 will not be grounds for a protest by a boat. This changes RRS 60.1(a). Penalties for these breaches may be less than disqualification if the jury so decides.
- 14.4 Protest forms are available at EYC. Protests shall be delivered there within the protest time limit.
- 14.5 Hearings will begin as soon as possible after racing. Protest notices will be posted and will be heard in the approximate order of receipt. The parties and their witnesses shall remain in the area of the protest hearings.
- 14.6 When the RC or Protest Committee protests a boat, the requirements of RRS 61.1(b) to notify the boat may be met by posting a list of protested boats on the Official Notice Board and the Protest Board before the end of the protest time limit.

## 15 SAFETY

- 15.1 A boat that retires from a race shall notify the RC as soon as possible either by hail or on VHF channel 73.
- 15.2 A boat may not exercise right of way, cross in proximity to, or interfere with reasonable transit of the race area by commercial ships, tugs, or barges. Boats must take evasive action well in advance of a potentially dangerous situation. The US Coast Guard, ship captains, and bay pilots have been encouraged to report any incident they observe.
- 15.3 The Race Committee or Protest Committee may protest a boat for SI 15.2 based on information received from any source. The protest time limit does not apply. This changes RRS 60.2, 60.3, and RRS 61.3.
- 15.4 RRS 42.3 (Propulsion - Exceptions) is changed by adding: "(j) A boat that is without way in a ship channel may use any means of propulsion to clear the channel at the approach of commercial traffic provided that, when becoming clear of the commercial traffic, the boat has not improved their position as a result of this action. A boat claiming this exception shall report the incident in writing to the protest committee within the protest time limit, with all the facts necessary to substantiate the boat's speed and change of position during the incident."
- 15.5 RRS 62.1 (Redress) is changed by adding: "(e) clearing a ship channel in compliance with SI 15.4."

## 16 SCORING

- 16.1 Boats will be scored in the order of finish.
- 16.2 There will be at least six (6) scored classes in the pursuit race: **CRAB, PHRF SPIN, PHRF NON-SPIN ALERION EXPRESS 28, CAL 25, and J/70.**
- 16.3 The **HARBOR 20 (FULL CREW)** and **HARBOR 20 (SINGLEHANDED)** classes shall refer to Attachment A.
- 16.4 One-design scoring will be granted for any class with at least six (6) entries.

## 17 RADIO COMMUNICATIONS

- 17.1 RC shall communicate with competitors on VHF channel 73.
- 17.2 Boats are encouraged to make contact with commercial traffic on VHF channel 13, as required for safety.
- 17.3 Specially-designated and equipped CRAB boats may communicate with their designated safety boat.

## 18 DISPOSAL OF TRASH

This is a Clean Race. All competitors are strongly encouraged to use multi-use water bottles instead of disposable water bottles, and to recycle whenever possible. RRS 55 prohibits placing trash in the water.

## 19 DISCLAIMER OF LIABILITY

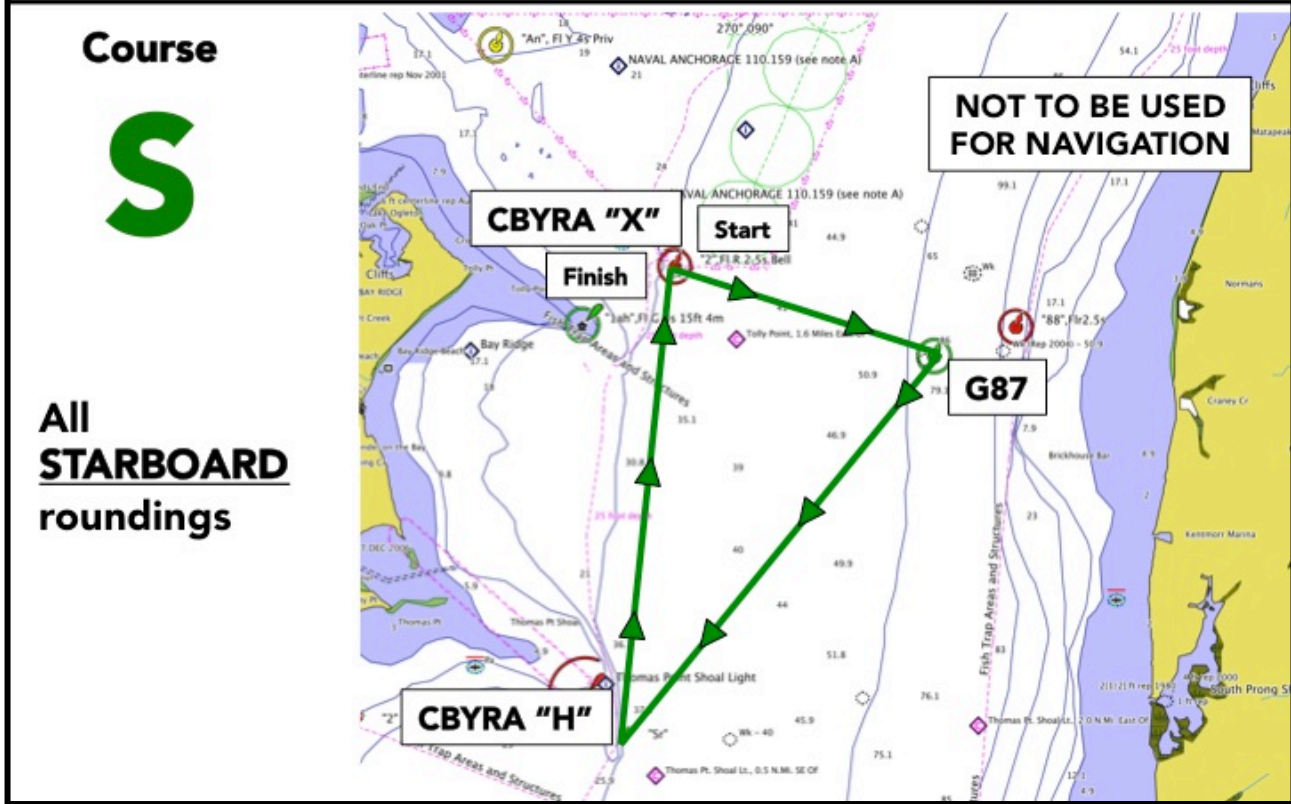
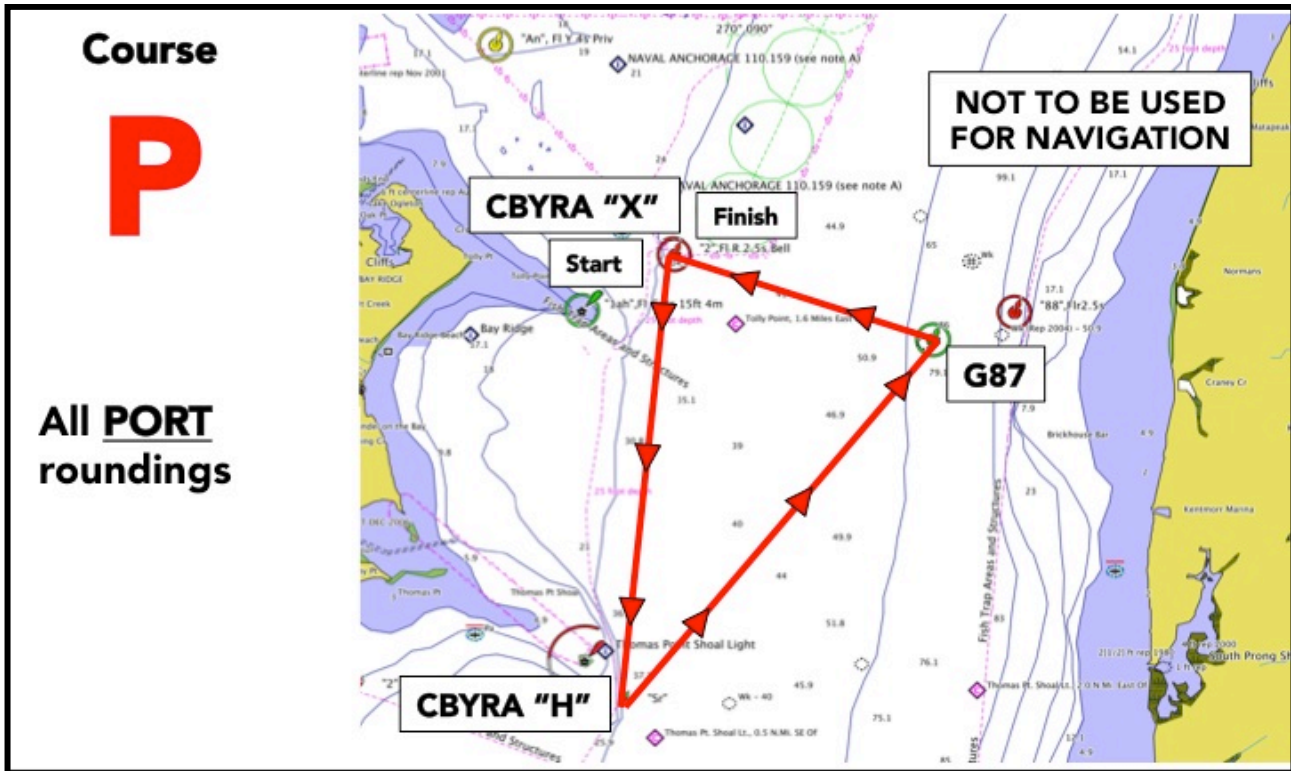
Competitors participate in the Boatyard Bar & Grill Race to Benefit CRAB entirely at their own risk; see RRS 4. The organizing authority will accept no liability for material damage, personal injury, or death sustained in conjunction with or prior to, during, or after the event.

## 20 INSURANCE

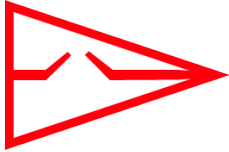
Each boat shall be insured with valid third party liability insurance with a minimum coverage of \$300,000.

## 21 SOCIAL

- 21.1 A post-race party and trophy presentation will be held at EYC, 317 First Street, Annapolis, immediately after racing concludes and is open to participants and CRAB supporters. A bar will open at 1600 hours. Food service and a live band will be from 1700-2000 hours. Entry, food, and drink tickets will be available at the party.
- 21.2 Prizes for 1<sup>st</sup>, 2<sup>nd</sup>, and 3<sup>rd</sup> Places will be awarded for the Overall finish positions in the pursuit race.
- 21.3 Special trophies for 1<sup>st</sup> and 2<sup>nd</sup> Places will be awarded in the **CRAB** class.
- 21.4 Prizes in the **PHRF SPIN, PHRF NON-SPIN, ALERION EXPRESS 28, CAL 25, HARBOR 20 (FULL CREW), HARBOR 20 (SINGLEHANDED),** and **J/70** classes will be as follows:
  - 1<sup>st</sup> and 2<sup>nd</sup> Places for six (6) or more entries; and,
  - 3<sup>rd</sup> Place for seven (7) or more entries.
- 21.5 The North Sails Fleet Award will be presented to the one-design fleet with the greatest number of boats on the start line at the Boatyard Bar & Grill Race to Benefit CRAB. For the purposes of this award, the **HARBOR 20 (FULL CREW)** and **HARBOR 20 (SINGLEHANDED)** classes will be combined into a single Harbor 20 class.



**FIGURE 1. CRAB Pursuit Race Course Diagrams**



# Boatyard Bar & Grill Race to Benefit CRAB



Saturday, 20 August 2016

ORGANIZING AUTHORITY  
Eastport Yacht Club



## ATTACHMENT A for the HARBOR 20 (FULL CREW) and HARBOR 20 (SINGLEHANDED) Classes

### 1 THE COURSE

- 1.1 The course, shown in Figure A-1, shall be:  
**START – CBYRA “Y” – CBYRA “J” – G13 – FINISH**
- 1.2 The marks shall be rounded in the following manner:  
CBYRA “Y” shall be kept to PORT;  
CBYRA “J” shall be kept to PORT;  
G13 shall be kept to PORT.
- 1.3 The Horn Point Shoal Mark (HP, FI W 6.0s) and the Greenbury Point Dolphin (A, FI Y 2.5s) shall be passed on the channel side.

### 2 MARKS

For the **HARBOR 20 (FULL CREW)** and **HARBOR 20 (SINGLEHANDED)** classes, the marks have the following Lat/Long coordinates.

<b>CBYRA “X”</b>	<b>CBYRA “Y”</b>	<b>CBYRA “J”</b>	<b>G13</b>	<b>G 1SC</b>
<u>R2, FI 2.5s</u>	<u>R N14</u>	<u>G5, FI 4.0s</u>	<u>G13</u>	<u>G 1SC</u>
N 38° 56.50'	N 38° 59.11'	N 38° 58.30'	N 38° 58.94'	N 38° 58.89'
W 076° 25.56'	W 076° 28.35'	W 076° 27.72'	W 076° 28.40'	W 076° 28.80'

### 3 THE START

- 3.1 Upon the completion of starting all **CRAB**, **PHRF**, and non-Harbor 20 one-design boats, the Race Committee (RC) Signal Boat may reposition around **CBRYA “X”** in order to set a starting line square to the course into the river.
- 3.2 The RC shall use a single start sequence for a consolidated start for both the **HARBOR 20 (FULL CREW)** and **HARBOR 20 (SINGLEHANDED)** classes. The RC shall signal a wakeup call with multiple sounds, approximately one (1) minute prior to the Warning signal.
- 3.3 The RC shall use a large EYC burgee as the **HARBOR 20 (FULL CREW)** and **HARBOR 20 (SINGLEHANDED)** Warning/class flag.
- 3.4 Recalls shall be signaled in accordance with RRS 29.
- 3.5 The RC may attempt to notify boats identified as on the course side by announcing their sail numbers on VHF channel 73. Failure to transmit or receive such notification will not be grounds for redress. This changes RRS 62.

#### 4 THE FINISH

- 4.1 The finish line shall be between a staff displaying an orange flag on the NW corner of the EYC deck and "G1SC" at the mouth of Spa Creek.
- 4.2 When finishing, "G1SC" shall be left to starboard. Boats that have finished shall clear the finish area completely and not sail back through the finish line. Boats leaving Spa Creek after crossing the finish line shall pass to the north of "G1SC." This changes RRS 28.1.

#### 5 TIME LIMIT

- 5.1 If no boat in either of the HARBOR 20 class finishes within 2-1/2 hours of the start, the race shall be abandoned.
- 5.2 Boats failing to finish within one (1) hour after the first HARBOR 20 (FULL CREW) or HARBOR 20 (SINGLEHANDED) that sails the course and finishes shall be scored Did Not Finish. This changes RRS 35 and A4. Boats leaving the course without finishing shall promptly notify the RC on VHF channel 73.

#### 6 SCORING

Boats will be scored in the order of finish, within their FULL CREW or SINGLEHANDED class.

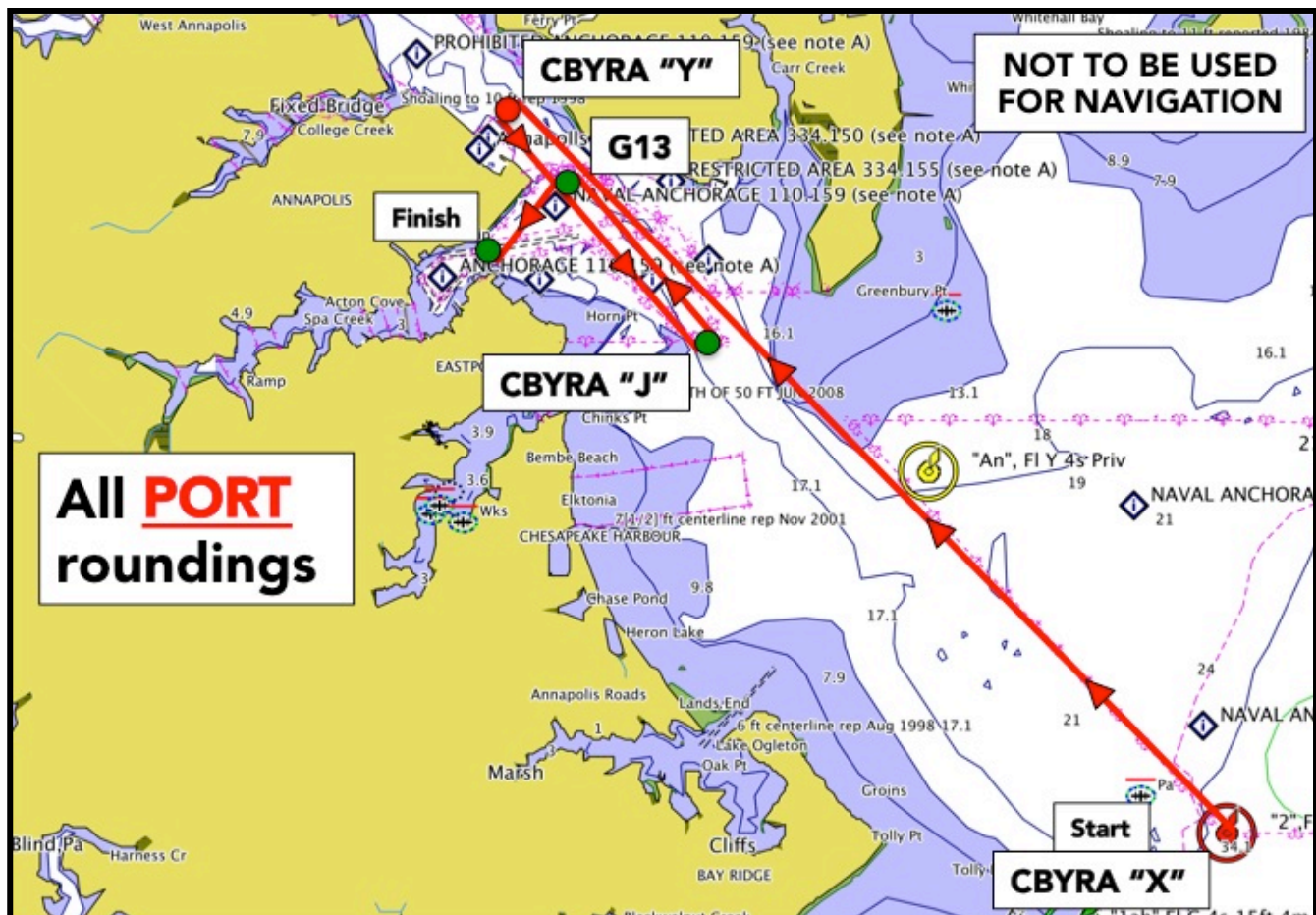


FIGURE A-1. HARBOR 20 Race Course Diagram