

## 2016 Statue of Liberty Race

July 3, 2016, Sandy Hook Bay Catamaran Club,  
Atlantic Highlands, NJ

Organizing Authority: Sandy Hook Bay Catamaran Club

### SAILING INSTRUCTIONS

#### 1 RULES

- 1.1 The regatta will be governed by the *rules* as defined in *The Racing Rules of Sailing 2013-2016 (RRS)*. If there is a conflict between languages the English text will prevail.
- 1.2 This is an international competition; therefore, pursuant to RRS 88.2 the US Sailing prescription to RRS 40 will not apply.

#### 2 NOTICES TO COMPETITORS & INFORMATION MEETING(S)

- 2.1 Notices to competitors will be posted on the notice board located at the Cat House side of the Club Notice Board at the entrance to the beach. NOTE: White boards may be used for informal communications like weather reports, provisional results, etc. but they are not OFFICIAL notice boards.
- 2.2 There will be a competitors' meeting on Sunday, July 03, 2016 at 0900 hours in or just outside the Cat House. Other competitors' meetings may be scheduled as required.

#### 3 CHANGES TO SAILING INSTRUCTIONS

- 3.1 Any change to the sailing instructions will be posted not less than 30 minutes prior to the first scheduled race on the day it will take effect, except that any change to the schedule of races will be posted prior to the previous day's protest time limit.

#### 4 SIGNALS MADE ASHORE

- 4.1 Signals made ashore will be the flag pole outside the Cat House.
- 4.2 When flag AP is displayed ashore, '1 minute' is replaced with 'not less than 30 minutes' in race signal AP. *This changes Race Signal AP.*

#### 5 SCHEDULE OF RACES

- 5.1 The scheduled first warning signal:
  - 5.1.1 Sunday – 07/03 is 1000.
  - 5.1.2 Monday – 07/04 is 1000 if the Statue Race is to be re-sailed.

#### 6 CLASS FLAGS AND ORDER OF STARTS

- 6.1 For the Statue of Liberty Distance Race, there will be two starts using 5 minute sequences according to RRS 26.
- 6.2 The first start will be for large catamarans using a yellow class flag and the second start will be for beach catamarans using a pink class flag.

#### 7 RACING AREA

- 7.1 Sunday, July 3 2016. The racing area will be from the Sandy Hook Bay to the Lower and Upper Bay of New York Harbor.

#### 8 THE COURSES

- 8.1 The course is a distance race with 1) a start, 2) one mark left to port at the Earle Naval Pier security zone, 3) a government channel marker near the Statue of Liberty {G "35" Fl G 4s Gong (40-41-39.570N, 074-02-00.305W) }, or the Statue of Liberty (outside the security zone), 4) the Earle security zone mark left to starboard and 5) a finish. Reference Attachment A.

#### 9 MARKS

- 9.1 An inflatable mark will be placed at the Northeast corner of the Earle Navy Security Zone. Its color will be announced at **the initial competitor's meeting**. This mark must be left to port on the way to the Statue of Liberty and must be left to starboard on the way back to the finish.

- 9.2 Because of expected low tides at the Statue of Liberty the race will have an alternate rounding mark near the Statue of Liberty. Competitors can choose to either sail around the Statue of Liberty staying outside the security zone or they can round a channel marker G "35". Each can be rounded in either direction. If rounding the Statue of Liberty, competitors must stay out of the security zone that circles the Statue and is marked by a security zone with small white markers. You cannot sail inside the security markers. Failure to stay out of the zone will result in a DSQ.
- 9.3 The starting and finishing marks will be announced at the **initial competitor's meeting**.
- 9.4 A barging (keep away) buoy may be attached to the RC signal boat. Rule 31 shall not apply to the barging (keep-away) buoy itself, but shall apply to the RC Signal boat. *This changes RRS 31.*

## **10 AREAS THAT ARE OBSTRUCTIONS**

- 10.1 The Earle Navy Security Zone and the security zone around the statue of Liberty and Ellis Island.

## **11 THE START**

- 11.1 Races will be started using rule 26 with the warning signal made 5 minutes before the starting signal.
- 11.2 The starting line will be between a staff displaying a **red/orange shape/flag** on the Race Committee boat and the course side of the mark as described in instruction 9.4.
- 11.3 Boats whose warning signal has not been made, shall avoid the starting area during the starting sequence for other races. The starting area is defined as an area extending approximately 100 feet in all directions from the starting line.
- 11.4 A boat starting later than ten minutes after her starting signal will be scored Did Not Start without a hearing. *This changes RRS A4.*

## **12 THE FINISH**

- 12.1 The finishing line will be between two inflatable marks (color to be announced at the initial competitors meeting) aligned nearly perpendicular to the beach. Competitors may finish in either direction.

## **13 PENALTY SYSTEM**

- 13.1 The Two-Turns Penalty is replaced by the One-Turn Penalty. This changes RRS 44.1.

## **14 TIME LIMITS AND TARGET TIMES**

- 14.1 The race will be abandoned if no boat makes it to the Verrazano Narrows Bridge in 3 hours. After the first non foiling boat passes under the bridge, the rest of the competitors will have 50% more time to reach the bridge. For example, if the first non foiling boat reaches the bridge at 2 hours, the rest of the fleet must reach the bridge in 3 hours. {2hrs + .5(2hrs) = 3 hrs}. REMEMBER, when you reach the bridge you have only completed roughly one third of the course. The race committee will turn back boats that have not made it in the allotted time.
- 14.2 **IF YOU ARE ASKED TO TURN BACK, TURN BACK!** You will still be scored and will be competing for the Little Ms Liberty Cup (Awards). A shorten course flag, Code S, will be displayed
- 14.3 Boats may be finished on the course at the discretion of the RC. The RC determines the method and order of finishing. *This changes RRS 35 and A4.*

## **15 PROTESTS AND REQUESTS FOR REDRESS**

- 15.1 Protest forms are available at the notice board as described in instruction 2.1. Protests and requests for redress or reopening shall be delivered there within the appropriate time limit.
- 15.2 The protest time limit is 60 minutes after the last boat finishes.
- 15.3 Notices will be posted no later than 30 minutes after the protest time limit to inform competitors of hearings in which they are parties or named as witnesses. Hearings will be held in the protest room, the location of which shall be posted on the official notice board, beginning at the time posted on the notice board.
- 15.4 Notices of RC or Protest Committee (PC) protests will be posted to inform boats under RRS 61.1(b).

## **16 SCORING**

- 16.1 All boats will be racing using the current Small Catamaran Handicap Ratings System (SCHRS). Sails carried are considered sails used. If you bring it with you, you will be rated as if you used it. If the boat's SCHRS rating is modified by extra sails, crew or other non-class standard equipment, the boat is a different "Class".
- 16.2 The largest fleet must be sailing within the class rules. Weight correction or other correction factors will not be used when scoring the largest fleet. (See trophies c) The count of participants in the largest fleet will be determined by the amount of boats that register for the race. If there is a tie for the largest class among more than one class, winners of each class shall have their names engraved on the trophy.

16.3 The Single Handed winner is based on best corrected time finish for a boat that is normally sailed single handed.

## **17 SAFETY REGULATIONS**

17.1 In the beach catamaran class a personal flotation device shall be worn, properly fastened, from dock to dock by competitors while launching and when sailing, except briefly while adjusting clothing or equipment. The penalty for failure to comply with this rule shall be at the discretion of the protest committee, and may result in disqualification. Pursuant to the US Sailing prescription to RRS 88.2 the US Sailing prescription to RRS 40 will not apply.

17.2 A boat that retires from a race shall notify the RC as soon as possible.

## **18 REPLACEMENT OF CREW OR EQUIPMENT**

18.1 Substitution of competitors will not be allowed without prior written approval of the Race Committee.

18.2 Substitution of damaged or lost equipment will not be allowed unless authorized by the Race Committee. Requests for substitution of equipment shall be made to the Race Committee at the first reasonable opportunity.

## **19 EQUIPMENT AND MEASUREMENT CHECKS**

19.1 A boat or equipment may be inspected at any time for compliance with the class rules and sailing instructions. On the water, a boat can be instructed by a RC equipment inspector or measurer to proceed immediately to a designated area for inspection.

## **20 COMMUNICATION**

20.1 A VHF Radio or cell phone is required to be carried. The RC will monitor a channel to be announced at the initial competitors meeting. Competitors shall not hail the Race Committee unless it is an emergency. If the time limit has expired, the Race Committee will make every attempt to notify competitors via radio communication. The FLEET PHONE number is 732-291-9622. GPS electronics are allowed.

## **21 AWARDS**

21.1 Trophies will be awarded after the conclusion of the Statue of Liberty Race.

21.2 Perpetual trophies will be awarded to the following finishers according to their respective deed of gifts.

a) Line Honors, first boat to complete the course.

b) Corrected time winner

c) First boat to finish of the largest class entered.

d) First single-handed finisher, Corrected time.

(Open to any normal single crew boat, sailing a boat which normally is sailed with a crew of 2, is excluded).

e) The Founders Trophy to be awarded the best corrected time finisher from the Sandy Hook Bay Catamaran Club.

f) The "Little Ms Liberty Cup" will be awarded to the best corrected time of those boats turned around at the bridge. Those sailors winning the trophy(s) shall cause to have their names to be engraved per the individual deeds.

## **22 DISCLAIMER OF LIABILITY**

Competitors participate in the regatta entirely at their own risk, See RRS 4, Decision to Race. It is the personal responsibility of each competitor to determine their level of safety. If wind, wave or water conditions make you doubtful of your ability to handle the conditions safely, it is your decision and your decision only to continue sailing or to retire. The organizing authority will not accept any liability for property damage, personal injury or death sustained in conjunction with, prior to, during, or after the regatta.

## **23 INSURANCE**

23.1 Each participating boat shall be insured with valid third-party liability insurance with a minimum coverage of \$100,000 (USD) per event or the equivalent.

## **24 SPECIAL NOTES**

24.1 Any boat receiving 'hands on' assistance from rescue/mark boats will be scored Did Not Finish. *This changes RRS rule A5.* The RC may decide when a boat or crew needs assistance.

24.2 The RC may request redress for competitors who exhibit extraordinary sportsmanship.

## Attachment A – Illustrating the Statue of Liberty Race

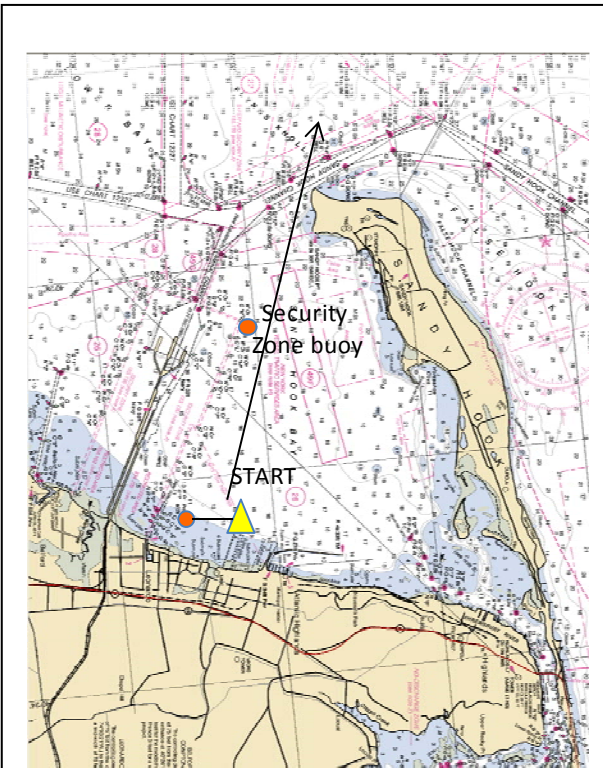


Fig A1: Start between boat and starting mark, leave security zone buoy to port. Stay out of Navy security zone marked by white buoys.

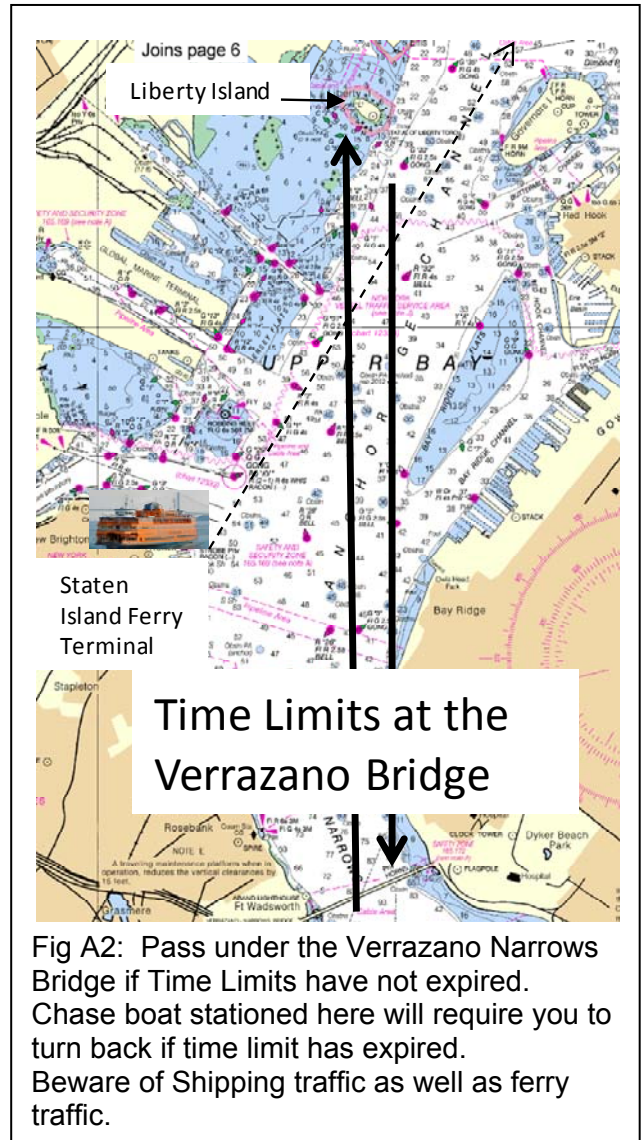


Fig A2: Pass under the Verrazano Narrows Bridge if Time Limits have not expired. Chase boat stationed here will require you to turn back if time limit has expired. Beware of Shipping traffic as well as ferry traffic.

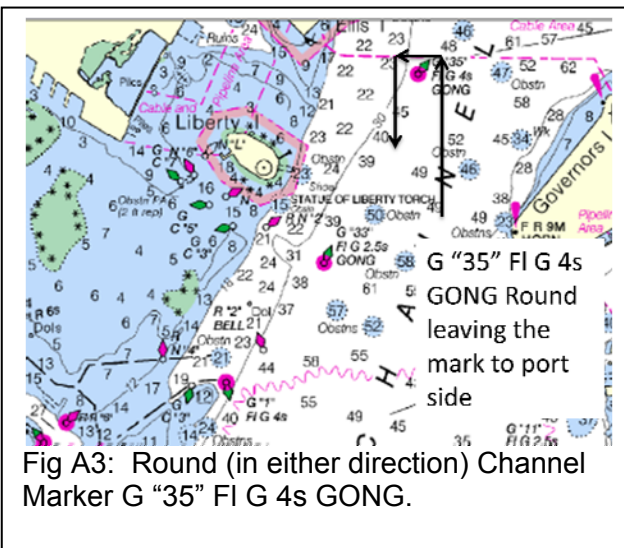


Fig A3: Round (in either direction) Channel Marker G "35" FI G 4s GONG.

## Attachment A (cont.)– Illustrating the Statue of Liberty Race

