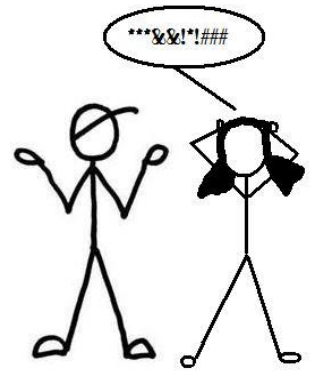




Mixed Doubles Regatta

Revised 9/9/2016



Galveston Bay Texas

September 11, 2016

Galveston Bay Cruising Association

1500 Marina Bay Dr. Suite 1592 Clear Lake Shores, TX

1. RULES

The regatta will be governed by the *rules* as defined in the current 2013-2016 *Racing Rules of Sailing*, the Notice of Race, any OD Class Rules and these Sailing Instructions.

The following RRS are modified herein:

Sailing Instruction 6.2 modifies RRS 62.1(a)

Sailing Instruction 9.2 & 9.3 modifies RRS 26

Sailing Instruction 13 modifies RRS 61

Sailing Instruction 15 modifies RRS 35

2. NOTICES TO COMPETITORS

Notices to Competitors will be posted at:

https://www.regattanetwork.com/clubmgmt/applet_club_events.php?CLUB_ID=162.

3. CHANGES TO THE SAILING INSTRUCTIONS

Any change to the sailing instructions or notice of race will be posted before 1000 on the day it will take effect.

4. WARNING SIGNAL

4.1 The warning gun for the first race of the Mixed Doubles Regatta on Sunday will be no earlier than 1300.

Subsequent races for each class will follow as soon as possible after the end of the previous race.

5. Racing Area

The racing area will be in the part of Galveston Bay between Seabrook and the Houston Ship Channel, and between San Leon and the Bayport Ship Channel. Boats shall not enter the Houston Ship Channel or Bayport Ship Channel while *racing*. The Houston Ship Channel and the Bayport Ship Channel are designated as obstructions.

6. RADIO COMMUNICATION

6.1 Radio communication will be conducted on VHF channel 69.

6.2 In addition to signaling Individual Recalls in accordance with RRS 29.1, as a courtesy, the Race Committee will attempt to broadcast the names or sail numbers of boats that have started early. Failure to make such a broadcast, failure of a boat to receive that broadcast, a boat's order in that broadcast, or the promptness of that broadcast will not be grounds for redress. This modifies RRS 62.1(a).

7. CHECK-IN PROCEDURE

All yachts intending to race shall check in with the Race Committee on VHF Channel 69 prior to their warning signal.

8. START LINE / FINISH LINE

The Start Line / Finish Line will be approximately 0.6nm south of Clear Lake channel marker 1, between an Orange Flag displayed from the Signal Boat and the course side of a nearby Orange Mark.

9. THE START

9.1 The starting line will be between the staff displaying an orange flag on the Signal Boat on the starboard end and the course side edge of a nearby Mark at the port end of the line.

9.2 This is a reverse start (pursuit) race, with the (GPS) start time for each boat based on its PHRF rating following the 1300 hours. See the accompanying Appendix for assigned boat start times. This modifies RRS 26

9.3 The Race Committee will give no additional starting signals, except to monitor and call individual boats OCS prior to their assigned start time with sound and the individual recall flag. This modifies RRS 26. Any boat(s) signaled as OCS at their respective starting *time* shall thereafter sail from the course side across the starting line or one of its extensions to the pre-start side before *starting*.

9.4 The signal boat *may* broadcast occasional time checks on VHF 69 until all boats have started.

10. COURSE and MARKS

10.1 Courses will be signaled by the numeral pennant correlating with the course diagrams described in Appendix A. The approximated heading and distance to each mark are also described.

10.2 Start will be Pursuit style according PHRF rating as described in Appendix B for the primary race. If a second race is attempted, the start will be according to the same schedule with adjustment to the next top of the hour.

10.3 Fixed mark courses will use marks "E", "H", and "M52" Approximate coordinates and description of the marks are:

Mark	Approximate Coordinate	Description
Start/Finish Gate	N 29° 32.567' W 094° 59.545'	<i>RC Signal boat "Blue Jacket" and a nearby orange Tetrahedron</i>
E	N 29° 35.787' W 094° 56.935'	<i>The Low Range Marker (Upper Range "A") in Galveston Bay. The mark is an orange and white structure near Houston Ship Channel Marker #73, 0.23 nm NNW of the old low range.</i>
H	N 29° 33.255' W 094° 56.542'	<i>A platform located in Galveston bay, approximately 1.3 nm WSW of the Houston Ship Channel marker #65.</i>
M52	N 29° 31.808' W 094° 55.597'	<i>Galveston Shellfish Harvesting Boundary Marker</i>

Boats shall not enter the Houston Ship Channel. The Houston Ship Channel is designated as an Obstruction. A chart showing the relative position of the marks will be available as Appendix A. This chart is schematic in nature and is not to be used for navigation.

In the event a mark is missing, boats shall round the coordinates of the missing mark.

11. THE FINISH

The Finish Line will be between a staff displaying an orange flag on the Signal Boat on the port end and the course side edge of the starboard end Orange Mark.

12. Shorten Course

If the Race Committee displays the "S" code flag for weather reasons, all classes will sail the shortened course. The race committee is prepared to recalculate the adjustments for the shortened course.

13. PROTESTS

The protest and redress procedures for this regatta will utilize basic elements of the new RRS Appendix T, a US Sailing Prescription. Protests shall be communicated to the Race Committee before leaving the race area and must be filed in writing within 2 hours of the last boat finishing. This modifies RRS 61. Protests shall be filed at the GBCA office.

14. SAFETY and WITHDRAWING PROCEDURES

14.1 Attention is called to RRS 4: Decision to Race, "The responsibility for a boat's decision to participate in a race or to continue *racing* is hers alone."

14.2 The Race Committee places high priority on accounting for every yacht participating in a race. It is imperative that any yacht withdrawing from a race makes its best and most persistent efforts to notify other parties of such withdrawal at the earliest opportunity. Withdrawing yachts should make every effort to contact the Race Committee and/or other nearby yachts to communicate the withdrawal via VHF channel 69. . If radio communication is unavailable, call the Race Committee phone number: 281-216-4082 and leave a message. Text messages to this number are also acceptable. Proper reporting of a withdrawal should include; yacht name, sail number and skipper's name.

14.3 Mixed Doubles Regatta – Code flag "Y" **MAY BE** displayed from the RC Signal boat in accordance with the Racing Rules of Sailing 27.1.

15. TIME LIMIT

None, except we have an après race party scheduled the GBCA Lounge Deck Sunday. This modifies RRS 35.

16. SCORING

The Race Committee will score the race with reverse start (pursuit) style race using the performance handicapping racing formula, time on distance, for each yacht, as determined by the Race Committee.

17. Schedule of Events

17.1 A Competitors Briefing for both events will be held at the GBCA office at 0900 Saturday, August 20, 2016.

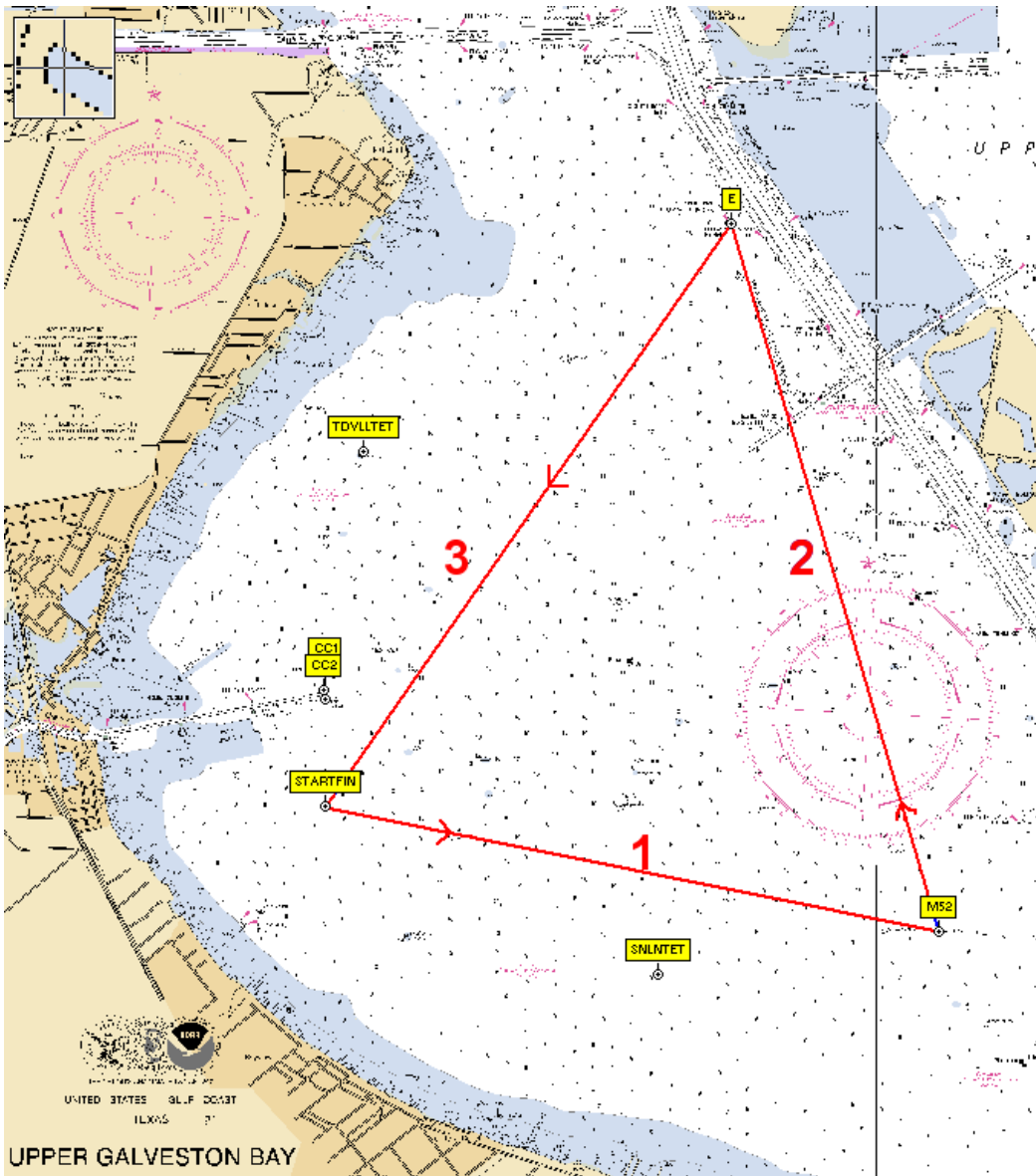
17.2 These are single day regattas, therefore, as many races as practical will be run during each regatta.

Subsequent races for each class will be started as soon as possible after the class has finished the prior race. The warning signal for the first race of the regatta will not be before 1300 hours Sunday, September 11th, 2016.

17.3 Refreshments and trophy presentations for the Mixed Doubles Regatta will be on Sunday, September 11, 2016 at the GBCA clubhouse following the conclusion of the last race.

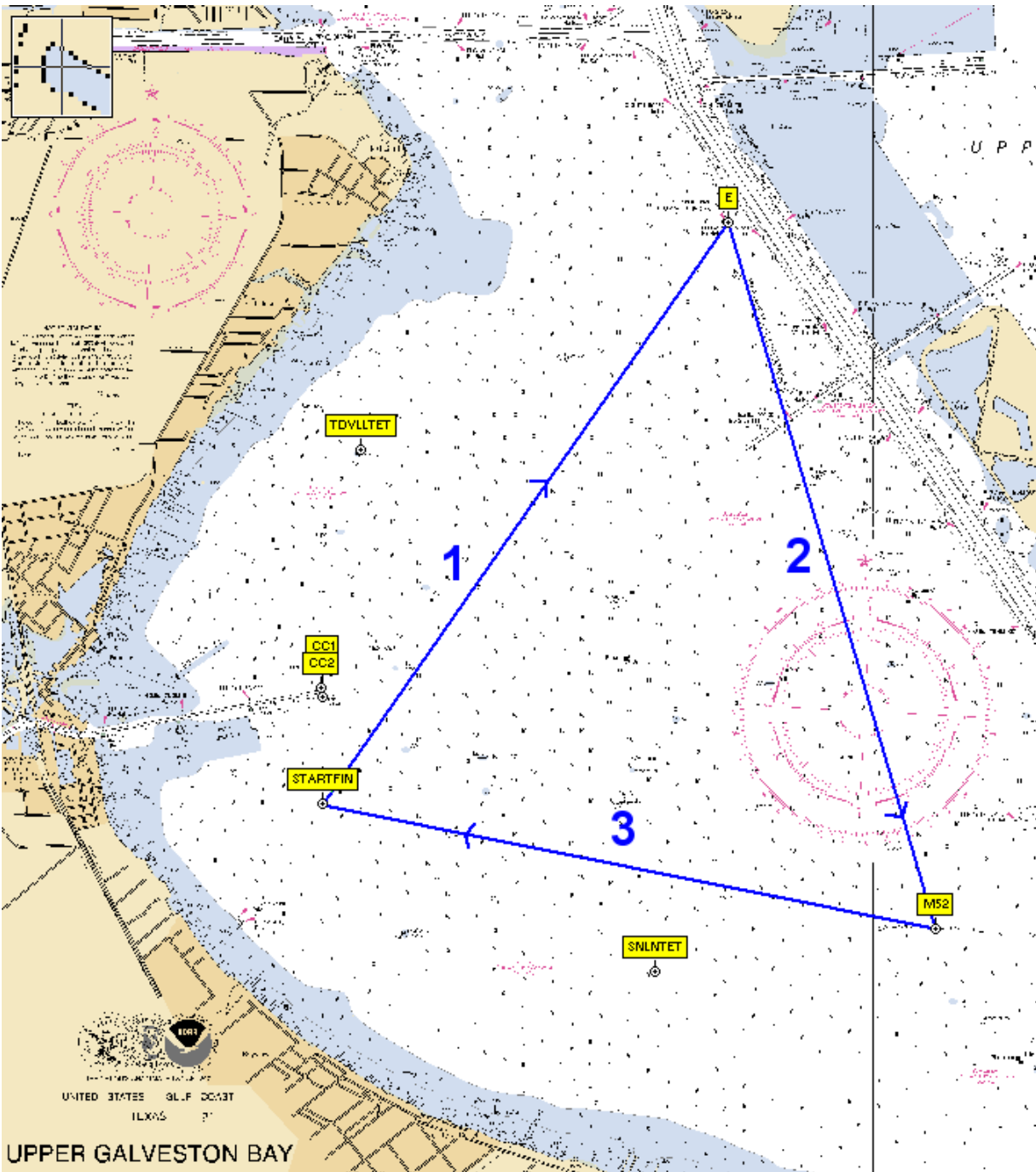
This page intentionally blank

Appendix A - Course 1 "Rum Forward"



Mark	Bearing	Distance	Rounding
Start > M52	99	3.51	P
M52 > E	341	4.13	P
E > Finish	212	3.98	P
Total		11.62	

Appendix A - Course 2 "Rum Reverse"



Mark	Bearing	Distance	Rounding
Start>E	032	3.98 nm	S
E> M52	161	4.13	S
M52> Finish	279	3.51	S
Total		11.62	

Appendix B - Courses 1 and 2 "Rum"

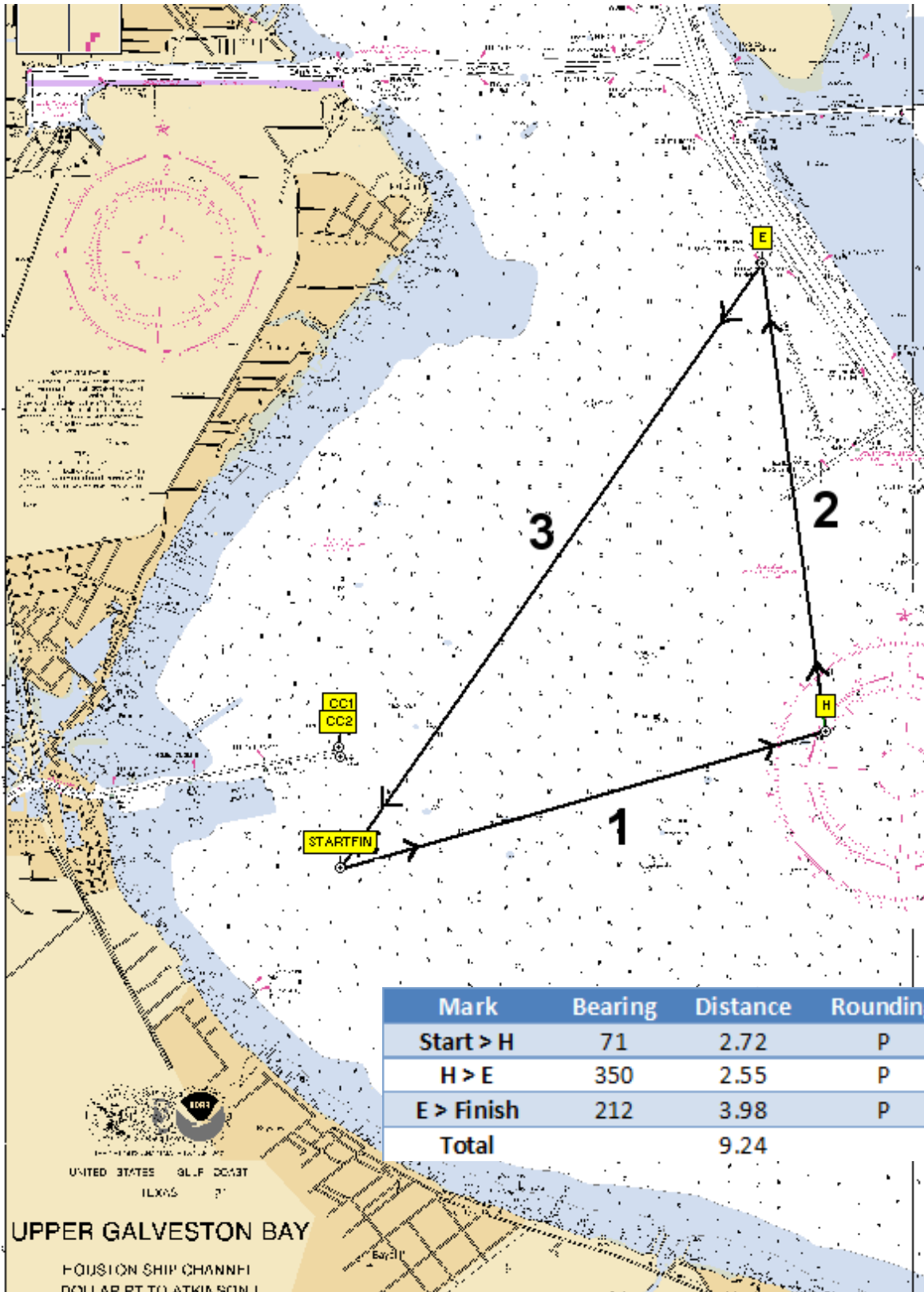
Pursuit Start Sheet For Galveston Bay Cruising Association 2016 GBCA Mixed Doubles Regatta Date: September 11th 2016

Start Time: Distance: MAX PHRF:

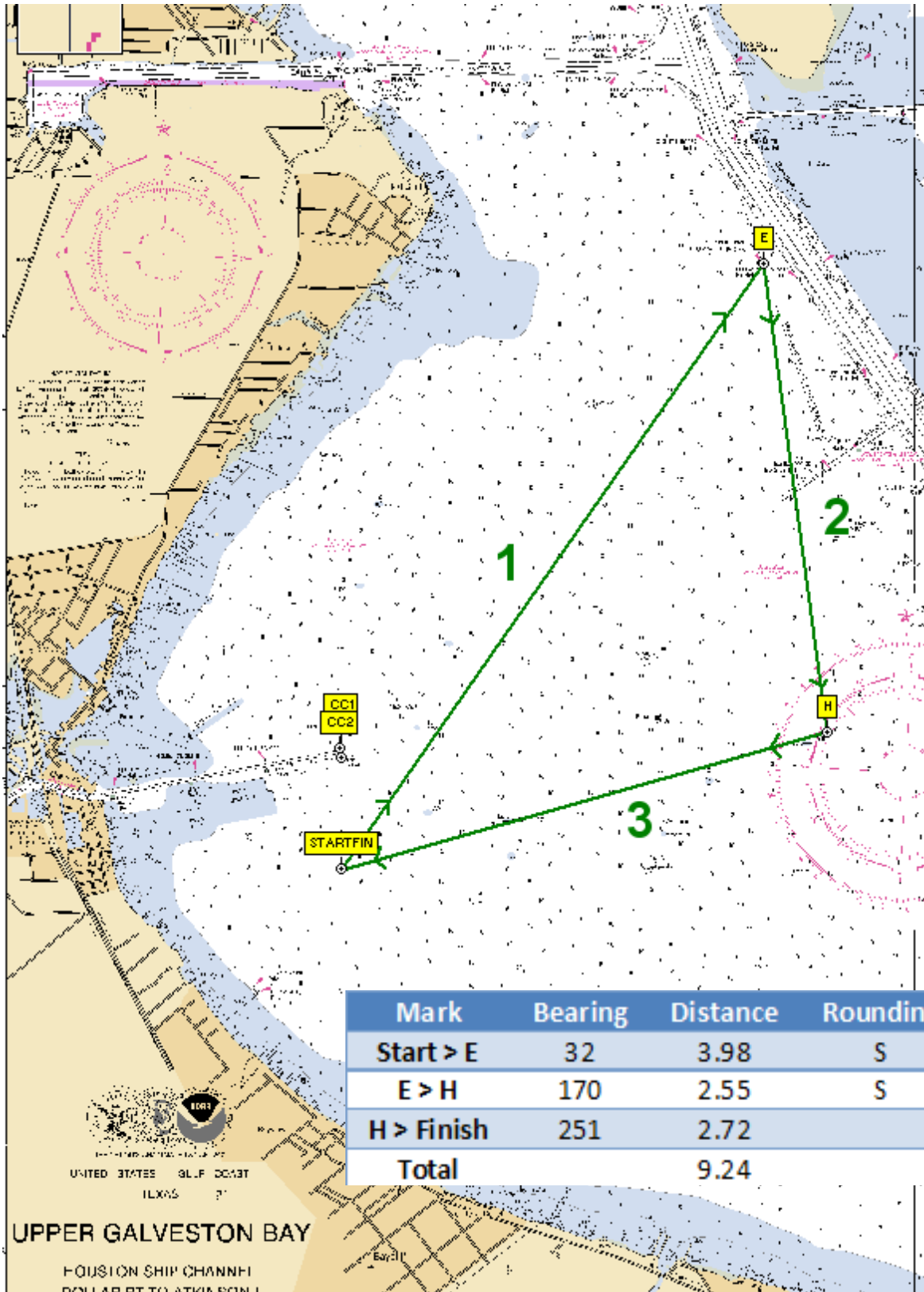
Start	Sail#	Skipper	Boat Name	Class/Fleet	PHRF
13:00:00	none	E Wayne Alderman	Stardust	GBCA Cruising Club	282
13:06:35	196	Andrew Clark	Ox-Bow	GBCA Cruising Club	248
13:12:47	3371	Bill Jenko	Sea Gypsy	GBCA Cruising Club	216
13:15:41	133	Ronald Eddleman	Stellar of Course	GBCA Cruising Club	201
13:19:22	392	Rick Duste	Loose Cannon	PHRF Non-Spin	182
13:19:22	498	Robbie Allen		PHRF Non-Spin	182
13:20:55	578	Gary L Thies	Student Driver	PHRF Spin	174
13:20:55	919	Bruce Martin		PHRF Spin	174
13:21:30	2342	Jason Seibert	Rodeo Clown	GBCA Cruising Club	171
13:21:42	291	Augie Lipsanen	NONAME	GBCA Cruising Club	170
13:22:05	60120	Nicole Laster	Bad Girl	PHRF Non-Spin	168
13:22:16	38109	Thomas R Sherrill Jr	Wandering Star	GBCA Cruising Club	167
13:22:51	165	John Welch	Mischief	GBCA Cruising Club	164
13:25:22	53	Chris Haas	SolAire	PHRF Non-Spin	151
13:25:57	584	Jim Foster	Big D	PHRF Non-Spin	148
13:26:20	None	Daniel Knierien	The Gail Mary	GBCA Cruising Club	146
13:28:28	40860	Tom Meeh	Tomfoolery II	PHRF Non-Spin	135
13:28:52	717	Greg Green	Alive and Free	GBCA Cruising Club	133
13:28:52	28	Gary Trinklein	Toccata	PHRF Non-Spin	133
13:31:23	537	Scott Tuma	Honey Badger	PHRF Spin	120
13:35:03	98368	Gustavo Zapater	Southern Cross	PHRF Non-Spin	101
13:37:11	5101	Suzy Bradford	Pingo	PHRF Spin	90
13:37:46	296	Andrea Zaitte	Stinger	PHRF Non-Spin	87
13:38:21	168	Walter Barnett	Osprey	GBCA Cruising Club	84
13:38:56	162	Tom Sutton	Leading Edge	PHRF Non-Spin	81
13:38:56	181	Albrecht Goethe	Hamburg	PHRF Non-Spin	81
13:39:31	649	Bill Lakenmacher	Radiance	PHRF Spin	78

This page intentionally blank

Appendix A - Course 3 "Icicle Forward"



Appendix A - Course 4 "Icicle Reverse"



Appendix B - Courses 3 & 4 "Icicle" Start Times

Pursuit Start Sheet For
Galveston Bay Cruising Association
2016 GBCA Mixed Doubles Regatta
Date: September 11th 2016

Start Time: **Distance:** **MAX PHRF:**

Start	Sail#	Skipper	Boat Name	Class/Fleet	PHRF
13:00:00	none	E Wayne Alderman	Stardust	GBCA Cruising Club	282
13:05:14	196	Andrew Clark	Ox-Bow	GBCA Cruising Club	248
13:10:10	3371	Bill Jenko	Sea Gypsy	GBCA Cruising Club	216
13:12:29	133	Ronald Eddleman	Stellar of Course	GBCA Cruising Club	201
13:15:24	392	Rick Duste	Loose Cannon	PHRF Non-Spin	182
13:15:24	498	Robbie Allen		PHRF Non-Spin	182
13:16:38	578	Gary L Thies	Student Driver	PHRF Spin	174
13:16:38	919	Bruce Martin		PHRF Spin	174
13:17:06	2342	Jason Seibert	Rodeo Clown	GBCA Cruising Club	171
13:17:15	291	Augie Lipsanen	NONAME	GBCA Cruising Club	170
13:17:34	60120	Nicole Laster	Bad Girl	PHRF Non-Spin	168
13:17:43	38109	Thomas R Sherrill Jr	Wandering Star	GBCA Cruising Club	167
13:18:11	165	John Welch	Mischief	GBCA Cruising Club	164
13:20:11	53	Chris Haas	SolAire	PHRF Non-Spin	151
13:20:38	584	Jim Foster	Big D	PHRF Non-Spin	148
13:20:57	None	Daniel Knierien	The Gail Mary	GBCA Cruising Club	146
13:22:39	40860	Tom Meeh	Tomfoolery II	PHRF Non-Spin	135
13:22:57	717	Greg Green	Alive and Free	GBCA Cruising Club	133
13:22:57	28	Gary Trinklein	Toccata	PHRF Non-Spin	133
13:24:57	537	Scott Tuma	Honey Badger	PHRF Spin	120
13:27:53	98368	Gustavo Zapater	Southern Cross	PHRF Non-Spin	101
13:29:34	5101	Suzy Bradford	Pingo	PHRF Spin	90
13:30:02	296	Andrea Zaitte	Stinger	PHRF Non-Spin	87
13:30:30	168	Walter Barnett	Osprey	GBCA Cruising Club	84
13:30:58	162	Tom Sutton	Leading Edge	PHRF Non-Spin	81
13:30:58	181	Albrecht Goethe	Hamburg	PHRF Non-Spin	81
13:31:25	649	Bill Lakenmacher	Radiance	PHRF Spin	78

This page intentionally blank