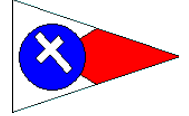


SANTA CRUZ YACHT CLUB



2016 FALL SCORE / DOUBLE HANDED SERIES

AUGUST 28, SEPTEMBER 25 AND OCTOBER 23 OF 2016

SAILING INSTRUCTIONS

244 Fourth Avenue, Santa Cruz, CA 95062 - (831) 425-0690 - regatta@scyc.org

1. RULES

- 1.1. This series will be governed by the rules as defined in the *Racing Rules of Sailing*.
- 1.2. Rule 40 is changed to require competitors wear a personal flotation device while racing, except briefly while changing or adjusting clothing or personal equipment. Flag Y will not be displayed.
- 1.3. Rule 55 is changed by adding the following sentence to the rule: 'However, discarding biodegradable sail stops when setting a sail will not be considered a breach of rule 55.'

2. Notice To Competitors

- 2.1. Notices to Competitors will be posted on the Official Notice Board and may be posted on-line.
- 2.2. The SCYC Official Notice Board is located in the northeast window of the Clubhouse, upper level.
- 2.3. On the water, the Race Committee may use VHF channel 68 for communication.

3. Changes to Sailing Instructions

- 3.1. Any change to these sailing instructions will be posted ashore before 1100 on the day it will take effect, except any change to the schedule of races will be posted by 2000 on the day before it will take effect.

4. Signals Made Ashore

- 4.1. Signals made ashore will be displayed from the SCYC Clubhouse Flagpole.
- 4.2. When flag AP is displayed ashore, '1 minute' is replaced with 'not less than 60 minutes' in race signals AP.

5. Schedule of Races

- 5.1. Dates of racing and number of races for all classes:

August 28, 2016	One Race Starting Near Moss Landing
September 25, 2016	Two Races Starting Near Santa Cruz Start Mark
October 23, 2016	Two Races Starting Near Santa Cruz Start Mark
- 5.2. The scheduled time of the **August 28 race warning signal is 1255**.
- 5.3. The scheduled time of the warning signal for the first race on September 25 and October 23 is 1225.

6. Class Flags

Class	PHRF Rating	Class Flag
PHRF-A	80 or less	F
PHRF-B	Greater than 80	E
Double Handed	All ratings	D
Jib & Main A	181 or less	K
Jib & Main B	Greater than 181	J

7. Racing Area

- 7.1. The racing area will be between Davenport and Moss Landing and extending up to ten nautical miles offshore.
- 7.2. On August 28 all classes will start in Moss Landing and Race to a Finish off Santa Cruz
- 7.3. On September 25 and October 23 all classes will Start and Finish near Santa Cruz.

8. The Courses

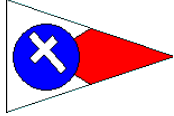
- 8.1. Attachment A shows the courses, including the approximate position of the marks, the order in which marks are to be passed and the side on which each mark is to be left.
- 8.2. Charts (not for use for navigation) are provided in Attachment B to show the relative positions of the marks.
- 8.3. The course will be indicated by the display of a number pennant(s) corresponding to the course number.

9. Marks

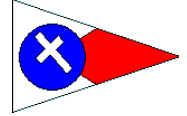
- 9.1. Attachment A describes the start and finishing lines and rounding marks.
- 9.2. If a fixed mark is missing, the race committee will attempt to replace it with an inflatable mark at approximately the same location. If no replacement mark is in place, the race shall be abandoned.
- 9.3. If the signal boat or start/finish mark is not on station, it may be replaced by a red ball buoy.

10. The Start

- 10.1. The starting line for Moss Landing started races will be between mark ML7 and a temporary buoy approximately 550 yards to the SSW and roughly perpendicular to ML5/Santa Cruz Wharf



SANTA CRUZ YACHT CLUB



2016 FALL SCORE / DOUBLE HANDED SERIES

AUGUST 28, SEPTEMBER 25 AND OCTOBER 23 OF 2016

SAILING INSTRUCTIONS

244 Fourth Avenue, Santa Cruz, CA 95062 - (831) 425-0690 - regatta@scyc.org

10.2. The starting line for Santa Cruz started races will be between mark S (Start Mark) and an orange flag displayed from a staff aboard the signal boat

10.3. Between a boat's preparatory signal and her start, she shall not hoist any part of her spinnaker higher than the main boom gooseneck.

10.4. Boats who are identified On Course Side at the start may be hailed on VHF channel 68. Failure to make a broadcast, the time or contents of a broadcast will not be grounds for a request for redress. A hail shall not be considered outside assistance. This changes rules 41 and 62.1(a).

11. The Finish

11.1. The finishing line for Moss Landing started races will be between Government Buoy and a blue signal flag displayed near the southeastern end of Santa Cruz Municipal Wharf

11.2. The finishing line for Santa Cruz based races will be between mark S (Start Mark) and a blue signal flag displayed from a staff aboard the signal boat.

11.3. If the race committee is absent when a boat finishes, she should report her finishing time and her position in relation to nearby boat to the race committee at the first reasonable opportunity.

12. Penalty System

12.1. Rule 44.1 is changed so that the Two-Turns Penalty is replaced by the One-Turn Penalty.

13. Protests and Requests for Redress

13.1. Protest Forms are available at the SCYC Regatta Shed and Clubhouse. Protests and requests for redress or reopening shall be delivered to the Clubhouse bar within the appropriate time limit.

13.2. For each class, the protest time limit is sixty (60) minutes after the signal boat has arrived at her berth in Santa Cruz Harbor, or the Race Committee concludes recording finishes on Santa Cruz Municipal Wharf. The protest filing time limit will be posted.

13.3. Notices will be posted no later than thirty (30) minutes after the protest filing time limit to inform competitors of hearings in which they are parties or named as witnesses.

14. Scoring

14.1. Three (3) races are required to constitute a series.

14.2. When fewer than five races have been completed, a boat's score will be the total of her race scores.

14.3. When five races have been completed, a boat's score will be the total of her race scores excluding her worst score

15. Safety Regulations

15.1. Check In. Prior to the display of the first warning signal for the day, all competitors are requested to check in with the Race Committee via verbal or VHF communication on channel 68.

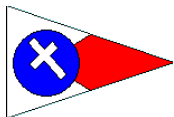
15.2. A boat that retires from a race shall notify the race committee as soon as possible.

16. Prizes

16.1. Prizes will be awarded at the discretion of the organizing authority on the basis of participation.

16.2. There will be an awards ceremony at the SCYC clubhouse for daily prizes immediately after racing and a final awards ceremony on October 23th following racing.

16.3. The winner of any class having three or more boats entered will be eligible for the Cliff McNamara Champion of Champions regatta.



SANTA CRUZ YACHT CLUB

2016 FALL SCORE / DOUBLE HANDED SERIES

AUGUST 28, SEPTEMBER 25 AND OCTOBER 23 OF 2016

SAILING INSTRUCTIONS

244 Fourth Avenue, Santa Cruz, CA 95062 - (831) 425-0690 - regatta@scyc.org

ATTACHMENT A – COURSES

All marks followed by a “(s)” in the Mark Rounding Order tables below shall be rounded to **STARBOARD**. All other marks shall be rounded to **PORT**.

Courses for Moss Landing Started Race:

Course	Mark Rounding Order	Length
0	Moss Landing Start Natural Bridges (s) SC7 Santa Cruz Municipal Wharf Finish	17.71
1	Moss Landing Start Wharf Mark (s) SC Municipal Wharf Finish	13.87

Mark Positions & Descriptions for the Moss Landing Started Race: Start line between ML7 and Elkhorn Temporary Start Bouy. Finish Line between Santa Cruz Municipal Wharf and Government Bouy. Each of these are are not *rounding marks*. Natural Bridges, SC7, and Wharf marks below are *rounding marks*

Moss Landing Start - ML7	36° 48.90'N – 121° 48.192 'W	Yellow can marked “ML7”
Elkhorn Temp Start Bouy	Approximately 550 Feet SSW of ML7	Unmarked yellow can
Natural Bridges	36°56.58'N – 122°03.67' W	Unmarked yellow ball
SC7	36°56.30'N – 122°01.00' W	Yellow cylinder marked “SC7”
Wharf Mark	36°56.87'N – 122°01.24' W	Unmarked yellow ball
SC Municipal Wharf	36°57.47' - 122°01.04'W	Blue Finish Flag flown from the wharf on southeastern end of the piling structure extending from the Santa Cruz shoreline
Government	36°57.47'N – 122°00.72'W	Large white metal ball marked “CG”

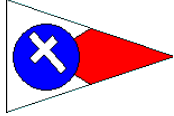
Courses for Santa Cruz Started Races:

Courses for *PHRF A* and *PHRF B* Classes

Course	Mark Rounding Order	Length
0	Start -> Wharf -> Black Pt. -> S/F Gate Wharf -> Finish	5.83
1	Start -> Wharf -> Black Pt. S/F Gate -> Wharf -> Black Pt.-> S/F Gate -> Wharf -> Finish	9.04
2	Start -> Wharf -> SC3 -> Wharf -> SC3 -> Wharf -> Finish	13.10
3	Start -> Natural Bridges -> Black Pt. -> Wharf -> Finish	9.75
4	Start -> Natural Bridges -> SC3 -> SC7 (s) -> Government (s) -> Black Pt. (s) -> Wharf -> Finish	15.29
5	Start -> Natural Bridges Finish	6.56
6	Start -> Black Pt. -> Wharf -> Black Pt. -> Wharf -> Finish	6.40
7	Start -> SC3 -> Wharf S/F Gate -> SC3 -> Wharf -> Finish	10.71
8	Start -> Mile (s) -> Government-> SC7 -> Finish	4.43
9	Start -> SC7-> SC3 -> Black Pt. -> SC7 -> Black Pt. -> SC7 - Finish	10.8
10	Start -> Government -> SC3 -> Government -> SC3 -> Government -> Finish	11.44

Courses for *Double Handed, Jib & Main A* and *Jib & Main B* Classes

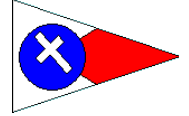
Course	Mark Rounding Order	Length
0	Start -> Wharf -> Finish	2.63
1	Start -> Wharf -> Black Pt. -> Wharf - Finish	5.82
2	Start -> Wharf -> SC3 -> Wharf -> Finish	7.86
3	Start -> Wharf -> Black Pt. -> Wharf -> SC7 -> Government (s) -> Black Pt. (s) -> Wharf -> Finish	10.01
4	Start -> Natural Bridges -> Black Pt. -> Wharf -> Finish	9.75
5	Start -> Natural Bridges -> Finish	6.56



SANTA CRUZ YACHT CLUB

2016 FALL SCORE / DOUBLE HANDED SERIES

AUGUST 28, SEPTEMBER 25 AND OCTOBER 23 OF 2016



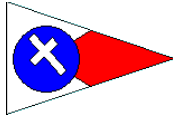
SAILING INSTRUCTIONS

244 Fourth Avenue, Santa Cruz, CA 95062 - (831) 425-0690 - regatta@scyc.org

6	Start -> Black Pt. -> Wharf -> Finish	3.20
7	Start -> SC3 -> Black Pt. -> Government -> Finish	3.85
8	Start -> Mile Buoy (s) -> Government-> SC7 -> Finish	4.43
9	Start -> SC7 -> Mile Buoy-> Black Pt. -> SC7 -> Finish	5.77
10	Start -> Government -> SC3 -> Government -> Finish	6.68

Mark Positions & Descriptions: All marks below are *rounding marks* except mark Start.

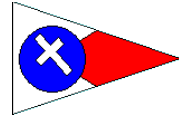
Mark Name	Mark Location	Mark Description
Black Pt.	36°57.22'N – 121°59.29'W	Unmarked yellow ball
Capitola	36°57.86'N – 121°56.60'W	Rectangular yellow float (aka: Sponge Bob)
Government	36°57.47'N – 122°00.72'W	Large white metal ball marked "CG"
La Selva Beach	36°56.39'N – 121°53.56'W	Yellow inflatable tetrahedron
Mile Buoy	36°56.35'N – 122°00.56'W	Large RW "SC" WHISTLE buoy
Needle Rock	36°56.70'N – 122°06.20'W	Yellow inflatable Tetrahedron
Natural Bridges	36°56.58'N – 122°03.67'W	Unmarked yellow ball
SC3	36°56.50'N – 121°58.00'W	Yellow cylinder marked "SC3"
SC6	36°55.00'N – 122°02.00'W	Yellow cylinder marked "SC6"
SC7	36°56.30'N – 122°01.00'W	Yellow cylinder marked "SC7"
Start/Finish or Mark "S"	36°57.09'N – 121°59.62'W	Unmarked yellow ball
S/F Gate	36°57.09'N -121°59.62'W	Gate extending between Unmarked yellow ball and the Race Committee Signal Boat
Wharf Mark	36°56.87'N – 122°01.24'W	Unmarked yellow ball



SANTA CRUZ YACHT CLUB

2016 FALL SCORE / DOUBLE HANDED SERIES

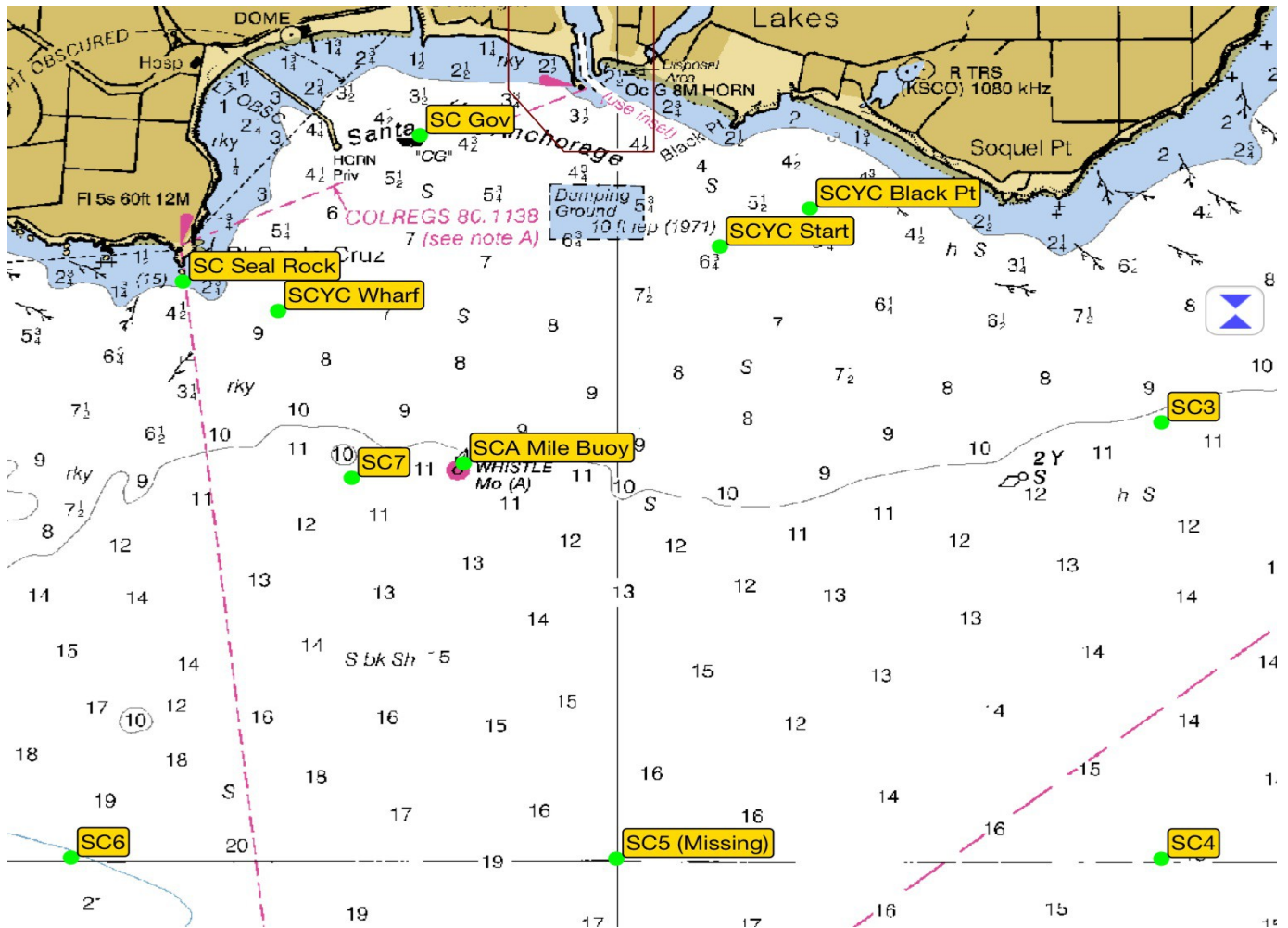
AUGUST 28, SEPTEMBER 25 AND OCTOBER 23 OF 2016

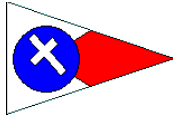


SAILING INSTRUCTIONS

244 Fourth Avenue, Santa Cruz, CA 95062 - (831) 425-0690 - regatta@scyc.org

ATTACHMENT B - SCORE RACING AREA (CHARTS ARE NOT TO BE USE FOR NAVIGATION)





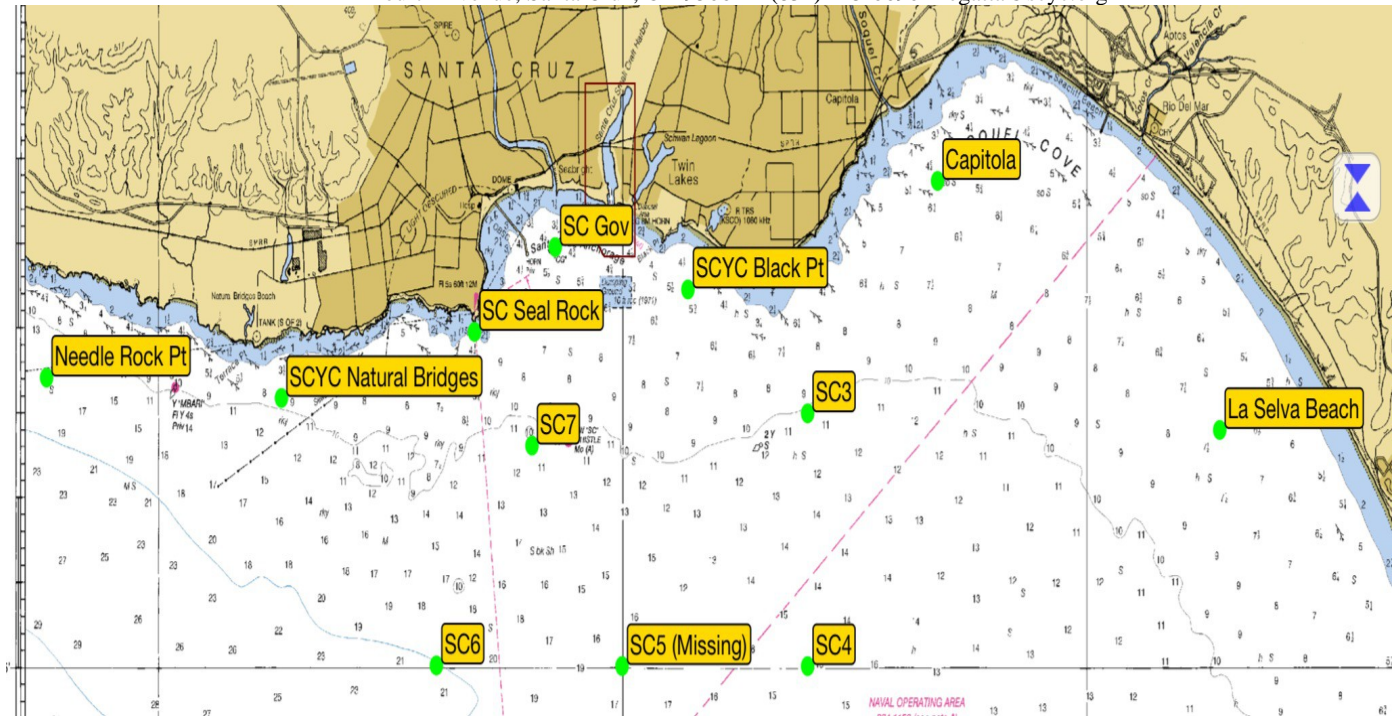
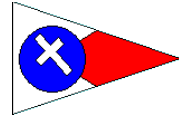
SANTA CRUZ YACHT CLUB

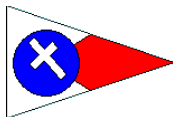
2016 FALL SCORE / DOUBLE HANDED SERIES

AUGUST 28, SEPTEMBER 25 AND OCTOBER 23 OF 2016

SAILING INSTRUCTIONS

244 Fourth Avenue, Santa Cruz, CA 95062 - (831) 425-0690 - regatta@scyc.org





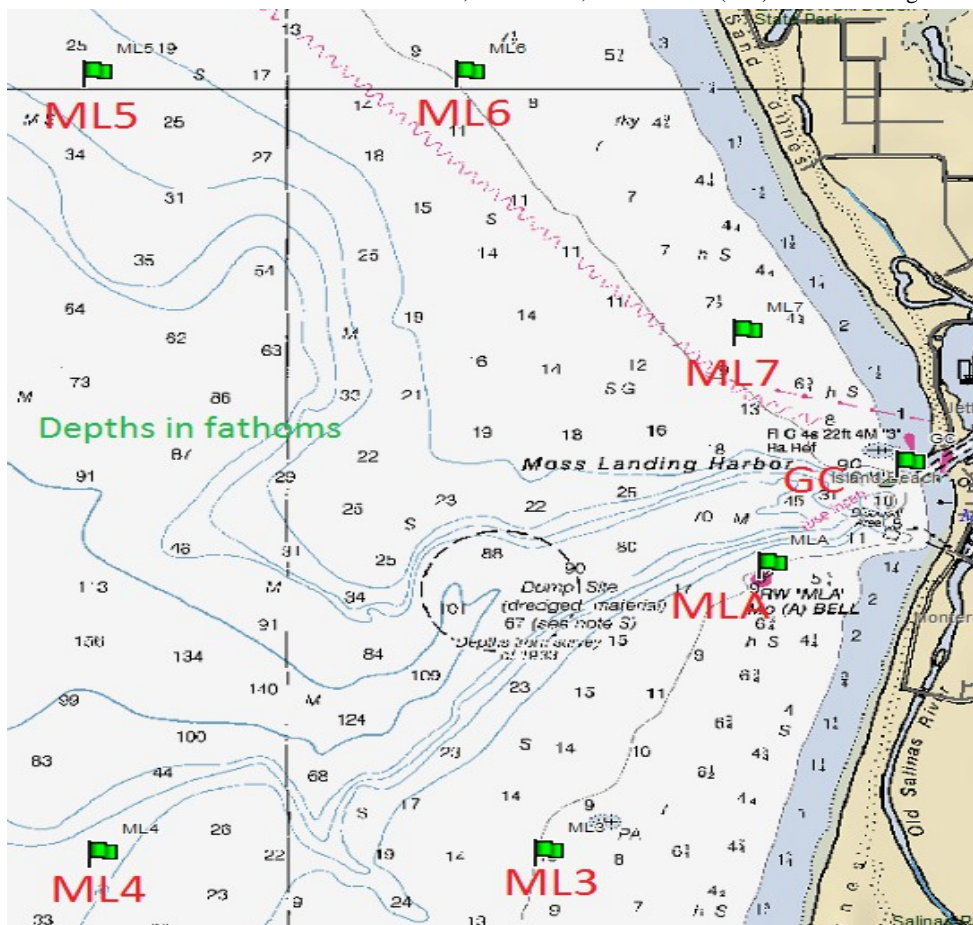
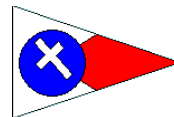
SANTA CRUZ YACHT CLUB

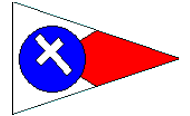
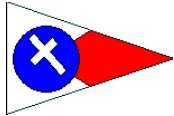
2016 FALL SCORE / DOUBLE HANDED SERIES

AUGUST 28, SEPTEMBER 25 AND OCTOBER 23 OF 2016

SAILING INSTRUCTIONS

244 Fourth Avenue, Santa Cruz, CA 95062 - (831) 425-0690 - regatta@scyc.org





SANTA CRUZ YACHT CLUB
2016 FALL SCORE / DOUBLE HANDED SERIES
AUGUST 28, SEPTEMBER 25 AND OCTOBER 23 OF 2016
SAILING INSTRUCTIONS

244 Fourth Avenue, Santa Cruz, CA 95062 - (831) 425-0690 - regatta@scyc.org

