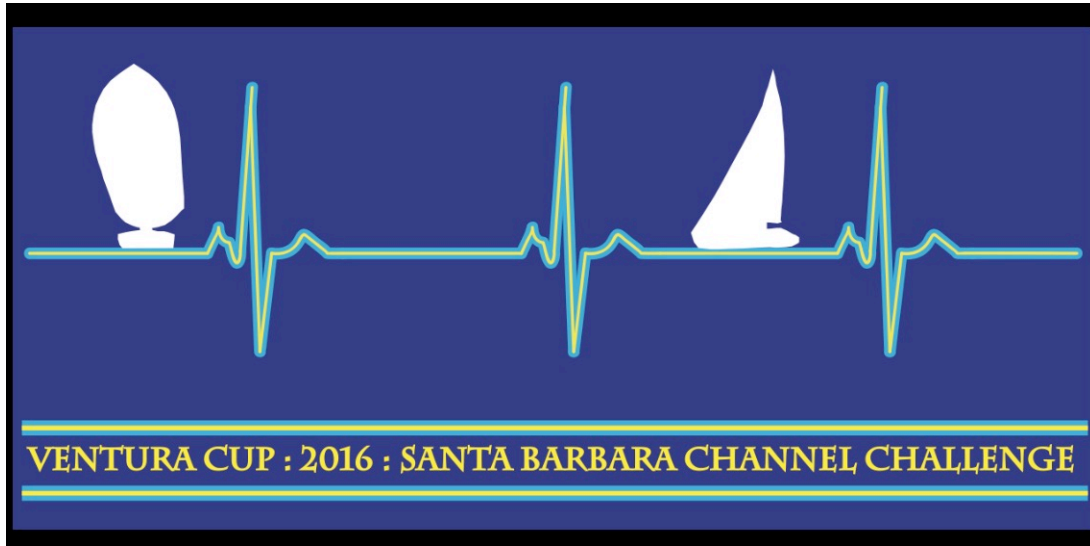


SAILING INSTRUCTIONS



Santa Barbara Channel Challenge *INDIVIDUAL YACHT COMPETITION*

AND

Ventura Cup *TEAM COMPETITION*

Sept. 17-18, 2016

VENTURA YACHT CLUB
1755 SPINNAKER DRIVE VENTURA, CALIFORNIA 93003
PHONE: (805) 642-0426
venturayachtclub.org

1 RULES:

- 1.1 The regatta will be governed by the rules as defined in *The Racing Rules of Sailing* (RRS), the 2016 Santa Barbara Channel Challenge/Ventura Cup Notice of Race and by these Sailing Instructions, which shall prevail in cases of conflict.
- 1.2 The Performance Handicap Racing Fleet of Southern California (PHRF) Marine Industry Racer (MIR) Rule 8 shall not apply.
- 1.3 Boats must carry the safety equipment required by the U.S. Safety Equipment Requirements (USSER) for U.S. Nearshore Races (Definition 1.0.3) as modified to add USSER 2.4.1 - 2.4.7 to require lifelines; except that coated lifelines are allowed (changes 2.4.4). A VHF Marine Radio with Channels 16 and 69 is required, but DSC/GPS capability, while recommended, is not required (changes 3.8.2). Refer to: <http://www.ussailing.org/safety/equipment-and-requirements/>. Minimum crew requirement is 2.
- 1.4 Area A and Area I PHRF Buoy ratings shall be used for races 1 & 2 and Random Leg (RLC) ratings for race 3. (Exception: The following one design boats, unless modified, shall rate as follows: J-22 buoy and RL 186; J-24 buoy and RL 168; Olson 30 buoy and RL 96; J-35 buoy 72, RL 75; Schock 35 buoy 72, RL 75; Melges 24 buoy 84, RL 60; J-105 buoy 90, RL 84; Moore 24 buoy 162, RL 156).
- 1.5 PHRF spinnaker and non-spinnaker classes are planned with class breaks as follows:

Spinnaker A: 84 and below
Spinnaker B: 85 to 144
Spinnaker C: 145 and above
Non-spinnaker D: 150 and above
- 1.6 Yacht club teams formed to compete for the Ventura Cup Team Trophy, will be composed of three mono-hull entrants. A yacht club may enter up to three, 3-boat teams. Each 3-boat team can be all spinnaker boats, or all non-spinnaker boats, or a combination of each. Boats competing for the Ventura Cup must be driven by members of the representative yacht clubs who have been fully paid members of that club for at least three months. All boats must have a valid PHRF rating certificate. However, current Class certificates may be substituted for PHRF certificates for boats in well established one-design classes (e.g. J/24, J/70) that don't normally sail in races requiring PHRF certificates. This changes Paragraph 6.4 of the PHRF class rules.

2 NOTICES TO COMPETITORS

Notices to competitors will be posted on the Regatta Notice Board located on the downstairs patio at VYC.

3 CHANGES TO THE SAILING INSTRUCTIONS

Any changes to the sailing instructions will be posted ashore before 0930 hours on the day it will take effect or afloat orally per RRS Rule 90.2 (c), except that any change to the schedule of races will be posted by 2000 hours on the day before it will take effect. Oral instructions from the Race Committee (R/C) on station on the water will be signaled over

radio Channel 69. Code flag “L” will be displayed until the start of the next sequence to signal an oral change has been made.

4 SIGNALS MADE ASHORE

- 4.1 Signals made ashore will be displayed at VYC from the flagstaff adjacent to the clubhouse.
- 4.2 When flag AP is displayed ashore, ‘1 minute’ is replaced with ‘not less than 1 hour’ in the race signal AP’.

5 SCHEDULE OF RACES

- 5.1 There will be a skippers’ briefing at 0900 hours Saturday, September 17, 2016, on the upper level of the Ventura Yacht Club clubhouse. A representative from each boat is highly recommended.
- 5.2 Races for all classes are scheduled as follows:

<u>Race</u>	<u>Day and Date</u>	<u>Time of First Warning Signal</u>
1	Saturday, September 17	1155 hours
2	Saturday, September 17	Following Race 1
3	Sunday, September 18	1155 hours

- 5.3 Two buoy races are planned for each class on Saturday and one random leg race is planned for each class on Sunday. In the event that fewer than two races are completed on Saturday for any reason, the Race Committee may issue an addendum to these Sailing Instructions by 2000 hours on Saturday notifying the racers of a change in the schedule of races for Sunday.

6 CLASS FLAGS

Class flags will be as follows:

<u>Class</u>	<u>Flag</u>
Spin A	Red
Spin B	White
Spin C	Green
Non-Spin	Purple

7 RACING AREA

- 7.1 The racing area for Buoy races #1 and #2 will be in the *vicinity* of the Mandalay race mark and approximately 2.5 miles south of the Ventura Harbor “R2” whistle buoy. Please note that the Mandalay mark itself will not be used for the Buoy races.
- 7.2 Mandalay race mark will be used for Random Leg race #3. The starting line for race #3 will be located between the course side of Mandalay race mark as the port-end mark and an orange flag or shape mounted on the R/C signal boat as the starboard-end mark.

SAFETY NOTE: When transiting to the race course, participants are cautioned to round the “R2” buoy as they exit Ventura harbor in a south-easterly direction, to avoid the shoaling that occurs at the mouth of the Santa Clara River estuary.

8 THE COURSES

- 8.1 The approximate course configuration for races #1 and #2 are illustrated in the 2016 Santa Barbara Channel Challenge Course Chart, which is hereby made part of these sailing instructions.
- 8.2 Courses for race 3 will be chosen from the 2016 Santa Barbara Channel Challenge *Coastal* Course Chart which is hereby made part of these instructions.
- 8.3 For races #1 and #2 the designation of the course to be sailed by each class and the approximate compass bearing of the first leg will be signaled from the R/C signal boat no later than the warning signal for that class.
- 8.4 For race #3 the designation of the course to be sailed by each class and the approximate compass bearing of the first leg for courses 10-17 will be signaled from the R/C signal boat no later than the warning signal for that class. The approximate compass bearing to the first mark for courses 18-30 is indicated on the 2016 Santa Barbara Channel Challenge *Coastal* Course Chart.

9 MARKS

- 9.1 For races #1 and #2, all marks are inflatable yellow tetrahedrons. New marks, when used in accordance with RRS Rule 33 will be inflatable yellow tetrahedrons with a black band.
- 9.2 When an oil platform is a mark of the course, its associated mooring buoy(s) will also be considered marks of the course. Such buoys are to be passed on the same side as the oil platform is to be passed (i.e., to port or starboard).

10 CHECK IN BEFORE THE START

After the R/C signal boat is securely anchored and before the warning signal for the first start of the day, each boat is requested to check in by radio on VHF 69 or hail her sail number while sailing astern of the Race Committee signal boat.

11 THE START

- 11.1 Races will be started in accordance with RRS Rule 26. There will be a multi-horn pre-warning attention signal one (1) minute before the warning signal for the first class to start.
- 11.2 The scheduled starting order for the first race each day will be Spin A, Spin B, Spin C, and Non-Spinnaker.
- 11.3 The starting line for race #1 and #2 will be between a staff displaying an orange flag on the R/C signal boat at the starboard end and the course side of an inflatable orange tetrahedron at the port end of the starting line. A float may be attached with a line to the transom of the R/C signal boat. No boat shall pass between this float and the R/C signal boat or touch the float at any time. For the purpose of RRS Rule 31, any such float is part of the R/C signal boat.
- 11.4 The starting line for race #3 will be located between the course side of the permanent Mandalay "M" race mark as the port-end mark and an orange flag or shape mounted on the R/C signal boat as the starboard-end mark. A float may be attached with a line to the transom of the R/C signal boat. No boat shall pass between this float and the R/C signal boat or touch the float at any time. For the purpose of RRS Rule 31, any such float is part of the R/C signal boat.

- 11.5 A boat shall not start later than 4 minutes after the starting signal for her class. A boat starting later than 4 minutes after her starting signal shall be scored DNS (Did Not Start) by the Race Committee. This changes RRS A5.
- 11.6 Boats whose warning signal has not been made shall avoid the starting area.

12 RECALLS

- 12.1 Recalls will be signaled in accordance with RRS Rule 29. As a courtesy, the Race Committee may attempt to hail the sail numbers of OCS boats on VHF channel 69.
- 12.2 The following shall not be grounds for granting redress [this changes RRS Rule 62.1(a)]:
 - (A) Failure of a boat to hear the recall hail or broadcast.
 - (B) A boat's position in the sequence of hailed numbers or broadcast numbers.
 - (C) Failure of the Race Committee to hail or broadcast numbers.

13 THE FINISH

- 13.1 The finish line for races #1 and #2 will be between a staff displaying an orange flag on the R/C signal boat at one end and the course side of an orange inflatable at the other end.
- 13.2 The finish line for race #3 shall be on a line between the VYC clubhouse balcony and the green light standard (#3) near the southern end of the detached breakwater.
- 13.3 As an aid to help the RC identify the boats that are finishing race #3, skippers are requested to call the RC on VHF 69 as they approach the finish line.

14 TIME LIMIT

- 14.1 For races #1 and #2, boats failing to finish within 1 hour after the first boat in their class sails the course (and finishes) will be scored points equal to the number of boats in that class. This modifies RRS Rule 35, A4 and A5.
- 14.2 For race #3 the time limit is 1700 hours. If the first boat in each class does not finish the prescribed course by 1700 hours, the race shall be abandoned for that class, and no make up race will be sailed. Also for race #3, boats failing to finish within 1 hour after the first boat in their class sails the course (and finishes) will be scored points equal to the number of boats in that class. This modifies RRS Rule 35, A4, and A5.

15 PROTESTS

Protests shall be written on forms available at the VYC office and shall be filed there within 1 hour after the protesting boat finishes or retires, or 1 hour after the R/C signal boat docks at VYC, whichever is later.

16 RETIREMENT

A boat that retires from a race after checking in shall notify the Race Committee before leaving the racing area. The Race Committee will monitor VHF Channel 69 throughout the race. If that is impossible, notify the Ventura Yacht Club Office at 805-642-0426.

17 SCORING

- 17.1 Scoring for individual competitors shall be in accordance with the RRS Appendix A Low Point System, except there will be no throw-outs; this changes Appendix A2. Three (3) races are planned. One race is required to be completed to constitute a regatta.

- 17.2 Scoring for yacht club teams competing for the Ventura Cup Team Trophy shall be low point scoring. All boats in a class, whether on a team or not, shall be scored for team scoring purposes.
- 17.3 In the event that a tie should occur among teams competing for the Ventura Cup Team Trophy, the following tie-breaking formula will be used to determine the team winner:
- (1) The first tie-breaker shall be the yacht club team scoring the fewest points in the final race.
 - (2) The second tie-breaker shall be the yacht club team with the highest combined PHRF handicap in race #3.

18 NON-SPINNAKER CLASS DEFINITIONS

- 18.1 No spinnakers or like sails such as flashers, cruising ‘chutes, MPSs, gennakers, etc., are allowed. All headsails must meet the requirements of RRS 50.4.
- 18.2 Only one spinnaker pole or whisker pole may be used at a time and, when in use, shall be attached to the foremost mast.
- 18.3 More than one headsail may be carried set, and the headsails need not be attached to the forestay.

19 INSPECTION

The Race Committee reserves the right to inspect any participating boats. Boats not in compliance with their PHRF Rating Certificate, or in violation of other PHRF rules, shall be subject to protest by the Race Committee or competitors, in accordance with the rules.

20 TROPHIES

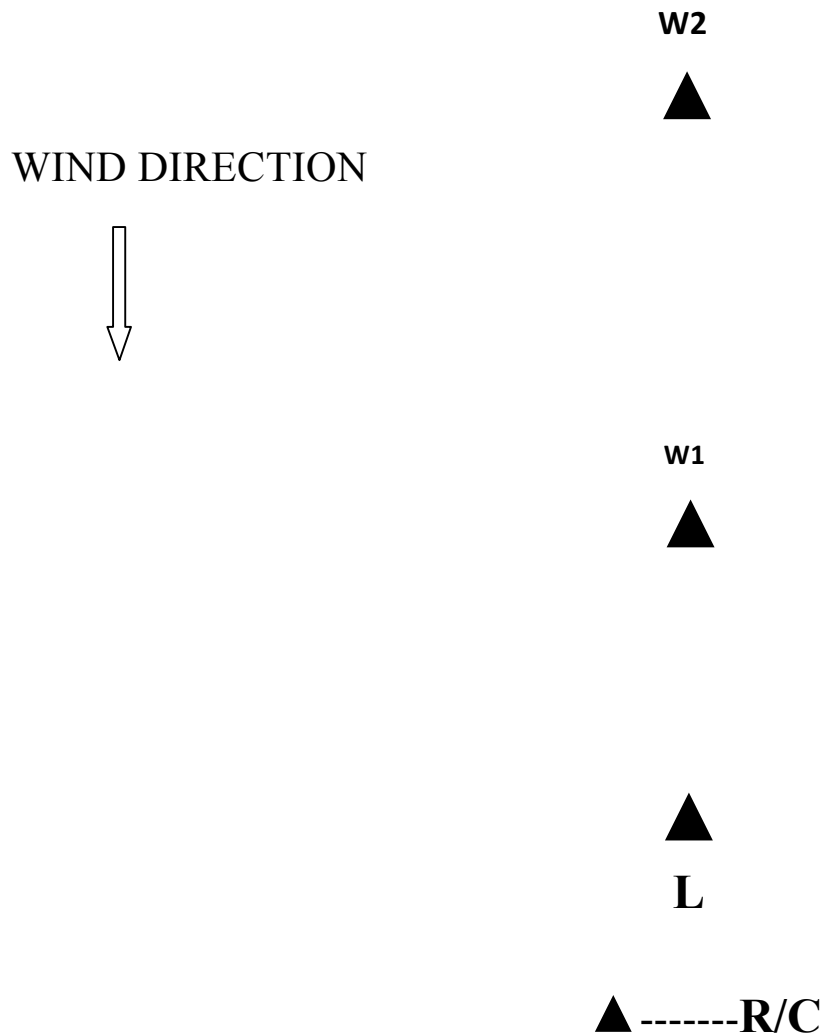
- 20.1 The winning team in the Ventura Cup Team Competition will have their sponsoring yacht club’s name inscribed on the Ventura Cup perpetual trophy. This trophy will then be entrusted to the care of the winning yacht club for display in their club’s trophy case until the next Ventura Cup Team Competition is held. Individual trophies for the three skippers of the first, second and third place teams will be awarded.
- 20.2 The winning boats for each class in the Santa Barbara Channel Challenge shall have their name inscribed on the Santa Barbara Channel Challenge perpetual trophy. This trophy shall remain on display at the Ventura Yacht Club. Individual trophies for first, second, and third place will be awarded to skippers in each spinnaker and non-spinnaker classes.

21 DISCLAIMER

Competitors in this event are participating entirely at their own risk; see RRS 4 Decision to Race. The race organizers (Organizing Authority, Race Committee, Protest Committee, host club, sponsors, or any other organization or official) will not be responsible for damage to any boat or other property, or the injury to any competitor, including death, sustained as a result of participation in this event. By participating in this event, each competitor agrees to release the race organizers from any and all liability associated with such competitors’ participation in this event to the fullest extent permitted by law.

**2016
SANTA BARBARA CHANNEL CHALLENGE**

**COURSE ILLUSTRATION FOR RACES #1 AND #2
(Not to Scale)**



2016
SANTA BARBARA CHANNEL CHALLENGE
COURSES and DISTANCE
For Races 1 and 2

#	<i>Course</i>	<i>Approximate Distance</i>
1	S-W1-F	2 NM
2.	S-W2-F	4 NM
3.	S-W1-L-W1-F	3.5 NM
4.	S-W2-L-W2-F	7.5 NM
5.	S-W2-L-W1-F	5.5 NM
6.	S-W1-L-W1-L-W1-F	5 NM
7.	S-W2-L-W2-L-W1-F	9 NM

NOTES:

Marks W1, W2 and L are left to port.

The approximate distance from S/F to W1 is 1 NM.

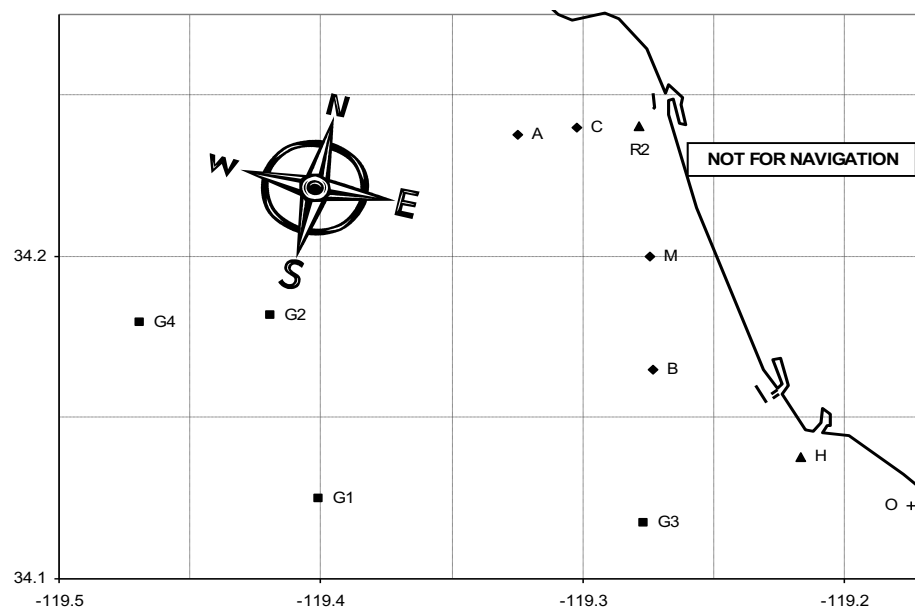
The approximate distance from S/F to W2 is 2 NM.

The approximate distance from Start/Finish to L is 0.25 NM.

2016 SANTA BARBARA CHANNEL CHALLENGE

COASTAL COURSE CHART FOR RACE 3

#	Course	Approx. Heading to 1st Mark	Length
10	S Wp Mp R2s F	To be posted on R/C signal boat	6.9
11	S Wp Mp Wp Mp R2s F		10.9
12	S Wp Mp As F		10.66
13	S Wp Mp Wp Mp As F		14.66
14	S Wp Mp R2p Cp F		9.24
15	S Wp Mp R2p As F		11.98
16	S Wp Mp Wp Mp R2p Cp F		13.24
17	S Wp Mp Wp Mp R2p As F	15.98	
18	S Bs R2s F	165	7.02
19	S Bs As F	165	10.31
20	S G3s R2s F	165	12.8
21	S G3s As F	165	15.76
22	S G1s R2s F	220	17.37
23	S G2s F	250	15.89
24	S G2s Mp R2s F	250	17.91
25	S As F	300	6.66
26	S As R2p Cp F	300	9.09
27	S As R2p As F	300	12.0
28	S As Mp R2s F	300	10.38
29	S As Bp R2s F	300	14.03
30	S As Mp R2p As F	300	15.46



MARKS		APPROX LOCATION	
A	Fish Sticks spar buoy	L: 34° 14.4'N	Lo: 119° 19.9'W
B	"Wes" spar buoy	L: 34° 09.9'N	Lo: 119° 16.5'W
C	Chips spar buoy	L: 34° 14.4'N	Lo: 119° 18.2'W
M	Mandalay spar buoy	L: 34° 12.0'N	Lo: 119° 16.5'W
R2	Whistle buoy R"2V"	L: 34° 14.4'N	Lo: 119° 16.7'W
G1	Platform Gail	L: 34° 07.5'N	Lo: 119° 24.0'W
G2	Platform Gilda	L: 34° 10.9'N	Lo: 119° 25.1'W
G3	Platform Gina	L: 34° 07.0'N	Lo: 119° 16.6'W
W	Inflatable buoy	2 miles from Mandalay spar buoy	