



STITT / CHAPPELL
MEMORIAL REGATTA
October 1, 2016
Pensacola Yacht Club



SAILING INSTRUCTIONS

September 26, 2016

1. RULES

- 1.1 The regatta will be governed by *rules* as defined by the *Racing Rules of Sailing* (RRS), the rules of the **Laser, 420, and Opti** classes, except as any that are changed by these sailing instructions. Each class must have at least 3 boats to constitute a class.

2 ENTRIES

Sailors may enter by completing registration on Regatta Network, event 13255:

https://www.regattanetwork.com/clubmgmt/applet_registration_form.php?regatta_id=13255

Registrations can be viewed at:

http://www.regattanetwork.com/clubmgmt/applet_registrant_list.php?regatta_id=13255&custom_report_id=101

- 2.1 Optimist class age rules apply.

3 SAFETY

- 3.1 A Coast Guard-approved PFD must be worn and fully secured at all times while afloat, except for brief periods while adding or removing clothing. Whistles permanently attached to the PFDs are recommended.
- 3.2 A boat retiring from a race shall notify a race committee boat before leaving the course or, when that is impossible, the PYC Race Committee immediately after arrival ashore.
- 3.3 In the event lightning is visible from the race course, all competitors must cease racing immediately and proceed to shore. All races started but not completed will be abandoned. Flags "N" over "H" (All races abandoned and further signals ashore) or "N" over "A" (All races abandoned and no more racing today) will be displayed from the signal boat with 3 sounds.

4 CHECK-IN

- 4.1 Prior to the warning signal of the first race, all competitors must check in with the race committee by crossing the stern of the signal boat, hail their sail number clearly, and be acknowledged by the RC Personnel.
- 4.2 A member of the crew of each boat must check in with a member of the safety committee on the Junior Sailing Center porch within 30 minutes upon returning to shore.

5 NOTICES TO COMPETITORS

Notices to competitors will be posted on the Official Notice Board located on the south wall of the Junior Sailing Center.

6 CHANGES IN SAILING INSTRUCTIONS

Any change to the sailing instructions will be posted before **0900** on the day it will take effect, except that any change to the schedule of races will be posted by **1800** on the day before it will take effect.

7 SIGNALS MADE ASHORE

7.1 Signals made ashore will be in accordance with RRS Race Signals and displayed on the flag pole located on the South lawn of PYC.

7.2 Flag AP with two **sound signals (one** when lowered) means, "The race is postponed. The first warning signal will not be less than **60** minutes after AP is lowered."

8 SPECIAL SIGNALS

8.1 The display of Flag "N" at the finish of any race means, "Racing has ended for the day." This changes the RRS 25.2 and Race Signals.

9 SCHEDULE OF RACES

9.1 The schedule time of warning signal for the first fleet race each day is:

Day & Date	Time of First Warning Signal
Saturday, October 1	10:55, additional races to follow

9.2 Team racing will be conducted if time permits following Fleet Racing

9.3 When there has been a long postponement and when more than one race (or sequence of races, for two or more classes) will be held on the same day, the warning signal for the first race and each succeeding race will be made as soon as practicable

9.4 No warning signal will be made after **16:00**.

10 CLASS FLAGS

Class flags will be:

Class Lasers Flag Pink

Class Opti R,W,B Flag Opti Class

Class Green Fleet Flag Green

11 RACING AREA

The racing areas will be as shown in Illustration A, attached. The Opti Green Fleet will be sailing in a separate race area and course as directed by the Green Fleet PRO.

12 THE COURSE

- 12.1 The diagram(s) in Illustration B show the course(s), the order of rounding, and the side on which each mark is to be rounded or passed. The PRO has the option to increase or decrease the number of legs of each course. *In regards to Illustration B (the Courses) the gates are open and boats may pass through or around the starting marks at their option.*
- 12.2 The identifying letter and number of legs of the course will be displayed on the race committee signal boat with or before the warning signal of the start.
- 12.3 The approximate compass bearing to the weather mark will be displayed on the race committee signal boat.

13 MARKS

Marks of the course will be **orange marks**. New marks, as provided in Instruction 16, Change of Course after the Start, will be **yellow marks**. The starting and finishing marks will be **round marks**.

14 THE START

- 14.1 Races will be started as follows. Times shall be taken from the visual signals; the failure of a sound signal shall be disregarded.

<u>MEANING</u>	<u>VISUAL SIGNAL</u>	<u>SOUND</u>	<u>TIME TO START</u>
Warning	Class Flag Up	One	4 minutes
Preparatory	P, I, Z, Z&I, or Black Flag	One	3 minutes
	Preparatory Flag down	One	1 minute
Start	Class Flag down	One	Zero

- 14.2 The warning signal for a succeeding class will be made with or at any time after the starting signal for the preceding class by displaying the class flag for the succeeding class.
- 14.3 The starting line will be between the staff from which an orange flag is displayed on the race committee signal boat at the starboard end and the course side of the port-end starting mark.
- 14.4 Boats whose warning signal has not been made shall keep clear of the starting area and of all boats whose warning signal has been made.
- 14.5 A boat shall not start later than **4** minutes after her starting signal.

15 RECALLS

The Race Committee intends to hail the recall or sail numbers of OCS boats after the starting signal. The failure of any boat to hear the hail, an untimely hail of OCS boats, failure to hail any boats, and the order of the boats in the hail shall not be grounds for filing for redress.

16 CHANGE OF COURSE AFTER THE START

A change of course after the start will be signaled before the leading boat has begun the leg, although the new mark may not then be in position. The signal to change of course will be by flying a red or green flag to indicate the general direction of the new mark heading (left or right) accompanied by code flag "C" (Charlie) at or near the mark that begins the changed leg. This modifies Rule 33. Any mark to be rounded after rounding the new mark may be relocated to maintain the original course configuration. When in a subsequent change of course a new mark is replaced, it will be replaced with an original mark.

17 THE FINISH

The finish line will be between the staff from which an orange flag is displayed on the race committee signal boat at the starboard end of the line and the course side of the port-end mark.

18 TIME LIMIT

The time limit will be **90 minutes** for all classes. Boats failing to finish within **30 minutes** after the first boat finishes or within the time limit, whichever is later, will be scored Did Not Finish. This changes rule 35.

19 PROTESTS

- 19.1 Protests shall be in writing using forms available on the Official Notice Board, and delivered to Bert Rice at the Junior Yacht Club within **60** minutes after the time of the docking of the race committee.
- 19.2 Protests will be heard in approximately the order of receipt as soon as possible. The representative of the protestor or protestee is limited to the skipper and/or crew member. This changes RRS 63.3.
- 19.3 Protest notices will be posted within **30** minutes of the protest time limit to inform competitors where and when there is a hearing in which they are parties to a hearing or named as witnesses. This posting shall constitute the notification required by RRS 63.2 and RRS 61.1(b).
- 19.4 Rule 66 is changed by adding this sentence: "On the last day of racing, a party to the hearing may ask for a reopening no later than one hour after being informed of the decision."
- 19.5 A boat is not permitted to protest another boat for breaking sailing instructions 3, 4, 23 & 24. This changes Rule 60.1 (a). The penalty for breaking these instructions may be less than disqualification at the discretion of the protest committee.

20. PROTEST ARBITRATION

- 20.1 All competitors shall comply with penalties imposed by on the water judges or be subject to disqualification from that race. On the water judges have the authority to protest and assign a penalty (360 turn) on the race course. This applies to Fleet racing and Team racing.
- 20.2 Rule 44 is modified to allow a boat either to take the penalty described in RRS 44.1 and 44.2 while on the water or to take a 40% Scoring Penalty for a breach of a rule of Part 2 after the incident but prior to the protest hearing by acknowledging the infringement before arbitration or by accepting the opinion of the arbitrator.

After a protest has been lodged, one designated representative from each boat, who shall have been on the boat when the incident occurred, may appear together before an arbitrator appointed by the protest committee. No witnesses will be allowed.

The arbitrator will have each party describe the incident, limiting each party to approximately three minutes. After hearing the testimony, the arbitrator will express one of the following conclusions:

1. No rule was broken. The protester has the option of withdrawing the protest. If he decides to do so, he signs to this effect on the protest form. The protest is then withdrawn and shall not be reopened or appealed. If the protester does not withdraw the protest, it will be submitted to the protest committee in the normal manner.
 2. A rule was broken by one of the boats involved. The representative of the offending boat has the option of either accepting a 40% penalty or submitting the matter to the protest committee for a protest hearing. If the penalty is accepted, the matter is closed and cannot be submitted to a hearing, be reopened, appealed, or submitted for redress.
 3. The protest should be submitted to the protest committee in the normal way. When protests are submitted to the protest committee, the arbitrator shall not be a member of the protest committee hearing the protest, or be called as a witness or be present in the protest committee room. The arbitrator shall not discuss the matter with protest committee members until after the protest committee's decision has been posted.
- 20.2 Application of the 40% penalty shall be calculated in accordance with rule 44.3, except that the penalty is modified to read 40%.

21 SCORING

The Low-Point Scoring System, Appendix A of the racing rules, will apply for all classes. A maximum of **8** races are scheduled, of which **1** shall be completed to constitute a series. If **6** or more races are sailed, a boat's worst score will be discarded. If 5 or fewer races are sailed, no scores will be discarded.

22 DISPOSAL OF TRASH

Boats observed purposefully discharging trash into the water may be disqualified from all races the day the infraction or be subject to other disciplinary action, as appropriate per the PRO.

23 SUPPORT BOATS

- 23.1 Except as noted in 23.2, team leaders, coaches and other support personnel shall not be in the racing area from the time of the preparatory signal for the first class to start until all boats have finished or the race committee signals a postponement, general recall or abandonment. The penalty for failing to comply with this requirement may result in **disqualification of** all boats associated with the support personnel who do so.
- 23.2 Optimist Green Fleet: Coaching is encouraged during the starting sequence, around marks, and for staying generally "on course." Green Fleet support boats must identify themselves to the Race Committee and be careful not to interfere with any racing boats. Safety is paramount.

- 23.3 Coaches must wear fully secured PFDs while on the water. Other support people – race committee, mark and safety boat operators, parents, etc. – are strongly encouraged to wear fully secured PFDs while on the water.
- 23.4 All coach boats and other support boats/support personnel must agree to aid any competitor in distress or requesting assistance of any sort.

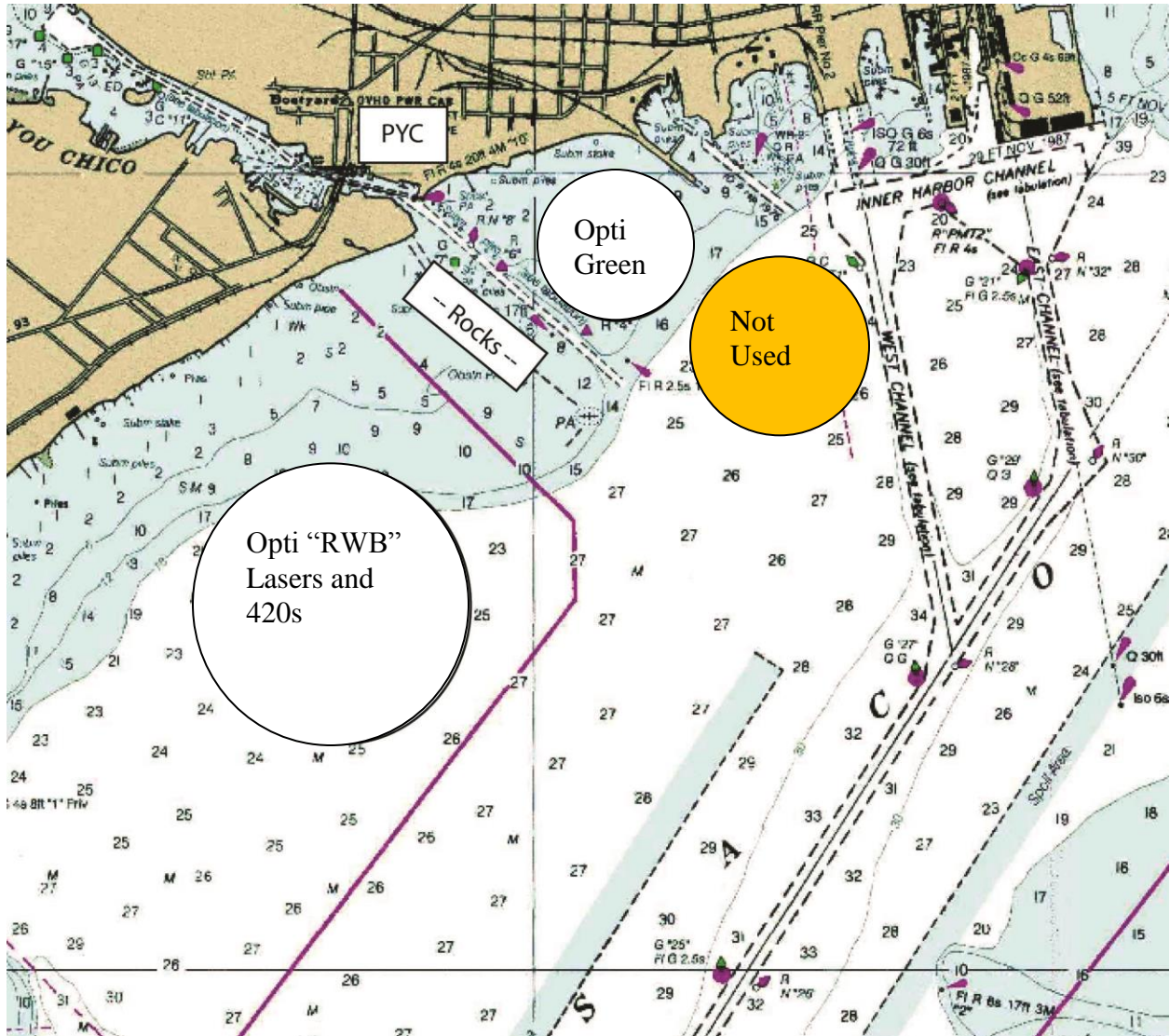
24 PRIZES

- 24.1 Trophies will be awarded First through Third for each class in fleet racing.

Attachments: Illustration A - The Racing Area

Illustration B - Course Diagrams (see RRS Appendix K, Addendum A)

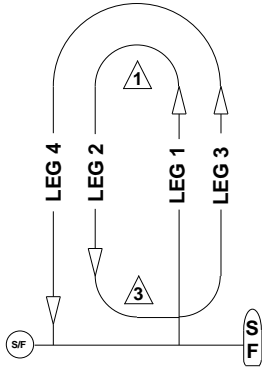
Illustration A: The Racing Areas



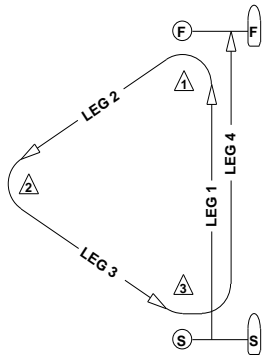
Refer to NOAA Chart #11383, *West Florida – Pensacola Bay*, for more details.

Illustration B – Course Diagrams

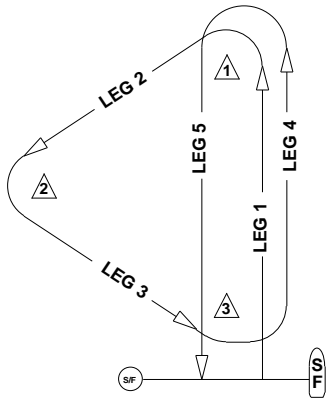
W 2



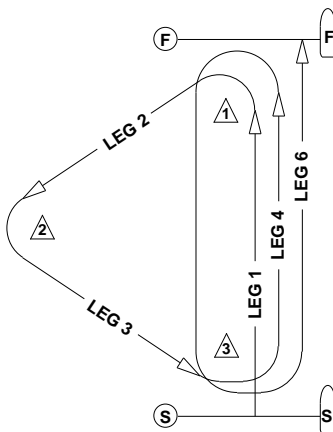
T 1/2



G



O



T W 2

