



4800 Riverside Drive
P.O. Box
268 Galesville, MD
20765
410.867.WRSC
(9772)

www.westriversc.org

2015 Billy Heintz 87th Annual Memorial Regatta

Hosted by West River Sailing Club: Sept 3-4

SAILING INSTRUCTIONS

1 RULES

The regatta will be governed by the current Racing Rules of Sailing, together with the rules of the participating classes and any additional sailing instructions to be issued at the competitors' meeting.

2 ELIGIBILITY AND ENTRY

See Notice of Race.

3 FEES

See Notice of Race.

4. NOTICES TO COMPETITORS

Notices to competitors will be posted on the official notice board located on the East window of the WRSC clubhouse.

5. SIGNALS MADE ASHORE

Signals made ashore will be displayed from the flagpole located at WRSC.

If a postponement is signaled ashore, the warning signal will be made not less than 30 minutes after flag AP is lowered.

Signals such as designating a racing area, choice of sound-signal starting system, or number of races may be given on the water.

6. SCHEDULE

Saturday

- 0830 Late registration (on-site) open
- 0915 Late registration (on-site) closed
- 0930 Competitors' meeting (flagpole or inside if rain)
- 1100 First warning signal

Sunday

- 1030 First warning signal
- 1430 No warning signal will be made after this time
 Awards to follow racing

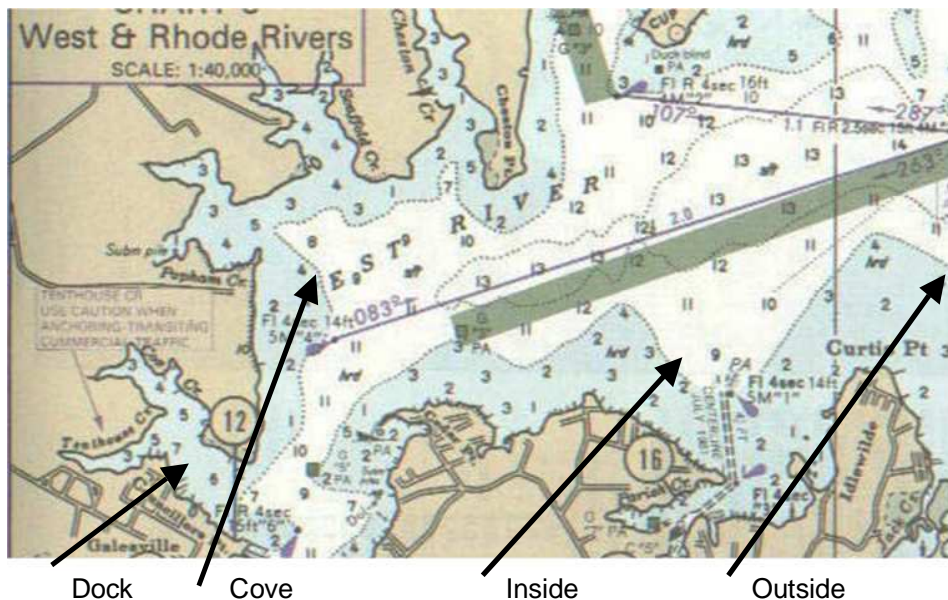
7. CLASS FLAG

Class flags will be the respective insignia or as described at the competitor's meeting.

8. RACING AREA

The venue shall be finalized by the RC on race day. WRSC typically races on the West River or on the west side of the bay just outside of the river entrance.

Typical Race Venue Locations



Race Course by Fleet

- Course 1 – Flying Scot, Chesapeake 20, Albacore
- Course 2 – A-Cat, F-16

9. COURSE AND MARKS

Courses will be Modified Windward-Leeward (designated by "W") with optional windward offset mark. The length of the course will be posted to starboard of the signal boat and will be indicated by a number corresponding to the number of legs to be sailed. The start / finish area is closed.

10. STARTING AND FINISHING LINES

10.1. The starting line will be between the spar flying the on-station flag of the Race Committee boat and a ball to be port, per diagram. The finish line will be between the on-station flag of the RC boat and a ball to be starboard, per diagram.

The start / finish area is closed.

If the course is shortened per the RRS, the finish line will be between a RC boat flying the blue finish flag and an adjacent mark, to be left to port.

10.2. Starting system will be that of RRS 26.

10.3. Boats not racing must keep clear of starting & finishing boats.

11. TIME LIMITS

The time limit will be 60 minutes for the first boat to finish for its respective fleet. Any boat not finishing within 20 minutes of the first boat in its respective fleet to finish will be scored DNF.

12. PENALTY SYSTEM AND PROTESTS

12.1 The penalties are as follows: Rule 44 of RRS.

12.2 Rules 44.1 and 44.2 are changed so that only one turn, including one tack and one gybe, is required.

12.3 Decisions of the protest committee will be final as provided in rule 70.5.

13. SCORING

13.1 The scoring system is as follows Low Point Scoring System found in Appendix A.

13.2 One race is required to be completed to constitute a series.

13.3 (a) When fewer than 5 races have been completed, a boat's series score will be the total of her race scores.

(b) When 5 or more races have been completed, a boat's series score will be the total of her race scores excluding her worst score.

14 SUPPORT BOATS

Support boats shall be marked with the letters WRSC or as designated at Competitor Meeting.

15 CHECK-IN

Before starting their first race of the day, all competitors shall sail astern the starting boat, give their sail number and be acknowledged by the RC. Any competitor who leaves the race area before the completion of racing shall attempt to notify the RC before leaving the race area.

16 RADIO COMMUNICATION

A boat shall neither make radio transmissions while racing nor receive radio communications not available to all boats. This restriction also applies to mobile telephones, but does not apply to communication received or transmitted to request or render assistance to a vessel in distress or to notify RC that a competitor is leaving the race area.

17 PRIZES

For each class, prizes will be given to the first place finisher in classes with 3 or fewer entries, the first two finishers in classes with 6 or fewer entries and the first three finishers in classes with 7 or more entries.

The Billy Heintz memorial Trophy will be awarded to the first place competitor of the WRSC class with the largest number of entries in the Regatta.

18 DISCLAIMER OF LIABILITY

Competitors participate in the regatta entirely at their own risk. See rule 4, Decision to Race. The organizing authority will not accept any liability for material damage or personal injury or death sustained in conjunction with or prior to, during, or after the regatta.

Appendix A: Course Diagram

- o Windward mark shall be left to port;
- o Windward mark may have an offset mark;
- o Leeward mark will be to leeward of start/finish area;
- o Leeward mark shall be left to port;
- o Start line is between on-station flag of the Race Committee boat and a ball to be port. The finish line will be between the on-station flag of the RC boat and a ball to be starboard.
- Closed Start / Finish line;
- o Start / Finish and offset marks will be balls;
- o Windward mark and leeward marks are cylinders.

Modified Windward/Leeward Diagram with Option

Course Options



Windward Offset

