



PORSCHE®



Mercedes-Benz



Audi

---

# MELBOURNE

**2017 J/24 Midwinter Championship**

**February 9 -12, 2017**

***Eau Gallie Yacht Club and Melbourne Yacht Club***

***Indian Harbor Beach, Florida***

***[www.J24midwinters2017.com](http://www.J24midwinters2017.com)***

## **Sailing Instructions**

### **1 RULES**

1.1 The regatta will be governed by the *rules* as defined in *The Racing Rules of Sailing* (RRS).

1.2 No member of the crew shall station any part of his/her torso outside the upper lifeline other than temporarily. This modifies RRS 49.

1.3 With permission of the IJCA, the following IJCA class rule is modified: IJCA rule **C 2.1 (b)** is changed to permit a boat to sail with different crew on different days provided the crew changes are declared at registration. Crew changes not declared at registration require advance written approval of the race committee and will only be approved in exceptional circumstances.

1.4 RRS 41 will be changed as follows: A boat shall receive no outside assistance, except as provided for in RRS 41, after leaving her mooring for the first race of each day until she returns to her mooring. This changes the preamble to Part 4 of the RRS

1.5 RRS 42.3 (b) and (c) will be replaced by IJCA Rule C 1.1.

1.6 US Sailing prescriptions to RRS 60, 63.2 and 63.4 will not apply.

**2. Notices to Competitors:**

2.1 Notices to competitors will be posted on the regatta notice board located on the near the flagpole and outdoor dining area of EGYC

2.2 The race committee will use VHF channel 72 to communicate with competitors on the water.

**3. Changes to Sailing Instructions:**

Any change to the Sailing Instructions will be posted before 0800on the day it will take effect, except that any change to the schedule of races will be posted by the end of protest time on the day before it will take effect.

**4. Signals Made Ashore:**

4.1 Signals made ashore will be made at the flag pole adjacent to the outdoor dining area and pool at EGYC.

4.2 When flag AP is displayed ashore, '1 minute' is replaced with 'not less than 40 minutes' in the race signal AP.

**5. Schedule of Races:**

**5.1**

Day	Date	Time	Event/Activity
Thursday	9 February	0900 – 1700 1400	Registration/ Launch and Crew Weigh-in Practice Race
Friday	10 February	0800 – 0930  0930 1000 1145	Registration/Crew Weigh-in, Late arrival launching All boats afloat Competitor's Meeting Warning for First Race of the Day
Saturday	11 February	0800 – 0830 1100	Crew Weigh-in* Warning for First Race of the Day
Sunday	12 February	0800 – 0830 1100 1400	Crew Weigh-in* Warning for First Race of the Day No races to start later than; Awards after Racing

5.2 Ten Races are scheduled over three consecutive days.

5.3 Four races are scheduled for Friday and Saturday and two on Sunday. One extra race per day may be sailed provided that the regatta does not become more than one race ahead of schedule and the change is made according to the provisions of the Sailing Instructions. If the regatta is behind schedule, extra races to a maximum of four races may be sailed in a single day.

**6. Class Flag:**

The J/24 Class Flag (Blue insignia on a white background) shall be used

**7. Racing Areas:**

The racing area is the waters of the Indian River north of the Eau Galle Causeway.

**8. Courses:**

8.1 The diagrams in Attachment B show the courses.

8.2 No later than the warning signal, the race committee signal boat will display the course designator, the approximate compass bearing and the distance of the first leg. The RC will also broadcast this information. Failure to broadcast or to receive this information shall not be considered an improper action or omission of the race committee under RRS 62.1 (a).

8.3 If only one mark of a gate is in place, the remaining mark shall be rounded to port.

8.4 The gate may be adjusted at any time without signaling a course change, provided that one mark remains in place.

**9. Marks:**

9.1 Mark 1 will be an orange tetrahedron, mark 1a will be a white sphere marks 2P and 2S will be orange tetrahedrons.

9.2 New marks, when used in accordance with SI 12 will be an orange tetrahedron with a dark colored band circling the mark through the handles.

9.3 The starting marks will be a race committee boat on one end of the line and an inflatable yellow cylinder at the other. A small buoy may be attached to the committee boat and is to be considered part of the mark.

9.4 The finishing marks will be a race committee boat on one end of the line and an inflatable yellow cylinder at the other.

**10. Start:**

10.1 The starting line will be between the staff displaying an orange flag on the RC signal boat and the course side of an inflatable mark.

10.2 A boat starting later than 5 minutes after her starting signal will be scored Did Not Start without a hearing. This changes RRS 63.1, A4 and A5.

**11. Recalls**

11.1 After an individual recall, the Race Committee may broadcast the bow of any boats on the course side of the starting line on the VHF channel 72.

11.2 Failure to make or receive such broadcasts or the order of transmission shall not be considered an improper action or omission of the race committee under RRS 62.1 (a).

**12. Change of the Next Leg of the Course:**

12.1 To change the next leg of the course, the race committee will lay a new mark (or move the finishing line) and remove the original mark as soon as practicable. When in a subsequent change a new mark is replaced, it will be replaced by an original mark.

12.2 When the windward mark is replaced, the offset mark will not be set.

**13. The Finish:**

13.1 The finishing line will be between a staff displaying an orange flag on the finishing boat and the course side of an inflatable mark.

13.2 If code flag A is displayed, without sound signal on the finish boat, it indicates that racing is concluded for the day.

**14. Time Limits and Target Times:**

14.1 The target time for races is 50 to 75 minutes. Failure to meet the target time shall not be considered an improper action or omission of the race committee under RRS 62.1 (a).

14.2 The time limit for the first boat to sail the course and finish is 75 minutes.

15.2 Boats that are still racing, but fail to finish within 20 minutes after the first boat sails the course and finishes will be scored TLE (Time Limit Expired) without a hearing. This changes RRS 35, 63.1, A4, A5 and A11.

**15. Penalty System:**

15.1 RRS 44.1 (main body) and 44.2 (turns penalties) are not in use for this regatta. RRS 44.1(a) and 44.1(b) continue to apply. The Scoring Penalty, RRS 44.3, will apply, with penalties as modified by the IJCA (table in Attachment D). The infringing yacht shall file a written declaration of the infringement on a "Scoring Penalty Acceptance Form", which shall be available at a table near the notice board in the outdoor dining area and submitted to a Protest Committee representative, at the same location, within one hour of the docking time of the Race Committee finish boat.

15.2 The red flag displayed by a protesting boat shall have a hoist of not less than 150 mm and a fly of not less than 200 mm. This changes RRS 61.1 (a).

15.3 Flag I may replace the yellow flag required by RRS 44.3 (a).

15.4 Alternative scoring penalties shall apply for breaking certain class rules. See Attachment C. This changes RRS 63.1 and A5.

**16. Protests and Requests for Redress:**

16.1 Protest forms are available at a table near the notice board in the outdoor dining area. Protests and requests for redress or reopening shall be delivered there within the appropriate time limit.

16.2 The protest time limit will be posted on the notice board by the protest committee.

- 16.3 The race committee will post a list of penalties being assigned by the race committee prior to the end of the protest time limit. The deadline for requests for redress based on these assigned penalties will be either 30 minutes after posting or the protest time limit, whichever is later.
- 16.4 Notices will be posted promptly after the receipt of a protest to inform competitors of hearing in which they are parties or named as witnesses. Hearings will be held in the "Board Room" located near the front entrance to EGYC beginning at the time posted).
- 16.5 On the last scheduled day of racing, a request for reopening a hearing shall be delivered (a) within the protest time limit if the requesting party was informed of the decision on the previous day or before; (b) no later than 30 minutes after the requesting party was informed of the decision on that day. This changes RRS 66
- 16.6 On the last scheduled day of racing, a request for redress based on a protest committee decision shall be delivered no later than 30 minutes after the decision was posted. This changes RRS 62.2.

**17. Scoring:**

- 17.1 Three races are required to be completed to constitute a series.
- 17.2 When fewer than five races have been completed, a boat's series score will be the total of her race scores. When five or more races have been completed, a boat's series score will be the total of her race scores, excluding her worst non-excludable score.
- 17.3 A TLE score shall be two more points than the number of boats that have finished within the time limit.

**18. Safety Regulations:**

- 18.1 Before the warning signal of the first race each day, each boat shall sail on starboard tack past the stern of a designated race committee boat displaying flag L and hail her bow number until acknowledged by the race committee repeating her number.
- 18.2 A boat that retires from a race or does not intend to compete in a race or returns to the racing area shall notify the race committee as soon as possible by hail or VHF transmission.
- 18.3 Boats shall not interfere with commercial vessels navigating in the ICW. Any boat which does so will be subject to protest and possible disqualification.

**19. Replacement of Crew or Equipment:**

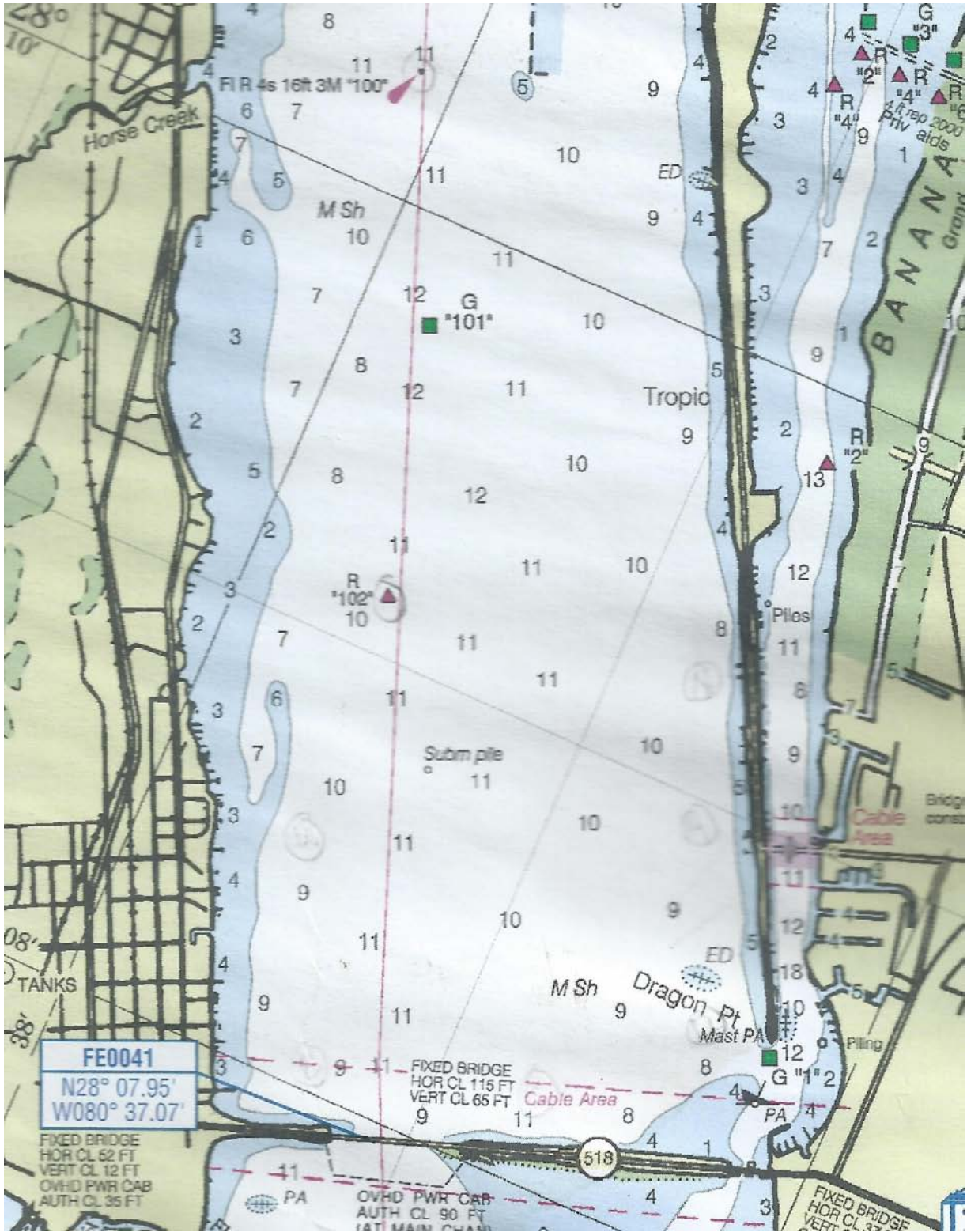
- 19.1 With permission, IJCA rule C 2.1(b) is changed to permit a boat to sail with different crew on different days provided the crew changes are declared at registration.
- 19.2 Crew changes not declared at registration will be allowed only with prior written approval of the race committee. a. Unless the race committee specifies otherwise, any substitution permitted will be for 24 hours only. b. The number of crew shall not change during the regatta.
- 19.3 Substitution of damaged or lost equipment will not be allowed unless authorized by the race committee. Requests for substitution shall be made to the race committee at the first reasonable opportunity.

Substitution of spinnaker poles or rudders with spares that have been measured and are carried aboard may be done without notification.

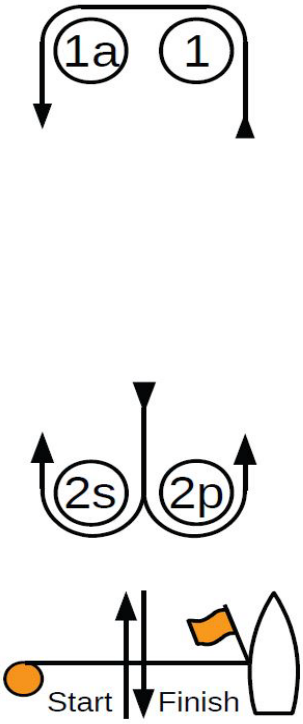
**20. Radio Communications:**

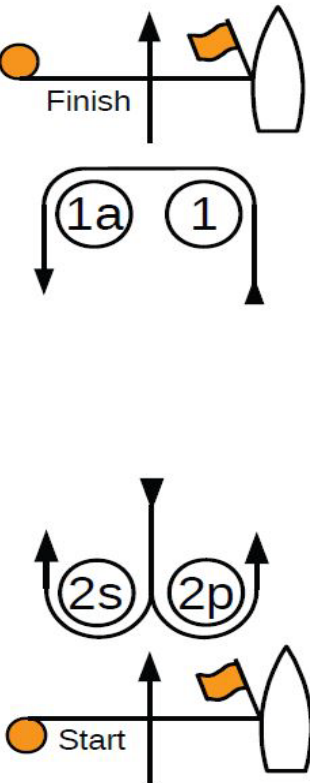
20.1 Except in an emergency or as permitted by SI 2.2 , a boat shall neither make or receive radio or other electronic transmissions while racing. This changes RRS 41 (c).

ATTACHMENT A - RACING AREA LOCATION



ATTACHMENT B – COURSE DIAGRAMS

<p>Course 4 &amp; 6</p>  <p>The diagram for Course 4 &amp; 6 consists of three parts. The top part shows a loop with two marks: '1a' on the left and '1' on the right. Arrows indicate a counter-clockwise direction. The middle part shows a loop with two marks: '2s' on the left and '2p' on the right. Arrows indicate a counter-clockwise direction. The bottom part shows a horizontal line starting with an orange circle labeled 'Start' and ending with a flag on a post labeled 'Finish'. A vertical line with arrows pointing up and down is positioned between the 'Start' and 'Finish' points.</p>	<p>Course 4 Start, 1, 1a, 2s or 2p, 1, 1a, Finish.</p> <p>Course 6 Start, 1, 1a, 2s or 2p, 1, 1a, 2s or 2p, 1, 1a, Finish.</p>
------------------------------------------------------------------------------------------------------------------------------------------------------------------------------------------------------------------------------------------------------------------------------------------------------------------------------------------------------------------------------------------------------------------------------------------------------------------------------------------------------------------------------------------------------------------------------------------------------------------------------------------------------------------------------------------------------	------------------------------------------------------------------------------------------------------------------------------------------------------------

<p>Course 5 &amp; 7</p>  <p>The diagram for Course 5 &amp; 7 consists of three parts. The top part shows a horizontal line starting with an orange circle labeled 'Finish' and ending with a flag on a post. A vertical line with an arrow pointing up is positioned between the 'Finish' and the flag. The middle part shows a loop with two marks: '1a' on the left and '1' on the right. Arrows indicate a counter-clockwise direction. The bottom part shows a loop with two marks: '2s' on the left and '2p' on the right. Arrows indicate a counter-clockwise direction. Below this loop is a horizontal line starting with an orange circle labeled 'Start' and ending with a flag on a post. A vertical line with an arrow pointing up is positioned between the 'Start' and the flag.</p>	<p>Course 5 Start, 1, 1a, 2s or 2p, 1, 1a, 2s or 2p Finish.</p> <p>Course 7 Start, 1, 1a, 2s or 2p, 1, 1a, 2s or 2p, 1, 1a, 2s or 2p, Finish.</p>
-------------------------------------------------------------------------------------------------------------------------------------------------------------------------------------------------------------------------------------------------------------------------------------------------------------------------------------------------------------------------------------------------------------------------------------------------------------------------------------------------------------------------------------------------------------------------------------------------------------------------------------------------------------------------------------------------------------------------------------------------------------------------------------------------------------------------------------------------------------------------------------------	---------------------------------------------------------------------------------------------------------------------------------------------------------------------------------------

Note: If either mark 2S or 2P is missing, round the remaining mark to port.



## ATTACHMENT C

# Alternative Penalties for Breaking Some Class Rules

Alternative scoring penalties shall apply for breaking certain class rules. If a boat receives one of the above penalties, the protest decision shall include whether the same penalty can or will be applied to subsequent infringements. The protest decision may also specify that the boat cannot be protested again under the same class rule for a time period specified by the jury. The jury will decide to which race(s) the penalty shall apply.

<b>Class Rule</b>	<b>Infringement</b>	<b>Scoring Penalty</b>	
B.3	Complete Measurement Certificate, including the Inventory of Required and Optional Equipment is not on board	20%	
C.4	Advertising does not conform to World Sailing (Reg 20) standards	20%	
C.9.4 & C.9.5	Mainsail is set outside of the limit marks	20%	
C.5.1(a)(1)	Bailing bucket (9 liter min. with lanyard) is not on board	20%	
C.7.2(a)(9)	Approved compass device is not present or not functional	20%	
C.5.1(a)(4)	Throwable lifesaving device with attached sea anchor is not on deck, ready for use	20%	
C.5.1(a)(5)	First aid kit is not on board	20%	
C.5.1(b)(1) C.5.1(a)(2) C.5.2(a)(10)	Any of anchors(s), outboard motor/engine, battery or engine fuel container(s) are not in their proper location and secured against movement	20%	
C.7.3(a)(11)	Elastic (shock) cord is used in the standing or running rigging where it is not specifically allowed	20%	
C.5.3	Stowage of equipment other than unbagged sails on the cabin sole	20%	
	Removal of the rudder from the water when the Sailing Instructions stipulate that the boat shall remain afloat for the duration of the regatta	20%	

ATTACHMENT D

# Scoring Penalties

Action\Penalty	10%	20%	25%	30%
Touching a mark	X			
Breach of a part 2 rule ("right of way, room")	X			
Breach of a part 2 rule ("right of way, room") <b>within the zone</b>		X		
After Race Scoring Penalty for touching a mark		X		
After Race Scoring Penalty for a breach of a part 2 rule ("right of way, room")		X		
After Race Scoring Penalty for a breach of a part 2 rule ("right of way, room") <b>within the zone</b>			X	
If one of the above After Race Scoring penalties is taken after the protest time limit				X
If taken as the result of an arbitration				X
<b>Penalties imposed by the Race Committee or Int. Jury without a hearing: These modify RRS 63.1</b>				
If a boat fails to check in before racing (SI 18.1) <b>(RC)</b>	X			
If some, but not all requirements of a properly taken Scoring Penalty are met <b>(Jury)</b>				X