



CAROLINA YACHT CLUB
Wild Oyster Regatta
October 22-23, 2016
SAILING INSTRUCTIONS



1. Rules:

- 1.1 The regatta will be governed by *The Racing Rules of Sailing* (RRS).
- 1.2 Article VIII, 4 of the ILCA Rules will be in effect. Sail numbers on main sails and spinnakers must be the same.
- 1.3 US Sailing Appendix T1, T2, T3, T4.2 and T4.4 are in effect.
- 1.4 Each boat will be assigned a bow number which shall be displayed on both sides of the bow. Boats failing to display bow numbers will be subject to protest by the race committee only. This changes RRS 60.1(a).
- 1.5 Competitors are reminded they shall comply with the International Regulations for Preventing Collisions at Sea (IRPCAS) when meeting vessels that are not racing.

2. NOTICES TO COMPETITORS - Notices to competitors will be posted on the Official Notice Board located downstairs at the Boathouse.

3. CHANGES TO SAILING INSTRUCTIONS

- 3.1** Any Changes to the sailing instructions will be posted not less than one hour prior to the warning signal of the first race in which the change will take place.
- 3.2** Any changes to the schedule of races will be posted no later than 2000 hours on the day before the change takes place.
- 3.3** Oral changes to the Sailing Instructions may be given on the water by hail from the Signal Boat under code flag "L" in accordance with RRS 90.2 (c). Changes must be made before the warning signal.

4. SIGNALS MADE ASHORE

- 4.1** Signals made ashore will be displayed from the flagpole at the Carolina Yacht Club.
- 4.2** When code flag "AP" is displayed ashore, "1 minute" is replaced with "not less than 45 minutes" in the RRS Race Signal "AP."

5. SCHEDULE - Races are scheduled as follows:

Friday, Oct 21	5:00-7:00pm	Welcome Social & Registration at CYC Boathouse
Saturday, Oct 22	8:30am – 10:00am	Registration at CYC Boathouse & Continental Breakfast
	10:00am	Competitors Meeting CYC Boathouse
	11:00am	First Warning Other races to follow
	6:30pm	Oyster Roast party at CYC
Sunday, Oct 23	10:30am	First Warning Other races to follow

Awards to follow conclusion of racing

No Warning Signal will be made after 2:30pm on Sunday, October 23.

6. **CLASS FLAGS** – Class flag will be Yellow or Lightning Insignia Flag.

7. **RACING AREA** – Ashley River in the Charleston Harbor. (See Chart)

8. **COURSES**

8.1 The diagrams show the courses and the approximate angle between legs and the order in which the marks are rounded and the side on which each mark is to be passed.

8.2 No later than the Warning signal, the RC signal boat will display the course to be sailed, which will be designated by international code numeral flags or posted on a dry erase board hanging from the signal boat.

8.3 If the offset mark (0) is missing, boats should sail to the leeward mark (2 or 2A) after rounding mark 1. This changes Rule 34. In the event a change mark is used, offset mark “0” will not be used.

8.4 The course diagram shows a gate which will be used when conditions permit. If conditions are such that a gate is impractical, only one leeward mark will be used and it shall be rounded to port.

9. **MARKS**

Marks 1, 2a & 2b	Yellow Tetrahedron
Offset Mark “0”	Orange Ball
Starting Mark	Orange Flag
Finish Mark	Orange Flag
Change Mark	Lime Green Inflatable (note: offset mark “0” will not be used with change mark)

10. **THE START**

10.1 Races will be started using RRS 26. The starting line will be between the staff displaying an orange flag on the RC signal boat on the starboard end of the starting line and the port end starting boat with orange flag.

10.2 A boat starting later than 4 minutes after her starting signal will be scored Did Not Start (DNS) for that race. This changes A3.

11. **THE FINISH** - The finishing line will be between a staff displaying a orange flag on the finish boat and an orange flag on the finishing pin boat on the port end of the line.

12. **PENALTY SYSTEM:**

12.1 Appendix T1, T2, T3, T4.2 and T4.4 is in effect except that when an infringing boat has its spinnaker drawing at the time of the infringement, and she is within the zone, she shall lower her spinnaker, head of the sail below the boom gooseneck, complete a one-turn

penalty, reset her spinnaker, and have it drawing after the penalty. This modifies T1. RRS 44.3 will not apply in this regatta

- 12.2** PROPULSION RRS 42.3(c) is modified so that, on a free leg of the course, when surfing (rapid accelerating down the leeward side of a wave) or planing is possible, the boat's crew may, in order to initiate surfing or planing, pump the sheet, but not the guy controlling any sail, but only once for each wave or gust of wind. When the mainsail is pumped, only that part of the sheet between the crew member handling the sheet and the first block on the boom shall be used.

13. TIME LIMITS

- 13.1** The time limit for the first boat to finish is 90 minutes. Failure to finish within 25 minutes after the first boat sails the course and finishes will be scored TLE (time limit expired) and scored two more places than the last place finisher without a hearing. This changes RRS 35, A11 and A4.1
- 13.2** Races not started by 2:30pm on Sunday, shall be abandoned, the regatta terminated and scored on the basis of the race or races sailed.
- 13.3** A race will be deemed to have started by the deadline if the original warning signal is within the deadline, regardless of subsequent recalls.

14. PROTESTS AND REQUESTS FOR REDRESS

- 14.1** Protest forms will be available at the "Official Notice Board". Protests shall be delivered there within the protest time limit.
- 14.2** The protest time limit is 30 minutes after the finish Committee Boat has docked for the day and sounded a horn, which starts the time limit. The same protest time limit applies to all protests by the RC and jury. This changes RRS 61.3 and 62.2.
- 14.3** Notices of scheduled protest or requests for redress hearings will be posted on the Official Notice Board within 15 minutes of the protest time limit to inform competitors of hearings in which they are parties or may be parties affected by a request for redress. This will constitute notice to all parties under RRS 63.2 and its Prescription.
- 14.4** A list of boats that have been penalized for breaking rule 42 or have been disqualified by the protest committee will be posted before the protest time limits.
- 14.4.1** On the last day of the regatta a request for reopening a hearing shall be delivered:
- Within the protest time limit if the party requesting reopening was informed of the decision on the previous day.
 - No later than 30 minutes after the party requesting reopening was informed of the decision on that day. This changes rule 66.

15. SCORING

- 15.1** The number of races sailed will be at the discretion of the Race Committee. One race constitutes a regatta.
- 15.2** If less than 6 races are completed, each boat's total score will be the sum of her scores. This changes Appendix A.

- 16. SAFETY:** Each boat shall carry safety equipment conforming to government regulations, ILCA rules, and US Sailing or ISAF rules.

- 16.1** Prior to the preparatory signal of the first race of each day, each boat is required to check in by sailing near the stern of the race committee signal boat on starboard tack, hailing her sail number and receiving a clear signal of acknowledgment from a member of the race committee. Failure to check in may result in not being scored.
- 16.2** A boat that retires from a race shall notify the race committee as soon as possible.
- 16.3** A boat and its crew shall at all times keep clear of all commercial vessels and shall not maneuver in any manner which would cause a commercial vessel to be unable to sail their proper course or carry out their commercial functions in a normal manner.
- 16.3.1** A boat whose actions or maneuvers result in a Danger Signal (5 Horns or Sounds) from a commercial vessel may be protested only by the RC. This Changes RRS 60.1, 60.3.
- 16.3.2** The penalty for breaking this rule shall be disqualification from the entire regatta.

17. REPLACEMENT OF CREW OR EQUIPMENT

- 17.1** Substitution of competitors will not be allowed without prior approval of the race committee. The Race Committee will deny approval if, in its opinion, the substitution may result in giving the requester an advantage over the other competitors.
- 17.2** Substitution of damaged or lost equipment will be allowed.

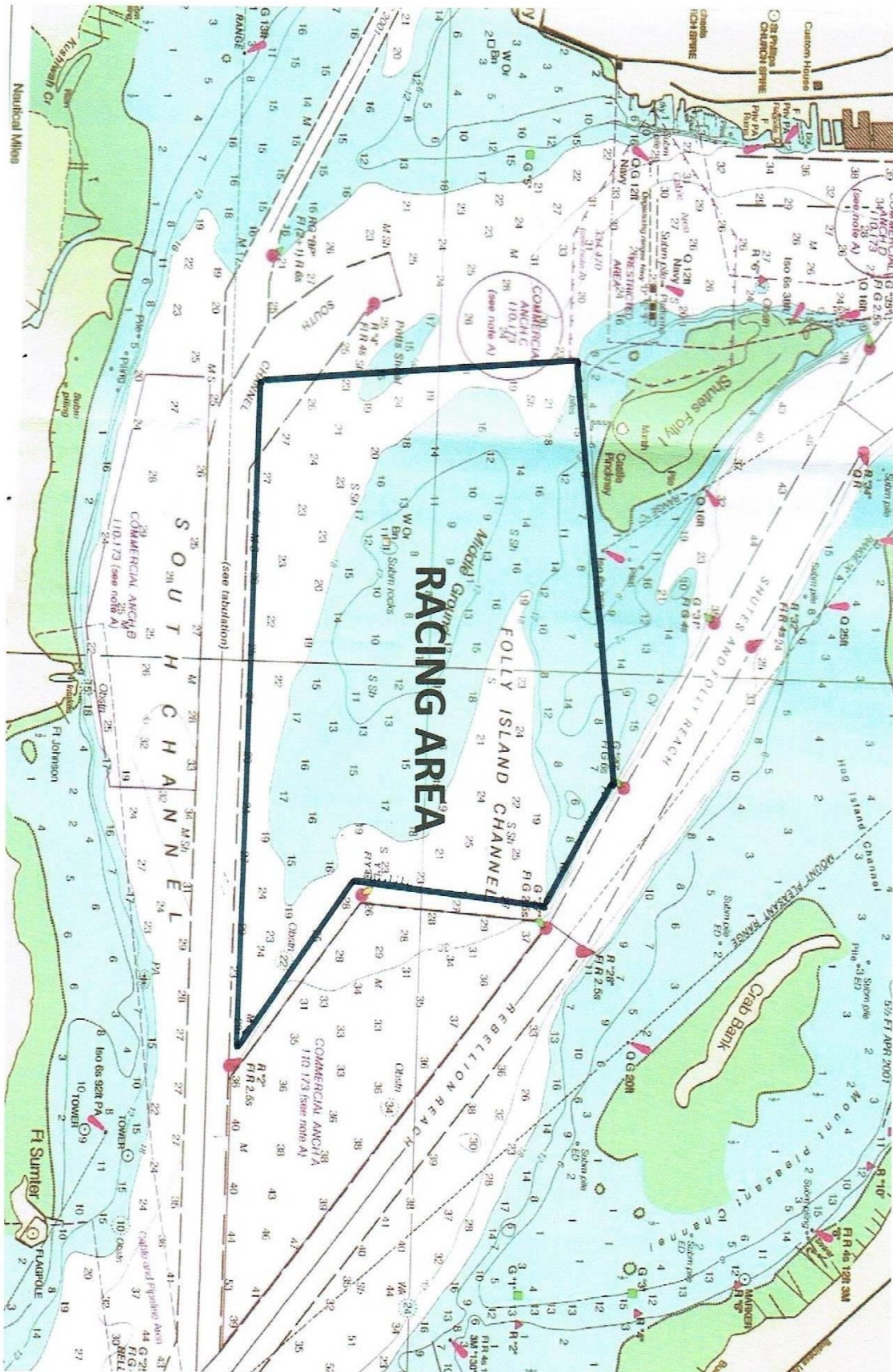
18. RADIO COMMUNICATIONS

- 18.1** The Race Committee will not respond to transmissions from competitors except to acknowledge retirement, protests, penalties reported or requests for emergency assistance. The Race Committee will use VHF channel 74. Alternate channels may be used at the discretion of the Race committee.
- 18.2** The Race Committee broadcasts (hails or other communications, also be considered broadcasts) concerning its intentions, the course to be sailed, starting times; course changes, etc. are a courtesy only. Failure of the Race Committee to make a broadcast, the channel of the broadcast, the timing of a broadcast, or the failure of a boat to hear a broadcast shall not be grounds for granting redress.

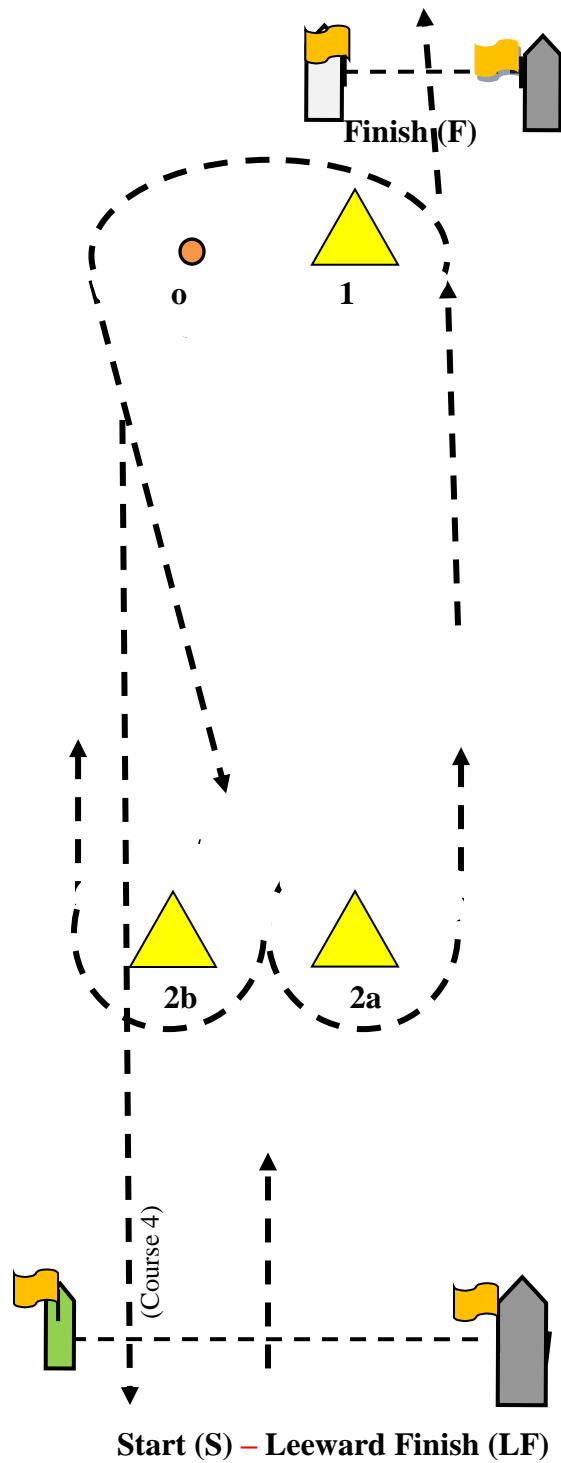
19. PRIZES: Prizes will be given as follows: Top four skippers and crew. Additional trophies may be awarded based on entries.

20. DISCLAIMER OF LIABILITY

- 20.1** Competitors participate in the regatta entirely at their own risk. See rule 4, decision to race. The organizing authority or the Carolina Yacht Club will not accept any liability for material damage or personal injury or death sustained in conjunction with or prior to, during, or after the regatta.



2016 Lightning Regatta Course Diagrams



Course	Legs	Marks
1	3	S-1-o-2 a/b- F
2	5	S-1-o-2a/b- 1-o-2 a/b- F
3	7	S-1-o-2a/b- 1-o-2 a/b-1-o-2 a/b- F
4	4	S-1-o-2a/b- 1-o- LF