



SAILING INSTRUCTIONS

VENTURA YACHT CLUB

2016 Lady Driver Race

HOSTED BY:

Ventura Yacht Club
1755 Spinnaker Drive
Ventura, California 93001
venturayachtclub.org
805-642-0426

1. RULES:

This race will be governed by the *rules* as defined in the *Racing Rules of Sailing* (RRS) and the 2016 Lady Driver Notice of Race and Sailing Instructions, except as any of these are altered by these Sailing Instructions or by any instructions that may be announced by the Race Committee (RC) from its station. The PHRF Marine Industry Racer (MIR) is not in effect. This modifies PHRF Class Rule 8. Except for brief breaks not to exceed five minutes in duration, a woman must be at the helm at all times. These breaks may not occur during the starting sequence or within five minutes of rounding a mark or finishing, nor at any time in which a tactical advantage would be gained.

2. ENTRIES:

Eligible boats may enter by completing registration with Ventura Yacht Club. Entry deadline is 0830 on race day, however, competitors are urged to register online prior to race day. Go to www.venturayachtclub.org and follow the link (On the Water>Racing>Registration) to Regatta Networks. It's easy! Additional information will also be available there. The entry fee is \$30 and can be paid online. PHRF area A Random Leg Course ratings will be used.

3. NOTICES TO COMPETITORS:

Notices to competitors will be posted on the VYC bulletin board in the lower patio.

4. CHANGES IN SAILING INSTRUCTIONS:

Changes in the Sailing Instructions will be posted before 0930 on the day they will take effect. Oral instructions from the RC on station on the water will be signaled by display of code flag "L" on the Committee Boat.

5. SCHEDULE OF RACE:

The start signal for the first class is scheduled for 1100 on Saturday, Oct. 15.

6. CLASSES:

Classes will be established at the skippers meeting. PHRF spinnaker and non-spinnaker classes are planned.

Class flags will be:

Class A: Red

Class B: White



SAILING INSTRUCTIONS



7. THE COURSES:

- 7.1 The courses will be chosen from the 2016 Lady Driver Course Chart which is part of these Sailing Instructions.
- 7.2 Designation of the course to be sailed will be signaled from the race committee boat before or with the warning signal for the first starting class. For succeeding classes, the course signal will be displayed with or soon after the warning signal for that class. This changes Rule 27.1.

8. CHECKING IN:

Each boat is requested to check-in. The check-in period begins after the RC boat is anchored. A boat may check-in either by sailing close by the stern of the committee boat and hailing her sail number until acknowledged by the RC or by calling the RC on VHF channel 69.

9. THE START:

- 9.1 The race will be started in accordance with Racing Rule 26. The order of the starts will be announced at the skipper's meeting.
- 9.2 The starting line S will be between the Mandalay buoy as the port-side mark and an orange flag or shape mounted on the Committee Boat as the starboard-side mark.
- 9.3 Boats whose preparatory signal has not been made shall keep clear of the starting area and of all boats whose preparatory signal has been made.

10. RECALLS:

- 10.1 Individual recalls will be signaled in accordance with Racing Rule 29.2 [code flag "X" and 1 sound signal].
- 10.2 General recalls will be signaled in accordance with Racing Rule 29.3 [code flag "first substitute" and 2 sound signals]. A new warning signal for the recalled class will be made one minute after the "first substitute" is lowered.
- 10.3 When a general recall has been signaled, the starts for the succeeding classes shall follow the new start for the recalled class.
- 10.4 After the starting signal, the Race Committee will attempt to hail the sail number(s) of the recalled boat(s) on VHF Channel 69.
- 10.5 The following shall not be grounds for granting redress:
 - a. Failure of a boat to hear the recall hail or broadcast.
 - b. A boat's position in the sequence of hailed numbers or broadcast numbers.
 - c. Failure of the Race Committee to hail or broadcast numbers.

11. THE FINISH:

- 11.1 The finish shall be on a line from the VYC clubhouse balcony to the green light standard (#3) at the end of the detached Ventura Harbor breakwater.
- 11.2 Competitors are requested to notify the RC when approximately 1/2 hour from the finish. If the RC is not on station, boats shall record their own finish times. The RC will monitor VHF Channel 69 throughout the race.



SAILING INSTRUCTIONS



12. TIME LIMIT:

If any boat in a class finishes before sunset the race is valid. If no boat in a class finishes before sunset, the race is abandoned for that class. For the purpose of this race, sunset shall be considered to be 1822 on October 15, 2016.

13. RETIREMENT:

A boat that has started and subsequently retires is requested to notify the RC as soon as possible. The RC will monitor VHF channel 69. Club phone number is 805-642-0426.

14. PROTESTS:

Protests shall be written on forms available at the club and shall be filed with the Race Committee within 1 hour of the finish time of the protesting boat (or within 1 hour of her return to harbor if she retires).

15. SCORING:

Scoring will be based on PHRF rating and course distance. The boat with the lowest corrected time in its class will be declared the winner.

16. PENALTIES:

Regarding Racing Rule 44, a boat may take a One-Turn penalty when she may have broken one or more rules of Part 2 in an incident while racing.

17. SAFETY:

Boats must carry the safety equipment required by the U.S. Safety Equipment Requirements (USSER) for U.S. Nearshore Races (Definition 1.0.3) as modified to add USSER 2.4.1 - 2.4.7 to require lifelines; except that coated lifelines are allowed (changes 2.4.4). A VHF Marine Radio with Channels 16 and 69 is required, but DSC/GPS capability, while recommended, is not required (changes 3.8.2). Refer to: <http://www.ussailing.org/safety/equipment-and-requirements/>. Minimum crew requirement is 2. Racers are reminded that they are bound by the International Regulations for Preventing Collisions at Sea.

18. INSURANCE:

Each participating boat shall be insured with valid third-party liability insurance.

19. NON-SPINNAKER CLASS DEFINITIONS:

19.1 No spinnakers or spinnaker-like sails such as flashers, cruising 'chutes, MPSs, gennakers, drifters, etc. or any nylon sails are allowed. All headsails must meet the measurements of Racing Rule 50.4.

19.2 Only one spinnaker pole or whisker pole may be used at a time and, when in use, shall be attached to the foremost mast.

19.3 Use of headsails larger than 155% LP carries a 6 second per mile penalty unless the boat is already handicapped for such larger sail.

19.4 Only one headsail may be carried set and must be attached to the headstay.

20. TROPHIES:

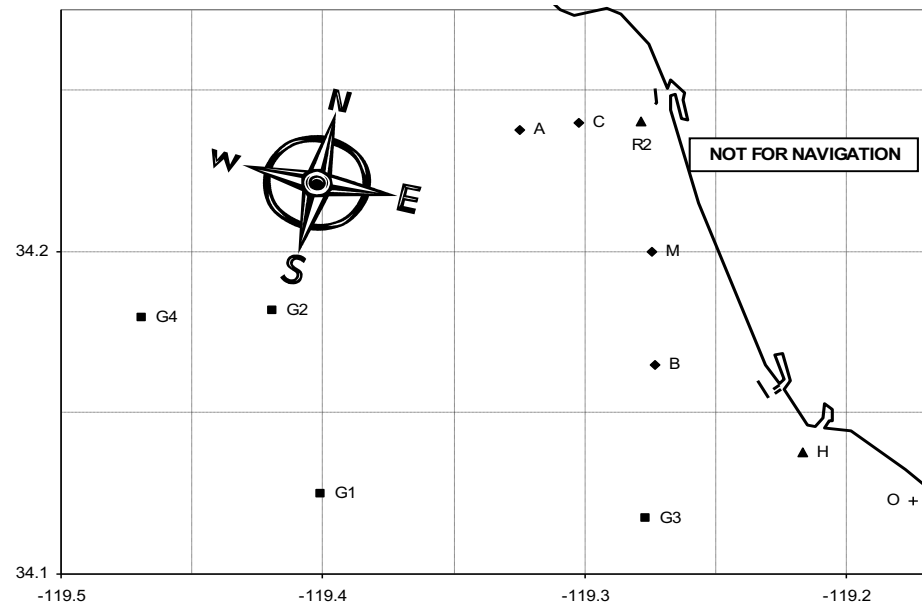
All Individual awards and series awards will be presented on Oct. 15. There will be an attitude adjustment period at VYC following the race.



SAILING INSTRUCTIONS

2016 Lady Driver Race Course Chart

#	Course	Approx. Heading to 1st Mark	Length
10	S Wp Mp R2s F	To be posted on R/C signal boat	5.9
11	S Wp Mp Wp Mp R2s F		8.9
12	S Wp Mp As F		9.66
13	S Wp Mp Wp Mp As F		12.66
14	S Wp Mp R2p Cp F		8.24
15	S Wp Mp R2p As F		10.98
16	S Wp Mp Wp Mp R2p Cp F		11.24
17	S Wp Mp Wp Mp R2p As F	13.98	
18	S Bs R2s F	165	7.02
19	S Bs As F	165	10.31
20	S G3s R2s F	165	12.8
21	S G3s As F	165	15.76
22	S G1s R2s F	220	17.37
23	S G2s F	250	15.89
24	S G2s Mp R2s F	250	17.91
25	S As F	300	6.66
26	S As R2p Cp F	300	9.09
27	S As R2p As F	300	12.0
28	S As Mp R2s F	300	10.38
29	S As Bp R2s F	300	14.03
30	S As Mp R2p As F	300	15.46



MARKS		APPROX LOCATION	
A	Fish Sticks spar buoy	L: 34° 14.4'N	Lo: 119° 19.9'W
B	"Wes" spar buoy	L: 34° 09.9'N	Lo: 119° 16.5'W
C	Chips spar buoy	L: 34° 14.4'N	Lo: 119° 18.2'W
M	Mandalay spar buoy	L: 34° 12.0'N	Lo: 119° 16.5'W
R2	Whistle buoy R"2V"	L: 34° 14.4'N	Lo: 119° 16.7'W
G1	Platform Gail	L: 34° 07.5'N	Lo: 119° 24.0'W
G2	Platform Gilda	L: 34° 10.9'N	Lo: 119° 25.1'W
G3	Platform Gina	L: 34° 07.0'N	Lo: 119° 16.6'W
W	Inflatable yellow buoy	1.5 miles from Mandalay spar buoy	