



Chili Chase Regatta

Galveston Bay Texas

November 5th 2016

Galveston Bay Cruising Association

1500 Marina Bay Dr. Suite 1592 • Building #113B • Clear Lake Shores, TX

Sailing Instructions

1. RULES

The regatta will be governed by the *rules* as defined in the current 2013-2016 *Racing Rules of Sailing*, the Notice of Race, any OD Class Rules and these Sailing Instructions.

The following RRS are modified herein:

Sailing Instruction 6.2 modifies RRS 62.1(a)

Sailing Instruction 9.2 & 9.3 modifies RRS 26

Sailing Instruction 13 modifies RRS 61

Sailing Instruction 15 modifies RRS 35

2. NOTICES TO COMPETITORS

Notices to Competitors will be posted at:

https://www.regattanetwork.com/clubmgmt/applet_club_events.php?CLUB_ID=162 .

Notices regarding Protests will also be posted on the door of the GBCA office.

3. CHANGES TO THE SAILING INSTRUCTIONS

Any change to the sailing instructions or notice of race will be posted before 0800 on the day it will take effect.

4. WARNING SIGNAL

The warning signal for the first start will not be before 1055 hours.

5. Racing Area

The racing area will be in the part of Galveston Bay between Seabrook and the Houston Ship Channel, and between San Leon and the Bayport Ship Channel. Boats shall not enter the Houston Ship Channel or Bayport Ship Channel while *racing*. The Houston Ship Channel and the Bayport Ship Channel are designated as obstructions.

6. RADIO COMMUNICATION

6.1 Radio communication will be conducted on VHF channel 69.

6.2 In addition to signaling Individual Recalls in accordance with RRS 29.1, as a courtesy, the Race Committee will attempt to broadcast the names or sail numbers of boats that have started early. Failure to make such a broadcast, failure of a boat to receive that broadcast, a boat's order in that broadcast, or the promptness of that broadcast will not be grounds for redress. This modifies RRS 62.1(a).

7. CHECK-IN PROCEDURE

All yachts intending to race shall check in with the Race Committee on VHF Channel 69 prior to their warning signal.

8. START LINE / FINISH LINE

The Start Line / Finish Line will be approximately 0.6nm south of Clear Lake channel marker 1, between an Orange Flag displayed from the Signal Boat and the course side of a nearby Orange Mark. The line will be squared to the orientation of the first mark for the start and re-squared to the orientation from the last mark.

9. THE START

9.1 The starting line will be between the staff displaying an orange flag on the Signal Boat on the starboard end and the course side edge of a nearby Mark at the port end of the line.

9.2 This is a reverse start (pursuit) race, with the (GPS) start time for each boat based on its PHRF rating following the 1100 hours. See the accompanying Appendix B for assigned boat start times. This modifies RRS 26

9.3 The Race Committee will give no additional starting signals, except to monitor and call individual boats OCS prior to their assigned start time with sound and the individual recall flag. This modifies RRS 26. Any boat(s) signaled as OCS at their respective starting *time* shall thereafter sail from the course side across the starting line or one of its extensions to the pre-start side before *starting*.

9.4 The signal boat *may* broadcast occasional time checks on VHF 69 until all boats have started.

10. COURSE and MARKS

10.1 Courses will be signaled by a numeral pennant correlating with the course diagrams described in Appendix A. The approximated heading and distance to each mark are also described.

10.2 Start will be Pursuit style according PHRF rating as described in Appendix B for the primary race. If a second race is attempted, the start will be according to the same schedule with adjustment to the next top of the hour.

10.3 Fixed mark courses will use marks "E", "H", "South boat cut 8" and two 8' Tetrahedrons dropped, one in front of the Todville Road shoreline and the second in front of the San Leon shoreline. Approximate coordinates and description of the marks are:

Mark	Approximate Coordinate	Description
Start/Finish Gate	N 29° 32.567' W 094° 59.545'	<i>RC Signal boat and a nearby orange Tetrahedron</i>
E	N 29° 35.787' W 094° 56.935'	<i>The Low Range Marker (Upper Range "A") in Galveston Bay. The mark is an orange and white structure near Houston Ship Channel Marker #73, 0.23 nm NNW of the old low range.</i>
H	N 29° 33.255' W 094° 56.542'	<i>A platform located in Galveston bay, approximately 1.3 nm WSW of the Houston Ship Channel marker #65.</i>
South Boat Cut 8	N 29° 32.417 W 094° 55.080'	<i>A channel marker in Galveston bay, near the Houston Ship Channel marker 61</i>
Todville Rd beach Tet	N 29° 34.500' W 094° 59.300'	<i>An anchored 8' Tetrahedron</i>
San Leon beach Tet	N 29° 31.570' W 094° 57.400'	<i>An anchored 8' Tetrahedron</i>

Boats shall not enter the Houston Ship Channel. The Houston Ship Channel is designated as an Obstruction. A chart showing the relative position of the marks will be available as Appendix A. This chart is schematic in nature and is not to be used for navigation.

11. THE FINISH

The Finish Line will be between a staff displaying an orange flag on the Signal Boat on the port end and the course side edge of the starboard end Orange Mark.

12. Shorten Course

If the Race Committee displays the "S" code flag for weather reasons, all classes will sail the shortened course. The race committee is prepared to recalculate the adjustments for the shortened course.

13. PROTESTS

The protest and redress procedures for this regatta will utilize basic elements of the new RRS Appendix T, a US Sailing Prescription. Protests shall be communicated to the Race Committee before leaving the race area and must be filed in writing within 2 hours of the last boat finishing. This modifies RRS 61. Protests shall be filed at the GBCA office.

14. SAFETY and WITHDRAWING PROCEDURES

14.1 Attention is called to RRS 4: Decision to Race, "The responsibility for a boat's decision to participate in a race or to continue *racing* is hers alone."

14.2 The Race Committee places high priority on accounting for every yacht participating in a race. It is imperative that any yacht withdrawing from a race makes its best and most persistent efforts to notify other parties of such withdrawal at the earliest opportunity. Withdrawing yachts should make every effort to contact the Race Committee and/or other nearby yachts to communicate the withdrawal via VHF channel 69. . If radio communication is unavailable, send a text message or leave a voice message on the Race Committee phone number **713.823.1577** Proper reporting of a withdrawal should include; yacht name, sail number and skipper's name.

15. TIME LIMIT

None, except we have an après race party scheduled on the GBCA Lounge Deck. This modifies RRS 35.

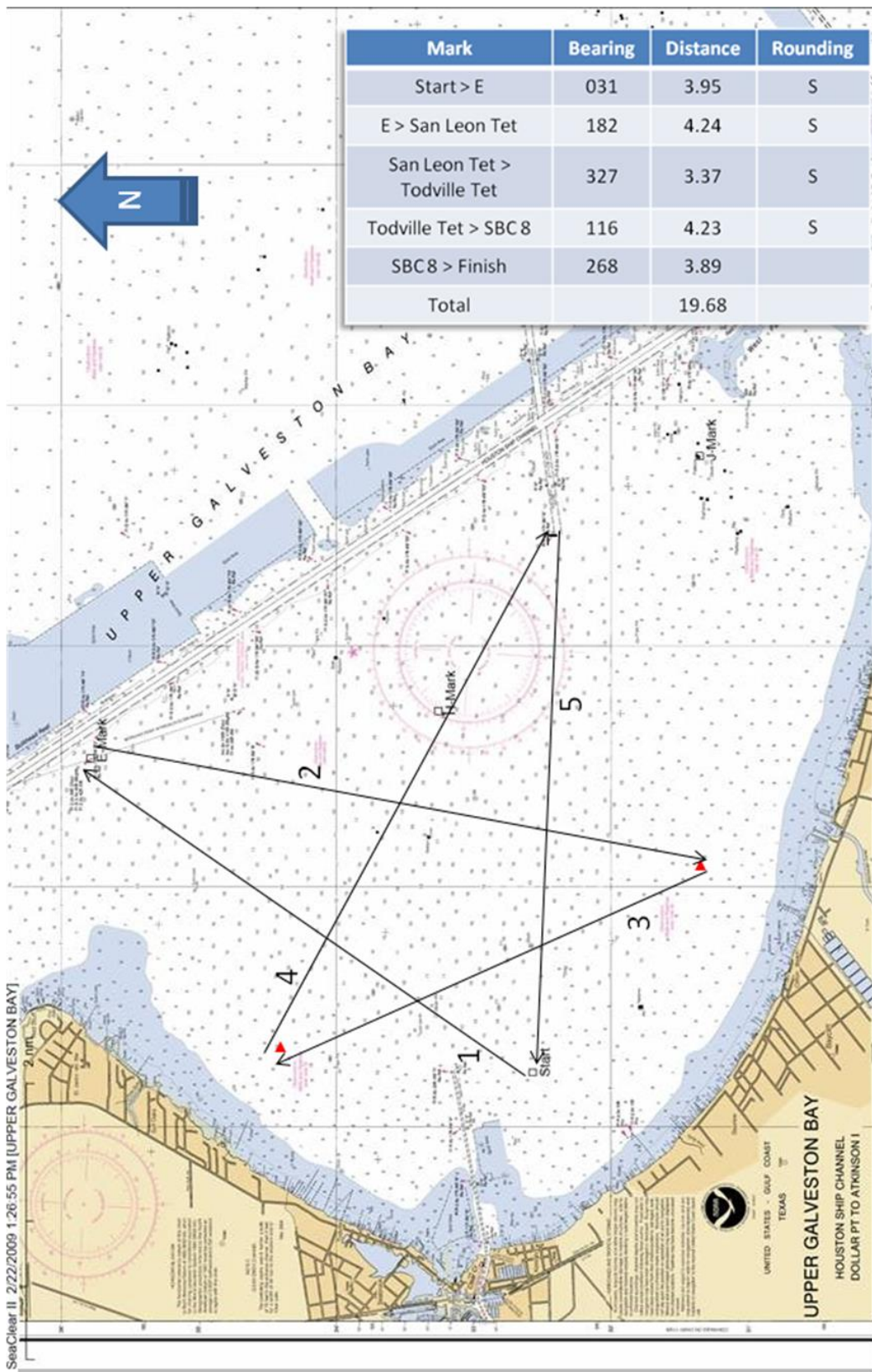
16. SCORING

The Race Committee will score the race with reverse start (pursuit) style race using the performance handicapping racing formula, time on distance, for each yacht, as determined by the Race Committee.

17. AWARDS PRESENTATION

Post-race party and awards presentation will be held at the GBCA office Saturday, November 5th.

Appendix A - Course 1 "Star"

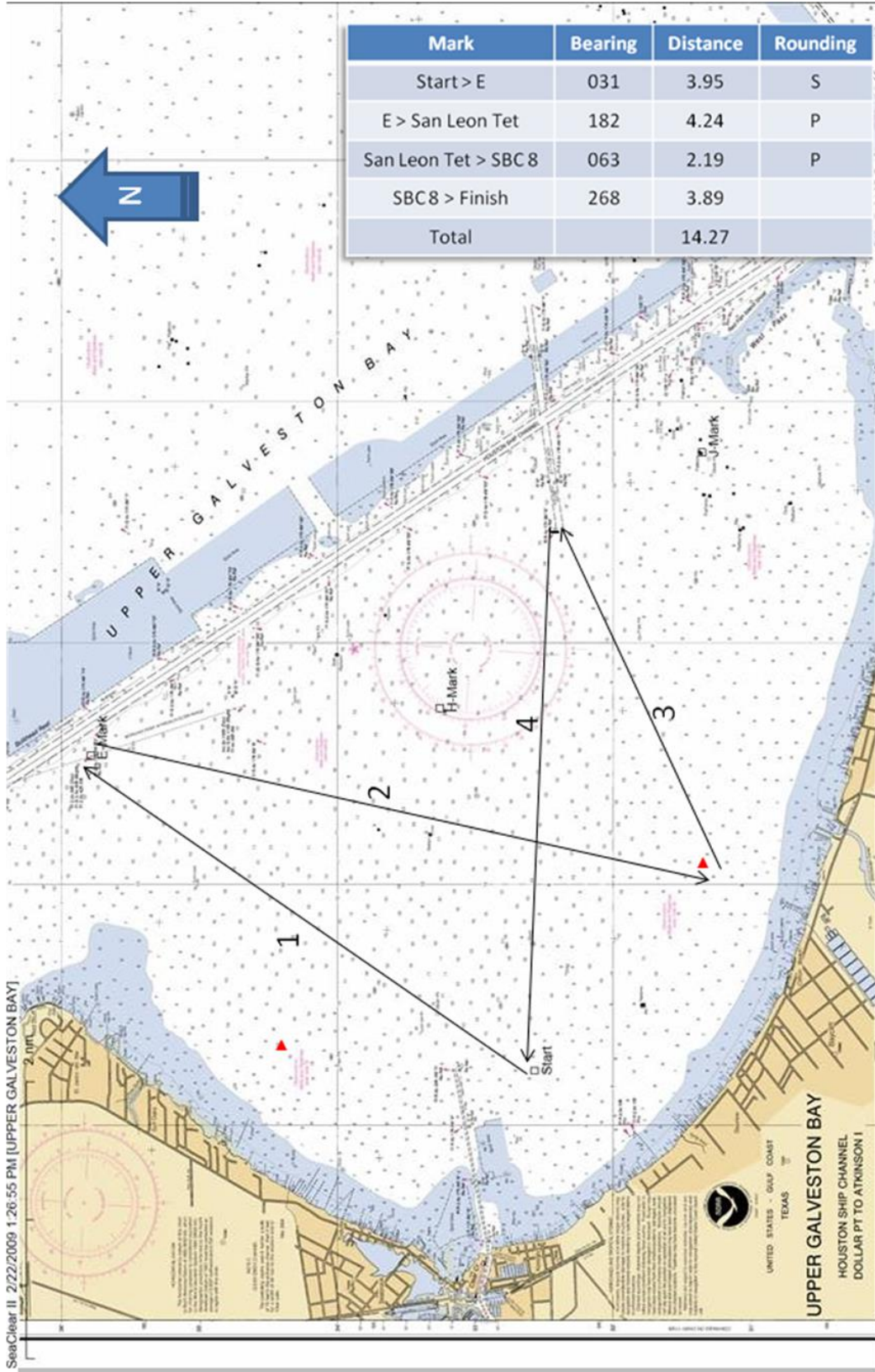


Appendix B - Course 1 "Star"

Start Time:
Distance:
MAX PHRF:

Start	Sail#	Skipper	Boat Name	Class/Fleet	PHRF
11:00:00	405	Jocelyn McCormack	Freedom	G.B.C.A. CruisingClub	224
11:07:32	133	Ronald Eddleman	Stellar of Course	G.B.C.A. CruisingClub	201
11:11:09	398	Ben Miller	Flyer	PHRF NonSpin	190
11:11:09	4398	Jim Miller	Renaissance	G.B.C.A. CruisingClub	190
11:11:28	360	Bill Tarnick	Sunspot Baby	G.B.C.A. CruisingClub	189
11:14:45	114	Rafael Brom	SELAH	G.B.C.A. CruisingClub	179
11:16:24	578	Gary L Thies	Student Driver	PHRF Spin B(Non-Sprit)	174
11:21:39	20991	Victor Scammel Jr	LAZZ	PHRF NonSpin	158
11:22:57	044	Robert Best	Wine Knot	G.B.C.A. CruisingClub	154
11:23:17	586	Marty Pedowicz	Hobgoblin	G.B.C.A. CruisingClub	153
11:23:56	584	Jim Foster	Big D	PHRF NonSpin	151
11:25:35	None	Daniel Knierien	The Gail Mary	G.B.C.A. CruisingClub	146
11:26:14	110	Robin Rice	Restless	PHRF Spin A(Sprit)	144
11:29:51	717	Greg Green	Alive and Free	G.B.C.A. CruisingClub	133
11:31:09	53	Chris Haas	SolAire	PHRF Spin B(Non-Sprit)	129
11:37:04	10312	Roy Olsen	Danelaw	PHRF Spin B(Non-Sprit)	111
11:38:03	77	George Cushing	77	PHRF Spin A(Sprit)	108
11:39:21	21335	Walter Horton	Firewater	G.B.C.A. CruisingClub	104
11:41:00	31	Dan Sullivan	Little Joe	PHRF Spin A(Sprit)	99
11:41:59	45	Gerhard Wittich	Figaro	PHRF Spin B(Non-Sprit)	96
11:42:58	168	Walter Barnett	Osprey	PHRF NonSpin	93
11:43:57	3407	Warren Miller	Renovation	PHRF Spin B(Non-Sprit)	90
11:47:53	296	J B Bednar	Stinger	PHRF Spin A(Sprit)	78

Appendix A - Course 2 "Bowtie"



Appendix B - Course 2 "Bowtie"

Start Time: 11:00:00 **Distance:** 14.27 **MAX PHRF:** 224

Start	Sail#	Skipper	Boat Name	Class/Fleet	PHRF
11:00:00	405	Jocelyn McCormack	Freedom	G.B.C.A. CruisingClub	224
11:05:28	133	Ronald Eddleman	Stellar of Course	G.B.C.A. CruisingClub	201
11:08:05	398	Ben Miller	Flyer	PHRF NonSpin	190
11:08:05	4398	Jim Miller	Renaissance	G.B.C.A. CruisingClub	190
11:08:19	360	Bill Tarnick	Sunspot Baby	G.B.C.A. CruisingClub	189
11:10:42	114	Rafael Brom	SELAH	G.B.C.A. CruisingClub	179
11:11:53	578	Gary L Thies	Student Driver	PHRF Spin B(Non-Sprit)	174
11:15:41	20991	Victor Scammel Jr	LAZZ	PHRF NonSpin	158
11:16:38	044	Robert Best	Wine Knot	G.B.C.A. CruisingClub	154
11:16:53	586	Marty Pedowicz	Hobgoblin	G.B.C.A. CruisingClub	153
11:17:21	584	Jim Foster	Big D	PHRF NonSpin	151
11:18:33	None	Daniel Knierien	The Gail Mary	G.B.C.A. CruisingClub	146
11:19:01	110	Robin Rice	Restless	PHRF Spin A(Sprit)	144
11:21:38	717	Greg Green	Alive and Free	G.B.C.A. CruisingClub	133
11:22:35	53	Chris Haas	SolAire	PHRF Spin B(Non-Sprit)	129
11:26:52	10312	Roy Olsen	Danelaw	PHRF Spin B(Non-Sprit)	111
11:27:35	77	George Cushing	77	PHRF Spin A(Sprit)	108
11:28:32	21335	Walter Horton	Firewater	G.B.C.A. CruisingClub	104
11:29:43	31	Dan Sullivan	Little Joe	PHRF Spin A(Sprit)	99
11:30:26	45	Gerhard Wittich	Figaro	PHRF Spin B(Non-Sprit)	96
11:31:09	168	Walter Barnett	Osprey	PHRF NonSpin	93
11:31:52	3407	Warren Miller	Renovation	PHRF Spin B(Non-Sprit)	90
11:34:43	296	J B Bednar	Stinger	PHRF Spin A(Sprit)	78