



# zhik® 29ER WORLD CHAMPIONSHIP



July 31 to August 5, 2017

Alamitos Bay Yacht Club  
Long Beach, California, USA

## SAILING INSTRUCTIONS

### INCORPORATING SAILING INSTRUCTION CHANGE #1 JULY 29, 2017

*The notation '[DP]' in a rule in the SIs means that the penalty for a breach of that rule may, at the discretion of the protest committee, be less than disqualification.*

The organizing authority is the Alamitos Bay Yacht Club, Long Beach CA on behalf of the International 29er Class Association.

### 1. RULES

- 1.1. The regatta will be governed by the rules as defined in *The Racing Rules of Sailing*.
- 1.2. The following prescriptions of US national authority will apply: Prescriptions to RRS 61.4, 67 and 76.1, which are stated in full below:
  - 1.2.1. RRS 61.4 – Fees for Protests and Requests for Redress – US Sailing prescribes that no fees shall be charged for protests or requests for redress.
  - 1.2.2. RRS 67 – Damages – US Sailing prescribes that:
    - (a) A boat that retires from a race or accepts a penalty does not by that action alone admit liability for damages.
    - (b) A protest committee shall find facts and make decisions only in compliance with the rules. No protest committee or US Sailing Appeals authority shall adjudicate any claim for damages. Such a claim is subject to the jurisdiction of the courts.
    - (c) A basic purpose of the rules is to prevent contact between boats. By participating in an event governed by the rules, a boat agrees that responsibility for damages arising from any breach of the rules shall be based on fault as determined by application of the rules, and that she shall not be governed by the legal doctrine of “assumption of risk” for monetary damages resulting from contact with other boats.
  - 1.2.3. RRS 76.1 – Exclusion of Boats or Competitors – US Sailing prescribes that an organizing authority or race committee shall not reject or cancel the entry of a boat or exclude a competitor eligible under the Notice of Race and Sailing Instructions for an arbitrary or capricious reason, or for the reason of race, color, national origin, gender, sexual orientation, or age.

### 2. ADDITIONAL IDENTIFICATION

While racing each boat shall display a colored ribbon or a colored placard corresponding to the fleet to which she has been assigned and attached to mast top or inserted in mainsail pocket. Ribbons and placards and instructions for attachment will be available from the race office. [DP]

### 3. NOTICES TO COMPETITORS

- 3.1. Notices to competitors will be posted on the official notice board located at the Alamitos Bay Yacht Club on the Glass Wall facing the boat basin. Except for notices of protests, all official



regatta notices will be posted here. In addition, the race committee will attempt to post competitor Notices on the event website at [www.29erworlds.org/event/notice-board](http://www.29erworlds.org/event/notice-board).

- 3.2. Notices of protests will be posted on the protest notice board located inside the main clubhouse entrance.

**4. CHANGES TO SAILING INSTRUCTIONS**

Any change to the sailing instructions will be posted before **1000** on the day it will take effect, except that any change to the schedule of races will be posted no later than one (1) hour after the close of the protest filing time on the day before it will take effect.

**5. SIGNALS MADE ASHORE**

- 5.1. Signals made ashore will be displayed from the flagpole of Alamitos Bay Yacht Club.
- 5.2. When flag AP is displayed ashore. '1 minute' is replaced with 'not less than 60 minutes' in the race signal AP. This changes RRS Race Signals, AP.
- 5.3. Flag D with one sound means: 'The warning signal will be made not less than 60 minutes after flag D is displayed'. Boats shall not leave their allocated berths until this signal is made for their fleet. [DP]

**6. FORMAT OF RACING**

The regatta will consist of a qualifying series and a final series.

**6.1. Qualifying Series:**

- (a) For the qualifying series boats will be assigned to fleets Yellow, Blue, ~~Red~~, ~~Green~~ of, as nearly as possible, equal size and ability. Initial fleet assignments will be made by a seeding committee appointed by the organizing authority, and posted by 0830 on the first day of racing.
- (b) In the qualifying series boats will be reassigned to fleets after each day of racing, except if on the first day only one race is completed. If all fleets have completed the same number of races, boats will be reassigned on the basis of their ranks in the series. If all fleets have not completed the same number of races the series scores for reassignment will be calculated for those races, numbered in order of completion, completed by all fleets. Reassignments will be made as follows:

<b>Rank in series</b>	<b>Fleet assignment</b>
First	Yellow
Second	Blue
Third	<b><u>Blue</u></b>
Fourth	<b><u>Yellow</u></b>
Fifth	<b><u>Yellow</u></b>
Sixth	<b><u>Blue</u></b>
and so on.	

- (c) Assignments will be based on the ranking available at 18:00 that day regardless of protests or requests for redress not yet decided.



# zhik® 29ER WORLD CHAMPIONSHIP



(d) If all fleets have not completed the same number of races by the end of a day, the fleets with fewer races will continue racing the following day until all fleets have completed the same number of races. All boats will thereafter race in the new fleets.

## 6.2. Final Series:

- (a) Boats will be assigned to final series fleets Gold, Silver, Bronze, ~~and (at the discretion of the race committee) Emerald~~, on the basis of their ranks in the qualifying series. **The 50 boats ranked highest in the qualifying series will be assigned to the Gold fleet.** The ~~Gold~~, Silver **and** ~~Bronze and Emerald~~ fleets will be of equal size. If the total number of boats to be assigned to these fleets is not evenly divisible, the first extra position will be assigned to the ~~Gold fleet then~~ Silver fleet.
- (b) Any recalculation of qualifying series ranking after boats have been assigned to final series fleets will not affect the assignments except that a redress decision may promote a boat to a higher fleet.
- (c) The top three competitors of each day in the Gold fleet shall wear leader jerseys and display sail dots as directed by the organizing authority. These items will be supplied by the organizing authority.

## 7. SCHEDULE OF RACES

### 7.1.

Competitor Meeting Schedule on the Patio at ABYC		
Sunday 30 <sup>th</sup> July	1700	Coaches Meeting with the OA
	1830	Opening Ceremony & Competitors' Meeting
Each Day of Racing	<b>0930</b>	Daily Competitors' Meeting
	After Racing	Competitor Debrief
Saturday 5 <sup>th</sup> August	After Racing	Prize Giving & Closing Ceremony

### 7.2.

Racing Schedule	
Monday 31 <sup>st</sup> July	Qualifying series – 3 races
Tuesday 1 <sup>st</sup> August	Qualifying series – 4 races
Wednesday 2 <sup>nd</sup> August	Qualifying series – 3 races
Thursday 3 <sup>rd</sup> August	Final series – 3 races
Friday 4 <sup>th</sup> August	Final series – 4 races
Saturday 5 <sup>th</sup> August	Final series – 3 races

7.3. One extra race per day may be sailed, provided that the event becomes no more than one race ahead of schedule and the change is according to SI 3.



- 7.4. The scheduled time of the warning signal for the first race each day is 1155. This changes NoR 6.8.
- 7.5. To alert boats that a race or sequence of races will begin soon, an orange flag will be displayed with one sound for at least four minutes before a warning signal is displayed.
- 7.6. On Saturday 5th August, the first warning signal **for a race** will not be made after 1500. **However, after this initial warning signal, any warning signal that follows one or more postponements, general recalls or abandonments may occur after 1500.**

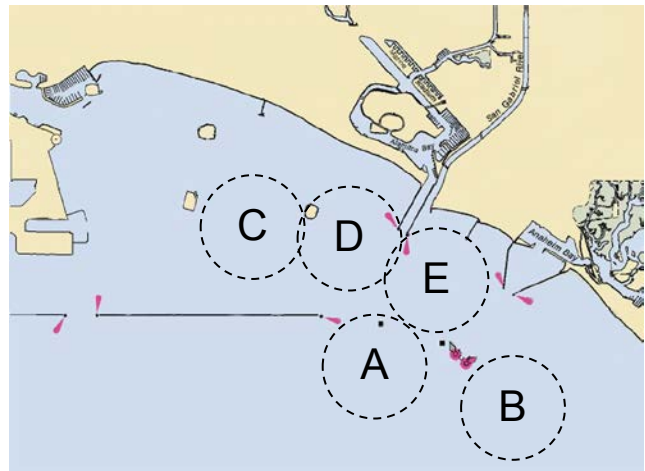
**8. CLASS FLAGS**

8.1. Class flags will be the class insignia on a colored flag, as follows:

<b>Qualifying fleets</b>	<b>Final fleets</b>	<b>Color</b>
Yellow	Gold	Yellow
Blue	Silver	Blue
Red	Bronze	Red
<b>Green</b>	<b>Emerald</b>	<b>Green</b>

**9. RACING AREAS**

- 9.1. Location of racing areas will be as shown opposite.
- 9.2. The starting area is defined as a rectangle covering the area 100 meters to both windward and leeward of the starting line and 100 meters to both port and starboard of either end or the starting line.
- 9.3. Assignments of fleets to racing areas will be posted before flag D (SI 5.3) is displayed.



**10. THE COURSE**

- 10.1. The diagram in Attachment A shows the course, including the course signals, the order in which marks are to be passed and the side on which each mark is to be left.
- 10.2. No later than the warning signal, the race committee signal boat will display the approximate compass bearing of the first leg.
- 10.3. Courses will not be shortened. This changes RRS 32.
- 10.4. The course shall be signaled by placards displayed on the signal boat.

**11. MARKS**

- 11.1. Marks 1, 2S and 2P will be yellow inflatable buoys.
- 11.2. New marks as provided in SI 13.1 will be orange marks.
- 11.3. Starting marks and finishing marks will be race committee vessels.

**12. THE START**

- 12.1. The starting line will be between staffs displaying orange flags on starting marks.



- 12.2. Boats whose warning signal has not been made shall avoid the starting area during the starting sequence for other races. [DP]
- 12.3. A boat starting later than 4 minutes after her starting signal will be scored Did Not Start without a hearing. This changes RRS A4 and A5.
- 12.4. Individual and general recall flags will be displayed by both race committee starting line boats.

**13. CHANGE OF THE NEXT LEG OF THE COURSE**

- 13.1. To change the next leg of the course, the race committee will lay a new mark (or move the finishing line) and remove the original mark as soon as practicable. When in a subsequent change a new mark is replaced, it will be replaced by an original mark.

**14. THE FINISH**

The finishing line will be between staffs displaying orange flags on the finishing marks.

**15. PENALTY SYSTEM**

- 15.1. RRS 44.1 is changed so that the Two-Turns Penalty is replaced by the One-Turn Penalty.
- 15.2. Appendix P will apply as changed by SIs 15.3, 15.4 and 15.5.
- 15.3. Rule P2.1 will be changed as follows: When a boat is first penalized under rule P1 her penalty shall be a One-Turn Penalty under rule 44.2. If she fails to take it she shall be disqualified without a hearing.
- 15.4. Rule P2.2 will be changed as follows: When a boat is penalized a second or subsequent time during the regatta, her penalty shall be to promptly retire from the race. If she fails to do so she shall be disqualified without a hearing and her score shall not be excluded.
- 15.5. Rule P2.3 will not apply.
- 15.6. Decisions of the International Jury will be final as provided in RRS 70.5.

**16. TIME LIMITS & TARGET TIMES**

- 16.1. Time limits and target times are as follows:
 

<b>Time limit</b>	<b>Mark 1 Time limit</b>	<b>Target time</b>
<b>45</b> minutes	15 minutes	30 minutes
- 16.2. If no boat has passed Mark 1 within the Mark 1 time limit or if no boat has finished within the Time limit the race will be abandoned. Failure to meet the target time will not be grounds for redress. This changes RRS 62.1(a).
- 16.3. Boats failing to finish within 10 minutes after the first boat sails the course and finishes will be scored Did Not Finish Time Limit Expired without a hearing. This changes RRSs 35, A4, and A5.

**17. PROTESTS & REQUESTS FOR REDRESS**

- 17.1. Protest forms are available at the protest desk located inside the main clubhouse entrance. Protests and requests for redress or reopening shall be delivered there within the appropriate time limit.
- 17.2. For each fleet, the protest time limit is 90 minutes after the last boat has finished the last race of the day, after instruction 16.3 has been applied to that race, or the race committee signals no more racing today, whichever is later.



# zhik® 29ER WORLD CHAMPIONSHIP



- 17.3. Notices will be posted no later than 30 minutes after the protest time limit to inform competitors of hearings in which they are parties or named as witnesses. Hearings will be held in the main clubhouse, beginning at the time posted.
- 17.4. Notices of protests by the race committee or jury may be posted to inform boats under RRS 61.1(b).
- 17.5. A list of boats that, under SI 15.2, have been penalized for breaking RRS 42 will be posted.
- 17.6. Breaches of SIs which are annotated '[NP]' will not be grounds for a protest by a boat. This changes rule RRS. 60.1(a). Penalties for these breaches may be less than disqualification if the jury so decides.
- 17.7. On the last scheduled day of racing a request for reopening a hearing shall be delivered:
  - a) within the protest time limit if the requesting party was informed of the decision on the previous day.
  - b) no later than 30 minutes after the requesting party was informed of the decision on that day. This changes rule 66.
- 17.8. If rule Appendix N1.4(b) applies, the time limit for requesting a hearing under that rule is 30 minutes after the party was informed of the panel's decision.
- 17.9. On the last scheduled day of racing a request for redress based on a jury decision shall be delivered no later than 30 minutes after the decision was posted. This changes RRS 62.2.
- 17.10. Decisions of the international jury will be final as provided in RRS 70.5.

## 18. ARBITRATION

Appendix T Arbitration applies

## 19. SCORING

- 19.1. Five races are required to be completed by each fleet to constitute a qualifying series. If 5 races are not completed as scheduled, the qualifying series will be extended to complete them.
- 19.2. One race is required to be completed to constitute a final series.
- 19.3. If at the end of the qualifying series some boats have more race scores than others, scores for the most recent races will be excluded so that all boats have the same number of race scores.
- 19.4. For the qualifying series, RRS A4.2 is changed so that the scores are based on the number of boats assigned to the largest fleet.
- 19.5. Except for race scores excluded under Si 19.3, a boat's regatta score will be the total of her race scores from her final-series races plus points equal to her qualifying-series rank, which shall not be discarded.
- 19.6. Each final series fleet will be scored separately. Different final series fleets need not have completed the same number of final races. The boats in the Gold fleet will be ranked highest, etc.
- 19.7. Series scores (apply separately to qualifying and final series):
  - (a) When fewer than 5 races have been completed, a boat's series score will be the total of her race scores.
  - (b) When from 5 to 8 races have been completed, a boat's series score will be the total of her race scores excluding her worst score.
  - (c) When 9 or more races have been completed, a boat's series score will be the total of her race scores excluding her two worst scores.



## zhik® 29ER WORLD CHAMPIONSHIP



- 19.8. To request correction of an alleged error in posted race or series results, a boat shall complete a scoring enquiry form available at the race office.

### 20. SAFETY REGULATIONS

- 20.1. While afloat, competitors shall wear either a US Coast Guard-approved personal flotation device, or a flotation device that conforms to the International 29er Class Rules adequate for the conditions. [DP]
- 20.2. **Check-out and check-in:** The requirements of this instruction are specified for the safety of competitors. [DP]
- 20.2.1. Prior to leaving shore, each boat must scan their RFID wristband at the provided kiosk, located near the race office. Sailors must scan back in when returning to shore within the protest time limit. It is the responsibility of the sailor to visibly confirm their sail number or name when checking in/out with the kiosk. Wristbands will be issued at registration (1 per boat). Replacement of lost wristbands will cause a not refundable fee of \$10. The penalty for a breach of this SI will be 3 points applied to the first race of the day. This changes RRS 63.1.
- 20.2.2. Before the warning signal on the first race each day, all boats shall sail by the stern of the race committee signal boat, hail her sail number and obtain the acknowledgment of the race committee.
- 20.2.3. Any competitor NOT going out to the race course that day, shall notify the race office as soon as they know they will not be racing.
- 20.3. A boat that retires from a race shall notify the race committee as soon as possible. [DP]
- 20.4. Under all circumstances, coaches and other support boats are expected to assist any boat in distress. [DP]
- 20.5. All coach and support boats are requested to assist the rescue organization. Search and rescue instructions will be given on the course designated VHF channel. All coach and support boats are required to monitor the course designated VHF channel. [DP]

### 21. REPLACEMENT OF CREW

- 21.1. Substitution of competitors will not be allowed without prior written approval of the race committee. [DP]
- 21.2. Substitution of damaged or lost equipment will not be allowed unless approved by the race committee. Requests for substitution shall be made to the committee at the first reasonable opportunity. [DP]

### 22. EQUIPMENT & MEASUREMENT CHECKS

- 22.1. A boat or equipment may be inspected at any time for compliance with the class rules and sailing instructions. On the water, a boat can be instructed by a race committee equipment inspector or measurer to proceed immediately to a designated area for inspection.
- 22.2. Only one set of sails and one forestay may be used during the regatta.

### 23. EVENT ADVERTISING [NP]

Boats shall display the event advertising supplied by the organizing authority on both side of the forward 25% of the hull and on the forward part of each side of the boom. If this rule is broken World Sailing Regulation 20.9.2 applies. [DP]



# zhik® 29ER WORLD CHAMPIONSHIP



## 24. OFFICIAL BOATS [NP]

Official boats will be marked as follows:

Race committee boats



Jury boats



## 25. SUPPORT BOATS

- 25.1. Support boats shall register at the race office during the registration period. All support boats will be required to comply with local legislation and event support boat regulations. [DP]
- 25.2. Coaches are required to complete on-site registration and pay the appropriate fee as per NoR 4.3 at the race office or online. [DP]
- 25.3. Support boats shall display their national letters on a flag or outboard covers. [DP]
- 25.4. If called upon, support boats will be required to act as rescue boats. [DP]
- 25.5. Team leaders, coaches and other on-the-water-support personnel shall stay outside areas where boats are racing from the time of the preparatory signal until all boats have finished or retired or the race committee signals a postponement, general recall or abandonment. This rule is not applicable when assisting a boat in distress. [DP]
- 25.6. Team leaders, coaches and other on-the-water-support personnel are required to carry a working VHF radio with US channels. [DP]

## 26. TRASH DISPOSAL [NP]

Trash may be placed aboard support and race committee boats. [DP]

## 27. BERTHING [NP]

Boats shall be stored overnight on a public beach in Alamitos Bay adjacent to Alamitos Bay Yacht Club. Security will be provided during the regatta. [DP]

## 28. RADIO COMMUNICATION

- 28.1. The Race Committee will use the following VHF Channels for communication:  
Channel 68 – Course 1 Patience  
Channel 69 – Course 2 Varee
- 28.2. Except in an emergency, a boat shall neither make radio transmissions while racing nor receive radio communications not available to all boats. This restriction includes mobile telephones. [DP]

## 29. GPS TRACKING UNITS [NP]

- 29.1. All boats are being provided with GPS tracking units supplied by the OA.
- 29.2. Before leaving shore to race, a boat's representative shall collect her tracking module and ribbon or placard between 0800 and 1000 on the days of the Qualifying series and the Final series at the Tracking Desk located in the race office. [DP]





# zhik<sup>®</sup> 29ER WORLD CHAMPIONSHIP



- 29.3. GPS tracking units and ribbon or placard are to be returned to the Tracking Desk no later than the expiration of the protest time limit each day. [DP]
- 29.4. Failure to comply with the requirements of this sailing instruction may result in a competitor being protested by the race committee.

## 30. PRIZES

- 30.1. Prizes will be awarded to the first three boats in the gold fleet, and other fleets.
- 30.2. Class perpetual trophies will be awarded to:
  - Overall winning team
  - Top Female team
  - Top Youth team

## 31. DISCLAIMER OF LIABILITY

Competitors participate in the regatta entirely at their own risk. See RRS 4, Decision to Race. The organizing authority will not accept any liability for material damage or personal injury or death sustained in conjunction with or prior to, during, or after the regatta.

## 32. INSURANCE

Each participating boat shall be insured with valid third-party liability insurance with a minimum cover of US\$300,000 per incident or the equivalent.

## 33. RIGHTS TO USE NAME AND LIKENESS

By participating in this event, competitors automatically grant to the organizing authority and the event sponsors the right, in perpetuity, to make, use, and show, at their discretion, any photography, audio and video recording, and other reproductions of them made at the venue or on the water from the time of their arrival at the venue, until their final departure, without compensation.



Attachment A - COURSE DIAGRAM

L	COURSE: WINDWARD / LEEWARD with reaching finish
Signal:	Mark Rounding Order:
2	Start, 1, 2s/2p, 1, 2p, Finish
3	Start, 1, 2s/2p, 1, 2s/2p, 1, 2p, Finish

gB

