



2017 Leukemia Cup Regatta

Organizing Authority: The Cleveland Yachting Club

July 21-23, 2017

SAILING INSTRUCTIONS PHRF and One Design

The notation '[DP]' in a rule in the SI means that the penalty for a breach of that rule may, at the discretion of the protest committee, be less than disqualification

The notation '[NP]' in a rule in the SI means that instruction is not grounds for protest or a request for redress by a boat. This changes RRS 60.1.

1 RULES

- 1.1 The regatta is governed by the rules as defined in the current *Racing Rules of Sailing* (RRS).
- 1.2 US Sailing prescription to RRS 63.2 and 63.4 shall not apply.

2 NOTICES TO COMPETITORS AND INFORMATION MEETING(S)

- 2.1 Notices to competitors shall be posted on the official Notice Board located in the Center Isle.

3 CHANGES TO SAILING INSTRUCTIONS

- 3.1 Except for instructions 3.2 and 3.3 below, any change to the sailing instructions shall be posted not less than two (2) hours prior to the first scheduled race on the day it shall take effect.
- 3.2 Any change to the location of a racing area shall be posted before 0800 on the day it will apply.
- 3.3 Any change to the schedule of races will be posted by the later of 1800 or the protest time limit on the day before it will take effect.

4 SIGNALS MADE ASHORE

- 4.1 Signals made ashore shall be displayed from the flagpole located south of the CYC clubhouse.
- 4.2 When flag AP is displayed ashore, "1 minute" is replaced with "not less than 60 minutes" in race signal AP. *This changes race signals AP*
- 4.3 Since numeral pennants are used as class flags, the RRS Race Signals section "AP over a numeral pennant 1-9" is deleted in its entirety.
- 4.4 When a signal flag is posted ashore, the code flag corresponding to each course name shall be displayed to indicate which course the signal is designated for. If no course designator is posted, the signal shall be for all courses.

5 SCHEDULE OF RACES


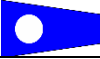
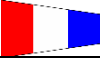

- 5.1 A total of seven (7) races are scheduled for PHRF and One Design Classes.

<u>Race</u>	<u>Type</u>	<u>Day/Date</u>	<u>First Warning</u>
Random Leg Race	Fixed and Drop Marks	Friday, July 21	6:55 PM
3 races	Drop Marks	Saturday, July 22	9:55 AM
3 races	Drop Marks	Sunday, July 23	9:55 AM

- 5.2 One (1) race is scheduled Friday.
- 5.3 Back-to-back races are scheduled for Saturday and Sunday.
- 5.4 If a race is abandoned or postponed it may be sailed on the following day up to one extra race per day.
- 5.5 Second and subsequent races for each class/division will start shortly after last finisher of that class' preceding race.
- 5.6 After the first race of the day, the Race Committee may change the start order to facilitate the timely start of the next race. Class flags will determine the start order.

5.7 No warning signal will be made after 1:00 PM on the last scheduled day of racing

6 CLASS FLAGS AND INITIAL ORDER OF START

PHRF A - Code flag #1 
PHRF B - Code flag #2 
J/105 - Code flag #3 
T-Ten - Code flag #4 

Classes may be combined.

7 RACING AREA

7.1 Random Leg Race (Friday) - The start will be between the CYC D mark and the staff flying the Orange flag on the Race Committee Signal boat at the starboard end of the line. Courses and directions will be posted on the Official Notice Board. See "Courses - Illustration 1"

7.3 All Saturday and Sunday Races: Race Area Charlie will be approximately 1NM East of the CYC "C" Mark

8 THE COURSES - Saturday and Sunday

8.1 The diagrams in "Illustration 2" show the courses, including the order in which marks are to be passed, and the side on which each mark is to be left.

8.2 The RC intends to set a gate at the leeward end of the course. However, a single leeward mark may be set, in which case it shall be left to port.

8.3 The approximate magnetic bearing and distance in nautical miles to the first mark will be displayed from the race committee signal boat prior to the warning signal for each race. An example is shown below:

W4	Windward/Leeward, four legs
270	Approx. magnetic bearing to weather ma
1.2	1.2 nm to weather mark

9 MARKS - Saturday and Sunday

9.1 Mark 1 shall be an **orange** inflatable tetrahedron.

9.2 Marks 2S and 2P shall be an **orange** inflatable tetrahedrons.

9.3 The starting mark shall be either an anchored vessel displaying a staff with an orange flag or a **orange** inflatable cylinder.

9.4 The finishing mark shall be an **yellow** inflatable cylinder.

9.5 New marks, as provided in instruction 11.1, and 11.2 shall be **yellow** inflatable marks.

10 THE START

10.1 The starting line shall be between a staff displaying an orange flag on the signal vessel and the course side of the mark or the staff displaying an orange flag as described in instruction 9.4.

10.2 Boats whose warning signal has not been made shall avoid the starting area during the sequence for other races. [DP][NP]

10.3 A boat that does not start within four (4) minutes of her starting signal shall be scored Did Not Start without a hearing. *This changes rules A4 and A5.*

10.4 If any part of a boat's hull, crew or equipment is on the course side of the starting line after her starting signal and she is identified, the race committee will attempt to broadcast her sail number on VHF channel for competitor communication as noted in instruction 22.4. Failure to make a broadcast, the order of sail numbers called, or to time it accurately will not be grounds for a request for redress. This changes RRS 62.1(a).

11 COURSE CHANGES

- 11.1 **Before the starting signal** - If there is a significant wind shift during a series of starting sequences, the RC may signal a change of course for a class as follows: A postponement may be signalled to allow the RC to reset the line. Flag C will be displayed from the signal vessel prior to the warning signal. The magnetic bearing of the new weather mark will be displayed and attention to the change of course will be made by multiple sound signals. The new Mark 1 will be **yellow**, but after a second change during the race, the changed mark will be **green**. Flag C will continue to be displayed to each class for which the yellow Mark 1 applies.
- 11.2 **After the starting signal** - To change the next leg, as allowed by RRS 33, the race committee will lay a new mark, move the finishing line or move the gate and remove the old mark as soon as practicable. When in a subsequent change a new mark is replaced, it will be replaced by an original mark.

12 THE FINISH

The finishing line shall be between a staff displaying a **blue** flag on the signal boat and the course side of the mark as described in instruction 9.5.

13 PENALTY SYSTEM

- 13.1 The first two sentences of RRS 44.1 are changed to: "A boat may take a One-Turn Penalty when she may have broken a rule of Part 2 or RRS 31 while *racing*. However, when she may have broken a rule of Part 2 while in the *zone* around a *mark* other than a starting *mark*, her penalty shall be a Two-Turns Penalty."

14 TIME LIMITS

- 14.1 The time limit to sail the course and finish are as follows:

<u>Race</u>	<u>Race Time Limit</u>	<u>Mark 1 Time Limit</u>
Friday Evening	2 hours	45 minutes
Saturday & Sunday, each race	2 hours	1 hour

- 14.2 If no boat of the affected class has reached the first mark within 45 minutes, the race shall be abandoned for that class only.
- 14.3 Finishing Window All Classes-Saturday and Sunday only – A boat or boats failing to finish within twenty (20) minutes after the first boat in her class sailed the course and finished, and before the time limit as specified in SI14.1, will be scored Time Limit Expired (TLE) without a hearing. *This changes RRS 35, A4.1, A5 and A11.*
- ## 15 PROTESTS AND REQUESTS FOR REDRESS
- 15.1 RRS 61.1(a) is changed so that "A boat intending to protest about an incident that occurs in the racing area shall notify the race committee finish boat of her intention as soon as possible after finishing, including the sail number of the boat(s) being protested until acknowledged by the Race Committee signal boat.
- 15.2 Protest forms are available at race headquarters Center Isle. Protests and requests for redress shall be delivered there to a Judge or the Jury Secretary at the Judges Table within the appropriate time limit.
- 15.3 For each class, the protest time limit is one (1) hour after the RC signal vessel for their course area docks after the last race of the day or the RC signals no more racing today, whichever is later.
- 15.4 Notices will be posted no later than thirty (30) minutes after the protest time limit to inform competitors of hearings in which they are parties or named as witnesses. Hearings shall be held inside the main Clubhouse, beginning at the time posted on the official notice board. All parties to Protest Meetings shall meet at the Judges Table 10 minutes prior to their scheduled meeting time; Protest Meetings that do not have all Parties present at its start shall move to the end of scheduled Protest Meetings.
- 15.5 Protests by the RC, Technical Committee (TC) or Protest Committee (PC) shall be posted to inform boats under RRS 61.1(b).
- 15.6 Protests resulting from the Friday night race will be heard after racing on Saturday.
- 15.7 On the last scheduled day of racing a request for redress based on a PC decision shall be delivered no later than thirty (30) minutes after the decision was posted. *This changes RRS 62.2.*
- 15.8 If the RC posts a list of boats scored OCS, ZFP, UFD, BFD or TLE on the official notice board before the protest time limit, a request for redress based on such a posted score shall be made no later than one (1) hour after the after the penalties are posted. *This changes RRS 62.2.*

16 SCORING

- 16.1 One (1) race is required to be completed to constitute a series.
- 16.2 Boats scored TLE in accordance with SI 14.3 will receive points equal to the number of boats in her class finishing within the Time Limit as described in SI 14.1 plus one (1) point.
- 16.3 When five (5) or more races have been completed, a boat's final series score will be the total of her race scores excluding her worst score (one throw-out). This changes RRS A2.
- 16.4 Questions regarding scoring or a boat's rating may be resolved by the proper filing of a Scoring Inquiry Form which shall be available at the Judges Table in Center Isle. If the resolution of scoring issue proves unsatisfactory, boats may request redress as available to them under RRS 62.

17 SAFETY REGULATIONS

- 17.1 **Check-In** - All boats shall check-in with the Race Committee boat displaying the "L" flag on their assigned race area at least five minutes before the first warning signal of the day. Each boat shall sail past the committee boat on starboard tack and hail her class and sail number until acknowledged by the Race Committee. [DP][NP]
- 17.2 **Retirement** - A boat that retires from a race shall notify the RC as soon as possible. [DP][NP]

18 EQUIPMENT AND MEASUREMENT CHECKS

On the water, a boat can be instructed by a member of the RC or TC to proceed immediately to a designated area for inspection. Ashore, equipment may be inspected at any time for compliance with the class rules, notice of race, and sailing instructions.

19 LAUNCH, HAUL-OUT RESTRICTIONS AND TRAILER STORAGE

- 19.1 All boats must be launched at least three hours before the first warning on her first day of racing. [DP]
- 19.2 Once launched, no boat shall be hauled out of the water until after the last race Sunday, except for emergencies, without prior written authorization from the RC. [DP]

20 DIVING EQUIPMENT AND PLASTIC POOLS

Underwater breathing apparatus and plastic pools, or their equivalent, shall not be used around boats between the preparatory signal of the first race and the end of the regatta [DP]

21 RADIO COMMUNICATION

- 21.1 All radio communications between the RC and the competitors shall be on the VHF channel **72**
- 21.2 Various race information, including notification of OCS boats after the start, may be provided by the RC as a courtesy to competitors. This does not in any way alter the competitor's responsibility to observe the RC's visual signals which shall govern the conduct of the racing. [NP]
- 21.3 Except in an emergency, a boat shall neither make radio transmissions while racing nor receive radio communications not available to all boats. [DP][NP]

22 PRIZES

- 22.1 First, Second, and Third prizes in each class.
- 22.2 Other prizes may be awarded at the discretion of the Organizing Authority and/or individual classes.

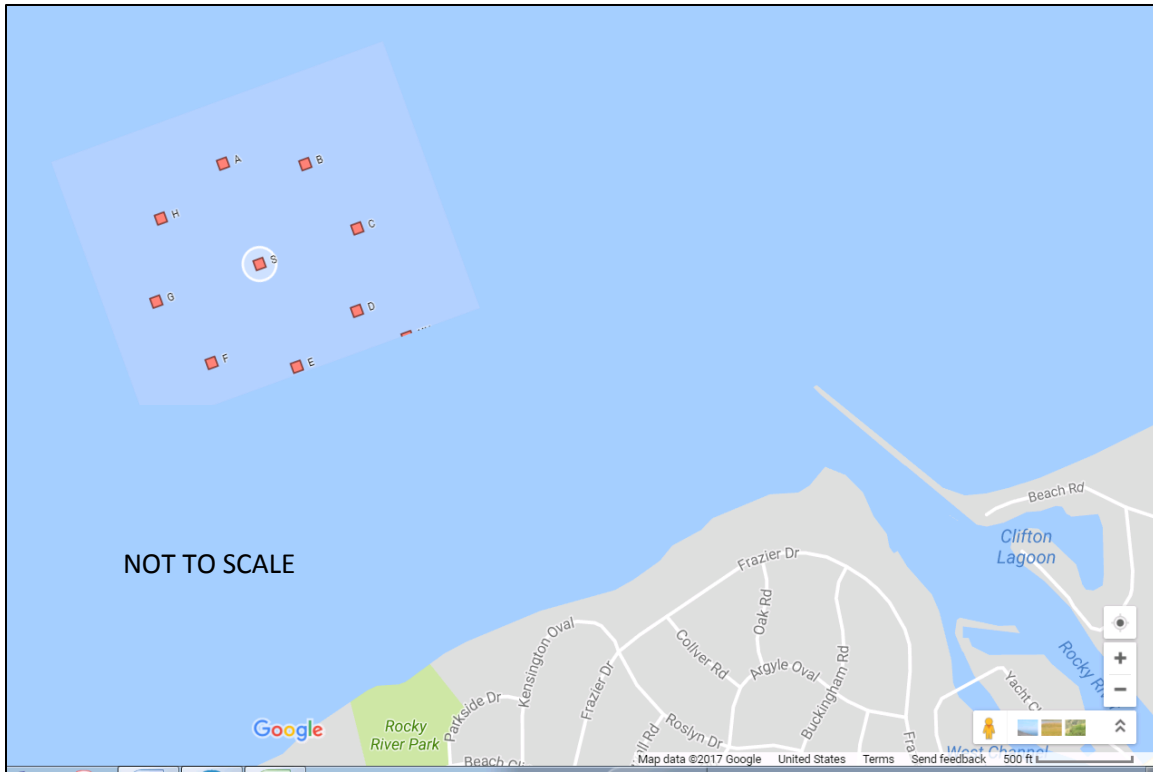
23 DISCLAIMER OF LIABILITY

Competitors participate in the regatta entirely at their own risk. See RRS 4, Decision to Race. The organizing authority shall not accept any liability for material damage or personal injury or death sustained in conjunction with or prior to, during, or after the regatta.

COURSES – ILLUSTRATION 1

Random Leg Course

Friday July 21, 2017



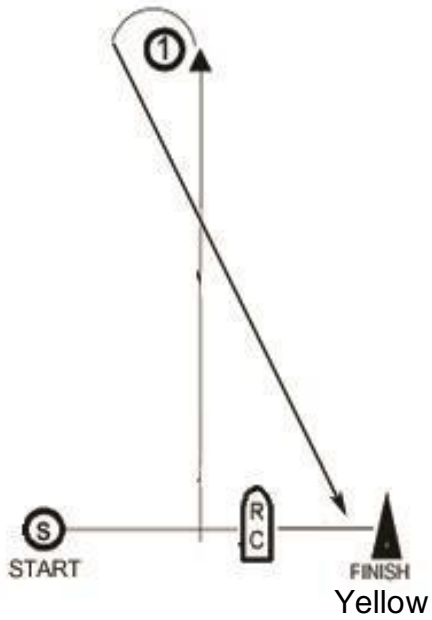
Marks to be rounded in the following order:

Mark	Approx. Bearing to Next Mark	Round to:	Distance to Next Mark
Start	Upwind		0.75Nm
Orange Tet	?	P/S (As displayed)	?
F	325	S	0.66
G	75	S	0.87
S	120	S	0.87
D	Finish	S	Finish
	Mark	Approx. Coordinates	
	F	41.30.180 N 81.51.380 W	
	G	41.30.630 N 81.52.000 W	
	S	41.30.960 N 81.50.920 W	
	D	41.30.630 N 81.49.830 W	

Orange Tet is to be rounded either to port or starboard depending on the course to the next mark. Before the start, the Race Committee will display either a RED flag (port rounding) or GREEN flag (starboard rounding) from the starboard corner of the Race Committee Signal Boat.

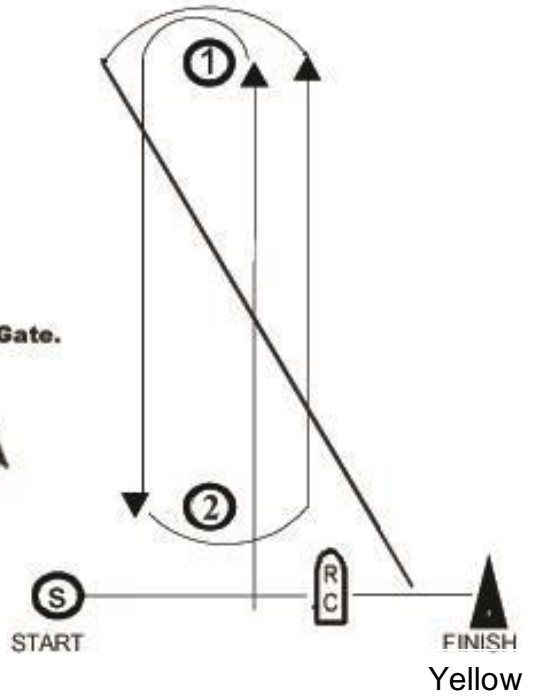
COURSES - ILLUSTRATION 2

COURSE W2



COURSE W4

MARK 2
When Used As Gate.



COURSE W5

MARK 2
When Used As Gate.

