



2017 Leukemia Cup Regatta

Organizing Authority: The Cleveland Yachting Club

July 21-23, 2017

SAILING INSTRUCTIONS - Fixed Marks Course (JAM and Cruising Class)

The notation '[DP]' in a rule in the SI means that the penalty for a breach of that rule may, at the discretion of the protest committee, be less than disqualification.

The notation '[NP]' in a rule in the SI means that instruction is not grounds for protest or a request for redress by a boat. This changes RRS 60.1.

1 RULES

- 1.1 The regatta is governed by the rules as defined in the current *Racing Rules of Sailing* (RRS).
- 1.2 US Sailing prescription to RRS 63.2 and 63.4 shall not apply.

2 NOTICES TO COMPETITORS AND INFORMATION MEETING(S)

- 2.1 Notices to competitors shall be posted on the official Notice Board located in the Center Isle.

3 CHANGES TO SAILING INSTRUCTIONS

- 3.1 Except for instructions 3.2 and 3.3 below, any change to the sailing instructions shall be posted not less than two (2) hours prior to the first scheduled race on the day it shall take effect.
- 3.2 Any change to the location of a racing area shall be posted before 0800 on the day it will apply.
- 3.3 Any change to the schedule of races will be posted by the later of 1800 or the protest time limit on the day before it will take effect.

4 SIGNALS MADE ASHORE

- 4.1 Signals made ashore shall be displayed from the flagpole located south of the CYC clubhouse.
- 4.2 When flag AP is displayed ashore, "1 minute" is replaced with "not less than 60 minutes" in race signal AP. *This changes race signals AP*
- 4.3 Since numeral pennants are used as class flags, the RRS Race Signals section "AP over a numeral pennant 1-9" is deleted in its entirety.
- 4.4 When a signal flag is posted ashore, the code flag corresponding to each course name shall be displayed to indicate which course the signal is designated for. If no course designator is posted, the signal shall be for all courses.




5 SCHEDULE OF RACES

- 5.1 A total of five (5) races are scheduled for JAM Classes and three (3) raced scheduled for the cruising class.

Race	Type	Day/Date	First Warning
Random Leg Race	Fixed and Drop Marks	Friday, July 21	6:55 PM
2 races JAM	Fixed Marks	Saturday, July 22	9:55 AM
2 races JAM	Fixed Marks	Sunday, July 23	9:55 AM

- 5.2 One (1) race is scheduled Friday.
- 5.3 A single race is scheduled Saturday and Sunday for the Cruising class and back-to-back races are scheduled Saturday and Sunday for JAM Classes.
- 5.4 If a race is abandoned or postponed it may be sailed on the following day up to one extra race per day.
- 5.5 Second and subsequent races for each class/division will start shortly after last finisher of that class' preceding race.
- 5.6 After the first race of the day, the Race Committee may change the start order to facilitate the timely start of the next race. Class flags will determine the start order.
- 5.7 No warning signal will be made after 1:00 PM on the last scheduled day of racing

6 CLASS FLAGS AND INITIAL ORDER OF START (Saturday and Sunday Only)

JAM A - Code flag #5 
JAM B - Code flag #6 
Cruising Class – Code flag #7 

Classes may be combined.

7 RACING AREA

- 7.1 Random Leg Race (Friday) - The start will be between the CYC D mark and the staff flying the Orange flag on the Race Committee Signal boat at the starboard end of the line. Courses and directions will be posted on the Official Notice Board. See “Courses - Illustration 1”
- 7.2 All Saturday and Sunday Races: The General Sail Race Course includes marks ‘A’ through ‘H’ and ‘S’. (See Illustration 2). The starting area for this course is located at approximately 350° and 1.2 nautical miles from the Rocky River outer light. The racing marks are vertical marks with alternating red and white stripes capped with the letter of the mark. The Race Committee Boat will display an RC Flag.

8 THE COURSES - Saturday and Sunday

- 8.1 The diagrams in “Illustration 2” show the courses, including the order in which marks are to be passed. All marks are to be left to port. Placards will be hung from the rear of the Race Committee Boat. The top letter will designate the first mark of the course. The bottom number will designate the course to be sailed.
- 8.2 START/FINISH LINE RESTRICTION: Boats shall not cross the start/finish line except for when starting, finishing, or using ‘S’ mark as a mark of the race course (Courses 3, 5, 10, 12, 14, 20, and 21). The penalty for violation shall be disqualification.

9 THE START

- 9.1 The starting line shall be between a staff displaying an orange flag on the signal vessel and the course side of “S mark”.
- 9.2 Boats whose warning signal has not been made shall avoid the starting area during the sequence for other races. [DP][NP]
- 9.3 A boat that does not start within four (4) minutes of her starting signal shall be scored Did Not Start without a hearing. *This changes rules A4 and A5.*
- 9.4 **Cruising Class Only:** boats may start anytime within the 5 minutes (the “five minute period”) after the starting gun without penalty. The actual start and finish times will be recorded by the race committee. Any boat starting later than 5 minutes after the starting gun will be scored DNS (Did Not Start).
- 9.5 If any part of a boat’s hull, crew or equipment is on the course side of the starting line after her starting signal and she is identified, the race committee will attempt to broadcast her sail number on VHF channel for competitor communication as noted in instruction 22.4. Failure to make a broadcast, the order of sail numbers called, or to time it accurately will not be grounds for a request for redress. This changes RRS 62.1(a).

10 COURSE CHANGES

- 10.1 The Race Committee may signal a change of course in accordance with RRS Rule 33, at any rounding mark and before any boat begins the changed leg, by displaying Code Flag ‘C’, the course number (if no course number is shown the course remains as it was displayed at the start), the next mark, and the numeral pennant of the class, or classes, whose course is being changed. If there is no numeral pennant flown, the change is applicable to all classes.

10.2 The race may be shortened at any rounding mark in accordance with RRS Rule 32. In the event of a shortened course, the finish line will be between the mark to be rounded and the staff of the Race Committee Boat displaying the Code Flag 'S'. The race is shortened only for those classes whose numeral pennant is displayed. If no numeral pennants are displayed the race is shortened for all classes.

11 THE FINISH

Boats finishing shall finish between the Race Committee boat and the start/finish mark from the direction of the last mark, unless otherwise noted in changes to the Sailing Instructions.

12 PENALTY SYSTEM

12.1 The first two sentences of RRS 44.1 are changed to: "A boat may take a One-Turn Penalty when she may have broken a rule of Part 2 or RRS 31 while *racing*. However, when she may have broken a rule of Part 2 while in the *zone* around a *mark* other than a starting *mark*, her penalty shall be a Two-Turns Penalty."

13 TIME LIMITS

13.1 The time limit to sail the course and finish are as follows:

<u>Race</u>	<u>Race Time Limit</u>	<u>Mark 1 Time Limit</u>
Friday Evening	2 hours	45 minutes
Saturday & Sunday, each race	Listed in the Course Table	Listed in the Course Table

13.2 If no boat of the affected class has reached the first mark within 45 minutes, the race shall be abandoned for that class only.

13.3 Finishing Window All Classes-Saturday and Sunday only – A boat or boats failing to finish within twenty (20) minutes after the first boat in her class sailed the course and finished, and before the time limit as specified in SI14.1, will be scored Time Limit Expired (TLE) without a hearing. *This changes RRS 35, A4.1, A5 and A11.*

14 PROTESTS AND REQUESTS FOR REDRESS

14.1 RRS 61.1(a) is changed so that "A boat intending to protest about an incident that occurs in the racing area shall notify the race committee finish boat of her intention as soon as possible after finishing, including the sail number of the boat(s) being protested until acknowledged by the Race Committee signal boat.

14.2 Protest forms are available at race headquarters Center Isle. Protests and requests for redress shall be delivered there to a Judge or the Jury Secretary at the Judges Table within the appropriate time limit.

14.3 For each class, the protest time limit is one (1) hour after the RC signal vessel for their course area docks after the last race of the day or the RC signals no more racing today, whichever is later.

14.4 Notices will be posted no later than thirty (30) minutes after the protest time limit to inform competitors of hearings in which they are parties or named as witnesses. Hearings shall be held in the "Chart Room" inside the main Clubhouse, beginning at the time posted on the official notice board. All parties to Protest Meetings shall meet at the Judges Table 10 minutes prior to their scheduled meeting time; Protest Meetings that do not have all Parties present at its start shall move to the end of scheduled Protest Meetings.

14.5 Protests by the RC, Technical Committee (TC) or Protest Committee (PC) shall be posted to inform boats under RRS 61.1(b).

14.6 Protests resulting from the Friday night race will be heard after racing on Saturday.

14.7 On the last scheduled day of racing a request for redress based on a PC decision shall be delivered no later than thirty (30) minutes after the decision was posted. *This changes RRS 62.2.*

14.8 If the RC posts a list of boats scored OCS, ZFP, UFD, BFD or TLE on the official notice board before the protest time limit, a request for redress based on such a posted score shall be made no later than one (1) hour after the after the penalties are posted. *This changes RRS 62.2.*

15 SCORING

15.1 One (1) race is required to be completed to constitute a series.

15.2 Boats scored TLE in accordance with SI 13.3 will receive points equal to the number of boats in her class finishing within the Time Limit as described in SI 13.1 plus one (1) point.

15.3 When five (5) or more races have been completed, a boat's final series score will be the total of her race scores excluding her worst score (one throw-out). This changes RRS A2.

- 15.4 Questions regarding scoring or a boats rating may be resolved by the proper filing of a Scoring Inquiry Form which shall be available the Judges Table in Center Isle. If the resolution of scoring issue proves unsatisfactory, boats may request redress as available to them under RRS 62.

16 SAFETY REGULATIONS

- 16.1 **Check-In** - All boats shall check-in with the Race Committee boat displaying the "L" flag on their assigned race area at least five minutes before the first warning signal of the day. Each boat shall sail past the committee boat on starboard tack and hail her class and sail number until acknowledged by the Race Committee. [DP][NP]
- 16.2 **Retirement** - A boat that retires from a race shall notify the RC as soon as possible. [DP][NP]

17 EQUIPMENT AND MEASUREMENT CHECKS

On the water, a boat can be instructed by a member of the RC or TC to proceed immediately to a designated area for inspection. Ashore, equipment may be inspected at any time for compliance with the class rules, notice of race, and sailing instructions.

18 LAUNCH, HAUL-OUT RESRICTIONS AND TRAILER STORAGE

- 18.1 All boats must be launched at least three hours before the first warning on her first day of racing. [DP]
- 18.2 Once launched, no boat boats shall be hauled out of the water until after the last race Sunday, except for emergencies, without prior written authorization from the RC. [DP]

19 DIVING EQUIPMENT AND PLASTIC POOLS

Underwater breathing apparatus and plastic pools, or their equivalent, shall not be used around boats between the preparatory signal of the first race and the end of the regatta [DP]

20 RADIO COMMUNICATION

- 20.1 All radio communications between the RC and the competitors shall be on the VHF channel **71**
- 20.2 Various race information, including notification of OCS boats after the start, may be provided by the RC as a courtesy to competitors. This does not in any way alter the competitor's responsibility to observe the RC's visual signals which shall govern the conduct of the racing. [NP]
- 20.3 Except in an emergency, a boat shall neither make radio transmissions while racing nor receive radio communications not available to all boats. [DP][NP]

21 PRIZES

- 21.1 First, Second, and Third prizes in each class.
- 21.2 Other prizes may be awarded at the discretion of the Organizing Authority and/or individual classes.

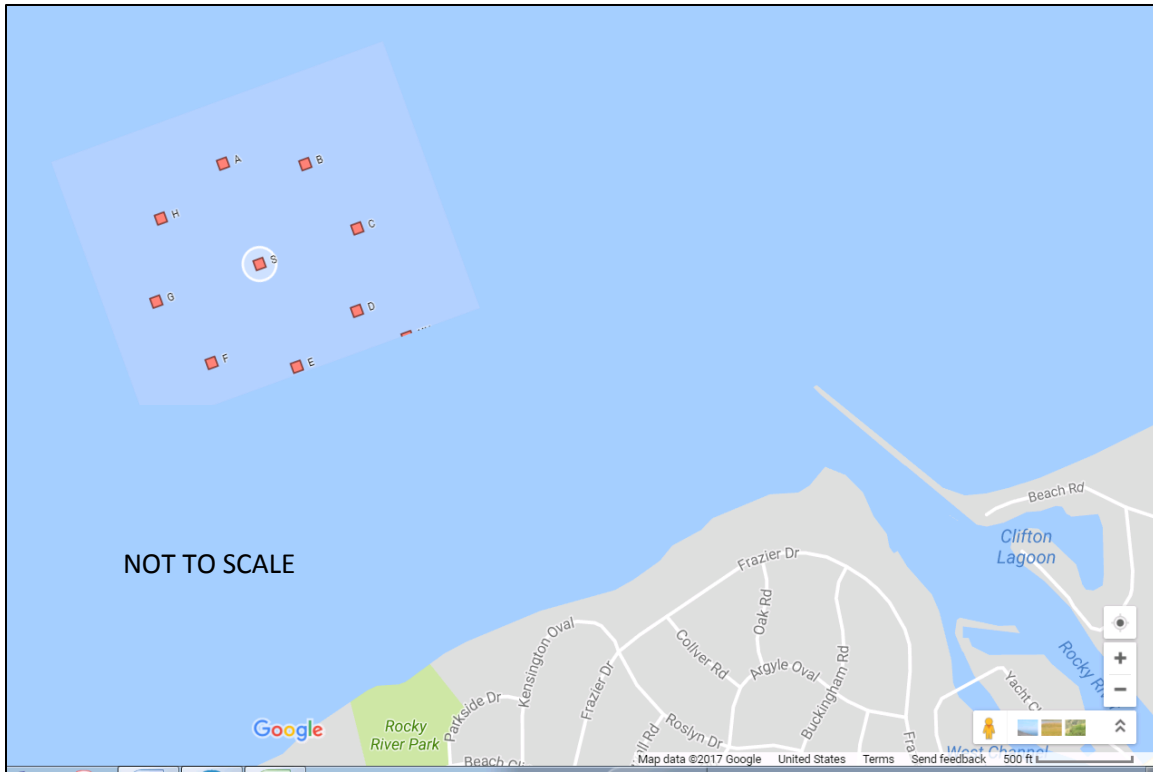
22 DISCLAIMER OF LIABILITY

Competitors participate in the regatta entirely at their own risk. See RRS 4, Decision to Race. The organizing authority shall not accept any liability for material damage or personal injury or death sustained in conjunction with or prior to, during, or after the regatta.

COURSES – ILLUSTRATION 1

Random Leg Course

Friday July 21, 2017



Marks to be rounded in the following order:

Mark	Approx. Bearing to Next Mark	Round to:	Distance to Next Mark
Start	Upwind		0.75Nm
Orange Tet	?	P/S (As displayed)	?
F	325	S	0.66
G	75	S	0.87
S	120	S	0.87
D	Finish	S	Finish
	Mark	Approx. Coordinates	
	F	41.30.180 N 81.51.380 W	
	G	41.30.630 N 81.52.000 W	
	S	41.30.960 N 81.50.920 W	
	D	41.30.630 N 81.49.830 W	

Orange Tet is to be rounded either to port or starboard depending on the course to the next mark. Before the start, the Race Committee will display either a RED flag (port rounding) or GREEN flag (starboard rounding) from the starboard corner of the Race Committee Signal Boat.

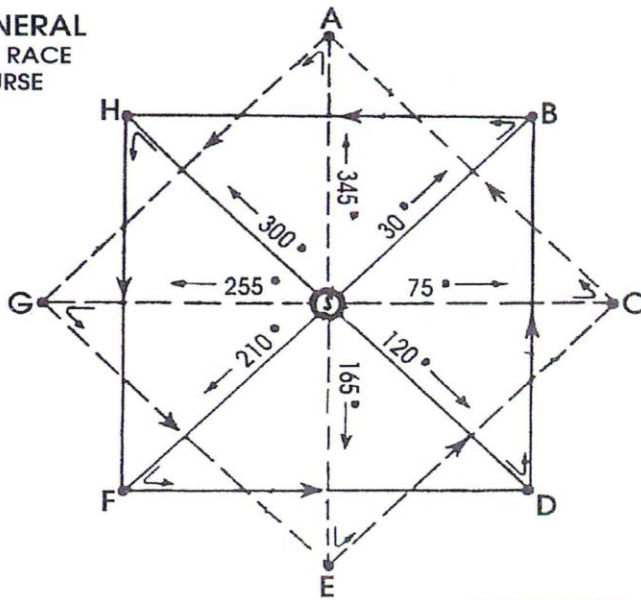
COURSES - ILLUSTRATION 2

Fixed Mark Course

Saturday and Sunday July 22-23, 2017

COURSES						COURSES					
COURSE NUMBER	1ST ROUND	2ND ROUND	3RD ROUND	NAUTICAL MILES	TIME LIMIT	COURSE NUMBER	1ST ROUND	2ND ROUND	3RD ROUND	NAUTICAL MILES	TIME LIMIT
0		None	None	1.74	2 hrs	11				8.69	4 hrs
1		None	None	3.48	3 hrs	12				9.41	4 hrs
2		None	None	4.20	3 hrs	13				9.41	4 hrs
3			None	5.21	3 hrs	14				10.13	4 hrs
4			None	5.21	3 hrs	15				10.13	4 hrs
5			None	5.94	3 hrs	16				10.43	4 hrs
6			None	5.94	3 hrs	17				11.15	4 hrs
7			None	6.95	4 hrs	18				11.87	4 hrs
8			None	7.67	4 hrs	19				12.59	4 hrs
9			None	8.39	4 hrs	20*			None	3.48	3 hrs
10				8.69	4 hrs	21*				5.21	3 hrs

**GENERAL
SAIL RACE
COURSE**



MAGNETIC COURSE

CYC Waypoints 2017

A Mark	41.31.780 N	81.51.380 W
B Mark	41.31.780 N	81.50.460 W
C Mark	41.31.300 N	81.49.830 W
D Mark	41.30.630 N	81.49.830 W
E Mark	41.30.180 N	81.50.460 W
F Mark	41.30.180 N	81.51.380 W
G Mark	41.30.630 N	81.52.000 W
H Mark	41.31.300 N	81.52.000 W
S Mark	41.30.960 N	81.50.920 W