

2017 GBCA Performance Cup Regatta

Galveston Bay

March 18th and 19th, 2017

Galveston Bay Cruising Association

1500 Marina Bay Dr. Suite 1592 Building #113B, Clear Lake Shores, TX 77565



Sailing Instructions

1 General Information

- 1.1 GBCA Performance Cup headquarters will be at the GBCA clubhouse. The address is 1500 Marina Bay Drive, Suite 1592 Building 113B, Clear Lake Shores, TX 77565. The clubhouse will be open on Friday March 17th from 1830-2000, and Sunday March 19th from the end of racing until the conclusion of prize giving. Should paperwork need to be filed with Race Committee after racing on Saturday March 18th, forms and personnel will be available at Cabo Bar and Grill as soon as practical after racing. The address is 2513 NASA Road 1, Seabrook, TX 77586.
- 1.2 Admission to socials, prize giving, and special events is open to all regatta participants and guests. There is no fee for access Cabo Bar and Grill. Drinks will be served on a cash bar basis with dinner/drink tickets for sale on-site.

2 Rules

- 2.1 The regatta will be governed by the rules as defined in The Racing Rules of Sailing 2017-2020 (RRS); the Notice of Race (NOR), and any amendments to it. In the case of a discrepancy between the NOR and these Sailing Instructions, the Sailing Instructions will prevail.
- 2.2 The current US Sailing Safety Equipment Requirements as amended for this regatta are available on the official notice board.
- 2.3 Class rules for the J/24, J/22, J/105, J/109, and Pulse 600 shall apply. Changes to class rules will be posted on the official notice board.
- 2.4 The 2017 PHRF-GB Rules shall apply for PHRF classes.

3 Notices to Competitors

- 3.1 Notices to Competitors will be posted at:
https://www.regattanetwork.com/clubmgmt/applet_club_events.php?CLUB_ID=162.

4 Changes to Sailing Instructions

- 4.1 Any change to the sailing instructions will be posted by 0900 on the day it will take effect, except that any change to the schedule of races will be posted by 2000 on the day before it will take effect.

5 Schedule of Races

- 5.1 The Competitors meeting will be 1900 hours Friday March 17th, 2017 at the GBCA clubhouse.
- 5.2 The scheduled time for the warning signal for all classes is 1100 on Saturday and Sunday.
- 5.3 Subsequent races for each class will follow as soon as possible after the end of the previous race with the intent to run as many races as possible. The Race Committee will attempt to broadcast its intentions over the designated VHF channel.
- 5.4 The class starting order for the *first* race and the class flags are shown in Appendix A.

6 Classes, Class Flags, and Sail Numbers

- 6.1 Boats will be separated into two divisions and individual classes within each division. A list of boats by division and class will be posted on Regatta Network.
- 6.2 Warning signals will be solid colors or class flags, if available.
- 6.3 All boats shall display sail/bow numbers which have been recorded on its entry. Should a boat have a sail/bow number that does not match its entry, it should notify Race Committee as soon as possible.

7 Racing Areas

- 7.1 The racing area will be between Seabrook Channel Marker No. 2 and the Houston Ship Channel, and between San Leon and The Bayport Ship Channel. Boats shall not enter the Houston Ship Channel or Bayport Ship Channel while *racing*. The Houston Ship Channel and The Bayport Ship Channel are designated as obstructions.
- 7.2 There will be two starting lines.
- 7.3 The Starting line for Division A will be located Southeast of Clear Creek Channel Mark 1.
- 7.4 The starting line for Division B will be located Northeast of Clear Creek Channel Mark 2.

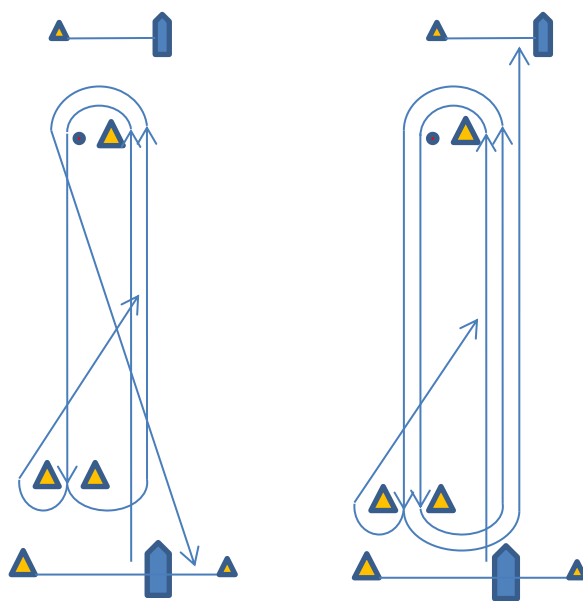
8 Check In

- 8.1 When the signal boat is on station in the planned starting area, boats are required to sail or motor by the stern of the signal boat on starboard and check in by hailing their bow or sail number.

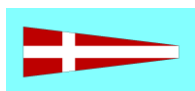
9 Courses for Windward/Leeward Classes

- 9.1 Courses will be windward/leeward. There will likely be 4 or 5 legs.
- 9.2 The windward marks are to be rounded to port.
- 9.3 The approximate heading and distance to the windward mark may be displayed on a white board on the committee boat.
- 9.4 Courses will be signaled by numeral pennants on the bow of the signal boat before the start of each class.

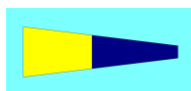
- 9.5 For all classes a leeward gate will be used. The gate will be located approximately 0.1 nm to windward of the starting line. If one of the leeward gate marks is missing, boats shall round the existing mark to port.
- 9.6 A windward offset mark shall be laid to port of the windward mark, approximately perpendicular to the course axis. The offset mark is to be rounded to port.
- 9.7 For the first leg of all courses and the last leg of a leeward finish, the leeward gate is not considered to be a mark of the course. For the last leg of a windward finish, the windward mark is not considered to be a mark of the course. This does not apply in the case of a shortened course where these marks are used as the finish line.
- 9.8 Windward/Leeward Course Diagrams



Course 4



Course 5



10 Courses for Distance Classes

- 10.1 PHRF Spin Distance and GBCA Cruising Club will sail distance courses, starting and finishing at the Division A signal boat.
- 10.2 Distance courses will be signaled by numerical pennants (10-13), correlating with the course diagrams and mark rounding directions in Appendix B. Fixed mark courses will use marks "E", "H" and/or "M52". Approximate coordinates and description of the marks are:

Mark	Approximate Coordinate	Description
Start/Finish	N 29° 32.567' W 094° 59.545'	Start: Start line described in 8.1 Finish: Finish line described in 11.1c
E	N 29° 35.787' W 094° 56.935'	The Low Range Marker (Upper Range "A") in Galveston Bay. The mark is an orange and white structure near Houston Ship Channel Marker #73, 0.23 nm NNW of the old low range.
H	N 29° 33.255' W 094° 56.542'	A platform located in Galveston bay, approximately 1.3 nm WSW of the Houston Ship Channel marker #65.
M54	N 29° 30.814' W 094° 54.963'	Galveston Shellfish Harvesting Boundary Marker
Todville Rd beach Tet	N 29° 34.500' W 094° 59.300'	A dropped anchored 4' Tetrahedron
San Leon beach Tet	N 29° 31.570' W 094° 57.400'	A dropped anchored 4' Tetrahedron

10.3 In the event any of the marks listed are missing, boats will round the coordinates of the mark.

10.4 The signal boat will display the course to be sailed no later than the warning signal.

10.5 The race committee will attempt to broadcast course information over the designated VHF channel.

11 Marks

- 11.1 For distance races, marks will be a combination of inflatables, government marks, or existing structures in Galveston Bay.
- 11.2 Marks will be orange and yellow tetrahedrons for the Windward/Leeward courses. The original course weather marks will be Yellow. Change of course weather marks will alternate between orange and yellow. Gates will be yellow or orange. Starting and finishing marks will be orange or yellow tetrahedrons, offset marks may be orange, yellow or red tetrahedrons or spheres.

12 The Start

- 12.1 The timing of the warning signal for classes following the first start may vary. The race committee will attempt to broadcast its intentions over the designated VHF channel.
- 12.2 The starting line will be between a staff displaying an orange flag on the signal boat on the starboard end of the line and the course side of an inflatable mark on the port end of the line.
- 12.3 The Race Committee may trail a float and line astern of the Race Committee boat which shall be considered as part of the committee boat.
- 12.4 Boats whose preparatory signal has not been made shall keep clear of the starting area and of all boats whose preparatory signal has been made.
- 12.5 All divisions will follow procedures for a standard five minute starting sequence per RRS 26.

13 Recalls

- 13.1 The race committee will attempt to identify recalled boats on the designated VHF channel. Failure of a boat to see or hear her recall notification and the timing and order of such hails will not be grounds for redress.
- 13.2 For those classes with bow numbers, the race committee will attempt to hail each boat by her bow number, but may call a boat's sail number.
- 13.3 Any class subjected to a General Recall may be restarted after the last scheduled start for that race. This modifies RRS 29.2.

14 Change of Course

- 14.1 If the Race Committee displays the "C" code flag with one or more class flags, the course change applies only to those classes. If the "C" code flag is flown alone, all classes will sail the changed course. Note that the offset marks may not be in place in the event of a course change. This modifies RRS 33.
- 14.2 If the change is for a leeward leg, the original gate marks will be moved into the new position.
- 14.3 If the Race Committee displays the "S" code flag with one or more class flags, the shortened course applies only to those classes. If the "S" code flag is flown alone, all classes will sail the shortened course. This modifies RRS 32.

15 The Finish

- 15.1 Windward/Leeward courses: For downwind finishes, the finishing line will be on the opposite side of signal boat from the starting line. The finishing line will be between a staff displaying a blue flag on the finishing line boat on the starboard end of the line and a nearby inflatable mark on the port end of the line.
- 15.2 For windward finishes, the finishing line will be between a staff displaying a blue flag on the finishing line boat on the starboard end of the line and a nearby inflatable mark on the port end of the line. The finishing line will be located approximately 0.1 nm beyond the windward mark.
- 15.3 Distance Courses: The finishing line will be between a staff displaying a blue flag on the signal boat on the starboard end of the line and a nearby inflatable mark on the port end of the line.

16 Time Limit

- 16.1 The time limit for Windward/Leeward courses, shall be ninety minutes after the start of the race or thirty minutes after the first boat properly sails the course and finishes, whichever is longer.
- 16.2 Boats exceeding the time limit will be scored Did Not Finish. This modifies RRS 35.
- 16.3 There shall be no time limit for distance courses.

17 Penalty Systems

- 17.1 For all classes, unless class rules prescribe otherwise, RRS Appendix V, Alternative Penalties will apply.

18 Safety

- 18.1 A boat that retires from a race prior to finishing shall notify the Race Committee as soon as practicable on the appropriate VHF channel. Please state the boat's name, sail number and class and the fact that the boat has retired.
- 18.2 Attention is called to RRS 4: Decision to Race, "The responsibility for a boat's decision to participate in a race or to continue *racing* is hers alone."
- 18.3 Boats shall comply with the Safety Requirements described in the NOR and posted on the official notice board. In the event that class rules for an eligible one-design class conflict with the safety requirements for this event, then the class rules will take precedence.

19 Protests

- 19.1 Protests shall be communicated to the Race Committee by the appropriate VHF Channel or by hailing the Race Committee before leaving the race area.
- 19.2 The protest time limit is 2 hours after the signal boat docks on the day of the protest. This modifies RRS 61.3.

20 Arbitration

20.1 RRS Appendix T Arbitration will apply.

21 Scoring

21.1 The Low Point system, RRS Appendix A will apply. One race constitutes a series.
There will be no throw-outs. This modifies RRS A2

22 Communication

22.1 Radio communication for Division A will be conducted on VHF channel 69.

22.2 Radio communication for Division B will be conducted on VHF channel 71

22.3 The Race Committee will attempt to monitor and may make courtesy announcements on the designated VHF channel for that line. The failure of the Race Committee to make announcements or the manner in which announcements are made will not be grounds for redress. This modifies RRS 62.1(a).

22.4 If a weather-related postponement is required it will be announced at 0930 on VHF Channel 69 for Division A and VHF channel 71 for Division B.

23 Equipment and Measurement Checks

23.1 A boat or equipment may be inspected at any time for compliance with class rules, Safety Requirements, or the sailing instructions.

24 Prizes

24.1 Trophies for the regatta will be awarded on Sunday March 19th after the conclusion of racing. The number of awards will follow the guidelines from the Notice of Race.

Addendum to Sailing Instructions

For the J/24 Fleet

The Sailing Instructions for the J/24 Class shall be amended as follows. Where there is conflict between the Sailing Instructions and this addendum, this addendum shall govern.

Rules

This regatta is also governed by the Notice of Circuit for the 2017 J/24 Texas Circuit and the current International J/24 Class Rules.

All yachts must have a current, valid Measurement Certificate per Class Rule A.11.1. Any yacht without a valid Measurement Certificate may race with the prior approval of the District 14 Governor. This changes Class Rule A.11.2.

All yachts must carry aboard while racing the yacht's current measurement certificate (unless waived) and completed *Inventory of Required and Optional Equipment* per Class Rule B.3. The *Inventory of Required and Optional Equipment* is the sole responsibility of each owner or helmsperson and does not require a class measurer to complete.

RRS 42.3(b) and (c) are replaced as follows:

C.1.1(a) states that RRS 42.3(b) is modified by adding "A boat's crew shall not hang on the mast or shrouds to promote roll tacking or gybing."

C.1.1(b) states that RRS 42.3(c) is modified to allow all parts of the mainsheet to be pulled simultaneously when this rule applies.

Schedule of Races

A maximum of Six (6) races shall be sailed. A maximum of six (6) races shall be sailed. If three (3) or more races are completed on Saturday, then there can be as many as two (2) races on Sunday. If two (2) or less races are completed on Saturday, then there can be as many as three (3) races on Sunday.

Scoring

A minimum of three (3) races must be completed for this event to be considered a regatta for purposes of scoring in the overall 2017 J/24 Texas Circuit series.

No race scores will be excluded. This modifies RRS A2.

Penalty System

The 20% Scoring Penalty as provided in RRS 44.3, as modified herein, will apply to boats that may have broken one or more rules of Part 2. The One-turn as provided in RRS 44.1 will apply to boats that may have broken RRS 31.

RRS 44.3(a) is modified such that the boat taking a Scoring Penalty shall conspicuously display a yellow flag (Code Flag I acceptable), and the flag shall have a hoist of at least than 150mm and a fly of at least than 200mm and shall be flown from a leg of the backstay adjuster above the deck.

RRS 44.3(c) is modified as follows: The race score for a boat that takes a Scoring Penalty shall be the score she would have received without that penalty, made worse by the penalty number. The penalty number shall be calculated by applying 20% against the number of boats competing and rounding to the nearest whole number

(rounding 0.5 upward). However, she shall not be scored worse than Did Not Finish. The scores of other boats shall not be changed by application of these penalties; therefore, two boats may receive the same score.

After-Race Scoring Penalty – A boat that may have broken a rule of Part 2 or RRS 31 while racing may take a penalty after racing and prior to the start of a protest hearing involving the incident. Her penalty shall be a Scoring Penalty of 40% calculated as described in RRS 44.3(c) as modified herein. However, rules 44.1(a) and 44.1(b) shall apply.

A boat accepting a 20% or After-Race Scoring Penalty shall deliver to a member of the protest committee, prior to the beginning of a hearing, a written statement by completing a “Scoring Penalty Acceptance Form” that identifies the race number and where the incident occurred.

Haul-Out Restrictions

Boats shall not be hauled out during the regatta except with prior written permission of the protest committee. However, in the case of emergency, permission may be granted retroactively.

Diving Equipment, Plastic Pools and Careening Restrictions

Underwater breathing apparatus and plastic pools or their equivalent shall not be used around boats between the time they are launched and the end of the regatta.

Careening by any means for the purposes of cleaning or inspecting the hull is prohibited.

The hull may be cleaned by swimming or keelhauling using ropes or cloth.

Crew Substitution or Sail Replacement

All crews must consist of at least three (3) persons with weight not exceeding 400 kg (882 lbs). All competitors will be weighed during registration and the crew shall remain the same for all races. Any crew substitution requires written permission of the District 14 Governor or designated Texas Circuit Representative, which will be given only in exceptional cases.

Pursuant to Class Rule A.10.2.(b), damaged sails may be replaced with the authorization of the District 14 Governor or designated Texas Circuit Representative. Requests for sail replacement shall be made to the District 14 Governor designated Texas Circuit Representative at the first reasonable opportunity. Replacement sails shall comply with IJCA Class Rules.

Any yacht whose sail number does not match their hull number may race in the regatta upon prior approval of the race officials by posting a request on the Official Notice Board.

Any replies to crew substitution or sail replacement shall be posted on the Official Notice Board.

Equipment and Measurement Checks

A boat or equipment may be inspected at any time for compliance with IJCA Class Rules and Sailing Instructions.

Appendix A
2017 Performance Cup Regatta
& J/24 Circuit Stop
First Race Starting Order / Class Flags

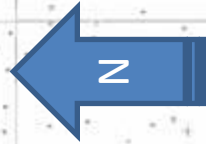
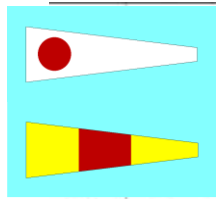
Division A (South of Clear Creek channel)

Fleet	Flag
Pulse 600	Yellow
Cruising Club (Distance)	Green
J/105	J105 (blue on yellow)
PHRF Spin (Distance)	Purple

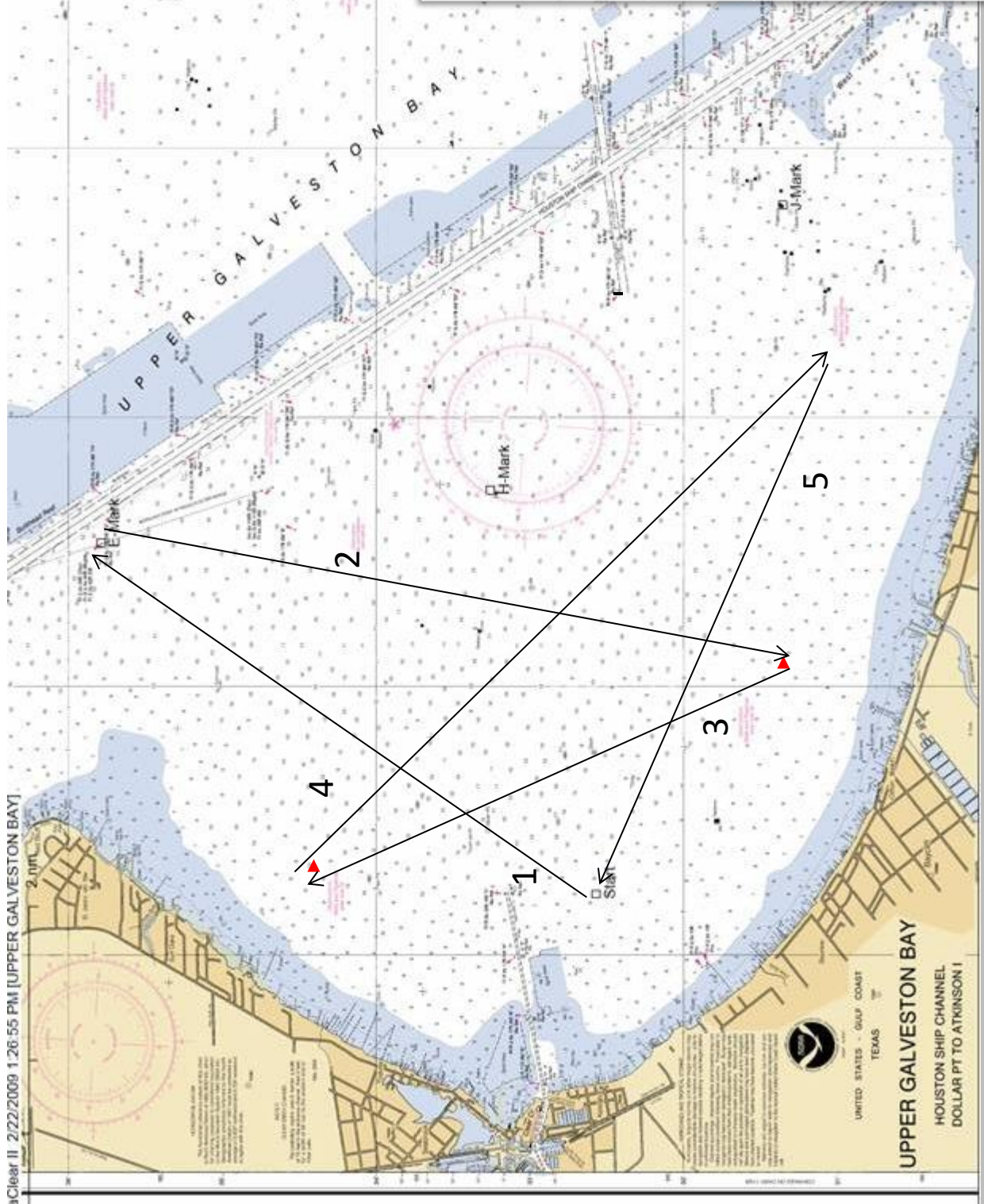
Division B (North of Clear Creek channel)

Fleet	Flag
J/24	J/24 (blue on white)
J/22	Pink

Appendix B - Course 10

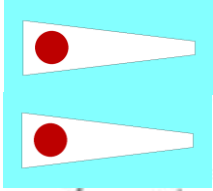


Mark	Bearing	Distance	Rounding
Start > E	031	3.95	S
E > San Leon Tet	182	4.24	S
San Leon Tet > Todville Tet	327	3.37	S
Todville Tet > M54	130	5.28	S
M54 > Finish	290	4.36	
Total		21.2	

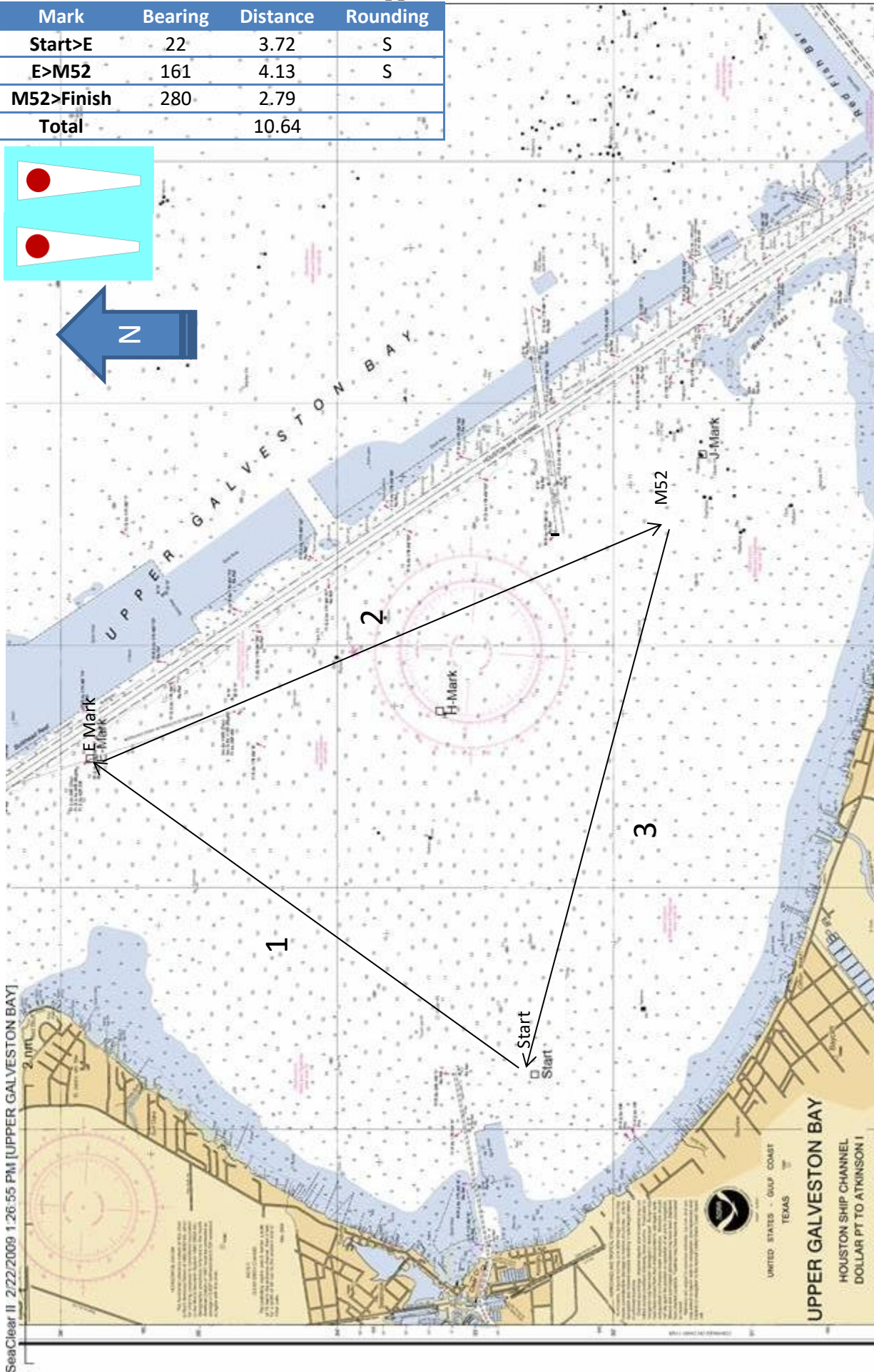


Appendix B - Course 11

Mark	Bearing	Distance	Rounding
Start>E	22	3.72	S
E>M52	161	4.13	S
M52>Finish	280	2.79	
Total		10.64	

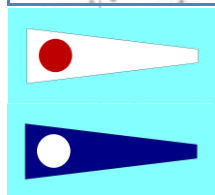


SeaClear II 2/22/2009 1:26:55 PM [UPPER GALVESTON BAY]

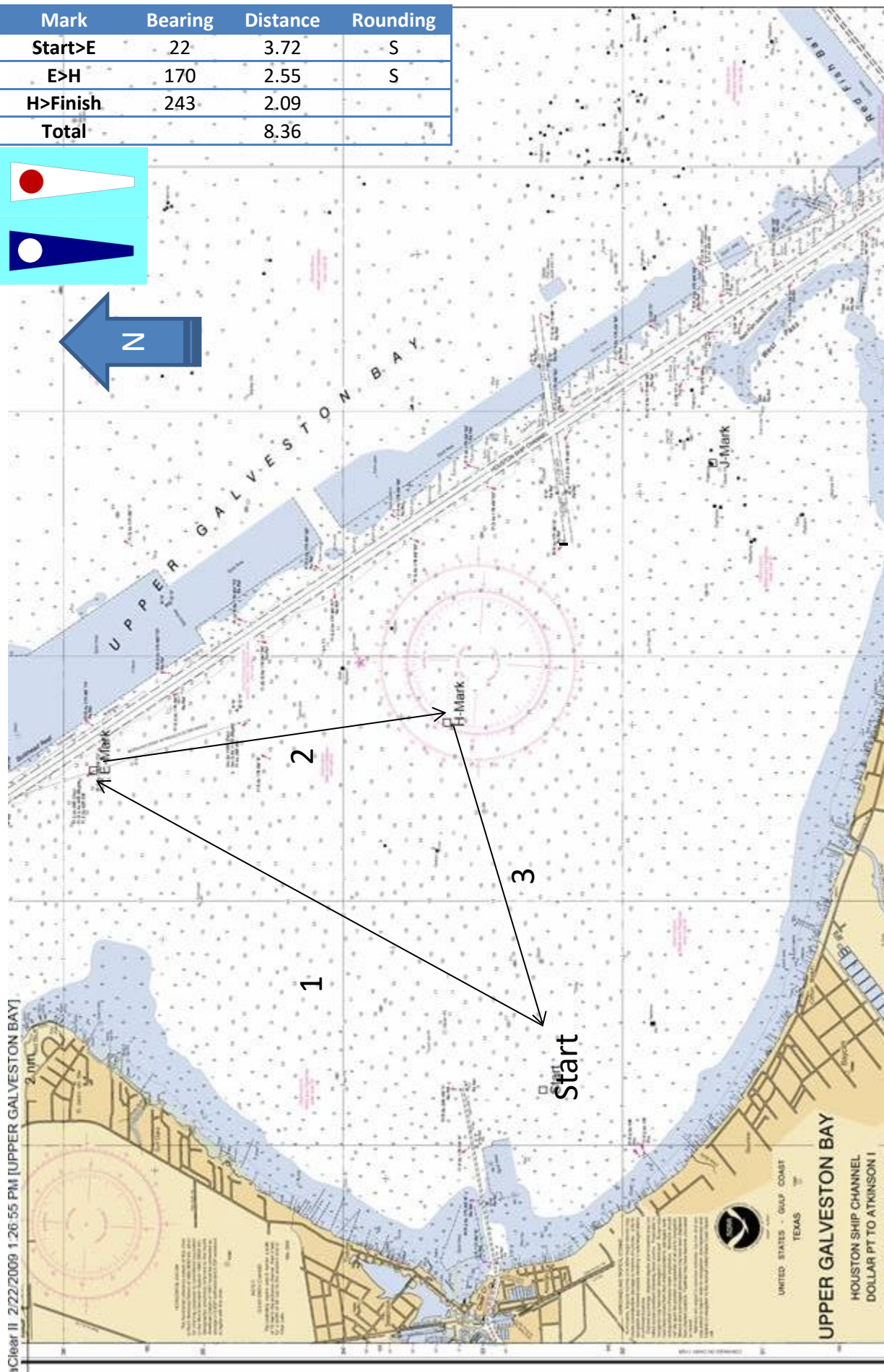


Appendix B - Course 12

Mark	Bearing	Distance	Rounding
Start>E	22	3.72	S
E>H	170	2.55	S
H>Finish	243	2.09	
Total		8.36	

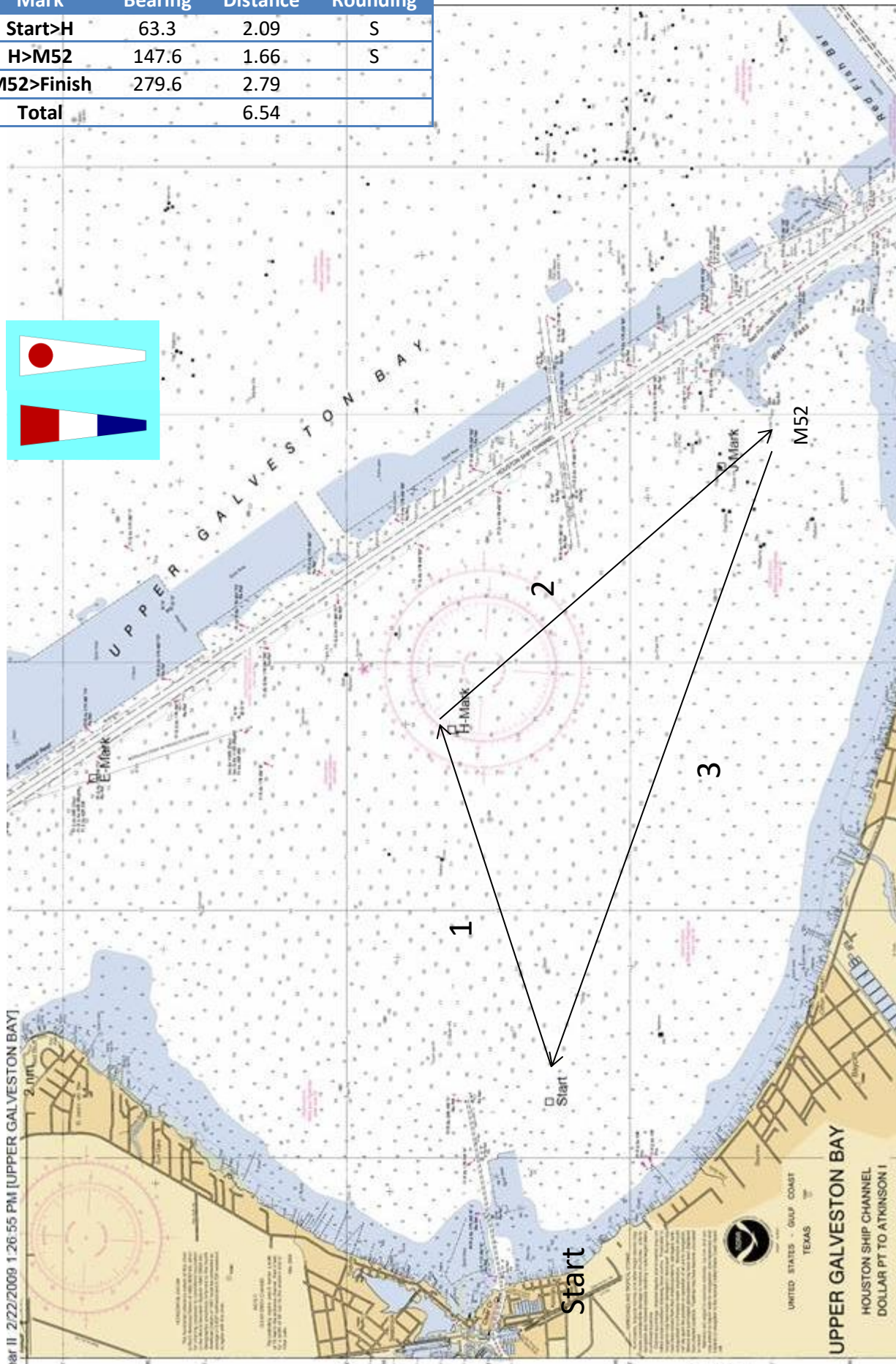
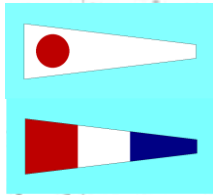


Clear II 2/22/2009 1:26:55 PM [UPPER GALVESTON BAY]

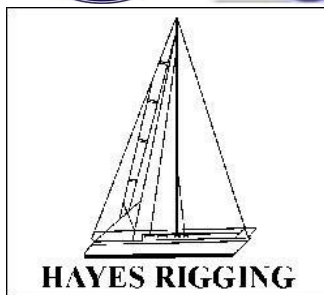


Appendix B - Course 13

Mark	Bearing	Distance	Rounding
Start>H	63.3	2.09	S
H>M52	147.6	1.66	S
M52>Finish	279.6	2.79	
Total		6.54	



Thanks to all our Sponsors!



threefatbrothers.com