



**J/105 North American Championship**  
**Lakewood Yacht Club Seabrook, Texas**  
**October 25-29 2017**

**Hosted by Lakewood Yacht Club**  
**Organizing Authority: Bay Access and J/105 Class Association**

## **Sailing Instructions**

### **1 RULES**

- 1.1 The regatta will be governed by rules as defined in *The Racing Rules of Sailing*.. As per the definition of rule (d) the U.S. J/105 Class Association Rules (CR) will apply.
- 1.2 The Equipment Rules of Sailing will apply except for Section B of the ERS.
- 1.3 The Protest Committee may impose suitable penalties, other than disqualification, for violations of Class rules other than CR 7.2, 7.5, 7.6, or 7.9, or other non-part 2 rules of the RRS, this changes RRS 64.1(a).
- 1.4 If there is a conflict between languages the English text will take precedence.

### **2 NOTICES TO COMPETITORS**

- 2.1 Notices to competitors will be posted on the official notice board, which will be the glass windows on both sides of the south poolside foyer entrance at LYC.

### **3 CHANGES TO THE SAILING INSTRUCTIONS**

- 3.1 Any change to the sailing instructions will be posted before 0915 on the day it will take effect, except that any change to the schedule of races will be posted by 1800 on the day before it will take effect.

## 4 SIGNALS MADE ASHORE

- 4.1 Signals made ashore will be displayed at the LYC inter harbor flag pole.
- 4.2 When flag AP is displayed ashore, '1 minute' is replaced with 'not less than 60 minutes' in race signal AP. This changes RRS race signals.
- 4.3 Flag B (BRAVO) hoisted with one sound signal means 60 minutes before the end of the protest time limit. When lowered with one sound means "Protest time has ended". This changes RRS race signals.

## 5 SCHEDULE OF RACES

### 5.1

Day	Date	Event	Time
Wed	Oct 25	Registration/check-in (LYC Club House) Competitors Meeting (LYC Ballroom) All boats afloat	1200-1700 1800 1800
Thurs	Oct 26	Late crew weigh-in (LYC Club House) Competitors Briefing First Warning Signal Dock party at L dock	0800-0930 0900 1100 After racing
Fri	Oct 27	Competitors Briefing First Warning Signal Dock party at L dock	0900 1100 After racing
Sat	Oct 28	Competitors Briefing First Warning Signal Dinner (ballroom) Party in Lounge	0900 1100 1800 After dinner
Sun	Oct 29	Competitors Briefing First Warning Signal Awards in Lounge	0900 1100 After racing

- 5.2 11 races are scheduled.
- 5.3 On the last scheduled day of racing, no warning signal will be made after 1400.

## 6 CLASS FLAGS

- 6.1 The Class Flag will be the J/105 logo on a Pink background.

## 7 RACING AREA

7.1 Attachment 1 shows the location of the racing area.

## 8 THE COURSES

8.1 The diagrams in Attachment 2 are examples of the courses, including the approximate angles between legs, the order in which marks are to be passed, and the side on which each mark is to be left.

8.2 The course number (via a numeral pennant) indicates the number of legs to be sailed (windward mark to the offset mark is not a leg of the course for this purpose). Odd number courses will finish to windward, even numbered courses will finish to leeward.

8.3 No later than the warning signal, the approximate compass bearing and approximate distance to the first mark and the course pattern will be displayed on a white board on the RC signal vessel.

## 9 MARKS

9.1

	<b>Original Marks</b>	<b>New Marks</b>
Mark 1	Orange Inflatable 8' tet	Yellow Inflatable 8' tet
Mark 1A	Orange buoy	Orange buoy
GATE (2P/2S)	Orange Inflatable 4' tet	Orange Inflatable 4' tet
Start	RC vessel or Orange buoy	RC vessel or Orange buoy
Finish	RC vessel or Orange buoy	RC vessel or Orange buoy

9.2 A race committee vessel signaling a change of a leg of the course is a mark as provided in SI 12.2.

## 10 AREAS THAT ARE OBSTRUCTIONS

10.1 The following areas are designated as obstructions: Houston Ship Channel

## 11 THE START

11.1 Races will be started by using RRS 26.

- 11.2 The starting line will be between the staffs displaying an orange flag on the starboard end signal vessel and the port end starting mark vessel. In the event that the port end mark vessel is not on station, it will be replaced by an inflatable orange mark. The course side of the inflatable mark will define the line.
- 11.3 A boat that does not start within 5 minutes after starting signal will be scored Did Not Start without a hearing. This changes RRS A4 and A5.

## 12 **CHANGE OF THE NEXT LEG OF THE COURSE**

- 12.1 To change the next leg of the course, the race committee will lay a new mark (or move the finishing line) and remove the original mark as soon as practicable. When in a subsequent change a new mark is replaced, it will be replaced by an original mark.
- 12.2 Except at a gate, boats shall pass between the race committee vessel signaling the change of the next leg and the nearby mark, leaving the mark to port and the race committee vessel to starboard. This changes RRS 28.

## 13 **THE FINISH**

- 13.1 For downwind finishes, the finish will be between a staff displaying an orange flag on a RC vessel and a staff displaying an orange flag on a nearby RC vessel or a nearby orange mark. The finishing line will be located to leeward of the leeward gate.
- 13.2 For windward finishes, the finishing line will be between a staff displaying an orange flag on a RC vessel and a staff displaying an orange flag on a nearby RC vessel or a nearby orange mark. The finishing line will be located to windward of the windward mark.
- 13.3 If the RC intends to start another race on the same day, it will display the flag “R” (ROMEIO) with no sound whilst boats are finishing.
- 13.4 Flag “A” (ALPHA) displayed with no sound whilst boats are finishing means “no more racing today”.

## 14 **PENALTY SYSTEM**

- 14.1. A fundamental principle of sportsmanship is that when competitors break a rule they will promptly take a penalty, which may be to retire.

14.2 Under RRS 87 rule CR 7.7 is changed as follows: A yacht that has been protested for infringing class rule 7.2, 7.5, 7.6 or 7.9 may exonerate herself by taking a turns penalty or a scoring penalty in accordance with SI 14.3 OR SI 14.4.

14.3. RRS 44.1 is changed to read:

A boat may take One-Turn Penalty when she may have broken one or more rules of Part 2 or rule 31 in an incident while racing. However, when she may have broken one or more rules of Part 2 while in the zone around a mark other than a starting mark, her penalty shall be a Two-Turns Penalty.

However, (a) when a boat may have broken a rule of Part 2 and rule 31 in the same incident she need not take the penalty for breaking rule 31; (b) if the boat caused injury or serious damage or, despite taking a penalty, gained a significant advantage in the race or series by her breach her penalty shall be to retire.

A boat that has done penalty turns shall complete an acknowledgement form at the protest committee desk within the protest time limit.

14.4. Alternatively, a boat may accept a Scoring Penalty as described in RRS 44.3. The Scoring Penalty shall be 20% of the boats entered unless the incident occurs within the zone of any mark, in which case the Scoring Penalty shall be 30% of the boats entered. Boats accepting a scoring penalty shall also inform the race committee if the penalty is 20% or 30% in addition to the other requirements of reporting to the RC per RRS 44.3. This changes RRS 44.3 and T1. RRS 44.1 (a) and (b) will apply.

14.5 **PENALTY TAKEN AFTER A RACE**

After a race, a boat that may have broken one or more rules of Part 2, rule 31, or (CR 7.2, 7.5, 7.6, 7.9) in an incident while racing may take a Post-Race Penalty for that incident. A boat takes the penalty by delivering a written notice to the race office that identifies the race number and when and where the incident occurred. The penalty shall be a 40% Scoring Penalty, calculated as stated in rule 44.3(c). However, rules 44.1(a) and (b) apply, and the penalty shall not be taken after a protest hearing involving the incident has begun.

15 **TIME LIMITS**

15.1 Any race in which no boat rounds the first windward mark within 35 minutes after its start will be abandoned.

15.2 Boats failing to finish within 20 minutes after the first boat sails the course and finishes will be scored TLE without a hearing. This changes RRS 35, A4, and A5.

## 16 **PROTESTS AND REQUESTS FOR REDRESS**

- 16.1 RRS Appendix T2 Arbitration Meeting, T3 Arbitrator's Opinion, and T4 Arbitration Meeting Outcomes will apply.
- 16.2 Protest forms are available at the protest committee desk located in the LYC foyer. Protests and requests for redress or reopening shall be delivered there within the appropriate time limit.
- 16.3 The protest time limit is 60 minutes after flag B (BRAVO) is displayed ashore. This flag will be hoisted as soon as practical as the boats return to harbor. This changes RRS 61.3.
- 16.4 Notices will be posted no later than 30 minutes after the protest time limit to inform competitors of hearings in which they are parties or named as witnesses. Hearings will be held in the protest room, located at Lakewood Yacht Club, beginning at the time posted.
- 16.5 Notices of protests by the race committee, technical committee or protest committee will be posted to inform boats under RRS 61.1 (b).
- 16.6 Breaches of SI's 18, 21, 23, 25, 26, 27 and 31 will not be grounds for a protest by a boat. This changes RRS 60.1(a).
- 16.7 On the last scheduled day of racing a request to redress based on a protest committee decision shall be delivered no later than 30 minutes after the decision was posted. This changes RRS 62.2.
- 16.7 For the purpose of meeting obligations under US Sailing prescriptions concerning redress, notification of a redress hearing shall be by posting on the official notice board for thirty minutes. The requirement for written requests for attendance of the hearing will be satisfied by a signup sheet at the official protest table. No more than one person per boat may attend. No request for reopening a hearing will be accepted after 1800 Sunday, 10/29/2017. This changes RRs 63.2.

## 17 **SCORING**

- 17.1 Each boat's series score will be the total of her race scores without exclusion. This modifies Appendix A2.
- 17.2 Eleven races are scheduled. Three races must be completed to constitute a series.
- 17.3 Boats scored TLE (Time Limit Expired) will receive two points more than the number of finishers but will not be scored worse than DNF.

- 17.4 Scoring inquiry forms are available at the protest committee desk. Scoring inquiries shall be filed by 0730 hrs on the day following the race in question or 30 mins after the posting of the preliminary results for that race, whichever is later, except for the last day of racing. For races held the last day of racing, scoring inquires must be filed within the protest time limit or 30 minutes after the provisional final results are posted, whichever is later.

## **18 SAFETY REGULATIONS**

- 18.1 Prior to the first warning signal of her first race of each day, each boat is required to check in by passing the stern of the race committee vessel on starboard tack and hail her sail or bow number until acknowledged by the race committee. Failure to check in shall result in a 20% scoring penalty without hearing. This changes RRS 63.1 and A5.
- 18.2 Boats retiring from a race or leaving or returning the racing area shall inform the race committee on VHF 72 as soon as possible.

## **19 REPLACEMENT OF CREW OR EQUIPMENT**

- 19.1 Substitution of competitors will be allowed only with written approval of the race committee and in compliance with J/105 Class Rules.
- 19.2 Substitution of damaged or lost equipment will be allowed only with written approval of the race committee and in compliance with J/105 Class Rules.

## **20 EQUIPMENT AND MEASUREMENT CHECKS**

- 20.1 On the water, a boat can be instructed by a member of the race committee or technical committee to proceed immediately to a designated area for inspection. Ashore, equipment may be inspected or measured at times specified in class rules, the notice of race and at the discretion of the race committee or technical committee.

## **21 EVENT ADVERTISING**

- 21.1 Subject to WS (World Sailing) Regulation 20, Advertising Code, boats may be required to display advertising supplied by the OA. If this rule is broken, WS regulation 20.9 applies.

## **22 OFFICIAL VESSELS**

- 22.1 Race committee vessels will display a blue “RC” flag. Judge vessels will display a US Sailing Judge flag.

## **23 SUPPORT VESSELS**

- 23.1 Coaches and other support vessels shall comply with any reasonable request from a regatta official.
- 23.2 Coaches and other support vessels shall stay outside areas where boats are racing from the time of the preparatory signal until all boats have finished or retired or the race committee signals a postponement, general recall or abandonment.
- 23.3 Support vessels shall comply with CR 7.10.

## **24 TRASH DISPOSAL**

- 24.1 See RRS 55.

## **25 HAUL-OUT RESTRICTIONS**

- 25.1 Boats shall not be hauled out during the regatta except with and according to the terms of prior written permission of the race committee. However, in the case of an emergency, permission may be granted retroactively.
- 25.2 All boats shall be in the water by 1800 on October 25, 2017 and shall remain in the water through the end of the regatta, subject to the provisions of SI 25.1.

## **26 DIVING EQUIPMENT AND PLASTIC POOLS**

- 26.1 Underwater breathing apparatus and plastic pools or their equivalent shall not be used around boats between the preparatory signal of the first race of the regatta and the end of the regatta.

## **27 RADIO COMMUNICATION**

- 27.1 Except in an emergency, a boat that is racing shall not make voice or data transmissions and not receive voice or data communication that is not available to all boats.
- 27.2 Race Committee will communicate with competitors on VHF Channel 72.
- 27.3 The race committee intends to use VHF radio to broadcast courtesy information to competitors, including OCS hails and other race information. Failure to broadcast or failure of a boat to hear broadcasts shall not be grounds for granting redress. This changes RRS 62.



28 **PRIZES**

28.1 Prizes will be awarded to the skipper of the series' first through fifth place finishers overall. Daily prizes may also be awarded. Additional prizes may be awarded at the discretion of the OA.

29 **DISCLAIMER OF LIABILITY**

29.1 Competitors participate in the regatta entirely at their own risk. See RRS 4, Decision to Race. The organizing authority will not accept any liability for material damage or personal injury or death sustained in conjunction with or prior to, during, or after the regatta.

30 **INSURANCE**

30.1 Each participating boat shall be insured with valid third-party liability insurance with a minimum coverage of \$300,000 per event or the equivalent. A copy of insurance company documents establishing such coverage is current through the end of the regatta shall be supplied as part of completing check in.

31 **BOW NUMBERS / EVENT IDENTIFICATION STICKERS**

31.1 Boats shall display bow numbers and event bow stickers during the event as provided by the OA. They shall be attached to both sides of the boat's hull at all times while racing. Bow numbers and event bow stickers will be attached by the OA on every boat. It is the responsibility of the crew to ensure the numbers and stickers remain on the boat and obtain replacements as necessary.

32 **RACE OFFICIALS**

PRO

Hank Stuart

585-414-6105

[Hstuart8m@gmail.com](mailto:Hstuart8m@gmail.com)

Protest Committee Chair

June Shaw

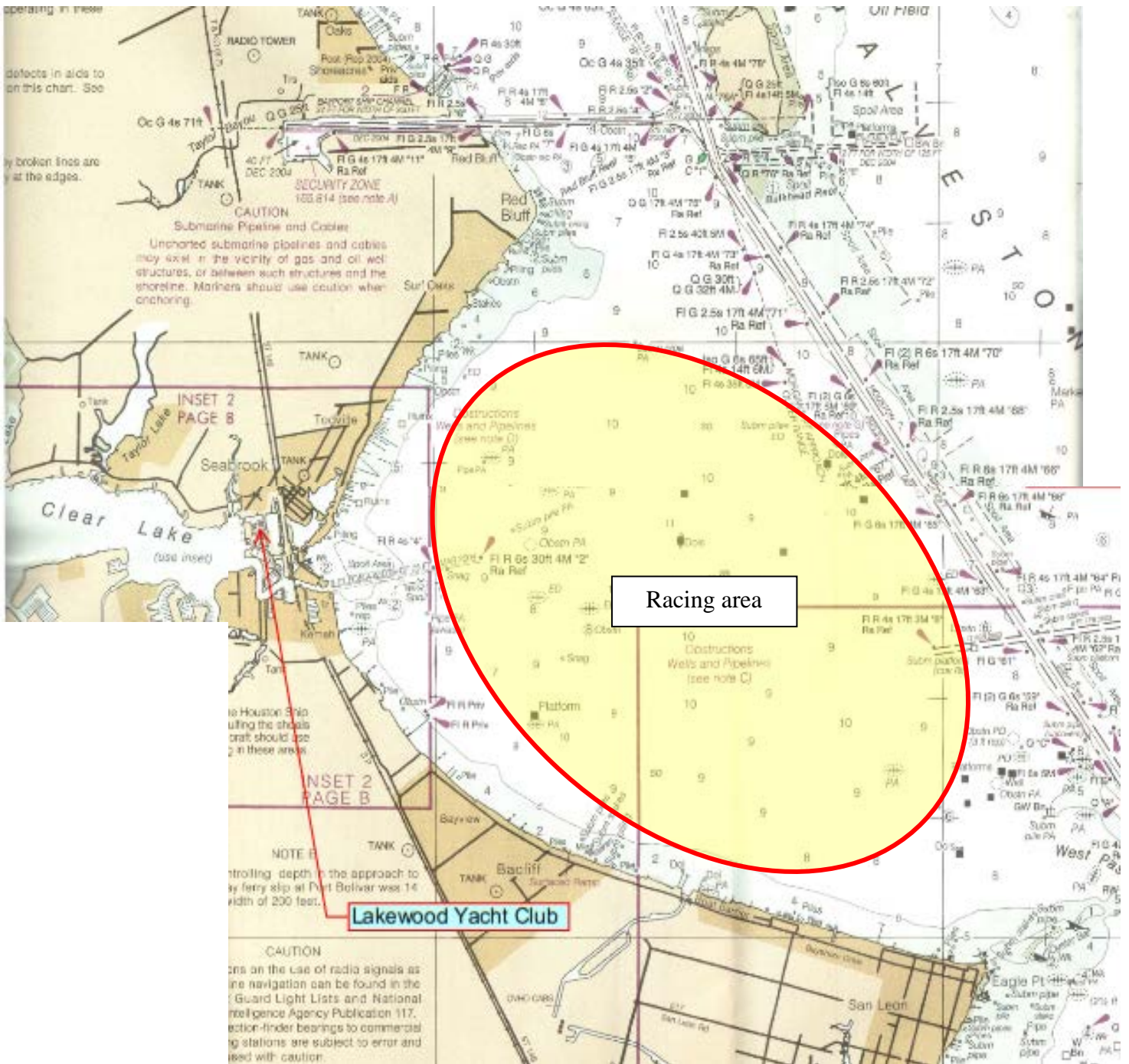
713-502-9148

[jyssails@gmail.com](mailto:jyssails@gmail.com)

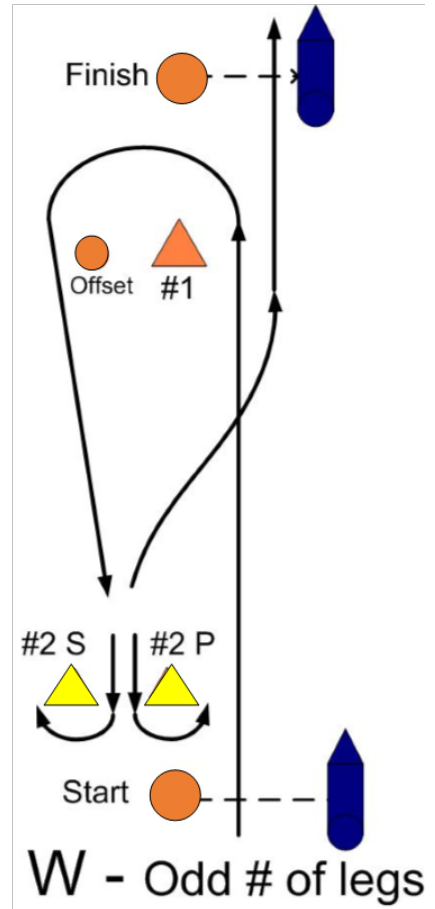
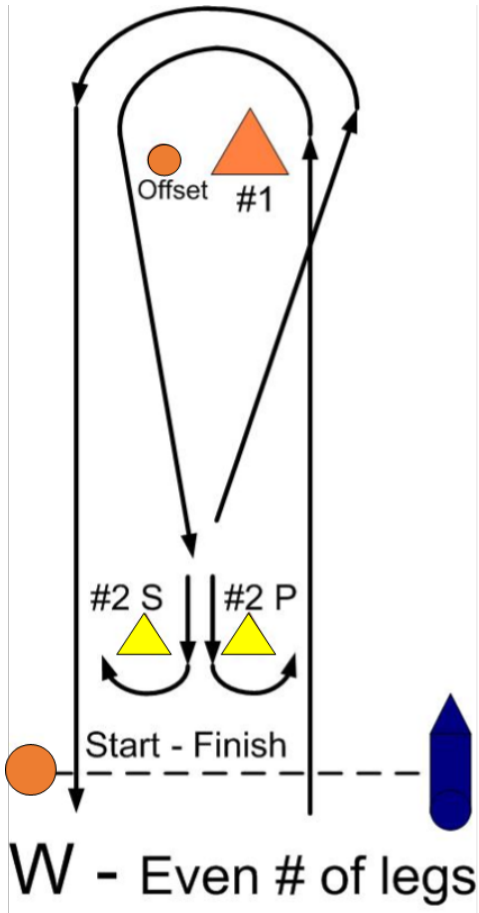
During the regatta the OA shall be represented by:

- 1 Brian Irvine - Bay Access

# Attachment 1



## Attachment 2





upstream

 **Davis  
Marine  
Electronics**  
713-206-6663

**Hayes Rigging**  
Seabrook, TX  
281-474-4505



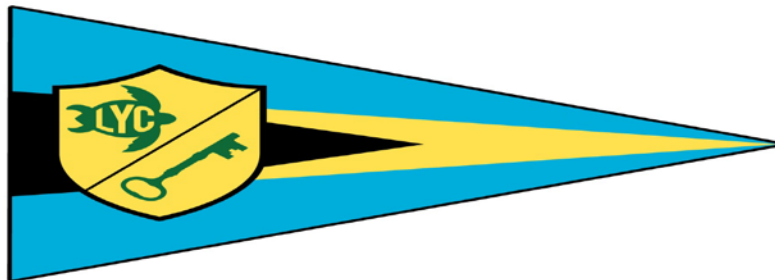
---

Layline Petroleum, LLC

 *Bay Access*  
Promoting Youth and Adult Amateur Sailing

  
**OJ's MARINE**  
FULL SERVICE YACHT REPAIR  
281-474-5186

**Y.E.S.**  
YACHT EQUIPMENT SERVICE  
281-538-9377  
YESCENTERS.COM



# LEEWARD YACHT CLUB GREEN TURTLE CAY

