



## RICHMOND YACHT CLUB

# Around 1 Island Race Race #3, 2017 Fun Series

August 26, 2017

### SAILING INSTRUCTIONS

**Organizing Authority: Richmond Yacht Club, Point Richmond, California**

#### **1 RULES**

- 1.1 This regatta will be governed by the rules as defined in the Racing Rules of Sailing (RRS).
- 1.2 RRS 40.1 is deleted and replaced with “Competitors shall wear life jackets or other adequate personal buoyancy while racing.” Note that Code Flag Y will not be displayed.

#### **2 ELIGIBILITY AND ENTRY:**

All RYC members are eligible to enter their PHRF-rated boats of at least 18ft waterline length, (current PHRF certificates not required). Boats shall enter by completing on-line registration at [www.richmondyc.org](http://www.richmondyc.org) no later than 1900 Thursday August 25.

#### **2 NOTICES TO COMPETITORS**

Notices to competitors will be posted on the official notice board, which is located in the regatta room outside the race office. Changes may also be posted on the RYC website.

#### **3 CHANGES TO SAILING INSTRUCTIONS**

Any change to the sailing instructions will be posted before 0900 on the day it will take effect, except that any change to the schedule of races will be posted by 1900 on the day before it will take effect.

#### **4 SIGNALS MADE ASHORE**

- 4.1 Signals made ashore will be displayed from the yardarm of the mast on the upper deck of the RYC clubhouse.
- 4.2 When flag AP is displayed ashore, ‘1 minute’ is replaced with ‘not less than 60 minutes’ in race signal AP. This changes “Race Signals”.

#### **5 RACE SCHEDULE**

- 5.1 

<u>Day</u>	<u>Warning Signal</u>
Saturday, August 26	12:55 pm

## **15 THE COURSE**

The course will be from the start outside the Richmond breakwater, around the Sausalito Channel Daymark "2" (YRA "N"), then around Little Harding Rock G"1" (YRA "12"), then around R"4", 1.0 nm E of Pt Blunt (YRA "8"), leaving all marks to port, and back to the finish line at the RYC Race Deck. Course length will be 12.9 miles.

## **16 THE START**

**16.1** This is a pursuit race.

**16.2** The initial start shall be in accordance with Rule 26. The Warning flag will be the RYC Burgee Flag. After the initial start, the Burgee Flag will be re-hoisted and will remain flying until the last start. All starts subsequent to the first start may be called to attention by a horn only. Hour and minute may be announced from time to time on the VHF by the Race Committee. The race committee will use GPS time.

**16.2** The starting line will be between a staff displaying an orange flag on the Pelican signal boat and an inflatable mark.

**16.3** The numbers of over early boats may be called on Chan 79. The X flag will not be displayed. Boats not re-rounding an end of the line to restart will automatically be penalized 3 places at their finish times. This changes RRS 29.

**16.4** If there is a postponement in the initial start, the signal boat will display the number of minutes of postponement with number signal flags. Competitors shall adjust their start times accordingly.

**16.5** Start times will be posted on the RYC website and at the Club no later than 10:00 am on August 26.

## **17 THE FINISH**

The finish line will be between a staff flying an orange flag on the RYC Race Deck and the nearby mark G"7", "Killer Green".

## **18 RESTRICTED AREA**

The area between the Pt Blunt Rock Buoy G"3" and the nearest point of Angel Island is restricted, due to hazardous rocks.

## **19 TIME LIMIT**

The time limit for the race will be 1700 hours on Saturday. Boats finishing after that time will be scored as DNF. This changes RRS 35.

## **20 PROTESTS AND REQUESTS FOR REDRESS**

**20.1** Protest forms will be available near the official notice board in the clubhouse. Protests shall be delivered to a Race Committee representative in the Race Office within the protest time limit, which shall be 30 minutes after the last boat finishes. The protest time limit will be posted on the official notice board.

**20.2** Notices will be posted within 30 minutes of the protest time limit to inform competitors of hearings in which they are parties.

**21 SAFETY REGULATIONS**

A boat that retires from a race shall notify the Race Committee as soon as possible.

**22 RADIO COMMUNICATION**

**22.3** The Race Committee may use VHF channel 79.

**23 PRIZES**

Prizes will be awarded as soon as possible after completion of the race.

**24 INTERFERENCE WITH COMMERCIAL VESSELS**

Rule 9 of the Inland Rules of the Road applies. Boats shall not impede the passage of a vessel which can safely navigate only within a narrow channel or fairway (see US Dept. of Commerce chart 18649 for designated shipping channels and fairways) A violation of Rule 9 is subject to protest by any competitor or the RC, and is not exonerated by an alternate penalty. RRS 60.3 is changed to add: "(d) call a hearing for an alleged breach of Rule 9 if notified by government, commercial or individual vessel of possible infraction. It shall also extend the time limit under RRS 61.3 to accept the information." A DSQ for violation of Rule 9 shall be considered a DNE.

Del Olsen – 510-517-2575  
Bill Gage – 415-509-4944

**Central & North Bay**

**Buoys of Olympic Circle – AOC, BOC, COC, EDC, FOC, GOC, HOC, XOC**

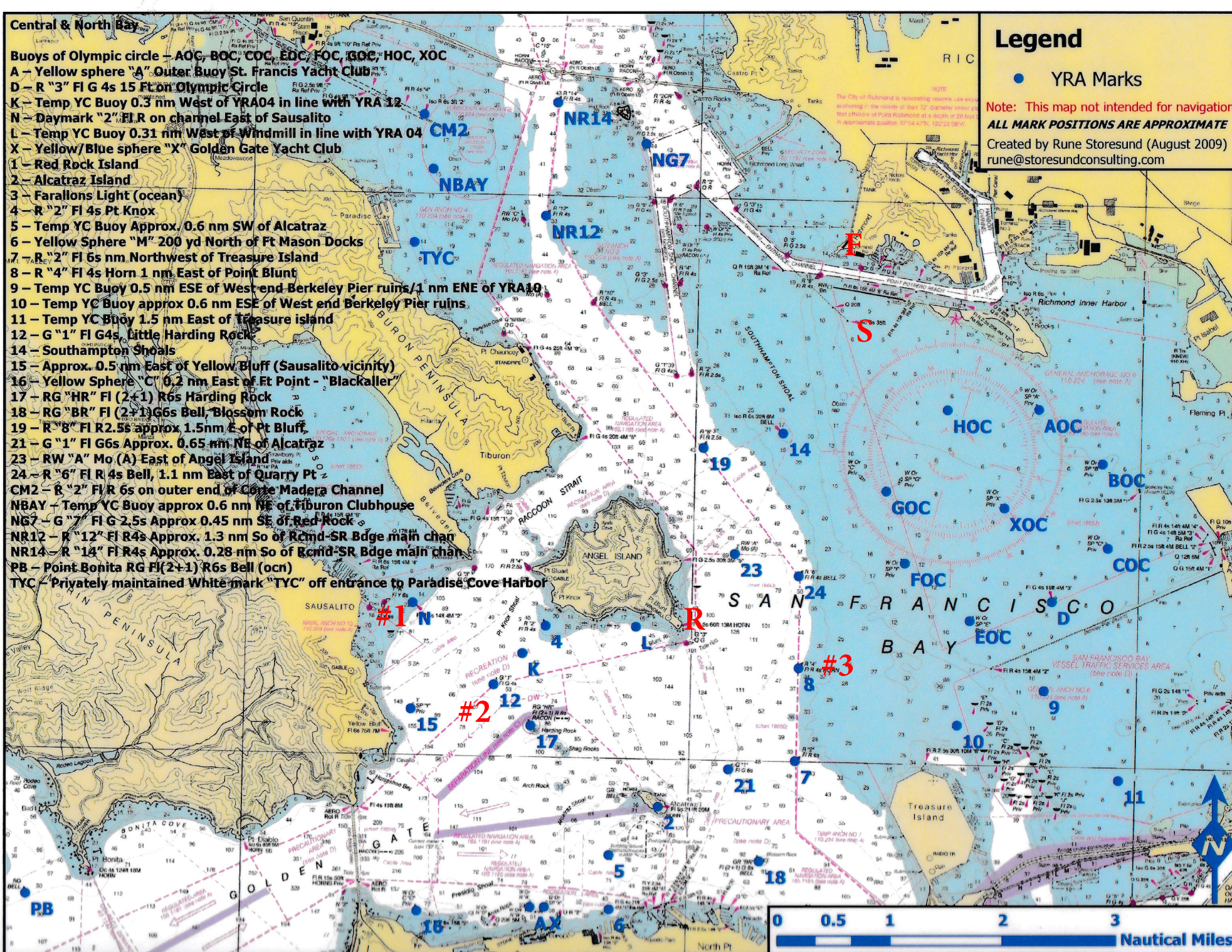
- A** – Yellow sphere "A" Outer Buoy St. Francis Yacht Club
- D** – R "3" FI G 4s 15 Ft on Olympic Circle
- K** – Temp YC Buoy 0.3 nm West of YRA04 in line with YRA 12
- N** – Daymark "2" F.R. on channel East of Sausalito
- L** – Temp YC Buoy 0.31 nm West of Windmill in line with YRA 04
- X** – Yellow/Blue sphere "X" Golden Gate Yacht Club
- 1** – Red Rock Island
- 2** – Alcatraz Island
- 3** – Farallons Light (ocean)
- 4** – R "2" FI 4s Pt Knox
- 5** – Temp YC Buoy Approx. 0.6 nm SW of Alcatraz
- 6** – Yellow Sphere "M" 200 yd North of Ft Mason Docks
- 7** – R "2" FI 6s nm Northwest of Treasure Island
- 8** – R "4" FI 4s Horn 1 nm East of Point Blunt
- 9** – Temp YC Buoy 0.5 nm ESE of West end Berkeley Pier ruins / 1 nm ENE of YRA10
- 10** – Temp YC Buoy approx 0.6 nm ESE of West end Berkeley Pier ruins
- 11** – Temp YC Buoy 1.5 nm East of Treasure island
- 12** – G "1" FI G 4s Little Harding Rock
- 14** – Southampton Shoals
- 15** – Approx. 0.5 nm East of Yellow Bluff (Sausalito vicinity)
- 16** – Yellow Sphere "C" 0.2 nm East of Ft Point - "Blackaller"
- 17** – RG "HR" FI (2+1) R6s Harding Rock
- 18** – RG "BR" FI (2+1) G6s Bell, Blossom Rock
- 19** – R "8" FI R 2.5s approx 1.5nm E of Pt Bluff
- 21** – G "1" FI G 6s Approx. 0.65 nm NE of Alcatraz
- 23** – RW "A" Mo (A) East of Angel Island
- 24** – R "6" FI R 4s Bell, 1.1 nm East of Quarry Pt
- CM2** – R "2" FI R 6s on outer end of Corte Madera Channel
- NBAY** – Temp YC Buoy approx 0.6 nm NE of Tiburon Clubhouse
- NG7** – G "7" FI G 2.5s Approx 0.45 nm SE of Red Rock
- NR12** – R "12" FI R 4s Approx. 1.3 nm So of Rcmd-SR Bdge main chan
- NR14** – R "14" FI R 4s Approx. 0.28 nm So of Rcmd-SR Bdge main chan
- PB** – Point Bonita RG FI (2+1) R6s Bell (ocn)
- TYC** – Privately maintained White mark "TYC" off entrance to Paradise Cove Harbor

**Legend**

● YRA Marks

Note: This map not intended for navigation.  
**ALL MARK POSITIONS ARE APPROXIMATE**

Created by Rune Storesund (August 2009)  
 rune@storekundconsulting.com



NOTE  
 The City of Richmond is re-evaluating markers used in anchorage in the vicinity of Pier 12 (darker yellow) on West side of Point Richmond at a depth of 24 feet in approximate location 37° 54' 47" N, 122° 25' 00" W

