

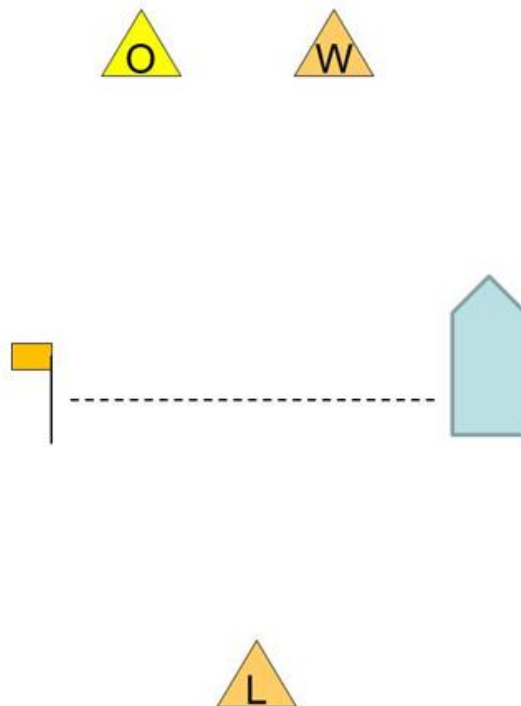


Leukemia Cup Regatta
PHRF Sat June 3rd, 2017
H2O One Design Sun June 4th, 2017
Bahia Corinthian Yacht Club
1601 Bayside Drive Corona del Mar, CA USA

Sailing Instructions **AMENDMENT 1** **posted 6/2/17 at 1610 hours by PRO Bill McNamara**

1. **RULES** - *is amended by adding*
- 1.6 RRS 44.1 is changed to a One Turn Penalty.

7. **THE COURSES AND VENUES** - *is amended by adding*
- 7.9 Sunday Harbor 20 Course(s) diagram is as follows:





Leukemia Cup Regatta
PHRF Sat June 3rd, 2017
H2O One Design Sun June 4th, 2017
Bahia Corinthian Yacht Club
1601 Bayside Drive Corona del Mar, CA USA

Sailing Instructions

1. RULES

- 1.1 The Race will be governed by the rules as defined in the *Racing Rules of Sailing (RRS)*.
- 1.2 The rules of the Performance Handicap Racing Fleet of Southern California (PHRF) will apply to boats racing Saturday.
- 1.3 The rules of the Harbor 20 Fleet 1, and any other one design fleet will apply to their boats racing Sunday.
- 1.4 The Race is classified as a Category "A" Event in accordance with ISAF Regulation 20.
- 1.5 RRS 55 will be changed by adding the following sentence to the rule: "However, discarding elastic or wool bands when setting a sail is permitted."

2. CLASSES AND CLASS FLAGS

- 2.1 PHRF class flags will be Signal Flag "A" for spinnaker Class entries and Signal Flag "C" for the non-spinnaker Class entries.
- 2.2 Harbor 20 class flags will be Signal Flags "A", "B" and "C" for boats registered from those Fleet 1 Divisions.

3. NOTICES TO COMPETITORS

Notices to competitors will be posted on the Official Notice Board located near the front office of the Bahia Corinthian Yacht Club (BCYC) and on the Regatta Network website for event # 14573:

http://www.regattanetwork.com/clubmgmt/applet_notice_board.php?regatta_id=14573

4. CHANGES TO SAILING INSTRUCTIONS

Any change to the sailing instructions will be posted before 0900 hours on the day of the race, except that any change to the schedule of races will be posted by 1700 hours on the day before the race at:

http://www.regattanetwork.com/clubmgmt/applet_notice_board.php?regatta_id=14573



5. SIGNALS MADE ASHORE

Signals made ashore will be displayed on the flagpole at BCYC

6. SCHEDULE

- 6.1 The First Warning is scheduled for 1155 each day
- 6.2 One (1) PHRF race is scheduled for Saturday
- 6.3 Four (4) Windward Leeward Harbor 20 races are scheduled for Sunday

7. THE COURSES AND VENUES

- 7.1 The course to be sailed will be displayed from the Race Committee boat prior to the Class Warning Signal
- 7.2 Marks shall be taken to port unless signaled otherwise
- 7.3 Saturday PHRF classes will sail a random leg course in the Pacific Ocean off of Orange and Los Angeles Counties starting and finishing near the Newport Beach Pier.
- 7.4 Saturday PHRF: "Outside" mark locations are shown on Attachment 1
- 7.5 Sunday Harbor 20 classes will sail windward/leeward courses inside Newport Harbor starting and finishing near the Five Points Area.
- 7.6 Sunday there will be Yellow Offset Mark set to port of the Orange Windward Mark.
- 7.7 Sunday for Harbor 20s there will be an orange Leeward Mark set to Leeward of the Start/Finish Line.
- 7.8 Sunday the number of Harbor 20 "Windward - Offset - Leeward - Finish" laps will be displayed from the Start RC Boat prior to the Class Warning Signal.

8. CHECK-IN AND START

- 8.1 Check-in at the Race Committee boat at the starting line prior to the first warning.
- 8.2 The Starting Line will be between an orange flag on the Race Committee boat and an orange flag on a staff.
- 8.3 PHRF races will be started using *RRS 26*.
- 8.4 Harbor 20 races will be started using the following "modified *RRS 26*" sequence.

Class Flag Up	Sound Signal	3 minutes before start
Prep flag up	Sound signal	2 minutes before start
Prep flag down	Long Sound signal	1 minute before start
Class flag down	Sound signal	Start



9. SCORING

- 9.1 One race must be completed to constitute a series.
- 9.2 There are no throw-outs. This changes *RRS A2*.

10. RETIREMENTS

A yacht that retires from a race shall notify the Race Committee on VHF Channel 68 as soon as possible.

11. TIME LIMITS

- 11.1 The time limit for each race is 1800 hours.
- 11.2 Any boat not finishing before the Time Limit will be scored Did Not Finish (DNF). This changes *RRS 35*.

12. FINISHING

The Finish Line will be between an orange flag on the Race Committee boat and an orange flag on a staff.

13. PENALTY SYSTEM

RRS 44.1 and *RRS 44.2* shall apply.

14. OFFICIAL BOATS

Official boats will be marked using Race Committee Flags.

15. PROTESTS AND REQUESTS FOR REDRESS

- 15.1 A boat intending to protest shall comply with *RRS 60* & *61.1* and notify the Race Committee at the finish line of her intention to protest and identify the other boats involved.
- 15.2 Protests shall be on written forms, which are available at the BCYC Front Office. Protests shall be delivered there within the Protest Time Limit.
- 15.3 For each class the Protest Time Limit is 60 minutes after the Race Committee boat has docked. This changes *RRS 61.3*
- 15.4 Notices will be posted within 30 minutes of the Protest Time Limit to inform competitors of hearings in which they are parties or named as witnesses.
- 15.5 Hearings will be held in the Jury Office at BCYC and will start within one hour of the Protest Time Limit.
- 15.6 Notice of protest by the Race Committee or Protest Committee will be posted to inform boats under *RRS 61.1 (b)*.



16. PRIZES

- 16.1 Take Home prizes will be given out after each day of racing.
- 16.2 The Commodore's Challenge trophy for PHRF boats will be awarded after the PHRF race. The current Commodore of the SCYA member organization that the boat is registered under must be aboard for the boat to be eligible for this trophy.

17. DISCLAIMER OF LIABILITY

Competitors participate in the regatta entirely at their own risk. See RRS 4, Decision to Race. The organizing authority will not accept any liability for material damage or personal injury or death sustained in conjunction with or prior to, during, or after the regatta.

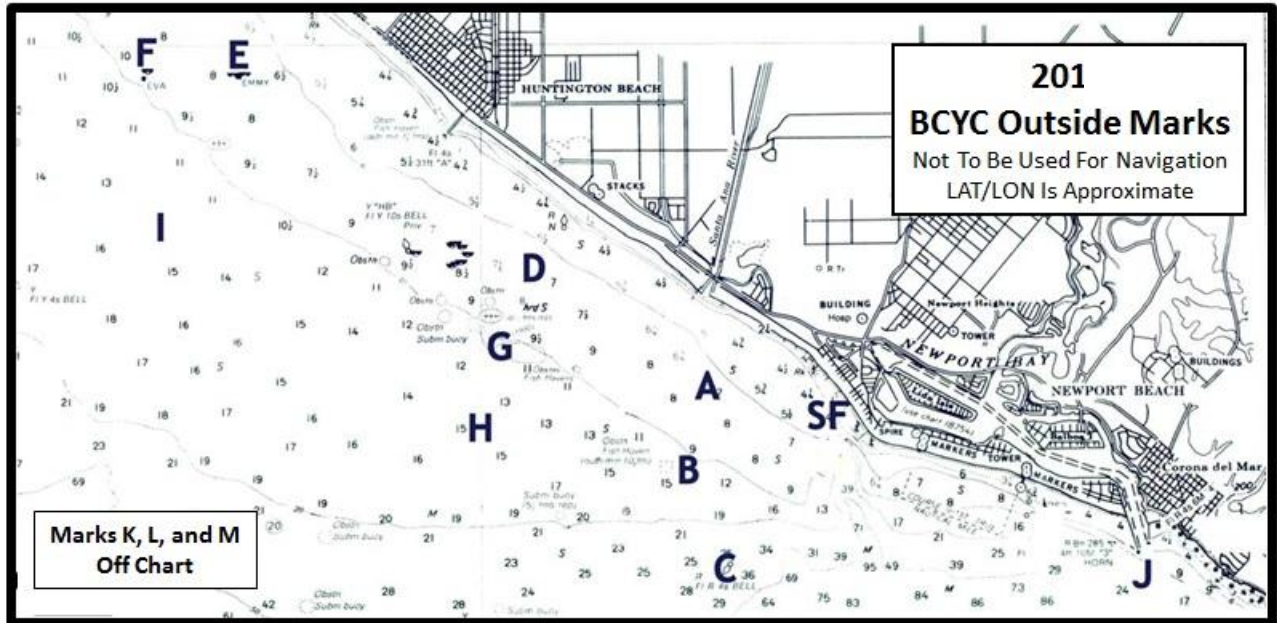
18. INSURANCE

Each participating boat shall be insured with valid third-party liability insurance with a minimum cover of \$500,000.00 per event or equivalent

19. INFORMATION

For more information, email SailFleet@BCYC.org or visit the Notice Board at: http://www.regattanetwork.com/clubmgmt/applet_notice_board.php?regatta_id=14573

Attachment 1



MARK	DESCRIPTION	LAT	LON
S/F	Start/Finish Line	N 33.36.500	W 117.56.250
A	Inflatable BCYC Mark	N 33.36.800	W 117.57.500
B	Inflatable BCYC Mark	N 33.36.000	W 117.57.700
C	Inflatable BCYC Mark	N 33.35.150	W 117.57.300
D	Inflatable BCYC Mark	N 33.37.900	W 117.59.400
E	Oil Island "Emmy"	N 33.39.700	W 118.02.650
F	Oil Island "Eva"	N 33.39.700	W 118.03.650

MARK	DESCRIPTION	LAT	LON
G	Inflatable BCYC Mark	N 33.37.200	W 117.59.800
H	Inflatable BCYC Mark	N 33.36.450	W 118.00.000
I	Inflatable BCYC Mark	N 33.38.350	N 118.03.500
J	Newport Harbor Entrance Buoy	N 33.35.100	W 117.52.700
K	Oil Island "Elly-Ellen"	N 33.35.000	W 118.07.700
L	Oil Island Esther	N 33.43.200	W 118.06.800
M	Oil Island Chaffee	N 33.44.300	W 118.08.300