



Waikiki Yacht Club
1599 Ala Moana Blvd
Honolulu, Hawaii, 96814
808.995.4405 | regatta@waikikiyachtclub.com

Sailing Instructions

D.J.JOHNSON AROUND OAHU REGATTA

May 27th, 28th, 29th, 2017

1. RULES:

1.1. The regatta will be governed by the rules as defined in the Racing Rules of Sailing (RRS), the prescriptions of US SAILING, pertinent Class/Fleet Rules, by the Waikiki Yacht Club Standing Sailing Instructions, the Notice of Race and these Sailing Instructions.

1.2. The RRS are changed as follows:

1.2.1. Rule 52 - The use of powered winches is authorized.

1.2.2. Rule 49 does not apply to Multihulls.

1.2.3.6.4 Redress: RRS 60, 63.2, 63.4, US Sailing Prescriptions to RRS 60 (Participation Committee composition) are deleted.

1.2.4. Rule 55 does not apply for spinnaker stopping materials only. It still applies to trash.

2. **NOTICES TO COMPETITORS:** Notices to competitors will be posted on the official notice board located in the WYC on the regatta board for the first day, on the KYC bulletin board for the second day and available from the Race Committee boat for the third day.

3. **CHANGES TO THE SAILING INSTRUCTIONS:** Any change to the sailing instructions will be posted before 0900 on the day it will take effect. Except on the third day, they will be passed out from the race committee boat.

4. **SIGNALS MADE ASHORE:** Signals made ashore will be displayed from the WYC flagpole for day one, the KYC flagpole for day two and all signals will be made from the race committee boat on day three.

5. SCHEDULE OF RACING:

See appendix A for Saturday, May 27th, 2017.

See appendix B for Sunday, May 28th, 2017

See appendix C for Monday, May 29th, 2017

6. PROTESTS AND REQUESTS FOR REDRESS

6.1 Protest forms are available at WYC. Protests and requests for redress or reopening shall be delivered there within the appropriate time limit.

6.2 Protests will be heard in approximately the order received as soon as possible.

6.3 Protests on incidents occurring on Day 2 will be heard immediately after the Day 3 race.

6.4 Protest notices will be posted within 30 minutes of the protest time limit to inform competitors where and when there is a hearing in which they are parties or are named as witnesses.

7. REQUIREMENTS FROM DNLR:

7.1 All boats shall follow all navigational rules at all times while in the ocean waters.

7.2 Each boat operator shall have passed the boater safety education class and have their boater safety education card on them during the use of the motorized vessels.

8. FURTHER INFORMATION;

Todd Rasmussen 722-6373 or vicecommodore@waikiyachtclub.com

APPENDIX A

May 27, 2017

Day 1

Racing Area: The racing area will be off the leeward and windward shores of Oahu

The Course: The course will be Start – DH to port – Finish. Boats shall pass all island to seaward, except Moku Manu, which may be passed on either side. Approx. 30 NM.

Signals: Class Flags as described below will be displayed for each classes Warning Signal.

| | |
|------------|---------------|
| PH A & B | Black with #1 |
| PH X | Pink with X |
| Multihulls | Blue with M |

The Start: The start will be located approx. ¼ mile southeast of the Ala Wai Harbor Entrance. The Starting Line will be between two yellow inflatable buoys. A boat shall not start later than 5 minutes after her starting signal.

| <u>Class</u> | <u>Warning</u> | <u>Start</u> |
|--------------|----------------|--------------|
| PH A & B | 0955 | 1000 |
| PH X | 1005 | 1010 |
| Multihulls | 1015 | 1020 |

The Finish: The finish is at Kaneohe Bay Sampan channel entrance. The finish line is between the Sampan Channel entrance buoy R2 and R4 with R2 to starboard. The Race Committee Boat will be on station in the Sampan Channel. Boats may communicate on **VHF Channel 68** with KYC Race Committee to verify their finish times. Boats finishing when the Race Committee is not on station shall finish and report their finish times to the Race Committee, on VHF Channel 68 or by telephone at (808) 675-6302 to Eric Aakuhus, within one hour of finishing.

Safety: Any boat that starts but returns to Waikiki rather than finishing at KYC should contact Race Committee by VHF Channel 68 or by phone at (808) 722-6373.

Entering into Kaneohe Bay and Mooring: Boats with a draft over 7 ft. should use the Main Ship Channel to enter Kaneohe Bay.

IMPORTANT NAVIGATION INFORMATION – PLEASE READ BEFORE THE RACE

Information for WYC D J Johnson - 3 Day Around Oahu Regatta

Memorial Day Weekend 2017

Skippers and crew should review these pages to note the approximate locations of the WETS Buoys. Use caution when near these buoys. They should be considered as obstructions due to the chains they pass between the buoys. These buoys are anchored to the bottom of the bay and also have chains between the buoys that are close enough to the surface that a boat may catch their keel or rudder on the chain.

This page shows the Hawaii National Marine Renewable Energy Center (aka WETS buoys) located approximately 1 mile NE of the Sampan Channel R2 Buoy in Kaneohe Bay. Information on this project may be found at: <http://hinmrec.hnei.hawaii.edu/nmrec-test-sites/wave-energy-test-site/>



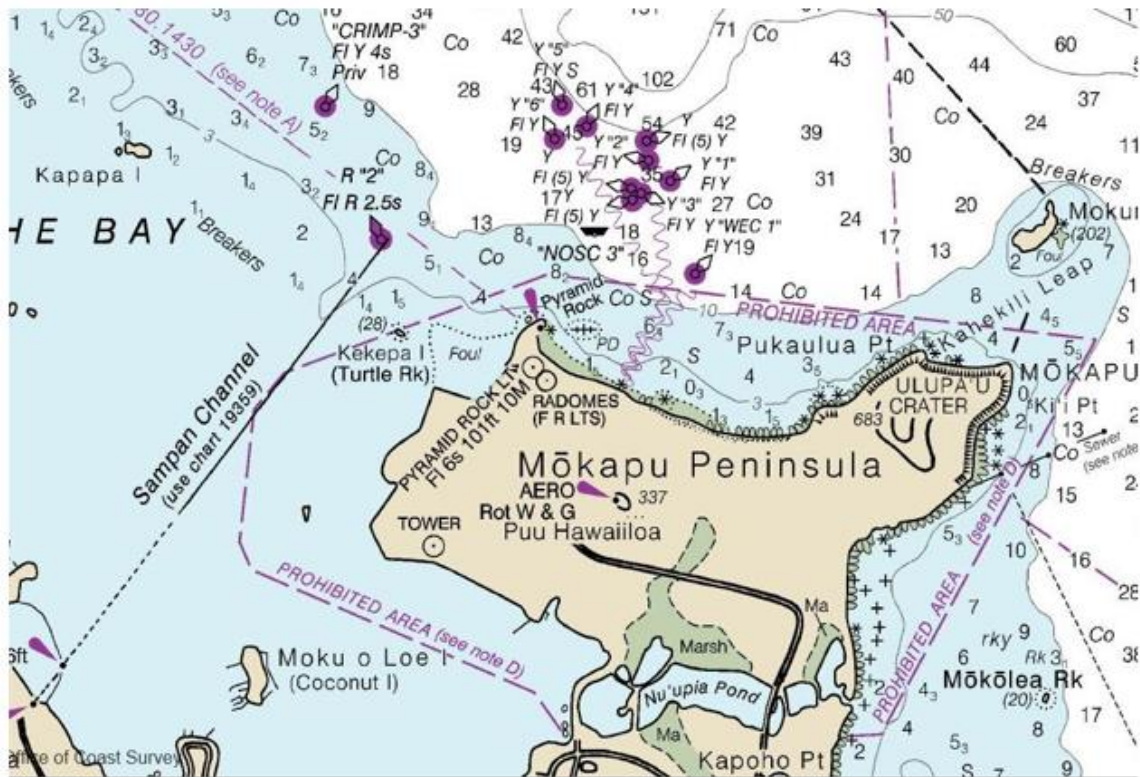
Note: NOAA Chart 19359, found at: <http://www.charts.noaa.gov/OnLineViewer/19359.shtml>

NOAA Chart 19359 12th Ed., Jul. 2007. Last Correction: 08/25/2016. Cleared through: LNM: 0717 (2/14/2017, NM: 0817 (2/25/2017)



Note: NOAA Chart 193579, found at: <http://www.charts.noaa.gov/OnLineViewer/19357.shtml>

NOAA Chart 19357 25th Ed., Mar. 2013. Last Correction 1/11/2017. Cleared through: LNM: 0717 (2/14/2017, NM: 0817 (2/25/2017)



APPENDIX B

May 28, 2017

Day 2

Racing Area: The racing area will be off the windward and north shores of Oahu.

The Course: The course will be Start – Mark X to port – Out the main channel honoring all marks except “K” – Finish. Approx. 39 NM.

Marks: Mark X will be an inflatable buoy set approximately ½ mile windward of the start line.

Signals: Class Flags as described below will be displayed for each class’s Warning Signal.

| | |
|------------|--------|
| PH A & B | Green |
| PH X | Yellow |
| Multihulls | Blue |

The Start: The Start will be between KYC and Coconut Island. The Start Line will be between a starting pin and a rectangular white flag with the letters L I N E (alternatively an orange flag) on the Race Committee signal boat.

| <u>Class</u> | <u>Warning</u> | <u>Start</u> |
|--------------|----------------|--------------|
| PH A & B | 0955 | 1000 |
| PH X | 1005 | 1010 |
| Multihulls | 1025 | 1030 |

The Finish: The finish line will be off Mokuleia at 2.8 miles prior to Kaena Point. See attachment 1. The finish line will be indicated on shore by a 8 ft. inflatable orange tetrahedron at N21 34 46.5 @158 14 13.8. The Race Committee will record finish times as boats cross a bearing line of 320 degrees magnetic from this position. Boats crossing more than ½ mile from shore may be scored DNF. Boats should record their own finish times as they cross this bearing from the Race Committee position. Boats may check in with the Race Committee on VHF Channel 68 to verify their finish times. The Race Committee will be on station until 1700. Boats finishing later shall take their own times and report to the Race Committee on VHF Channel 68 or 808 722-6373.

Safety Note: After finishing, continue well past Kaena Point before turning towards Ko'Olina to avoid submerged rocks.

MOORING: WYC has contacted Ko Olina Marina for a couple of months to secure moorings for entrant. However, we are not successful to get favorable answer to provide mooring space from Ko Olina Marina yet. We plan to submit a letter signed by commodores of HYC, KYC and WYC to Ko Olina Marina for their reconsideration. We have no guarantee to receive any favorable answer from Ko Olina Marina as of 05/01/17. Each entrant shall enter the registration based on each entrant's responsibility where you secure your boat on the second day.

APPENDIX C

May 29, 2017

Day 3

Racing Area: The racing area will be off the leeward shore of Oahu.

The Course:

Course 1: Start – BP buoys 1 & 2 to port – Pearl Harbor buoys 1 & 2 to port – HH to port – Finish. (signaled with #1 pennant) Approx. 18.7 NM

Course 2: Start – BP buoys 1 & 2 to port – Pearl Harbor buoys 1 & 2 to port – HH to port – DH to port – Finish (signaled with #2 pennant) Approx. 23.2 NM

Areas That Are Obstructions: Note the Prohibited area as indicated on attachment 2.

Signals: Class Flags as described below will be displayed for each class's warning signal.

| | |
|------------|----------------|
| PH C | Yellow with #1 |
| PH A & B | Black with #1 |
| PH X | Pink with X |
| Multihulls | Blue with M |

The Start: The Starting Line will be between a yellow inflatable buoy and the staff of an orange flag on the Race Committee Boat. It will be located to seaward of Kahe Power Plant. A boat shall not start later than 10 minutes after her starting signal.

| <u>Class</u> | <u>Warning</u> | <u>Start</u> |
|--------------|----------------|--------------|
| PH C | 0935 | 0940 |
| PH A & B | 0955 | 1000 |
| PH X | 1005 | 1010 |
| Multihulls | 1015 | 1020 |

The finish: The finish line will be between G1 and the staff of an orange flag on the Race Committee Boat. Boats finishing after 1600 shall report their finish times to WYC Race Committee on VHF Channel 68 or (808) 722-6373 as soon as possible.

Prizes: Prizes will be awarded at approximately 1600 at WYC.

Attachment 1



Attachment 2

