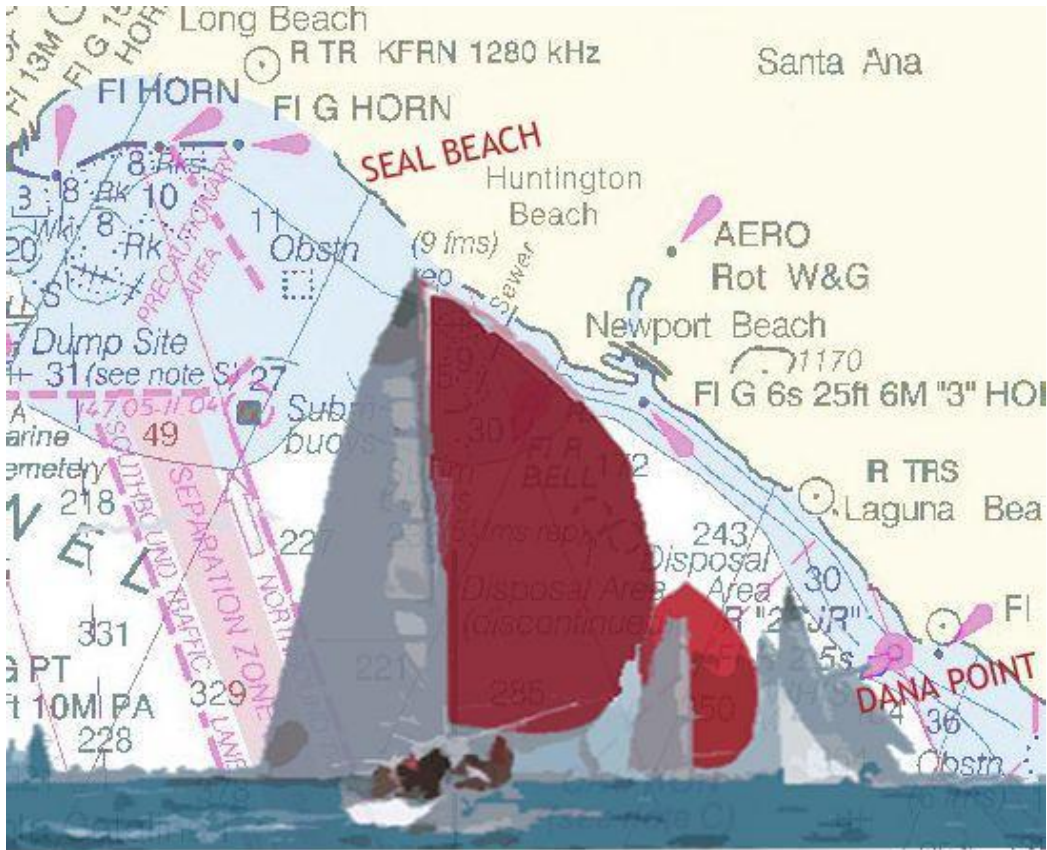


49th Annual



Seal Beach to Dana Point Yacht Race



JULY 8, 2017
NOTICE OF RACE

PART OF YRUSC OCEAN RACING CHAMPIONSHIP & DANA POINT OFFSHORE

49th Annual Seal Beach to Dana Point Race

Saturday, July 8, 2017

NOTICE OF RACE & GENERAL CONDITIONS

- **ORGANIZING AUTHORITY & MANAGEMENT** – The organizing authority for this Regatta is Dana Point Yacht Club (DPYC) and Seal Beach Yacht Club (SLBYC). The Race Committees of both clubs will manage this race jointly.
- **RULES** This race shall be governed by the Rules as defined by the Racing Rules of Sailing (RRS) with U.S. Sailing prescriptions, the rules of PHRF of Southern California (PHRF), the rules of any participating classes, this Notice of Race, except as any of these are changed by the Sailing Instructions. This regatta is classified as a Near Shore category event. If a Class Association has elected another category or advertising rule, then advertising will be restricted to that Class Rule for that Class only.

RRS 51 (Moveable Ballast), 52 (Manual Power) and 54 (Forestays and Headsail Tacks) will be modified in the Sailing Instructions.
- **ELIGIBILITY** The race is open to ocean racing / cruising sailing vessels whose owners or charterers are members of a yacht club or sailing association recognized by US Sailing or SCYA. All boats must conform to USCG and US Sailing requirements. All boats racing in any PHRF Class must have a valid current PHRF rating certificate.
- **SAFETY EQUIPMENT** All boats shall comply with the current equipment and safety regulations set forth by US Safety Equipment Regulations (USSER). This race is categorized as a USSER Nearshore Race.
- **FLEET / CLASSES** PHRF and Cruising boats will each have their own fleet and will be divided into classes based upon the type and number of entries. Any established One-Design classes will be part of the PHRF fleet. Class breaks will be based upon the boat's PHRF OWC rating or ORCA rating and other factors. Non-Spinnaker offsets and rating adjustments for fixed prop, roller furling jib or mainsail, jib size, and sail material will be used for the Cruising fleet entries, subject to the Cruising boat having a current PHRF Corinthian rating. Class breaks will be posted on the website. Anticipated classes are PHRF A, B, C, D, ORCA, and Cruising fleet. The Race Committee may establish One-Design classes for five (5) or more entries.
- **ENTRIES** **The entry deadline is 1800 hours, July 6th, 2017.** [Online entry](#) is available at the DPYC website and the date stamp of the online entry will be your entry date once payment is completed. Entry fee is \$75 unless received before July 2nd in which case the fee will be \$60. All PHRF Fleet boats must have a **current PHRF Rating Certificate**. Current PHRF certificates for any online entry where DPYC does not have the boat's certificate on file or is not able to validate it from the PHRF website must submit their certificate by fax or email. Any entry received after the deadline may be accepted or returned at the Race Committee's discretion.
- **COURSE** This is an offwind course race. First start will be at 1100 hours. The start line will be defined in the Sailing Instructions and will be located between the Race Committee Boat and a flag off the Seal Beach Pier. All boats shall leave the San Juan Whistle Buoy at Dana Point (Mark W) to port. The finish line shall be defined in the Sailing Instructions and will be located approximately 150 yards off the Dana Point jetty at a green lighted buoy, "G-1" (FLG 2.5 sec.) at approximately 33° 27.10' N by 117° 41.90' W. **HANDICAP COURSE LENGTH – 28.0 NM. Chart 18746** covers the entire race course.

- **SAILING INSTRUCTIONS:** Sailing Instructions, class breaks, start times and other information will be posted on Seal Beach Yacht Club website and on the Club race board outside the Club by 1400 on Friday, July 7th.
- **TROPHIES** The trophy presentation will be at DPYC following racing. The Keith Morgan Memorial Dana Point Race Best Boat PHRF Corrected Time Trophy will be awarded. Take home trophies will be awarded in customary numbers to all classes, as well as to the *First Overall* PHRF boat.
- **FACILITIES:** Seal Beach Yacht Club is located in Alamitos Bay at 255 Marina Drive, Long Beach, CA. 90803. SLBYC office phone is (562) 594-6337. Upon arrival, SLBYC can be contacted on VHF channel 68 for berthing assignment. If at all possible, please try to motor to Long Beach on Saturday morning. Restrooms and showers are available. Dana Point Yacht Club will obtain as many slips as possible for use by race participants over the weekend. **Slip assignments at both clubs will be on a priority basis, assigned by order of receipt of entry. Enter early to improve your chances of obtaining a slip.** If necessary, boats may anchor in the west basin of Dana Point harbor. Boats should be prepared to anchor bow and stern. DPYC will provide shore boat service to anchored boats. Upon finishing, follow the instructions in the race packet for slip or anchoring assignment at Dana Point. A 3,000-lb. hoist will be available. The DPYC facilities, including bar, dining, restrooms and showers will be available for use by skippers, crew and guests throughout the weekend, commencing Saturday evening.
- **DINING** Seal Beach Yacht Club will offer dinner on Friday night. Please call the Club to make reservations.

Dana Point Yacht Club will be open for lunch, dinner, and full bar service 10AM-9PM on Saturday. On Sunday, full service Brunch will be available beginning at 10AM.

Please indicate your estimated attendance for dinner at SLBYC and at DPYC on the entry form.

[Enter Online Here](#)

(Online entry date stamp is your entry date.)

SEAL BEACH YACHT CLUB
562.594.6337

bhubbard1@charter.net

RACE CHAIRMAN – BOB HUBBARD
562-544-4211
bhubbard1@charter.net

DANA POINT YACHT CLUB
949.496.2900
FAX 949.496.1603
www.dpyc.org

RACE CHAIRMAN – BRIAN WERNER
949-910-9940
Race@dpyc.org

Early entries receive priority for slips, Enter Now!