



Maryland State Championships and GIYS Annual Junior Regatta July 18, 2017

Sailing Instructions

1. RULES

- 1.1 The regatta will be governed by rules as defined by the current Racing Rules of Sailing (RRS) and the rules of the rules of the Optimist, International Laser, Laser Radial and Club 420 classes, except as any of these are changed by these Sailing Instructions. GIYS is the organizing authority.
- 1.2 Advertising is in accordance with the ISAF Advertising Code, Appendix 1, Regulation 20 and the relevant class rules.
- 1.3 In the event of a conflict between the Sailing Instructions and the Notice of Race, the Sailing Instructions shall govern.

2. ENTRIES

Eligible boats may enter by completing registration with the organizing authority. Eligibility requirements for competitors are:

- 2.1 Applicants for all classes must not turn 19 years old in the year of the event, or earlier.
- 2.2 Optimist class age rules apply.
- 2.3 Membership in the class association is not required
- 2.4 Chesapeake Bay Yacht Racing Association (CBYRA) membership is not required.

3. SAFETY

- 3.1 Competitors shall wear USCG approved Type III Personal Flotation Devices (PFDs) at all times while afloat, except for brief periods while changing. Flotation aids (Zhik, Baltic) are not permitted to be worn by competitors.
- 3.2 Coaches shall wear USCG approved PFDs at all times while afloat, except for brief periods while changing.
- 3.3 Failure to comply with 3.1 will be grounds for disqualification from all races sailed in violation of those instructions.
- 3.4 In the case of a coach not complying with 3.2, all sailors associated with his / her club may be subject to a penalty imposed by the protest committee, up to and including disqualification from all races sailed.
- 3.5 Protests concerning potential violations of this Section 3 can only be filed by the race committee or on the water judges.
- 3.6 Competitors and/or coaches shall supply the equipment to meet the requirements of 3.1 and 3.2.
- 3.7 A boat retiring from a race shall notify a race committee boat before leaving the course, or, when that is impossible, the Race HQ immediately after arrival ashore.
- 3.8 A boat shall carry all equipment required by her class rules.

4. CHECK-IN

Competitors must check in with the race committee signal boat for their course before the warning signal of the first race.

5. NOTICES TO COMPETITORS

Notices to competitors will be posted on the official notice board at Race HQ at the Pavilion at "The Point" on Gibson Island.

6. CHANGES IN SAILING INSTRUCTIONS

Any change to the sailing instructions will be posted before 10:30 AM on the day it will take effect, except that any change to the schedule of races will be posted by 6:00 PM on the day before it will take effect. Oral changes to the sailing instructions may be given on the water as permitted in RRS 90.2 (c) prior to giving such instructions. The signal boat shall display flag L to ask the competitors to "Come within hail". Failure to hear such oral instructions shall not be grounds for redress"

7. SIGNALS MADE ASHORE

- 7.1 Signals made ashore will be in accordance with Race Signals and displayed at the Pavilion at Race HQ at "The Point."
- 7.2 Flag AP with two horns (one horn when lowered) means, "The race is postponed. The warning signal will be made not less than 30 minutes after AP is lowered."

8. SCHEDULE OF RACES

- 8.1 Races are scheduled as follows:
0930 – Skippers Meeting – Pavilion at “The Point”
1000 – Boats on the water
1045 – First Warning - Course 1 & 2 only*
1630 – Awards ceremony

Time of First Warning for Course 3 (Optimist Green Fleet) to be announced at skipper’s meeting.

- 8.2 It is the Race Committee’s intent to hold as many as five (5) races as time and weather conditions permit, but one race shall constitute a regatta. However, it is understood by all competitors that the PRO on each course (1, 2 or 3) at his/her sole discretion may shorten, abandon, or modify a race in accordance with the RRS. No warning signal will be made after 1430 on any course.

- 8.3 The distance from the launch site to the racing area is approximately as follows:

Course 1 – 1.5 nm
Course 2 - 1.0 nm
Course 3 - 0.2 nm

9. CLASS FLAGS

<u>Class</u>	<u>Flag</u>
Optimist – Green	“G” on white board
Optimist – Red, Blue, White	“O” Flag
Club 420	“420” Flag
Laser Radial	“L” Flag

10. RACING AREA

The racing area will be approximately as shown in Illustration A, attached. Weather conditions may require modification of these courses areas in which case notice shall be posted at the Race HQ at the Pavilion at “The Point,” or by posting the “L” flag on the RC starting boat and proceeding to a new area.

11. COURSE DIAGRAMS

- 11.1 The diagrams in Attachment B show the courses, the order of rounding, and the side on which each mark is to be rounded or passed. Note when finishing to leeward the side of the finish mark to be passed may change depending on where the finish line is set.
- 11.2 The identifying letter of the course will be displayed on the race committee signal boat with or before the warning signal of the start.

12. MARKS

Course 1 – Intention orange hippity hops. Orange tetrahedron for course change.
Course 2 – Intention orange hippity hops.
Course 3 – Unusually shaped inflatables as announced at the Skipper’s meeting.

13. THE START

- 13.1 The starting line will extend between the staff from which an orange flag is displayed on the race committee signal boat and the course side of the port-end starting (pin) mark.
- 13.2 Boats whose warning signal has not been made shall keep clear of the starting area and of all boats whose warning signal has been made.
- 13.3 Starting Sequence. Races will be started by using Appendix U system of the RRS. The 3-minute sound signal sequence is shown in Appendix C to these Sailing Instructions.

14. RECALLS

The Race Committee intends to hail the recall or sail numbers of OCS boats after the starting signal. The failure of any boat

to hear the hail, an untimely hail of OCS boats, failure to hail any boats, and the order of the boats in the hail shall not be grounds for granting redress. This changes Rules 41 and 62.1.

15. THE FINISH

The finishing line will be between a staff displaying an orange flag or shape on the course's RC and the designated finishing mark as illustrated in the 2 Attachment B's to these SI's. Race finish boat does not necessarily have to be the race start boat.

16. CHANGE OF COURSE/SHORTEN AFTER START

Course changes either to shorten the length of the course or to change the next leg of the course will be made in accordance with Part 3 of the RRS.

17. TIME LIMIT

17.1 The time limit will be 60 minutes for the Club 420, Laser and Laser Radial classes and 60 minutes for the Optimist class. Boats failing to finish within 15 minutes after the first boat finishes or within the time limit, whichever is later, will be scored (DNF) Did Not Finish. This provision changes Rule 35.

17.2 A last place boat may be given an assured position prior to expiration of the time limit if the RC deems it necessary.

18. PROTESTS

18.1 Protests shall be in writing, forms available at the Race Committee HQ, and shall be delivered to the Protest Committee at the Race Committee HQ within 30 minutes after the race committee signal boat for the class docks.

18.2 Protests will be heard as soon as possible in approximately the order of receipt.

18.3 A boat intending to protest about an incident that occurs in the racing area shall notify the RC finish boat of her intention directly after completing the race, including the sail, number(s) of the boat(s) being protested. This is considered the first "reasonable opportunity" under Rule 61.1 and it should occur before any communication with coach or spectator boats.

18.4 Protest notices will be posted within 30 minutes of written protest delivery to inform competitors where and when there is a hearing in which they are parties to a hearing or named as witnesses. This posting shall constitute the notification required by Rule 63.2 and Rule 61.1(b).

18.5 Rule 66 is changed by adding this sentence: "on the last day of racing a party to the hearing may ask for a reopening no later than one hour after being informed of the decision."

18.6 A boat is not permitted to protest another boat for breaking Sailing Instructions 3, 21 and 22. This changes Rule 60.1 (a). The penalty for breaking these instructions may be less than disqualification at the discretion of the protest committee.

19. PROTEST ARBITRATION

19.1 Rule 44 is modified to allow a boat either to take the penalty described in Rule 44.1 and 44.2 while on the water or to take a 40% Scoring Penalty for a breach of a rule of Part 2 after the incident but prior to the protest hearing by acknowledging the infringement before arbitration or by accepting the opinion of the arbitrator.

19.2 After a protest has been lodged, one designated representative from each boat, who shall have been on the boat when the incident occurred, may appear together before an arbitrator appointed by the protest committee. No witnesses shall be allowed. The arbitrator will have each party describe the incident, limiting each party to approximately two minutes.

19.3 After hearing the testimony, the arbitrator will express one of the following conclusions:

- i. No rule was broken. The protester has the option of withdrawing the protest. If he decides to do so, he signs to this effect on the protest form. The protest is then withdrawn and shall not be reopened or appealed. If the protester does not withdraw the protest, it will be submitted to the protest committee in the normal manner.
- ii. A rule was broken by one of the boats involved. The representative of the offending boat has the option of either accepting a 40% penalty or submitting the matter to the protest committee for a protest hearing. Application of the 40% penalty shall be calculated in accordance with Rule 44.3, except that the penalty is modified to read 40%. If the penalty is accepted, the matter is closed and cannot be submitted to a hearing, be reopened, appealed or submitted for redress.

19.4 If the protestor or the representative of the offending boat elects to submit the matter to the protest committee, the protest should be submitted to the protest committee in the normal way. When protests are submitted to the protest

committee, the arbitrator shall not be a member of the protest committee hearing the protest, or be called as a witness or be present in the protest committee room. The arbitrator shall not discuss the matter with protest committee members until after the protest committee's decision has been posted.

20. SCORING

The Low-Point Scoring System, Appendix A of the racing rules, will apply for all classes. A maximum of FIVE races are scheduled, of which one shall be completed to constitute a regatta series. If five races are sailed, a boat's worst score shall be discarded.

21. DISPOSAL OF TRASH

Boats observed purposefully discharging trash into the water will either be disqualified from all races the day the infraction is observed or be subject to other suitable disciplinary action, or both.

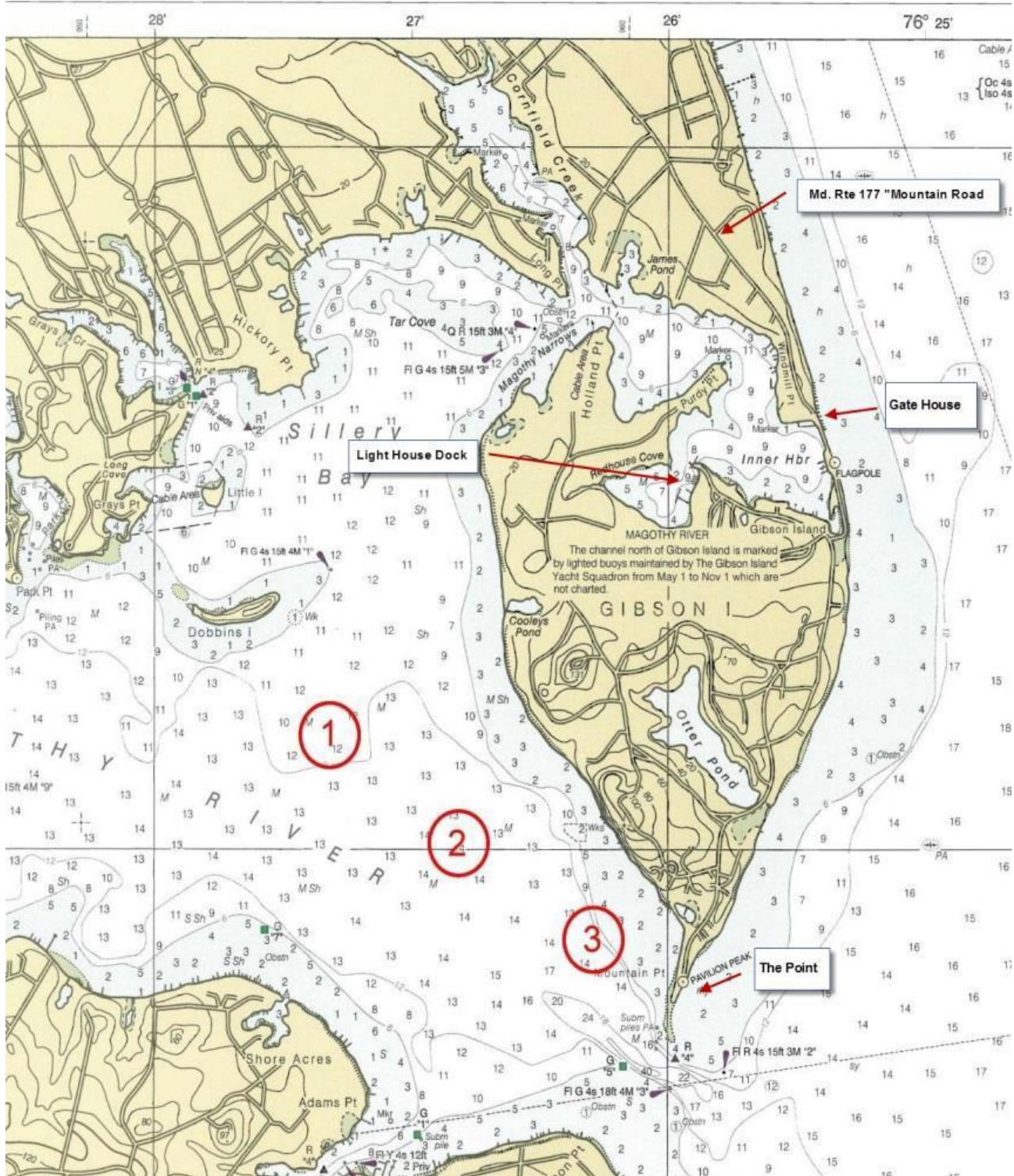
22. INSTRUCTIONS FOR COACHES, SUPPORT BOATS AND SPECTATORS

- 22.1 Support boats shall complete registration indicating their CBYRA flag number (or "no flag available"). Coaches shall display coach flag.
- 22.2 A competitor shall receive no outside assistance from coaches, spectators or support boats during any race. This restriction shall be in effect, except in the case of demonstrable emergency, prior to the start of each race, at the Warning Signal for the first class' start until after the competitor has finished race and cleared the starting area.
- 22.3 Prior to the start of each race, at the Warning Signal for the first start until after the last class has started, all coach and spectator boats shall leave the area being used by the racing boats and shall station themselves outside of either the pin end or the RC signal boat, or to leeward of the starting line but no closer than 150 ft to those limits. Thereafter, coach or support boats shall not approach closer than 300 ft to any boat that is racing, except at rounding marks or the start and finish lines, where they shall not approach closer than 150 ft immediately upwind of the windward finishing mark, or downwind of the leeward finishing mark or the extensions of the finish lines.
- 22.4 Coach and spectator boats shall monitor VHF channel 78A and shall immediately follow all instruction from the Race Committee and the Organizing Authority. At no time shall any spectator, coach, or support boat interfere in the conduct of the race.
- 22.5 At no time during the course of any race shall any competitor approach or signal a spectator boat, nor shall a spectator boat approach or signal any competitor.
- 22.6 Any competitor associated with a coach, spectator or support boat breaking the instruction of the section is subject to a penalty up to and including disqualification for the relevant race.

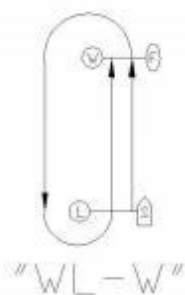
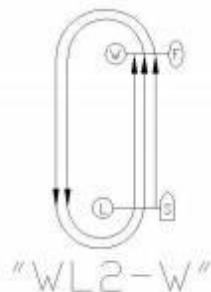
23. PRIZES

Awarded to each member of the crew placing first, second and third in the Optimist Red/Blue/White Fleets; Optimist Overall Championship (combined Red/Blue/White fleet) first three places; Laser Radial and Club 420, first three places. Presentation ribbons will be awarded in the Optimist Green Fleet, and first, second and third place finishers will be announced.

Illustration A - The Racing Areas
Course 1 -- 420/Laser/Laser Radial
Course 2 -- Opti Red/Blue/White
Course 3 -- Opti Green



ATTACHMENT B-WINDWARD LEEWARD COURSES

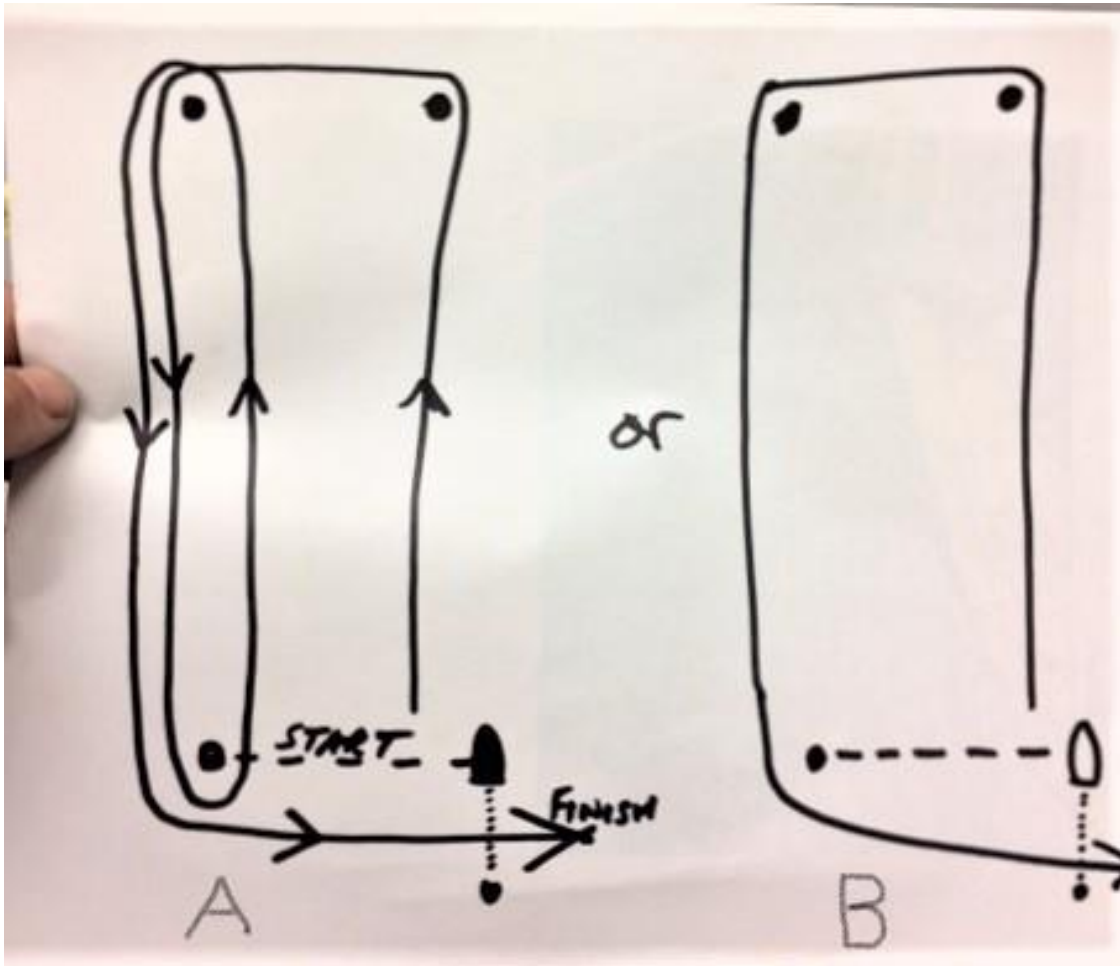


NOTE: "WL" COURSES ARE WINDWARD – LEEWARD STARTING AT THE LEEWARD MARK. THE NUMBER THAT FOLLOWS INDICATES THE NUMBER OF LAPS FROM WINDWARD TO LEEWARD.

IF THE FINISH IS TO BE AT THE WINDWARD MARK THEN THE COURSE DESIGNATION WILL BE FOLLOWED BY ANOTHER "W" AS SHOWN ABOVE

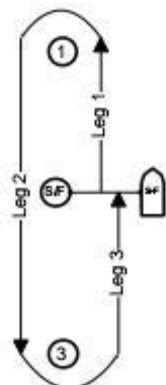
ATTACHMENT B – OPTI CHAMPIONSHIP COURSES

Course 2 signal boat will post course configuration (A or B) on the signal boat white board prior to each race



ATTACHMENT B MID LEG START – FINISH COURSES

MID LEG START/FINISH COURSES ARE DESIGNATED BY THE LETTERS "MWL" DISPLAYED ON THE START/FINISH BOAT FOLLOWED BY THE NUMBER OF LAPS



FOR EXAMPLE: THE COURSE SHOWN IS DESIGNATED "MWL-1"
 ONE LAP IS DESIGNATED BY "MWL-1" ON THE RC START/FINISH BOAT
 TWO LAPS ARE DESIGNATED BY "MWL-2" POSTED ON THE RC START/FINISH BOAT
 COMPETITORS MAY SAIL THROUGH THE STARTING LINE ON THE DOWNWIND LEG(S), BUT
 THEY ARE NOT REQUIRED TO DO SO.

Appendix C: Sound Start Sequence

Signal	Sound	Time Before Start
Warning	3 long	3 minutes
Preparatory 2 long	2 minutes	
	1 long, 3 short	1 minute, 30 seconds
	1 long	1 minute
	3 short	30 seconds
	2 short	20 seconds
	1 short	10 seconds
	1 short	5 seconds
	1 short	4 seconds
	1 short	3 seconds
	1 short	2 seconds
	1 short	1 second
Start	1 long	0