

**2017 Mary D Regatta
Block Island Boat Basin, Block Island RI
July 22, 2017**

SAILING INSTRUCTIONS

1 RULES

The regatta will be governed by the rules as defined in *The Racing Rules of Sailing (2017-2020)*. The rules of the PRHF Narragansett Bay Class will apply to the each of the PRHF classes.

2 ENTRIES

Competitors may enter by delivering a completed entry form and paying the appropriate entry fee on the event web site (www.regattanetwork.com/event/15231) or by mail to the Regatta Chair before they compete in the regatta. Fees: Pre Registration \$35, Day of race Registration \$40.

3 NOTICES TO COMPETITORS

Notices to competitors will be posted on the official notice board located at the event web site above, by email, or by SMS text messages. On the course Radio Announcements will be made on channel 78.

4 CLASSES

Classes shall be determined at the discretion of the race committee. It is anticipated that there will be a spinnaker class and a cruising (non-spinnaker class).

5 SCHEDULE and CLASS FLAGS

The warning signal for the first race will be at 1300 on July 22, 2017. Any postponed race will be started as soon as possible after that time. A solid blue flag will designate the PRHF Class.

6 RACING AREA

The racing area will be in Block Island Sound, West of the entrance channel of the Great Salt Pond.

7 COURSES and MARKS

The course will be a windward-leeward course, depending on the wind direction, with the start-finish line being approximately 500 yards west of R"2" unless otherwise designated by the Race Committee.. The probable course number designation will be provided at the Skippers Meeting and the Actual Course number will be designated on a white board on the Race Committee Start Boat before the Preparatory Signal. All marks will be orange inflatable marks or government marks. Course descriptions follow in Section 14 below.

8 STARTING AND FINISHING LINES; STARTING SYSTEM

The starting and finishing lines will be between an orange flag on the race committee boat and a lime green inflatable buoy. The Starting Sequence will be the Standard 5 minute start as proscribed in the RRS rule 26.

- 5 Minutes: Warning Signal, Class (blue) Flag goes up, 1 horn.
- 4 Minutes: Preparatory Signal, P Signal goes up, 1 horn
- 1 Minute: One Minute Signal, P Signal flag removed, 1 long horn
- 0 Minutes START Signal, Class (Blue) Flag Removed, 1 horn

9 TIME LIMIT

The time limit will be 3 hours for the first boat to sail the course in accordance with rule 28.1.

10 PENALTY SYSTEM

RRS 44.1 (the Two Turns Penalty) will be in effect.

11 PROTESTS

Protests shall be delivered to the Protest Committee or their designee at the Block Island Boat Basin within one hour after the Race Committee finish boat docks. A list of protests received and their hearing status will be posted on the official notice board. Hearings will be held as soon as possible after any protest is received

12 SCORING

Low Point Scoring System described in RSS A4 will be used.

13 HANDICAPS

PHRF Narragansett Bay handicaps will be used. For Custom Yachts, each skipper shall be responsible for providing a PHRF rating certificate to the Race Committee. Reference may be made to the United States Sailing Association PHRF book. Yachts which will be sailing in the non-spinnaker class will have their PHRF handicap increased by the following allowances as per the PHRF NE non-spinnaker class rating system.

3/4 Fractional rig: PHRF + 6 sec/nm,
15/16th rig (Spin Halyard not at masthead): PHRF + 9 sec/nm,
Full rig: PHRF + 12 sec/nm

14 COURSES

Buoy Locations:

Start-Finish line is located 0.5 Miles due West of the red marker "4" at the end of the breakwater at the entrance to the channel of New Harbor (41.19914° N, 71.60223° W)

R "2" bell is located at the entrance to the channel of New Harbor (41.20148° N, 71.59421° W)

R "6" bell is located 0.3 Miles due West of the Southwest Point (41.15933° N, 71.61889° W)

R "4" whistle is located 1.0 Mile from R "6" at course 190° True (41.14516° N, 71.62254° W)

G "1BI" bell is located 2.1 Miles due North of the North Light (41.25807° N, 71.57584° W)

"Southwest Ledge Lighted Whistle Buoy 2" is located 6.6 miles from of R "2" at a course of 210° True (41.10645° N, 71.67058° W)

Mary D Race Buoy (West) Orange inflatable race buoy is located 3.0 Miles due West of the **Start-Finish** line (41.1961° N, 71.6661° W)

*NOTE: The **Start-Finish** line and the **Mary D Race Buoy (West)** positions are approximate and may change based on wind direction.*

Courses:

Southerly Wind Direction

Course 1 (Start-Windward-Leeward-Finish) 14.6 Miles

LEG 1: **Start-Finish** to R "6" (2.9 Miles at Course 197° True);
LEG 2: R "6" to G "1BI" (7.3 Miles at Course 19° True); and
LEG 3: G "1BI" to **Start-Finish** (4.4 Miles at Course 199° True).
NOTE: Leave all marks to Starboard

Course 2 (Start-Windward-Leeward-Finish) 16.5 Miles

LEG 1: **Start-Finish** to R "4" (3.9 Miles at Course 196° True);
LEG 2: R "4" to G "1BI" (8.3 Miles at Course 17° True); and
LEG 3: G "1BI" to **Start-Finish** (4.4 Miles at Course 199° True).
NOTE: Leave all marks to Starboard

Course 3 (Start-Windward-Leeward-Finish) 7.8 Miles

LEG 1: **Start-Finish** to **R “4”** (3.9 Miles at Course 196° True);

LEG 2: **R “4”** to **Start-Finish** (3.9 Miles at Course 16° True);

NOTE: Leave all marks to Starboard

Southwesterly Wind Direction

Course 4 (Start-Windward-Leeward-Finish) 13.2 Miles

LEG 1: **Start-Finish** to **Southwest Ledge Lighted Whistle Buoy 2”** (6.6 Miles at Course 210° True);

LEG 2: **Southwest Ledge Lighted Whistle Buoy 2”** to **Start-Finish** (6.6 Miles at Course 30° True);

NOTE: Leave all marks to Port

Westerly Wind Direction

Course 5 (Start-Windward-Reaching Buoy-Leeward-Finish) 12.6 Miles

LEG 1: **Start-Finish** to **Mary D Race Buoy (West)** (3.0 Miles at Course 270° True);

LEG 2: **Mary D Race Buoy (West)** to **R “2”** (3.2 Miles at Course 90° True); and

LEG 3: **R “2”** to **Mary D Race Buoy (West)** (3.2 Miles at Course 270° True).

LEG 4: **Mary D Race Buoy (West)** to **Start-Finish** (3.2 Miles at Course 90° True).

NOTE: Leave all marks to Port

Northerly Wind Direction

Course 6 (Start-Windward-Leeward-Finish) 14.6 Miles

LEG 1: **Start-Finish** to **G “1BI”** (4.4 Miles at Course 18° True);

LEG 2: **G “1BI”** to **R “6”** (7.3 Miles at Course 198° True); and

LEG 3: **R “6”** to **Start-Finish** (2.9 Miles at Course 17° True).

NOTE: Leave all marks to Port

Course 7 (Start-Windward-Leeward-Finish) 8.8 Miles

LEG 1: **Start-Finish** to **G “1BI”** (4.4 Miles at Course 18° True);

LEG 2: **G “1BI”** to **Start-Finish** (4.4 Miles at Course 199° True).

NOTE: Leave all marks to Port

Easterly Wind Direction

Course 8 (Start-Windward-Leeward-Finish) 6 Miles (may be repeated for a 12 mile race).

Note: Start Finish line may be set more to the West than normal to allow a short upwind LEG 1

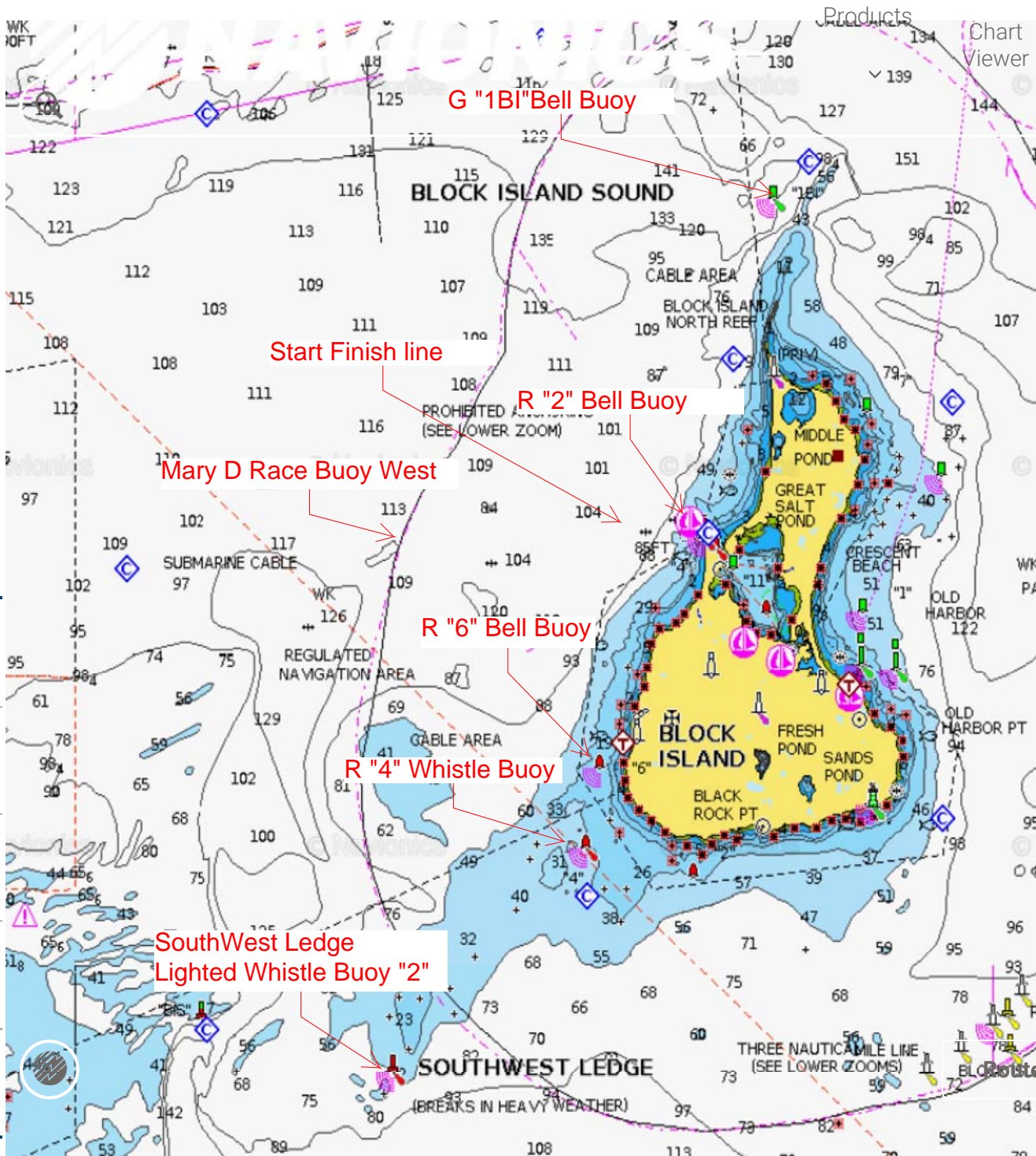
LEG 1: **Start-Finish** to **R “2”** (.5 Miles at Course 90° True);

LEG 2: **R “2”** to **Mary D Race Buoy (West)** (3 Miles at Course 270° True); and

LEG 3: **Mary D Race Buoy (West)** to **Start-Finish** (2.5 Miles at Course 90° True).

NOTE: Leave all marks to Port

NOTE: The courses between buoys are direct, and do not account for obstructions such as shallow water, rocks, breakwaters and land.



Mary D Race Course Chart showing approximate locations of Start Finish Line and race course marks.