



2017 Florida Regional Sunfish Championship

November 4-5, 2017

Sarasota, FL

Sailing Instructions

The Organizing Authority is the Sarasota Sailing Squadron.

1 RULES

The regatta will be governed by the rules as defined in The Racing Rules of Sailing (RRS).

2 NOTICES TO COMPETITORS

Notices to the competitors will be posted on the official notice board on the porch near the business office of the Sarasota Sailing Squadron.

3 CHANGES TO THE SAILING INSTRUCTIONS

3.1 Any change to the format or schedule of races will be posted by 2100 on the day before it will take effect.

3.2 Any change to the sailing instructions will be posted at least 90 minutes prior to the first warning signal.

4 SIGNALS MADE ASHORE

4.1 Signals made ashore will be displayed from the flag pole at the Sarasota Sailing Squadron.

4.2 When flag AP is displayed ashore, '1 minute' is replaced with 'not less than 45 minutes' in the Race Signal AP. This changes Race Signal AP.

5 SCHEDULE OF RACES

Day	First Warning	
Sat, Nov 5	1200	Multiple races to follow.
Sun, Nov 6	1000	Multiple races to follow. No warning after 1500.

6 CLASS FLAG

The Class flag will be the Sunfish logo on white background.

7 RACING AREA

The racing area will be on Sarasota Bay approximately 1-2 miles north of the Clubhouse, as shown in Attachment 1.

8 COURSES

8.1 The diagrams in Attachment 2 show the courses, including the approximate angles between legs, the order in which marks are to be passed, and the side on which each mark is to be rounded.

8.2 The course identifier, approximate magnetic bearing and distance in nautical miles to the first mark will be displayed from the race committee signal boat prior to the warning signal for each race.

8.3 An example is shown below:

4	Four legs, downwind finish
270	Approx magnetic bearing to windward mark
0.8	0.8 nm to windward mark

9 MARKS

	Original	Change
Mark 1	Yellow Tetrahedron	Orange Tetrahedron
Marks 2A, 2B	Yellow Tetrahedrons	
Start and Finish pins	Green Tetrahedrons	
Offset	Small red/orange buoy	
Start, finish	RC vessels	

10 THE START

10.1 The starting line will be between a staff displaying an orange flag on the race committee signal boat at the starboard end and either (a) the course side of the starting mark or (b) a staff displaying an orange flag on a boat at the port end.

10.2 A boat starting later than 5 minutes after her starting signal will be scored Did Not Start (DNS) without a hearing. This changes RRS 63.1 and A4.

10.3 When there has been a long postponement and when more than one race will be held on the same day, multiple sound signals will be used to alert boats of an upcoming warning signal.

11 CHANGE OF THE NEXT LEG OF THE COURSE

11.1 To change the next leg of the course, the race committee will:

- a. lay a change mark or
- b. move the finishing line or
- c. move the leeward gate.

11.2 When a new mark is laid, the original mark will be removed as soon as possible. When in a subsequent change a new mark is replaced, it will be replaced by an original mark. Individual gate marks may be moved (without signal) to maintain the configuration of the course.

12 THE FINISH

12.1 The finish will be between the staff of an orange flag on the RC finish boat at the starboard end and the course side of the finishing mark at the port end.

12.2 Flag A displayed, with no sound, while boats are finishing means "no more racing today".

13 TIME LIMIT

- 13.1 The time limit for the first boat in each race is 90 minutes.
- 13.2 Boats still racing more than 30 minutes after the first boat sails the course and finishes will be scored TLE with points equal to the number of finishers plus 2.

14 PROTESTS AND REQUESTS FOR REDRESS

- 14.1 Protest forms will be available outside the business office of Sarasota Sailing Squadron and shall be delivered to the protest committee within one hour of the posted docking time of the race committee signal boat.
- 14.2 Within the protest time limit, the Race Committee will post the sail numbers of all boats that are penalized under RRS 29 and 30. A boat so notified may only file a request for a redress hearing within 60 minutes. This changes RRS 62.2.
- 14.3 Notices of protests by the race committee or protest committee will be posted to inform boats under RRS 61.1(b).
- 14.4 A notice indicating the parties, time, and order of hearings fulfilling the requirements of RRS 63.2 and its prescriptions will be posted not later than 30 minutes following the expiration of the protest time limit.
- 14.5 A lesser penalty than DSQ (which may include no penalty) may be given at the discretion of the protest committee for an infringement of rules other than the rules of Part 2, changing RRS 64.1

15 SCORING

- 15.1 Up to seven (7) races are scheduled. When fewer than seven races have been completed a boat's series score will be the total of her race scores.
- 15.2 One race is required to be completed to constitute a series.

16 SAFETY

- 16.1 Prior to the first warning signal of the day, each boat shall sail by the stern of the RC Signal Boat on starboard tack, hail its sail number, and receive acknowledgement of having checked in.
- 16.2 A boat that retires from a race shall notify the race committee as soon as possible.
- 16.3 Personal flotation devices must always be worn while on the water, except when briefly removed to change clothing.

17 REPLACEMENT OF EQUIPMENT

Substitution of damaged or lost equipment will not be allowed unless authorized by the race committee chairman. Requests for substitution shall be made at the first reasonable opportunity.

18 EQUIPMENT AND MEASUREMENT CHECKS

A boat or equipment may be inspected at any time for compliance with the class rules and sailing instructions. On the water, a boat can be instructed by the race committee to proceed immediately to a designated area for inspection.

19 SUPPORT BOATS

- 19.1 All spectator and coach boats shall stay outside areas where boats are racing from the time of the preparatory signal until all boats have finished or retired or the race committee has signaled a postponement or abandonment, unless asked to assist on the course by the race committee.

19.2 During any starting sequence, spectator and coach boats shall stay at least 50 meters below the starting line and its extensions.

20 TRASH

Trash may be placed aboard support or official boats between races.

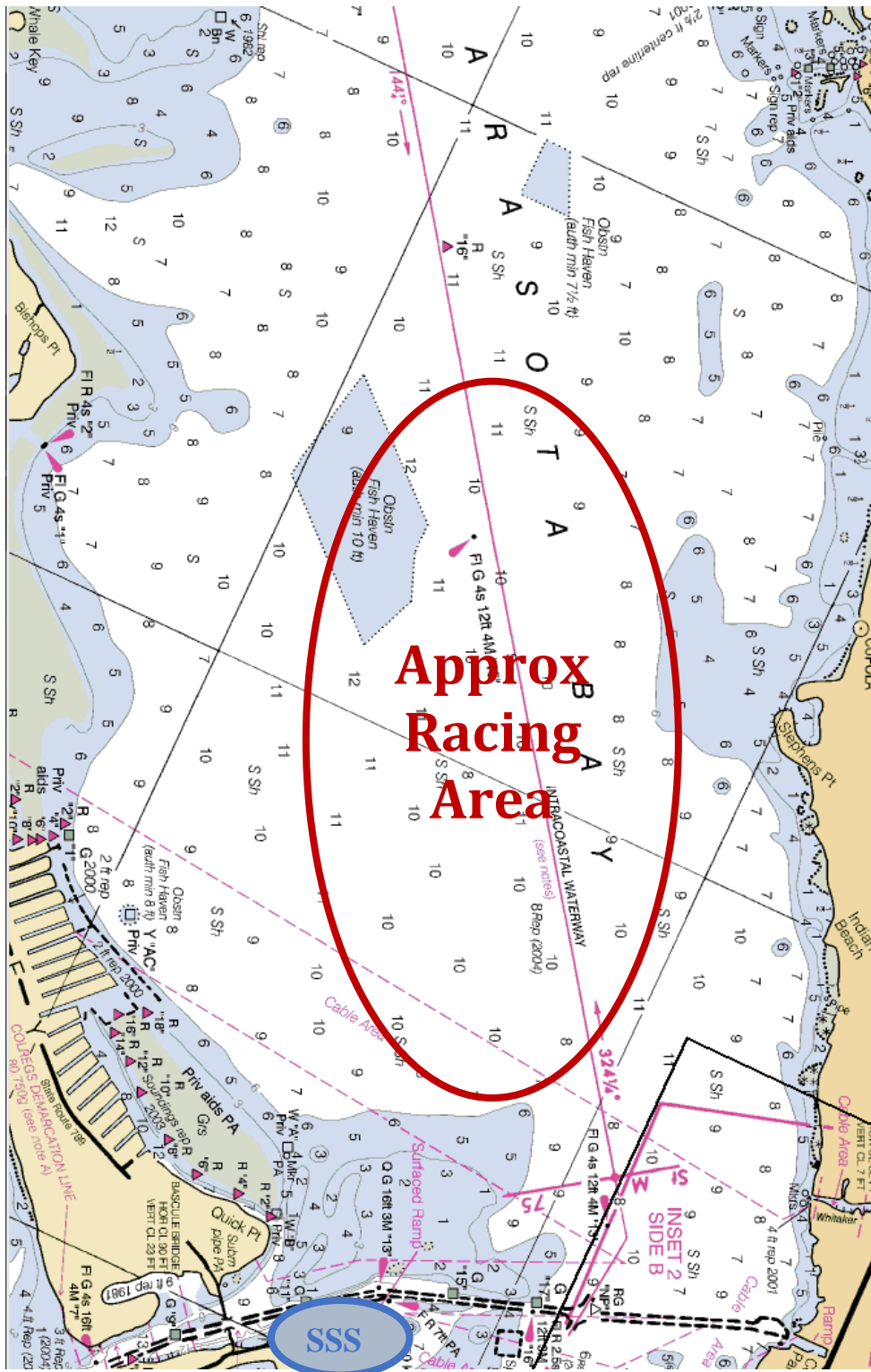
21 RADIO COMMUNICATIONS

A boat shall neither make radio transmissions while racing nor receive radio communications not available to all boats. This restriction also applies to mobile telephones.

22 DISCLAIMER OF LIABILITY

Sailing is an activity that has an inherent risk of damage and injury. Competitors in this event are participating entirely at their own risk. See rule 4, Decision to Race. The race organizers (organizing authority, race committee, jury, host club, sponsors or any other organization or official) will not be responsible for damage to any boat or other property or the injury to any competitor, including death, sustained because of participation in this event. By participating in this event each competitor agrees to release race organizers from all liability associated with such competitor's participation in this event fully permitted by law.

Attachment 1 - Racing Area



Attachment 2 - Courses

