



## Sailing Instructions

# Nacra 15 North American Championship

The Organizing Authority is the Miami Yacht Club Youth  
Sailing Foundation

1001 McArthur Causeway  
Miami, FL 33132

### **1.0 Rules:**

- 1.1 The Regatta will be governed by the rules as defined in The Racing Rules of Sailing (*RRS*)
- 1.2 Nacra 15 Class Rules shall apply
- 1.3 *RRS* appendix P, Special Procedures for rule 42 will apply.

### **2.0 Notice to Competitors:**

- 2.1 Notice to Competitors will be posted on the official Notice Board located in the entryway to the Miami Yacht Club and on Regatta Network (<http://www.regattanetwork.com/event/15359>).

### **3.0 Changes to the Sailing Instructions**

- 3.1 Any changes made to the sailing instructions will be posted before 0830 on the day change will take effect. Any Change to the schedule of races will be posted by 2000 the day before that change will take effect.

#### **4.0 Signals Made Ashore**

- 4.1 All signal made ashore will be displayed on the flagpole at the Miami Yacht Club.

#### **5.0 Schedule of Races**

- 5.1 Saturday November 18, first warning signal will be 1200.  
Sunday November 19<sup>th</sup>, first warning signal will be 1100.  
Monday November 20<sup>th</sup>, first warning signal will be 1100.
- 5.2 No warning signal will be made after 1400 on the final day of racing.

#### **6.0 Class Flag:**

- 6.1 The class flag will be the Nacra 15 class insignia on white background.

#### **7.0 The Race Area:**

- 7.1 The race area will be chosen based upon predicted weather.
- 7.2 The primary Race Area will be located 4.5nm east on the near coastal area of the Atlantic Ocean due east of Fisher Island, see attachment A
- 7.3 The secondary race area will be located .7nm north on the Atlantic Intracoastal Waterway immediately north of the Venetian Causeway, see Attachment B
- 7.4 The third racing area will be 3.7nm south on the northern portion on Biscayne Bay (in the Atlantic Intracoastal Waterway) see attachment C.
- 7.5 The competitors will be notified by 0800 each day as to which course will be sailed.

#### **8.0 Courses to be Sailed:**

- 8.1 The Course will be windward leeward (WL) with a gate. See attachment D
- 8.2 The Race Committee will display the approximate compass bearing to the first mark.
- 8.3 Courses will not be shortened. This Changes RRS Rule 32.

## **9.0 Marks:**

- 9.1 Mark A will be an orange tetrahedral
- 9.2 The offset mark will be small orange sphere.
- 9.3 The gate marks will be yellow.

## **10.0 THE START**

- 10.1 Races will be started by using RRS 26 with the warning signal made five (5) minutes before the starting signal.
- 10.2 The starting line will be between a staff displaying an orange flag on the port side of the signal boat and a staff displaying an orange flag on the starboard side of an RC support boat.
- 10.3 The orange line flags will be displayed not less than 5 minutes prior to the warning signal.
- 10.4 A boat that does not start within four (4) minutes after her starting signal will be scored Did Not Start (DNS) without a hearing. This changes RRS A4 and A5.

## **11.0 CHANGE OF THE NEXT LEG OF THE COURSE**

- 11.1 To change the next leg of the course, the race committee will drop an orange tetrahedral with a black band in the new position.

## **12.0 THE FINISH**

- 12.1 The finishing line will be on the opposite side of the signal boat than the start line. The finish line will be a staff displaying an orange flag on the starboard side of the signal boat and an orange tetrahedral on the opposite end of the line.

## **13.0 PENALTY SYSTEM**

- 13.1 RRS 44.1 and RRS P2.1 are changed so that the Two-Turns Penalty is replaced by the One-Turn Penalty.

## **14.0 TIME LIMITS**

- 14.1 The time limit for each race is 35 minutes.
- 14.2 Failure to finish within the time limit described in SI 14.1 and SI 14.3 will not be grounds for redress. This changes RRS 62.1(a).

- 14.3 Boats failing to finish within 15 minutes after the first boat sails the course and finishes will be scored Did Not Finish (DNF) without a hearing. This changes RRS 35, A4 and A5

## **15.0 PROTESTS AND REQUESTS FOR REDRESS**

- 15.1 Protest forms are available on the official bulletin board at the Miami Yacht Club (in the entrance breezeway).
- 15.2 The protest time limit is 60 minutes after the signal boat has docked at the Miami Yacht Club pier.
- 15.3 Notices will be posted no later than 30 minutes after the protest time limit to inform competitors of hearings in which they are parties or named as witnesses. Hearings will be held in the jury room, located at the Miami Yacht Club Youth Sailing Foundation facility.
- 15.4 On the last scheduled day of racing, a request for redress from a jury decision shall be delivered no later than 30 minutes after the decision was posted. This changes RRS 62.2.
- 15.5 A request for a decision in writing has to be delivered within one hour after the decision is given verbally. This changes RRS 65.2.
- 15.6 A request for correction of an error in the published results has to be delivered within the protest time limit of the last scheduled day of racing or within 60 minutes after posting of the results, whichever is later. When the request is not granted, the protest time limit is 60 minutes after the boat is informed that the request is not granted. This changes RRS 62.2.

## **16.0 SCORING**

- 16.1 The Low Point Scoring System, Appendix A2, shall be used except as modified in SI 16.2, SI 16.3 and SI 16.4
- 16.2 Three races are required to be completed to constitute a series.
- 16.3 When fewer than five (5) races have been completed, a boat's series score will be the total of her race scores.
- 16.4 When five (5) or more races have been completed, a boat's series score will be the total of her race scores excluding her worst score.

## **17.0 SAFETY REGULATIONS**

- 17.1 A boat that retires from a race shall notify the race committee as soon as possible.
- 17.2 Competitors shall wear personal flotation devices at all times while afloat.
- 17.3 All Competitors (boats) shall carry a painter of at least 30 feet in length and of a diameter and construction that the boat and crew can safely be towed.

## **18.0 SUPPORT BOATS and SPECTATOR BOATS**

- 18.1 Team leaders, coaches, other support personnel and spectator boats shall stay outside areas where boats are racing from the time of the preparatory signal until all boats have finished or retired or the race committee signals a postponement, general recall or abandonment.
- 18.2 Support boats shall be marked with their national flag or country letters.

## **19.0 RADIO COMMUNICATION**

- 19.1 Except in an emergency, a boat that is racing shall not make voice or data transmissions and shall not receive voice or data communication that is not available to all boats.

## **20.0 RIGHTS TO USE NAME AND LIKENESS**

- 20.1 By participating in this event, competitors automatically grant to the organizing authority and the event sponsors the right, in perpetuity, to make, use and show, at their discretion, any photography, audio and video recordings and other reproductions of them made at the venue or on the water from the time of their arrival at the venue, until their final departure, without compensation.

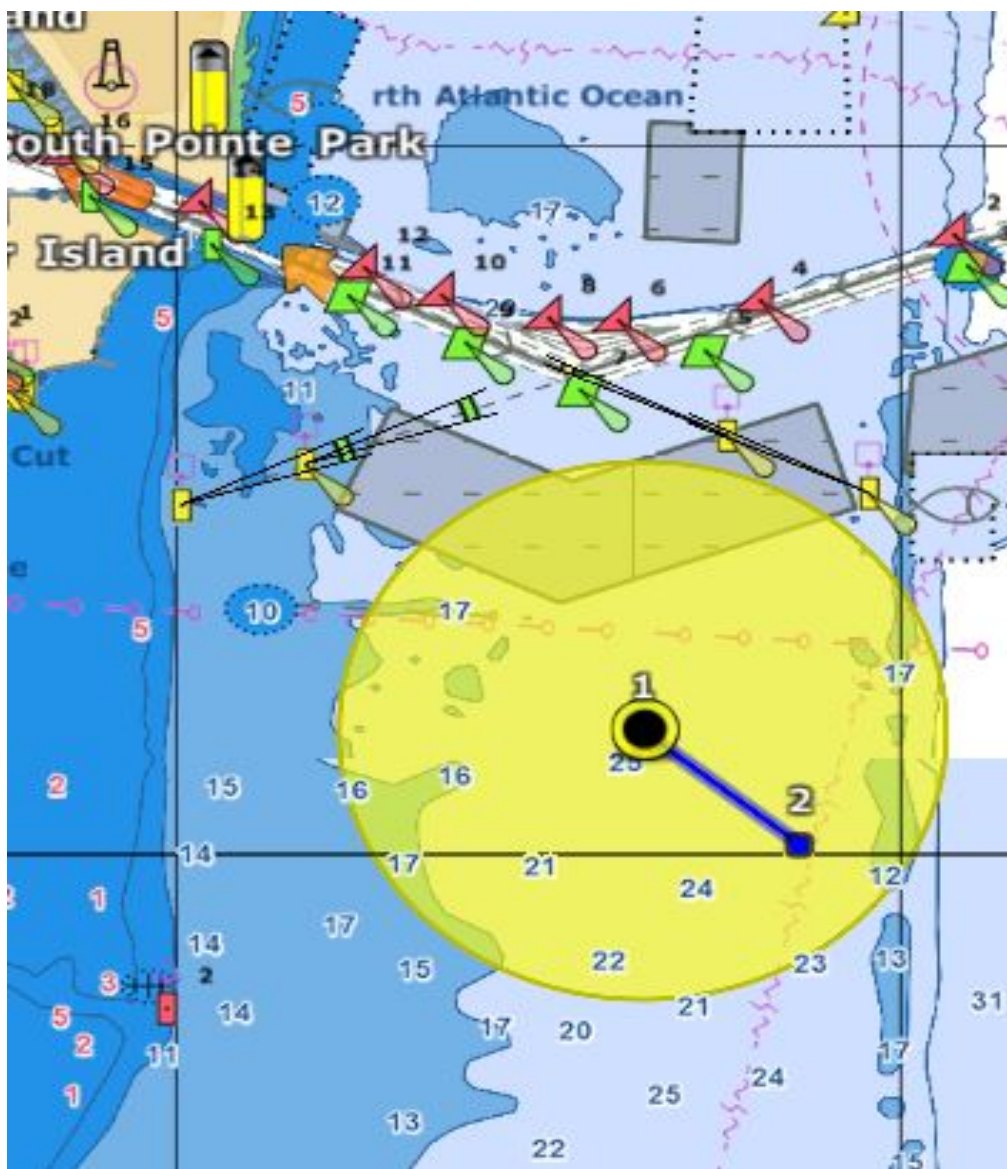
## **21.0 INSURANCE**

- 21.1 Each participating boat shall be insured with valid liability insurance of \$300,000.00 (US)

# North American Championship 2017

# NAERA 15

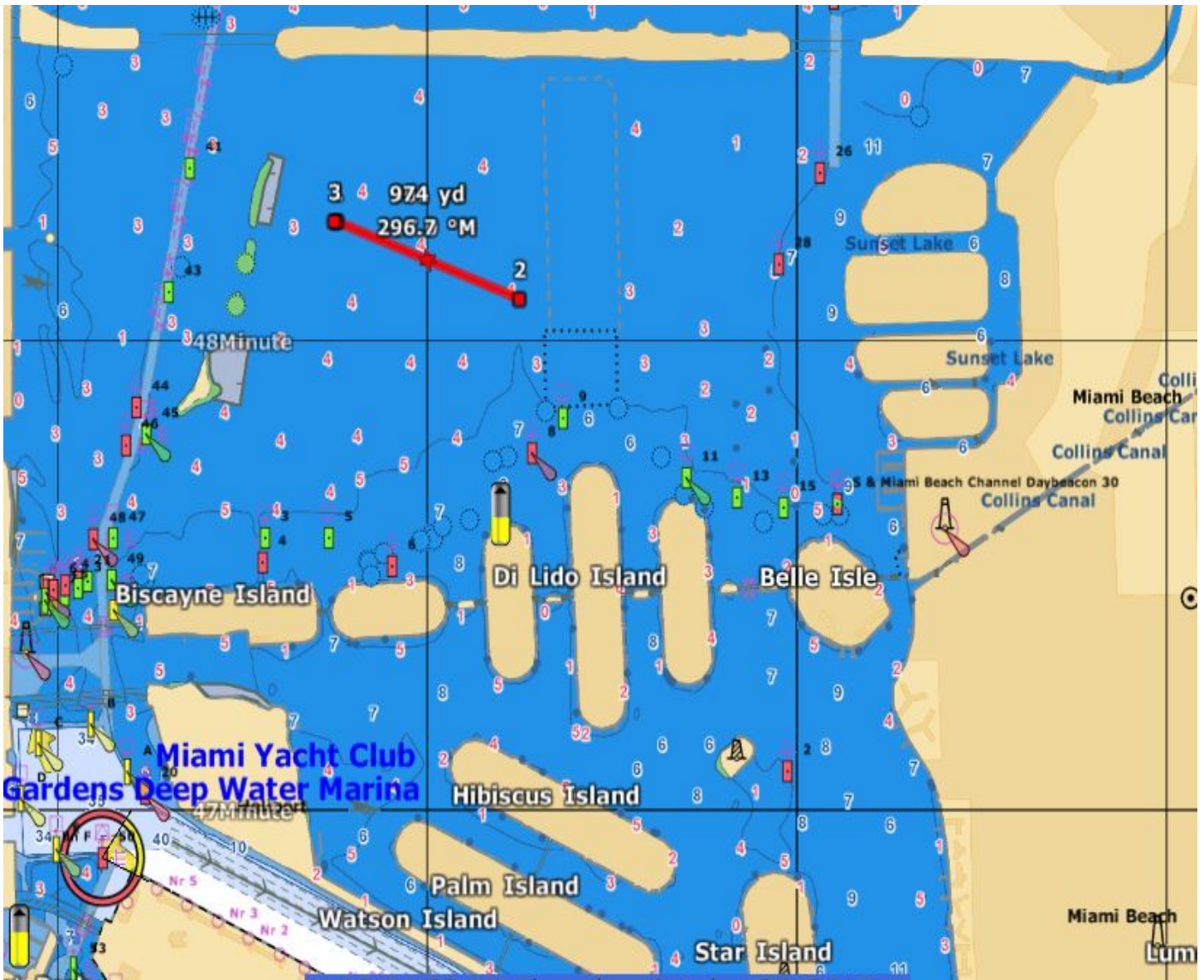
## Attachment A Primary Race Circle



# North American Championship 2017

# NACRA 15

## Attachment B Secondary Race Area "Miramar"

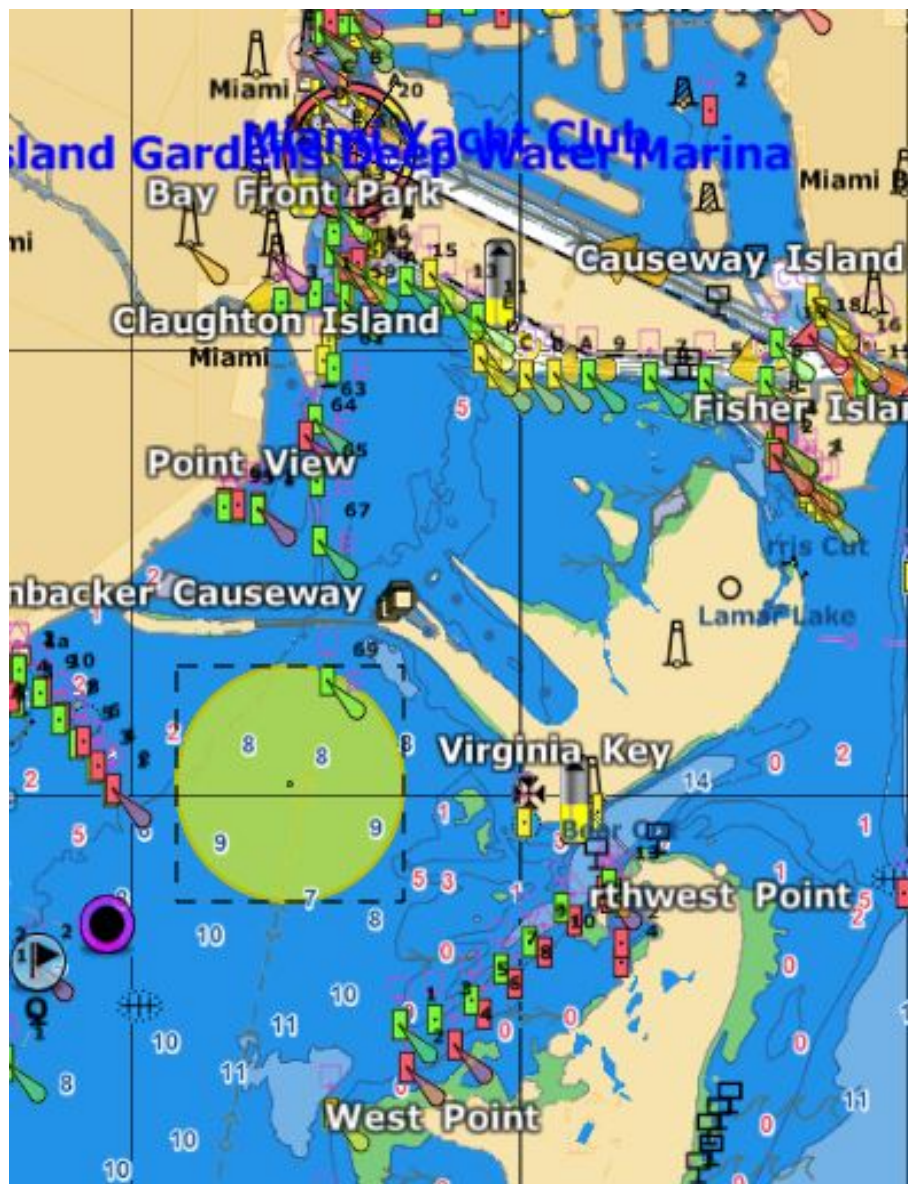


# North American Championship 2017

# NAACRA 15

Attachment C

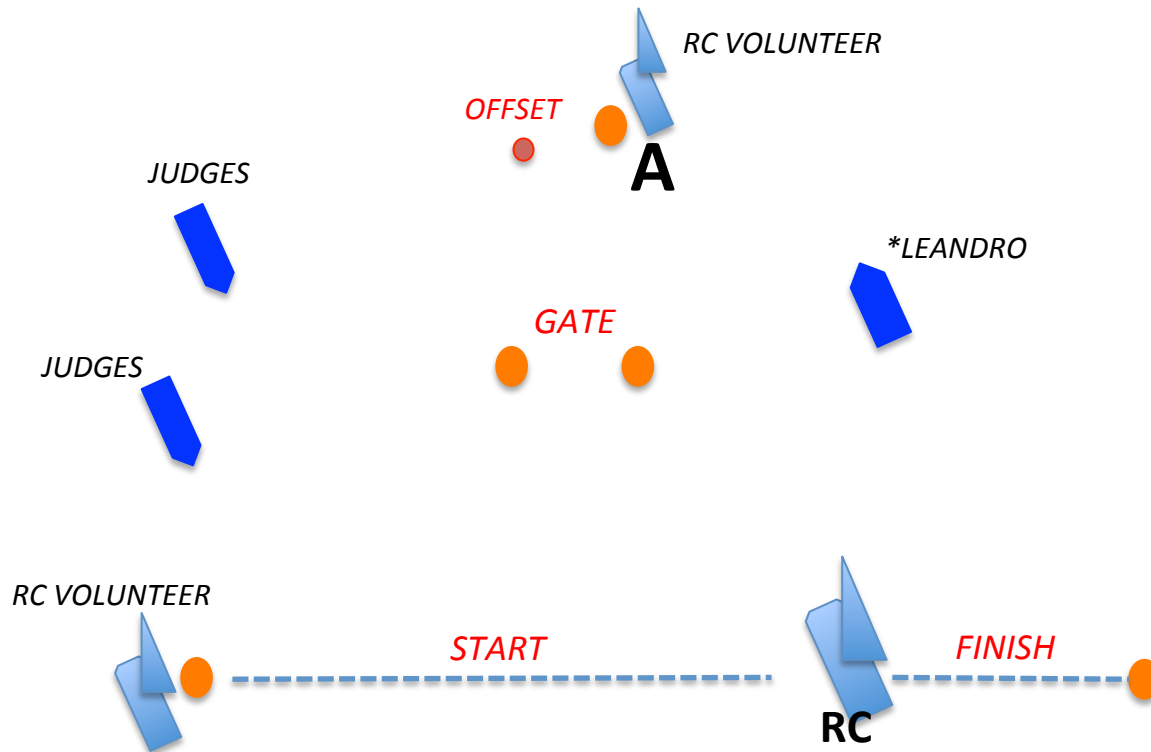
Biscayne Bay Course Circle





# RACE COURSE

## NORTH AMERICAN CHAMPIONSHIP - NACRA 15



SAILING INSTRUCTIONS : 4-4-2 / 2 DISCARDS  
30min per race