



South Beach Yacht Club

Sailing Instructions **2017-2018 Island Fever** **South Beach Yacht Club**

1. RULES

- 1.1. The regatta will be governed by the rules as defined in *The Racing Rules of Sailing*.
- 1.2. All competitors are required to wear a lifejacket or other adequate personal floatation device while racing. This changes RRS 40.

2. ELIGIBILITY AND ENTRY

- 2.1. Eligible boats shall complete registration online (www.southbeachyachtclub.org) in accordance with the Notice of Race.
- 2.2. The regatta is open to all boats with a valid Northern California PHRF certificate.
- 2.3. Boats without certificates will be assigned a PHRF rating at the sole and unappealable discretion of the Race Committee.

3. NOTICES AND COMMUNICATIONS

- 3.1. Official Notices will be posted on the Island Series electronic bulletin board that can be found at www.regattanetwork.com/event/15647
- 3.2. Changes to the Sailing Instructions will be posted by 1100 on the day they are to take effect.
- 3.3. Competitors should monitor VHF Channel 69 for on the water communications with the Race Committee.
- 3.4. Communication from the Race Committee shall not be considered outside help. This changes Rule 41.

4. SIGNALS MADE ASHORE

- 4.1. Signals made ashore will be displayed from the flagpole located on the deck of South Beach Yacht Club.
- 4.2. When AP is displayed ashore prior, "1 minute" is replaced with "not less than 30 minutes" in the Race Signal AP. This changes Race Signal AP.

5. SCHEDULE AND NUMBER OF RACES

- 5.1. Up to two races are scheduled each day.
- 5.2. The first warning is scheduled for 1230 hours.

6. STARTING ORDER

- 6.1. The initial intended starting order is as follows with subsequent starting orders at the discretion of the PRO:

Starting Order	Class	Class Flag
1230 Warning	Spinnaker 100 and below	D
	Spinnaker 101 to 150	E
	Spinnaker 151 and above	F
	Non-Spinnaker	G

7. RACING AREA

- 7.1. The race will be sailed in the South Bay Waters of San Francisco Bay located in the general area east of South Beach Harbor.

8. THE COURSE

- 8.1. The marks, courses and rounding are described in Attachment 1 - Courses.
- 8.2. No later than the Warning Signal, a code flag will be displayed from the Race Committee Boat designating the course to be sailed.
- 8.3. The RC shall hoist, no later than the Warning Signal, EITHER a “**GREEN**” flag indicating all marks to Starboard OR a “**RED**” flag indication all marks to Port.
- 8.4. Mark O is an offset mark set upcurrent of mark W. In the event that mark O is not in place, the single mark W shall be rounded as designated by the red or green flag flown on the signal boat at the start.

9. THE START

- 9.1. The starting line will be between a staff displaying an orange flag on the RC boat and a temporary buoy.

- 9.2. A boat that starts later than five (5) minutes after her starting signal shall be scored DNS. This changes RRS 63.1, A4.1 and A5.

10. Recalls

- 10.1. The Race Committee may hail the sail number(s) of the boat(s) identified On Course Side (OCS) of the starting line at the starting signal. **The failure of a hail, the failure of a boat hearing the hail or the order of the hails shall not be grounds for redress. This changes rule 62.1(a).**

11. THE FINISH

- 11.1. The finish line will be between a staff displaying an orange flag on the RC boat and temporary buoy
- 11.2. Boats retiring before finishing shall notify the Race Committee as soon as practical either by the assigned VHF channel or 813-695-2784.

12. TIME LIMITS

- 12.1. A boat failing to finish within **45** minutes after the first boat in her division sails the course and finishes, will be scored "DNF" by the race committee. This changes RRS 35, A4 and A5.
- 12.2. No race will be started after **1600** hours.

13. SCORING

- 13.1. Two races are required to be completed to constitute a series.
- 13.2. Races will be scored on corrected time using Time-On-Time (TOT).
- 13.3. When two to four races have been completed, a boat's series score will be the total of her race scores with no throw-outs allowed.
- 13.4. When five or more races have been completed, a boat's series score will be the total of her race scores excluding her worst score.

14. PROTESTS

- 14.1. Protests and requests for redress shall be written on standard US SAILING Protest Forms. Protest Forms are available at South Beach Yacht Club from the Race Committee and shall be delivered to a Race Committee Representative within **one hour** after the Race Committee Boat returns to the dock.
- 14.2. The protest will be heard the following Tuesday at 1900 in the library of the South Beach Yacht Club unless rescheduled by the Chief Judge. This shall serve as proper notification per RRS 63.2.

15. COMMERCIAL TRAFFIC AND/OR INTERFERENCE WITH OTHER VESSELS

- 15.1. Boats shall not impede the passage of commercial vessels and shall comply with USCG Navigation Rules. If a commercial vessel has sounded five blasts, and the commercial vessel or the Coast Guard identifies the boat, the Race Committee shall protest the boat, in which case the Protest Committee shall assume that the identified boat has impeded passage and violated USCG Navigation Rules, and the identified boat shall have the burden of proving otherwise. In the case of a complaint by vessel traffic or the Coast Guard, the protest time limit shall be extended up to seven (7) days after the conclusion of the Regatta. This changes RRS 60.2(a) and RRS 61.3.
- 15.2. The South Beach Yacht Club and the South Beach Yacht Club Race Committee shall cooperate with and provide information relevant to any investigations of impeding passage or violation of USCG Navigation Rules by the Coast Guard or other governmental authority.

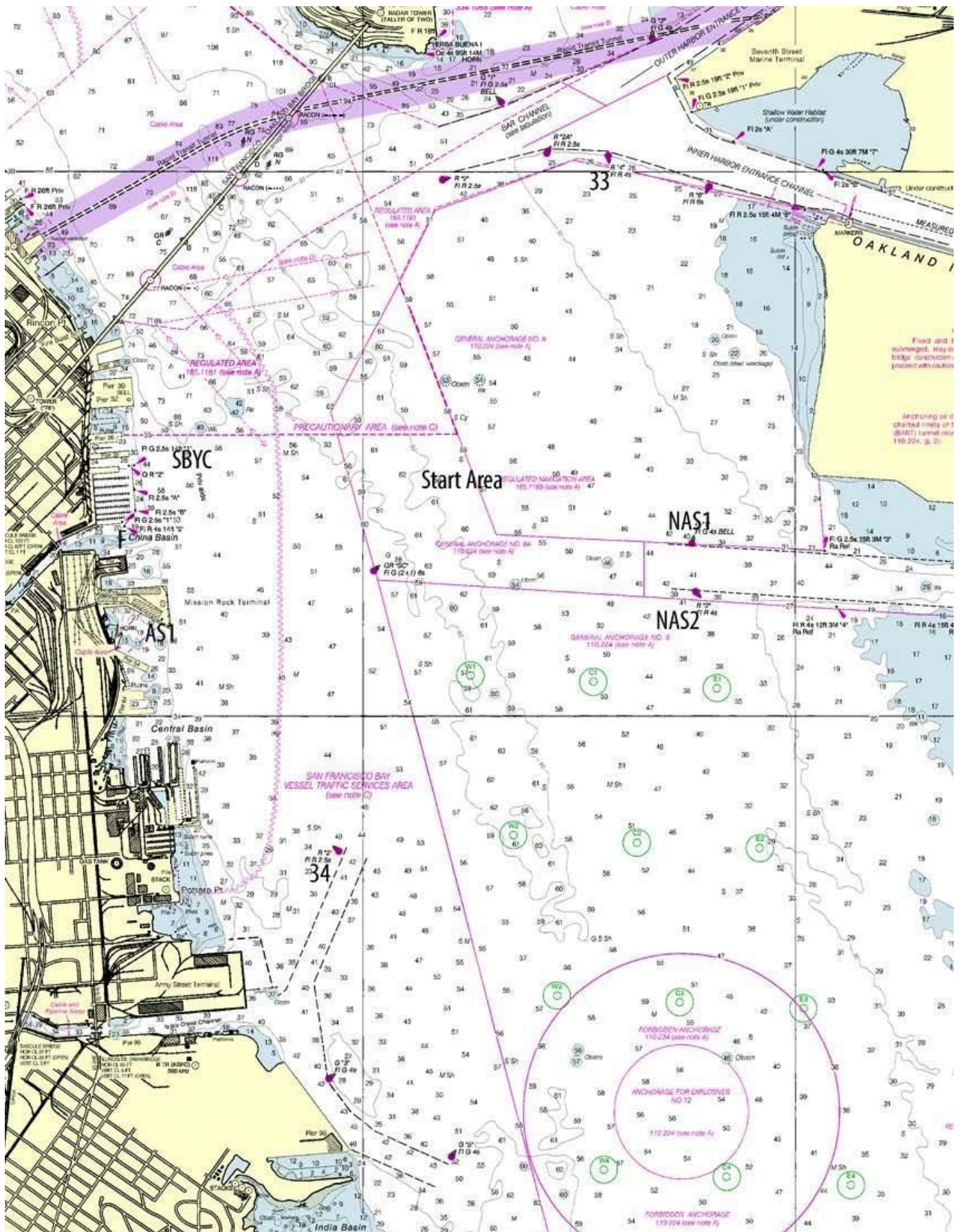
16. DISCLAIMER OF LIABILITY

- 16.1. Boats and competitors compete in the Regatta entirely at their own risk. See RRS 4 – Decision to Race. The organizing authority, the South Beach Yacht Club, and/or any of their collective agents or representatives will not accept any liability for material damage, personal injury or death sustained in conjunction with or prior to, during or after the Regatta.

Attachment 1 - Courses and Rounding Order

1	Start	W	O	L	Finish						
2	Start	W	O	L	W	O	L	Finish			
3	Start	W	O	L	W	O	L	W	O	L	Finish
4	Start	W	O	NAS1	Finish						
5	Start	W	O	NAS1	W	O	NAS1	Finish			
6	Start	W	SC1	L	Finish						
7	Start	W	SC1	L	W	Finish					

Mark	Mark Description	Mark	Mark Description
W	Temporary Mark approximately 0.9 NM upwind of the start.	O	A temporary Orange Tetrahedron reaching mark that may be set up current of W mark to square up the downwind leg.
L	Temporary Mark approximately 0.25 NM downwind of the start.	NAS1	NAS Alameda Channel Mark "1" FL G 4s Bell
SC1	Green & red buoy, "SC" FL G(2+1), approx 1.0 nm ENE of Mission Rock Terminal	Start / Finish	Start / Finish line between temporary mark and an orange flag on the Committee Boat. Note that for Courses 5 and 7 , it will be a downwind finish.



33

Start Area

NAS1

NAS2

34

FORBIDDEN ANCHORAGE
110.234 (see note A)

ANCHORAGE FOR EXPLOSIVES
NO 12
110.234 (see note A)

FORBIDDEN ANCHORAGE
119.224 (see note A)